

DISTRICT I  
1626 N. FRENCH DR., HOHHS, NM 88240

DISTRICT II  
1501 W. GRAND AVENUE, ARTESIA, NM 88210

DISTRICT III  
1000 Rio Brazos Rd., Aztec, NM 87410

DISTRICT IV  
1220 S. ST. FRANCIS DR., SANTA FE, NM 87505

State of New Mexico  
Energy, Minerals and Natural Resources Department

OIL CONSERVATION DIVISION  
1220 SOUTH ST. FRANCIS DR.  
Santa Fe, New Mexico 87505

Form C-102  
Revised October 12, 2005  
Submit to Appropriate District Office  
State Lease - 4 Copies  
Fee Lease - 3 Copies

WELL LOCATION AND ACREAGE DEDICATION PLAT

☐ AMENDED REPORT

API Number 30-05-29019	Pool Code 97722	Pool Name Abo; Wildcat
Property Code 36968	Property Name SARATOGA 30 STATE COM	Well Number 1
OGRID No. 162683	Operator Name CIMAREX ENERGY COMPANY OF COLORADO	Elevation 4450'

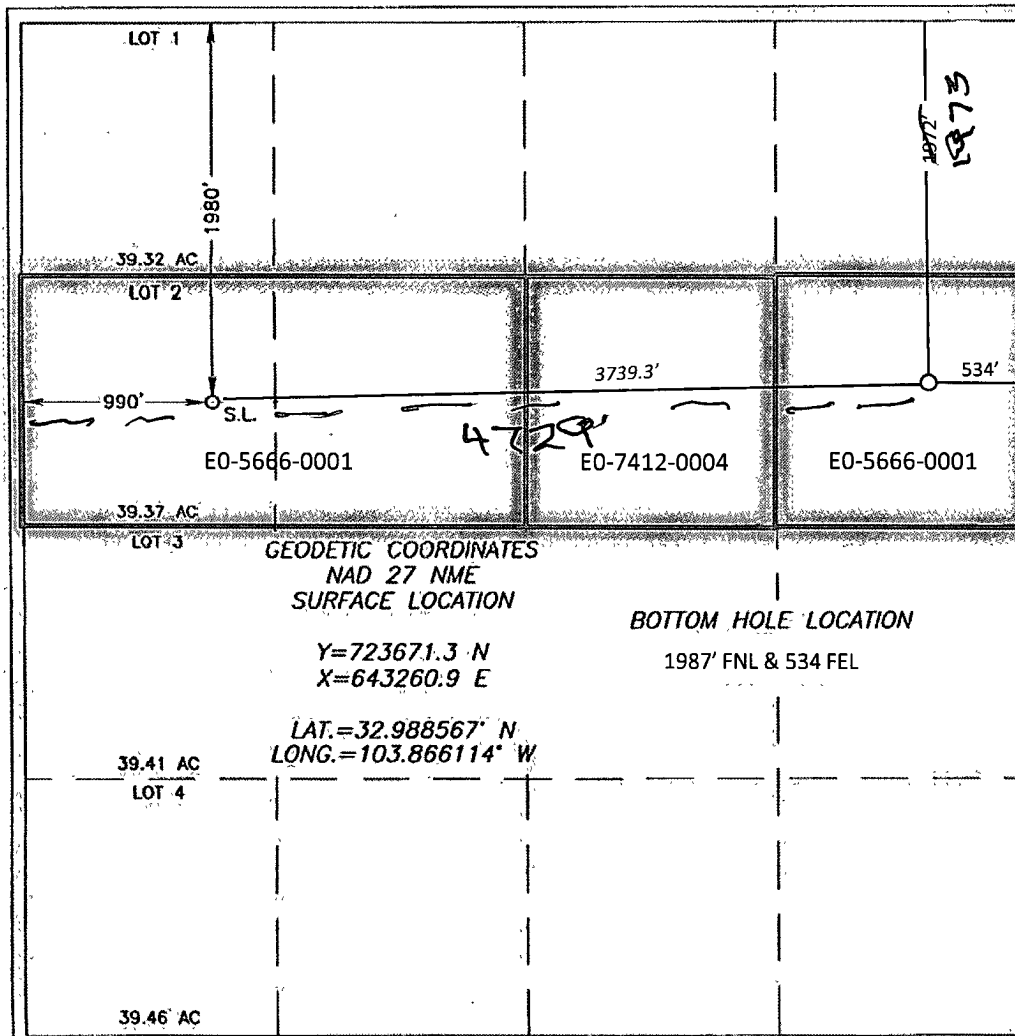
Surface Location

UL or lot No.	Section	Township	Range	Lot Idn	Feet from the	North/South line	Feet from the	East/West line	County
E	30	15-S	31-E		1980	NORTH	990	WEST	CHAVES

Bottom Hole Location If Different From Surface

UL or lot No.	Section	Township	Range	Lot Idn	Feet from the	North/South line	Feet from the	East/West line	County
H	30	15-S	31-E		1987 1987	NORTH	4729 534	W EAST	CHAVES
Dedicated Acres 159.37	Joint or Infill	Consolidation Code P	Order No.						

NO ALLOWABLE WILL BE ASSIGNED TO THIS COMPLETION UNTIL ALL INTERESTS HAVE BEEN CONSOLIDATED  
OR A NON-STANDARD UNIT HAS BEEN APPROVED BY THE DIVISION



OPERATOR CERTIFICATION

I hereby certify that the information herein is true and complete to the best of my knowledge and belief, and that this organization either owns a working interest or unleased mineral interest in the land including the proposed bottom hole location or has a right to drill this well at this location pursuant to a contract with an owner of such mineral or working interest, or to a voluntary pooling agreement or a compulsory pooling order heretofore entered by the division.

Signature Scott Haynes Date 01-28-09

Printed Name Scott Haynes

SURVEYOR CERTIFICATION

I hereby certify that the well location shown on this plat was plotted from field notes of actual surveys made by me or under my supervision, and that the same is true and correct to the best of my belief.

Date Surveyed JANUARY 15, 2008  
Signature & Seal of Professional Surveyor Ronald J. Eidson  
DSS

Certificate No. GARY G. EIDSON 12841  
RONALD J. EIDSON 3239