

RECEIVEDForm 3160-5
(April 2004)

UNITED STATES

FEB 03 2009

DEPARTMENT OF THE INTERIOR
BUREAU OF LAND MANAGEMENT**OCD-HOBBS**FORM APPROVED
OMB NO 1004-0137
Expires March 31, 2007**HOBBSSOODRY NOTICES AND REPORTS ON WELLS***Do not use this form for proposals to drill or to re-enter an abandoned well. Use Form 3160-3 (APD) for such proposals.***SUBMIT IN TRIPLICATE - Other instructions on reverse side**

1. Type of Well

☒ Oil Well ☐ Gas Well ☐ Other

2. Name of Operator

XT0 Energy Inc.

3a. Address

200 LORAIN, STE. 800 MIDLAND, TX 79701

3b. Phone No (include area code)

432-620-6740

4. Location of Well (Footage, Sec., T., R., M., or Survey Description)

660 Feet from the South line and 2310 Feet from the West line; Unit
Letter N, Section 14, T-20-S, R-36-E, NMPM, Lea County, New Mexico

5. Lease Serial No.

NM-1151

6. If Indian, Allottee or Tribe Name

7. If Unit or CA/Agreement, Name and/or No.
NM-70948B

8. Well Name and No

EUNICE MONUMENT 888

SOUTH UNIT B

9. API Well No

30-025-04273

10. Field and Pool, or Exploratory Area

EUNICE MONUMENT; GRAYBURG-
SAN ANDRES

11. County or Parish, State

LEA NM

12. CHECK APPROPRIATE BOX(ES) TO INDICATE NATURE OF NOTICE, REPORT, OR OTHER DATA

TYPE OF SUBMISSION

TYPE OF ACTION

☒ Notice of Intent☐ Subsequent Report☐ Final Abandonment Notice☐ Acidize☐ Alter Casing☐ Casing Repair☐ Change Plans☐ Convert to Injection☐ Deepen☐ Fracture Treat☐ New Construction☒ Plug and Abandon☐ Plug Back☐ Production (Start/Resume)☐ Reclamation☐ Recomplete☐ Temporarily Abandon☐ Water Disposal☐ Water Shut-Off☐ Well Integrity☐ Other

13. Describe Proposed or Completed Operation (clearly state all pertinent details, including estimated starting date of any proposed work and approximate duration thereof. If the proposal is to deepen directionally or recomple horizontally, give subsurface locations and measured and true vertical depths of all pertinent markers and zones. Attach the Bond under which the work will be performed or provide the Bond No. on file with BLM/BIA. Required subsequent reports shall be filed within 30 days following completion of the involved operations. If the operation results in a multiple completion or recomple in a new interval, a Form 3160-4 shall be filed once testing has been completed. Final Abandonment Notices shall be filed only after all requirements, including reclamation, have been completed, and the operator has determined that the final site is ready for final inspection.)

1. Notify BLM. MIRU PU. ND WH. NU BOP. RIH w/2-7/8" N-80 workstring & tag CIBP @ 3,653'.
2. Mix & circulate 9.0 ppg mud. Spot 55 sx cement. PUH to 2,900' and circulate clean. Tag TOC @ 3,075'.
3. PUH to 2600'. Spot 35 sx cement. PUH to 2050' and circulate clean. Tag TOC @ 2,205'.
4. PUH to 1475'. Spot 35 sx cement. PUH to 950' and circulate clean. Tag TOC @ 1075'.
5. PUH to 400'. Fill cement inside 5-1/2" casing from 400' to surface. This could take roughly 35 sks plus 5% excess so assume a total of 37 sks for the surface plug.
6. POOH and lay down all equipment. RDMO.
7. Cut off wellhead and anchors, install dryhole marker, clean and remediate location.

**SEE ATTACHED FOR
CONDITIONS OF APPROVAL****APPROVED**

JAN 25 2009

JAMES A. AMOS
SUPERVISOR-EPS

14. I hereby certify that the foregoing is true and correct

Name (Printed/Typed)

Kristy Ward

Title

Regulatory Analyst

Date 01/12/09

THIS SPACE FOR FEDERAL OR STATE OFFICE USE

Approved by

Title

DISTRICT 1 SUPERVISOR

Date

FEB 16 2009

Conditions of approval, if any, are attached. Approval of this notice does not warrant or certify that the applicant holds legal or equitable title to those rights in the subject lease which would entitle the applicant to conduct operations thereon.

Office

Title 18 U.S.C. Section 1001, and Title 43 U.S.C. Section 1212, makes it a crime for any person knowingly and willfully to make to any department or agency of the United States any false, fictitious or fraudulent statements or representations as to any matter within its jurisdiction.

WELL DATA SHEET

LEASE: EMSUB WELL: 888

LOC: 660' F S L & 2310' F W L SEC: 14

TOWNSHIP: 20S CNTY: Lea

RANGE: 36E UNIT: N ST. N.M.

FORM: Grayburg / San Andres DATE: _____

GL: 3568 STATUS: Producer

KB: 3577 API NO: 30-025-04273

DF: _____ CHEVNO: FA5417

Date Completed: 2/19/1939

Initial Production: 1008 BOPD 648 MCF

Initial Formation: Grayburg

FROM: 3734'-3840'

Completion Data

OPEN HOLE COMPLETION

Subsequent Workover or Reconditioning:

5/60 RAN 4" LINER PERF 3900-4083 SQZ PERF 3858-68 SWAB DRY
LEFT WELL SI
6/61 PERF 3752-3807 FRAC 10K OIL/SAND
WELL WENT TO 100% WATER
1/1992 ADD PERFS 3820-4084 ACID 750 GALS
7/2002 SQZ ALL PERFS DRILLED OUT TO 4225', PERF 4120-4198
ACID 1500 GALS

WELL TESTED MAINLY WATER

2-17-03 Set CIBP @ 3653' and TA well

11-13-03 Ran MIT - 520# for 30 mins Good tst.

Perfs:

4120-24	OPEN
4127-31	OPEN
4158-63	OPEN
4151-55	OPEN
4171-78	OPEN
4192-98	OPEN
3752-54	SQZ
3780-90	SQZ
3802-07	SQZ
3820-34	SQZ
3850-59	SQZ
3886-94	SQZ
3923-26	SQZ
3931-38	SQZ
3962-66	SQZ
3971-85	SQZ
4005-24	SQZ
4029-33	SQZ
4063-76	SQZ

10.75" OD
CSG
Set @ 255 W/ 225 SX
Cmt circ.? yes
TOC @ surf. by calc

7-5/8" OD
CSG
Set @ 1277 W/ 425 SX
Cmt circ.? yes
TOC @ surf. by calc

2-3/8" 4.7# TUBING @ 4109'

5-1/2" OD
17# CSG
Set @ 3734 W/ 425 SX
Cmt circ.? yes
TOC @ 0 by calc

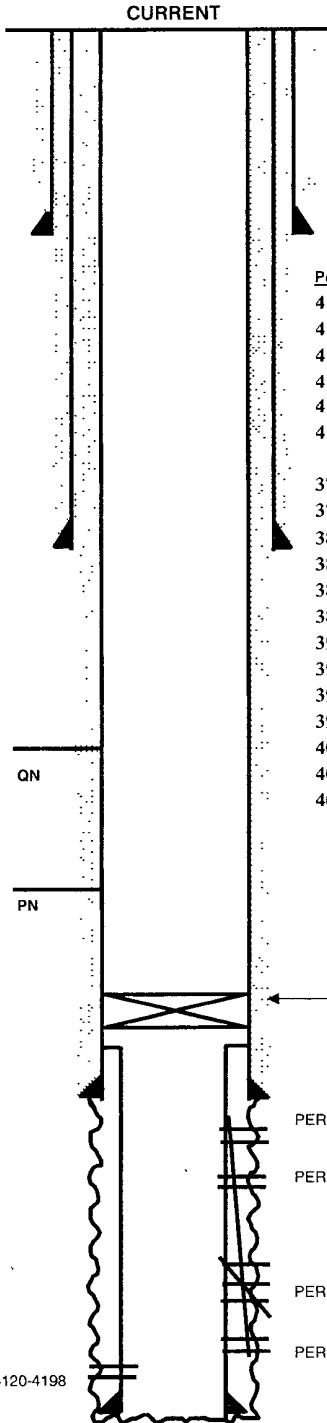
4" OD
LINER
Set @ 4273 W/ 35 SX
Cmt circ.? N/A
TOL @ 3681'

PERFS 4120-4198

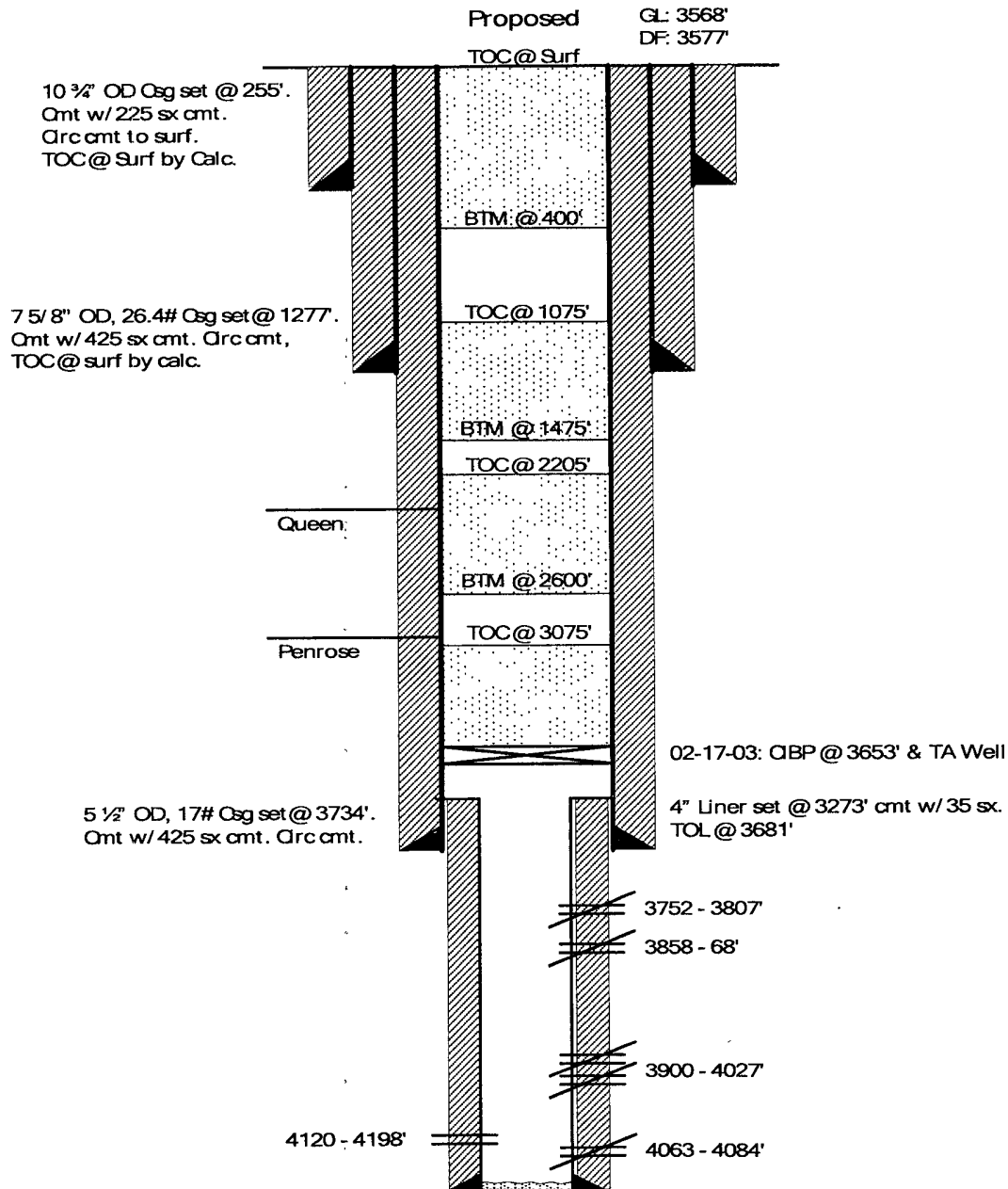
PBD:

TD: 4274'

FILE: EMSUB888WB.XLS



EMSU B #888 PA WELLBORE DIAGRAM



DATA

LOC: 660' FNL & 2310' FWL, SEC 14-N, T-20-S, R36E

COUNTY/STATE: LEA COUNTY, NM

FORMATION: GRAYBURG/ SAN ANDRES

FIELD: EUNICE MONUMENT

PROPOSED P&A

SPUD DATE:

39

IP: 1008 BOPD, 648 MCF

API #: 30-025-04273

STATUS:

COMPL DATE: 02-19-

COMPLETION DATA:

OPEN HOLE COMPLETION

WORKOVER HISTORY

05-60: RAN 4" LINER PERF 3900-4083 SQZ PERF 3858-68 SWAB DRY LEFT WELL SI

06-61: PERF 3752-3807 FRAC 10K OIL/SAND WELL WENT TO 100% WATER

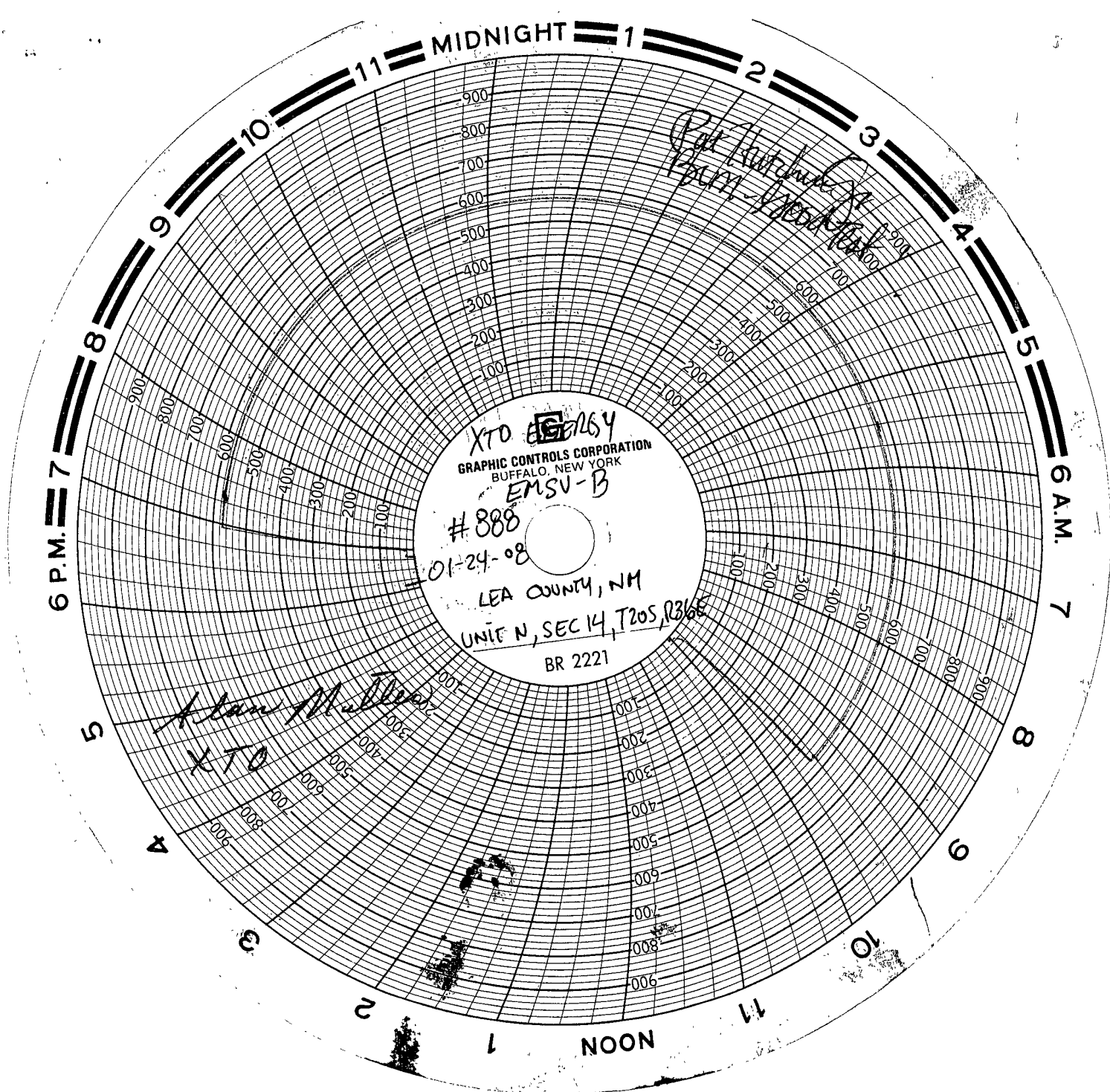
01-92: ADD PERFS 3820-4084 ACID 750 GALS

07-02: SQZ ALL PERFS DRILLED OUT TO 4225', PERF 4120-4198. ACID 1500 GALS

WELL TESTED MAINLY WATER

02-17-03: SET CIBP @ 3653' AND TA WELL.

11-13-03: RAN MIT - 520# FOR 30 MINS. GOOD TST.



XTD ENERGY
EMSV-B #888
01-24-2008
UNIF N, SEC 14, T20S, R36E

KEY 407
DAVID MACIAS
TRK # 0113237
01-24-08
CHART RECORDED CALIBRATED
01-21-08

TUB ⊕ PSI
SURFACE ⊕ PSI
INT ⊕ PSI
CASING ⊕ PSI