

District I
1625 N French Dr., Hobbs, NM 88240
Phone (505) 393-6161 Fax (505) 393-0720

Form C-101
Permit 89284

RECEIVED

FEB 05 2009

HOBBSOCD

State of New Mexico
Energy, Minerals and Natural Resources
Oil Conservation Division
1220 S. St Francis Dr.
Santa Fe, NM 87505

APPLICATION FOR PERMIT TO DRILL, RE-ENTER, DEEPEN, PLUGBACK, OR ADD A ZONE

1 Operator Name and Address APACHE CORP 6120 S. YALE TULSA, OK 74136		2 OGRID Number 873 ✓
		3 API Number 30-025-39342
4 Property Code 16814	5 Property Name D C HARDY	6 Well No 010 ✓

7. Surface Location

UL - Lot	Section	Township	Range	Lot Idn	Feet From	N/S Line	Feet From	E/W Line	County
P	20	21S	37E	P	435	S	385	E	LEA

8. Pool Information

BLINEBRY OIL AND GAS (OIL)	6660
TUBB OIL AND GAS (OIL)	60240
DRINKARD	19190

Additional Well Information

9 Work Type New Well	10 Well Type OIL	11 Cable/Rotary	12 Lease Type Private ✓	13 Ground Level Elevation 3485
14 Multiple Y	15 Proposed Depth 6850	16 Formation Drinkard	17 Contractor	18. Spud Date 5/1/2009
Depth to Ground water		Distance from nearest fresh water well		Distance to nearest surface water
Pit Liner Synthetic <input type="checkbox"/> mls thick Clay <input type="checkbox"/> Pit Volume bbls Drilling Method Closed Loop System <input type="checkbox"/> Fresh Water <input checked="" type="checkbox"/> Brine <input type="checkbox"/> Diesel/Oil-based <input type="checkbox"/> Gas/Air <input type="checkbox"/>				

19. Proposed Casing and Cement Program

Type	Hole Size	Casing Type	Casing Weight/ft	Setting Depth	Sacks of Cement	Estimated TOC
Surf	12.25	8.625	24	1300	575	
Prod	7.825	5.5	17	6850	1100	

Casing/Cement Program: Additional Comments

Permit Expires 2 Years From Approval Date Unless Drilling Underway

Proposed Blowout Prevention Program

Type	Working Pressure	Test Pressure	Manufacturer
DoubleRam	3000	2000	

I hereby certify that the information given above is true and complete to the best of my knowledge and belief I further certify that the drilling pit will be constructed according to NMOC guidelines, a general permit, or an (attached) alternative OCD-approved plan.	OIL CONSERVATION DIVISION	
	Approved By: <i>[Signature]</i>	
	Title: PETROLEUM ENGINEER	
	Printed Name: <i>Sam Hampton</i>	Approved Date: <i>FEB 16 2009</i>
	Title: <i>Drilling Engineer</i>	Expiration Date:
Email Address: <i>Sam.hampton@apachecorp.com</i>		
Date: <i>2/2/09</i>	Phone: <i>918-491-4954</i>	

District I

1625 N French Dr , Hobbs, NM 88240

District II

1301 W Grand Ave , Artesia, NM 88210

District III

1000 Rio Brazos Rd , Aztec, NM 87410

District IV

1220 S St Francis Dr , Santa Fe, NM 87505

State of New Mexico

RECEIVED Minerals and Natural Resources

Oil Conservation Division

1220 S. St Francis Dr.

Santa Fe, NM 87505

Form C-102
Permit 89284**WELL LOCATION AND ACREAGE DEDICATION PLAT**

1 API Number 30-025-39342	2 Pool Code 6660	3 Pool Name BLINEBRY OIL AND GAS (OIL)
4 Property Code 16814	5 Property Name D C HARDY	6 Well No 010
7 OGRID No 873	8 Operator Name APACHE CORP	9 Elevation 3485

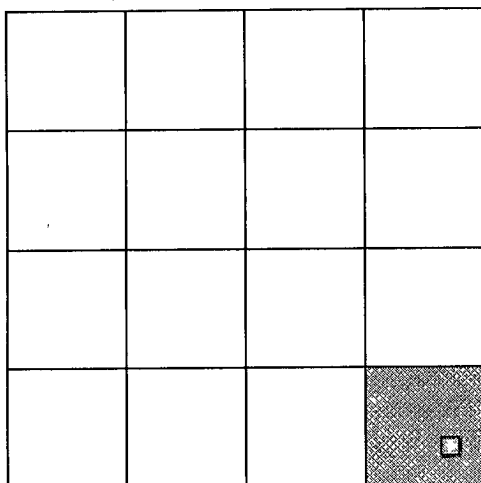
10. Surface Location

UL - Lot P	Section 20	Township 21S	Range 37E	Lot Idn	Feet From 435	N/S Line S	Feet From 385	E/W Line E	County LEA
---------------	---------------	-----------------	--------------	---------	------------------	---------------	------------------	---------------	---------------

11. Bottom Hole Location If Different From Surface

UL - Lot	Section	Township	Range	Lot Idn	Feet From	N/S Line	Feet From	E/W Line	County
12 Dedicated Acres 40.00		13 Joint or Infill		14 Consolidation Code		15 Order No			

NO ALLOWABLE WILL BE ASSIGNED TO THIS COMPLETION UNTIL ALL INTERESTS HAVE BEEN CONSOLIDATED OR A NON-STANDARD UNIT HAS BEEN APPROVED BY THE DIVISION

**OPERATOR CERTIFICATION**

I hereby certify that the information contained herein is true and complete to the best of my knowledge and belief, and that this organization either owns a working interest or unleased mineral interest in the land including the proposed bottom hole location(s) or has a right to drill this well at this location pursuant to a contract with an owner of such a mineral or working interest, or to a voluntary pooling agreement or a compulsory pooling order heretofore entered by the division

E-Signed By:

Title:

Date:

SURVEYOR CERTIFICATION

I hereby certify that the well location shown on this plat was plotted from field notes of actual surveys made by me or under my supervision, and that the same is true and correct to the best of my belief

Surveyed By: RONALD J. EIDSON

Date of Survey: 8/14/2007

Certificate Number: 3239

RECEIVEDDistrict I

1625 N French Dr, Hobbs, NM 88240

District II

1301 W Grand Ave, Artesia, NM 88210

District III

1000 Rio Brazos Rd, Aztec, NM 87410

District IV

1220 S St Francis Dr, Santa Fe, NM 87505

FEB 05 2009

HOBBS

State of New Mexico

Energy, Minerals and Natural Resources

Oil Conservation Division

1220 S. St Francis Dr.

Santa Fe, NM 87505

Form C-102
Permit 89284**WELL LOCATION AND ACREAGE DEDICATION PLAT**

1 API Number 30-025-39342	2 Pool Code 60240	3 Pool Name TUBB OIL AND GAS (OIL)
4 Property Code 16814	5 Property Name D C HARDY	6 Well No 010
7 OGRID No 873	8 Operator Name APACHE CORP	9 Elevation 3485

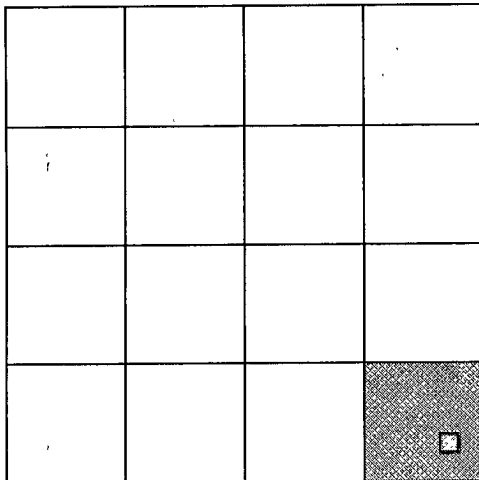
10. Surface Location

UL - Lot P	Section 20	Township 21S	Range 37E	Lot Idn	Feet From 435	N/S Line S	Feet From 385	E/W Line E	County LEA
---------------	---------------	-----------------	--------------	---------	------------------	---------------	------------------	---------------	---------------

11. Bottom Hole Location If Different From Surface

UL - Lot	Section	Township	Range	Lot Idn	Feet From	N/S Line	Feet From	E/W Line	County
12 Dedicated Acres 40.00		13 Joint or Infill		14 Consolidation Code		15 Order No			

NO ALLOWABLE WILL BE ASSIGNED TO THIS COMPLETION UNTIL ALL INTERESTS HAVE BEEN CONSOLIDATED OR A NON-STANDARD UNIT HAS BEEN APPROVED BY THE DIVISION

**OPERATOR CERTIFICATION**

I hereby certify that the information contained herein is true and complete to the best of my knowledge and belief, and that this organization either owns a working interest or unleased mineral interest in the land including the proposed bottom hole location(s) or has a right to drill this well at this location pursuant to a contract with an owner of such a mineral or working interest, or to a voluntary pooling agreement or a compulsory pooling order heretofore entered by the division

E-Signed By:

Title:

Date:

SURVEYOR CERTIFICATION

I hereby certify that the well location shown on this plat was plotted from field notes of actual surveys made by me or under my supervision, and that the same is true and correct to the best of my belief

Surveyed By: RONALD J. EIDSON

Date of Survey: 8/14/2007

Certificate Number: 3239

District I

1625 N French Dr, Hobbs, NM 88240

District II

1301 W Grand Ave, Artesia, NM 88210

District III

1000 Rio Brazos Rd, Aztec, NM 87410

District IV

1220 S St Francis Dr, Santa Fe, NM 87505

RECEIVED

FEB 05 2008

HOBBSOCD**State of New Mexico****Energy, Minerals and Natural Resources****Oil Conservation Division****1220 S. St Francis Dr.****Santa Fe, NM 87505**Form C-102
Permit 89284**WELL LOCATION AND ACREAGE DEDICATION PLAT**

1 API Number 30-025-39342	2 Pool Code 19190	3 Pool Name DRINKARD
4 Property Code 16814	5 Property Name D.C. HARDY	6 Well No 010
7 OGRID No 873	8 Operator Name APACHE CORP	9 Elevation 3485

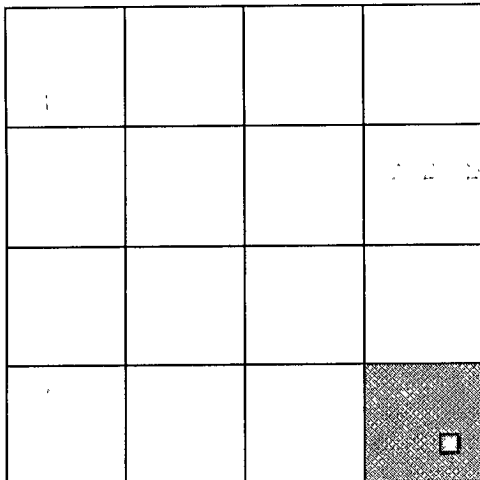
10. Surface Location

UL - Lot P	Section 20	Township 21S	Range 37E	Lot Idn	Feet From 435	N/S Line S	Feet From 385	E/W Line E	County LEA
---------------	---------------	-----------------	--------------	---------	------------------	---------------	------------------	---------------	---------------

11. Bottom Hole Location If Different From Surface

UL - Lot	Section	Township	Range	Lot Idn	Feet From	N/S Line	Feet From	E/W Line	County
12 Dedicated Acres 40.00		13 Joint or Infill		14 Consolidation Code		15 Order No			

NO ALLOWABLE WILL BE ASSIGNED TO THIS COMPLETION UNTIL ALL INTERESTS HAVE BEEN CONSOLIDATED OR A NON-STANDARD UNIT HAS BEEN APPROVED BY THE DIVISION

**OPERATOR CERTIFICATION**

I hereby certify that the information contained herein is true and complete to the best of my knowledge and belief, and that this organization either owns a working interest or unleased mineral interest in the land including the proposed bottom hole location(s) or has a right to drill this well at this location pursuant to a contract with an owner of such a mineral or working interest, or to a voluntary pooling agreement or a compulsory pooling order heretofore entered by the division.

E-Signed By:

Title:

Date:

SURVEYOR CERTIFICATION

I hereby certify that the well location shown on this plat was plotted from field notes of actual surveys made by me or under my supervision, and that the same is true and correct to the best of my belief

Surveyed By: RONALD J. EIDSON

Date of Survey: 8/14/2007

Certificate Number: 3239

DISTRICT I
1625 N. FRENCH DR., HOBBS, NM 88240

DISTRICT II
1301 W. GRAND AVENUE, ARTESIA, NM 88210

DISTRICT III
1000 Rio Brazos Rd., Aztec, NM 87410

DISTRICT IV
1220 S. ST. FRANCIS DR., SANTA FE, NM 87505

State of New Mexico
Energy, Minerals and Natural Resources Department

RECEIVED

FEB 05 2010

HOBBSOCD

OIL CONSERVATION DIVISION

1220 SOUTH ST. FRANCIS DR.
Santa Fe, New Mexico 87505

Form C-102
Revised October 12, 2005
Submit to Appropriate District Office
State Lease - 4 Copies
Fee Lease - 3 Copies

WELL LOCATION AND ACREAGE DEDICATION PLAT

☐ AMENDED REPORT

API Number	Pool Code	Pool Name
Property Code	Property Name DC HARDY	Well Number 10
OGRID No.	Operator Name APACHE CORPORATION	Elevation 3485'

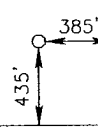
Surface Location

UL or lot No. P	Section 20	Township 21-S	Range 37-E	Lot Idn	Feet from the 435	North/South line SOUTH	Feet from the 385	East/West line EAST	County LEA
--------------------	---------------	------------------	---------------	---------	----------------------	---------------------------	----------------------	------------------------	---------------

Bottom Hole Location If Different From Surface

UL or lot No.	Section	Township	Range	Lot Idn	Feet from the	North/South line	Feet from the	East/West line	County
Dedicated Acres	Joint or Infill	Consolidation Code	Order No.						

NO ALLOWABLE WILL BE ASSIGNED TO THIS COMPLETION UNTIL ALL INTERESTS HAVE BEEN CONSOLIDATED
OR A NON-STANDARD UNIT HAS BEEN APPROVED BY THE DIVISION

GEODETIC COORDINATES NAD 27 NME Y=532344.2 N X=856573.6 E LAT.=32.458219° N LONG.=103.177324° W LAT. =32°27'29.59" N LONG. =103°10'38.37" W			
			

OPERATOR CERTIFICATION

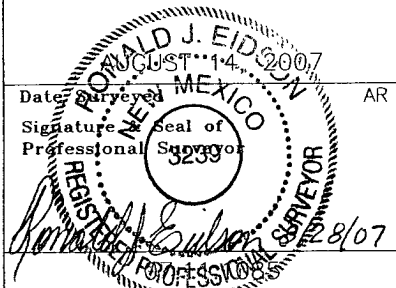
I hereby certify that the information herein is true and complete to the best of my knowledge and belief, and that this organization either owns a working interest or unleased mineral interest in the land including the proposed bottom hole location or has a right to drill this well at this location pursuant to a contract with an owner of such mineral or working interest, or to a voluntary pooling agreement or a compulsory pooling order heretofore entered by the division.

 2/2/09
Signature Date

SAM HAMPTON
Printed Name

SURVEYOR CERTIFICATION

I hereby certify that the well location shown on this plat was plotted from field notes of actual surveys made by me or under my supervision, and that the same is true and correct to the best of my belief.


Date Surveyed
Signature
Professional Surveyor
AR
2/28/07

Certificate No. GARY EIDSON 12641
RONALD J. EIDSON 3239

Permit Comments

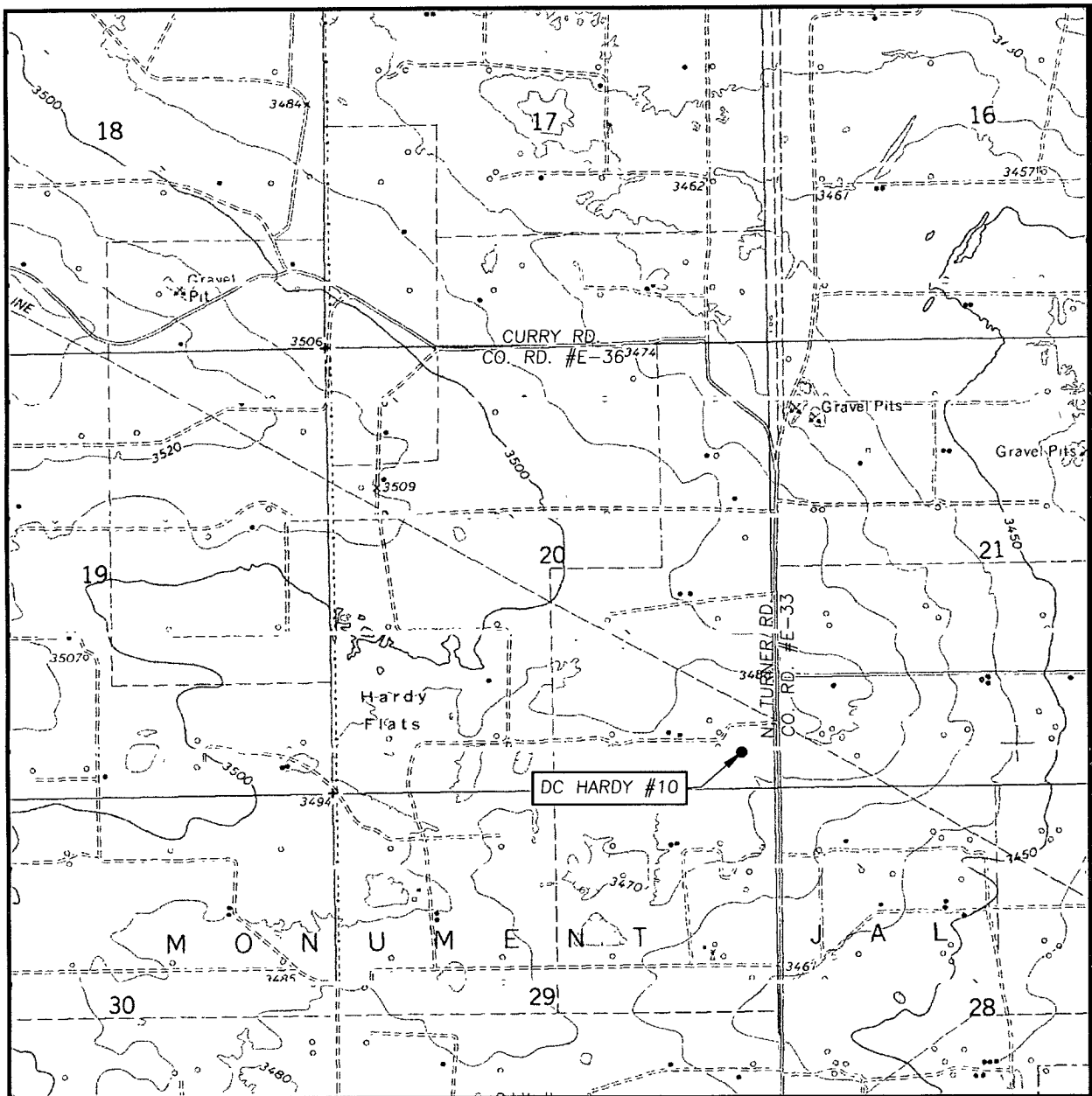
Operator: APACHE CORP , 873

Well: D C HARDY #010

API:

Created By	Comment	Comment Date
LWILLIAMS	WE RECEIVED A CANCELLATION OF INTENT TO DRILL 11/26/08 THIS IS THAT SAME WELL, WE JUST NEED A VALID PERMIT	2/2/2009

LOCATION VERIFICATION MAP



SCALE: 1" = 2000'

CONTOUR INTERVAL:
EUNICE, N.M. - 10'

SEC. 20 TWP. 21-S RGE. 37-E

SURVEY _____ N.M.P.M.

COUNTY LEA STATE NEW MEXICO

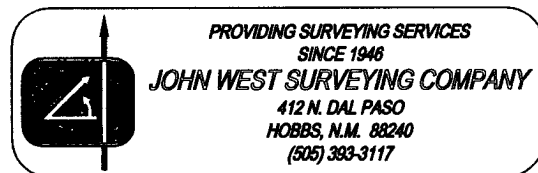
DESCRIPTION 435' FSL & 385' FEL

ELEVATION 3485'

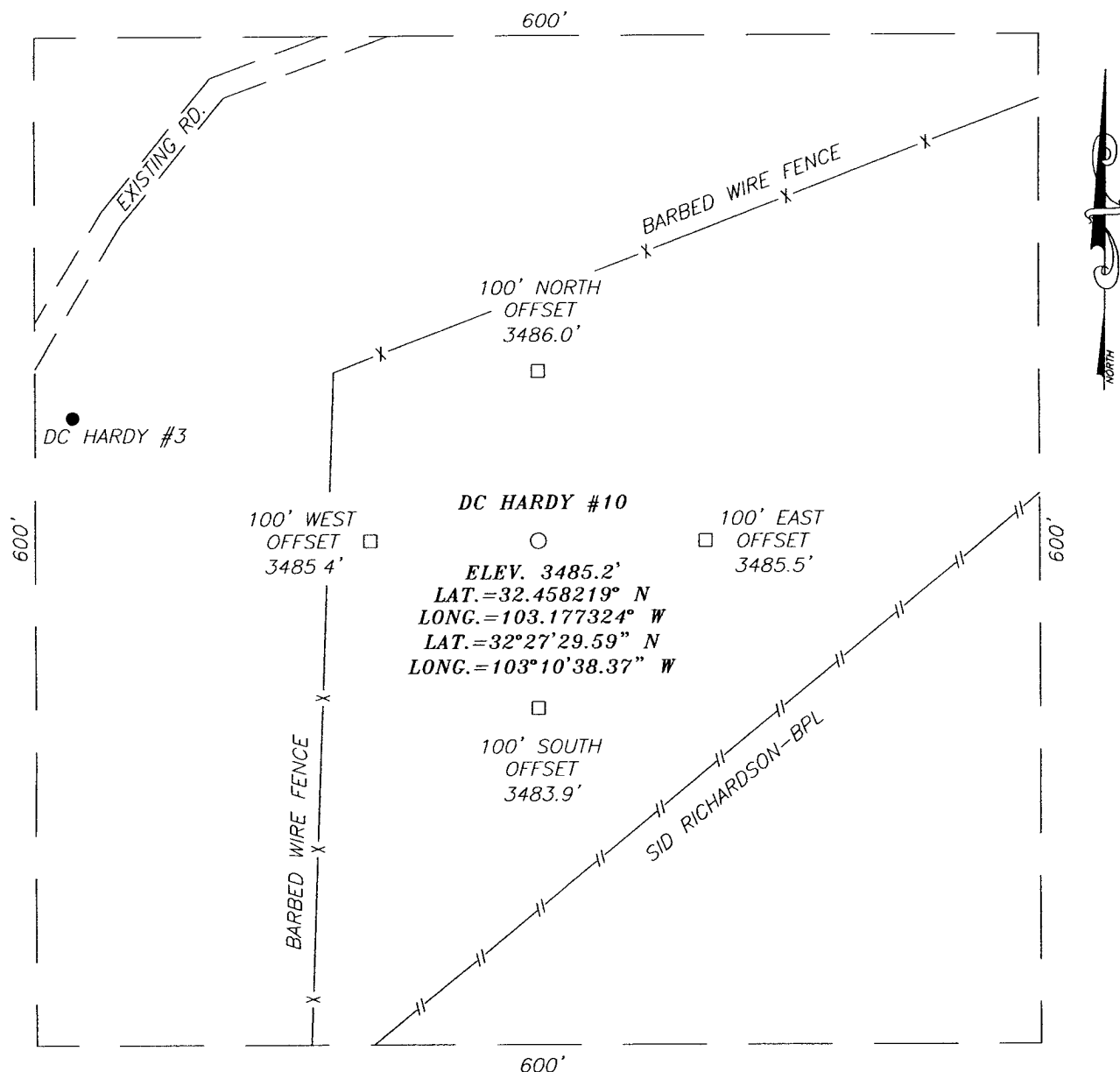
OPERATOR APACHE CORPORATION

LEASE DC HARDY

U.S.G.S. TOPOGRAPHIC MAP
EUNICE, N.M.

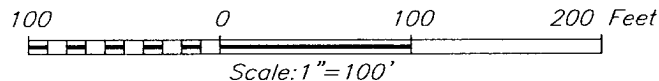


SECTION 20, TOWNSHIP 21 SOUTH, RANGE 37 EAST, N.M.P.M.,
 LEA COUNTY, NEW MEXICO



DIRECTIONS TO LOCATION


FROM THE INTERSECTION OF CO. RD. #E-33 (TURNER RD.) AND ST. HWY. #8, GO NORTH ON CO. RD. #E-33 APPROX. 1.15 MILES. TURN LEFT AND GO WEST APPROX. 0.1 MILE TO THE EXISTING DC HARDY #3 WELL. THIS LOCATION IS APPROX. 286 FEET SOUTHEAST.



APACHE CORPORATION

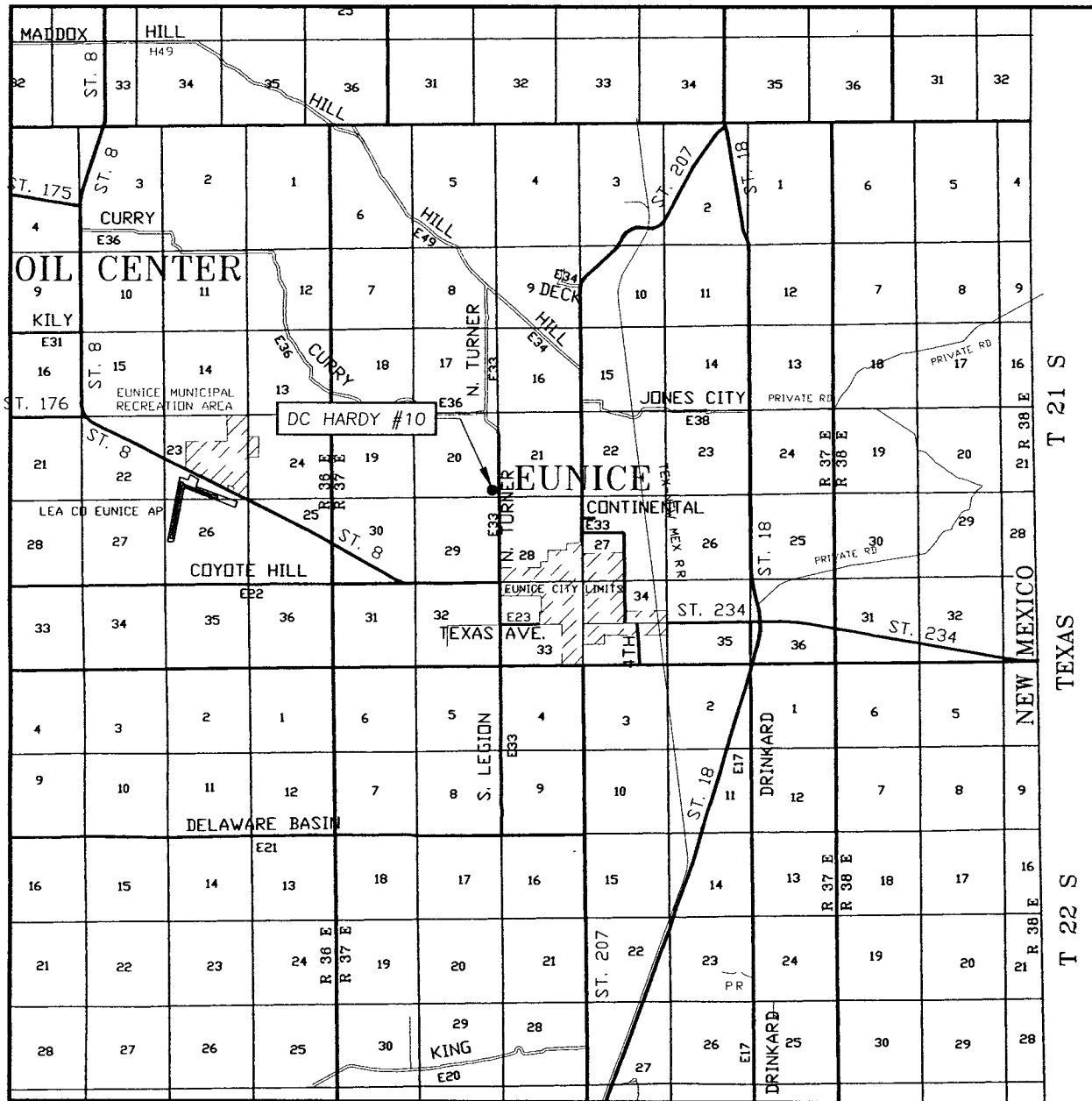
DC HARDY #10 WELL
 LOCATED 435 FEET FROM THE SOUTH LINE
 AND 385 FEET FROM THE EAST LINE OF SECTION 20,
 TOWNSHIP 21 SOUTH, RANGE 37 EAST, N.M.P.M.,
 LEA COUNTY, NEW MEXICO.

Survey Date: 8/14/07	Sheet 1 of 1 Sheets
W.O. Number: 07.11.1085	Dr By: AR
Date: 8/27/07	Disk: 07111085
	Scale: 1"=100'



PROVIDING SURVEYING SERVICES
 SINCE 1946
JOHN WEST SURVEYING COMPANY
 412 N. DAL PASO
 HOBBS, N.M. 88240
 (505) 393-3117

VICINITY MAP



SCALE: 1" = 2 MILES

SEC. 20 TWP. 21-S RGE. 37-E

SURVEY N.M.P.M.

COUNTY LEA STATE NEW MEXICO

DESCRIPTION 435' FSL & 385' FEL

ELEVATION 3485'

OPERATOR APACHE CORPORATION

LEASE DC HARDY

