

DISTRICT I  
P. O. Box 1980  
Hobbs, NM 88241-1980

State of New Mexico  
Energy, Minerals, and Natural Resources Department

Form C-102  
Revised 02-10-94  
Instructions on back

DISTRICT II  
P. O. Drawer DD  
Artesia, NM 88211-0719

OIL CONSERVATION DIVISION  
P. O. Box 2088  
Santa Fe, New Mexico 87504-2088

Submit to the Appropriate  
District Office  
State Lease - 4 copies  
Fee Lease - 3 copies

DISTRICT III  
1000 Rio Brazos Rd.  
Aztec, NM 87410

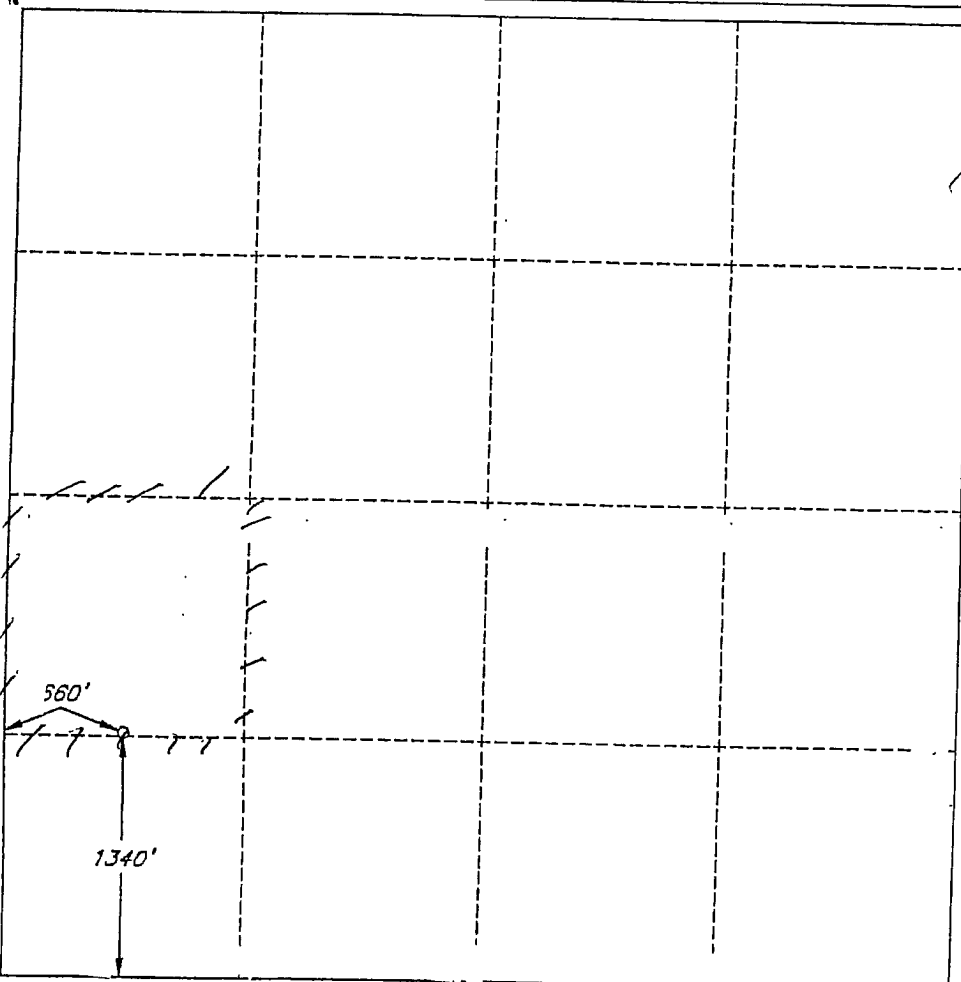
☐ AMENDED REPORT

DISTRICT IV  
P. O. Box 2088  
Santa Fe, NM 87507-2088

WELL LOCATION AND ACREAGE DEDICATION PLAT

1 API Number 30-025-35118		2 Pool Code 97724		3 Pool Name Wildcat <del>Delaware</del> Wolfcamp					
4 Property Code 24635		5 Property Name BELL LAKE UNIT				6 Well Number 21			
7 OGRID No. 6137		8 Operator Name Devon Energy Production Company, L.P.				9 Elevation 3431'			
10 SURFACE LOCATION									
UL or lot no. L	Section 32	Township 22 SOUTH	Range 34 EAST, N.M.P.M.	Lot Ida	Feet from the 1340'	North/South line SOUTH	Feet from the 660'	East/West line WEST	County LEA
"BOTTOM HOLE LOCATION IF DIFFERENT FROM SURFACE"									
UL or lot no.	Section	Township	Range	Lot Ida	Feet from the	North/South line	Feet from the	East/West line	County
12 Dedicated Acres 40		13 Joint or Infill		14 Consolidation Code		15 Order No.			

NO ALLOWABLE WELL BE ASSIGNED TO THIS COMPLETION UNTIL ALL INTERESTS HAVE BEEN CONSOLIDATED OR A NON-STANDARD UNIT HAS BEEN APPROVED BY THE DIVISION



OPERATOR CERTIFICATION

I hereby certify that the information contained herein is true and complete to the best of my knowledge and belief.

Signature: *[Signature]*  
Printed Name

Norvella Adams

Title

Sr. Staff Eng. Tech.

Date

August 1, 2008

SURVEYOR CERTIFICATION

I hereby certify that the well location shown on this plat was plotted from field notes of actual surveys made by me or under my supervision, and that the same is true and correct to the best of my belief.

Date of Survey

JULY 20, 2000

Signature and Seal of Professional Surveyor

*[Signature]*  
Certificate No.

V. L. BEZNER R.P.S. #7920

JOB #70567 / 46 SW / V.H.B.

**Mull, Donna, EMNRD**

---

**From:** Mull, Donna, EMNRD  
**To:** Adams, Norvella  
**Cc:**  
**Subject:** Bell Lake Unit #21, API #30-025-35118  
**Attachments:**

**Sent:** Mon 10/27/2008 1:21 PM

Norvella, I am reviewing recompletion paperwork on this well. Per Hobbs OCD geologist this well is now producing from the Wildcat Wolfcamp (97724). OCD requires form C-102 for the dedicated acreage for the Wolfcamp. Please send to the Hobbs OCD form C-102.

I will be holding paperwork until we receive the C-102.

Thanks Donna

3/16/09  
Never Received

FOR RECORD ONLY