

District I
1625 N. French Dr , Hobbs, NM 88240
District II
1301 W. Grand Avenue, Artesia, NM 88201
District III
1000 Rio Brazos Road, Aztec, NM 87410
District IV
1220 S. St. Francis Dr., Santa Fe, NM 87505

State of New Mexico
Energy Minerals and Natural Resources

Form C-101
June 16, 2008

RECEIVED

MAR 03 2009

HOBBSOCD

Oil Conservation Division
1220 South St. Francis Dr.
Santa Fe, NM 87505

Submit to appropriate District Office

☐ AMENDED REPORT

APPLICATION FOR PERMIT TO DRILL, RE-ENTER, DEEPEN,
PLUGBACK, OR ADD A ZONE

¹ Operator Name and Address ConocoPhillips Company P.O. Box 51810 Midland Texas 79710		² OGRID Number 217817
³ Property Code 31471	⁵ Property Name State F-1	³ API Number 30 -025 - 39360 ⁶ Well No. 27
⁹ Proposed Pool 1 Hardy: Blinbry		¹⁰ Proposed Pool 2 Hardy: Tubb/Drinkard

⁷ Surface Location

UL or lot no. 6	Section 1	Township 21S	Range 36E	Lot Idn	Feet from the 2165	North/South line North	Feet from the 2233	East/West line West	County Lea
--------------------	--------------	-----------------	--------------	---------	-----------------------	---------------------------	-----------------------	------------------------	---------------

⁸ Proposed Bottom Hole Location If Different From Surface

UL or lot no.	Section	Township	Range	Lot Idn	Feet from the	North/South line	Feet from the	East/West line	County
---------------	---------	----------	-------	---------	---------------	------------------	---------------	----------------	--------

Additional Well Information

¹¹ Work Type Code N	¹² Well Type Code O	¹³ Cable/Rotary R	¹⁴ Lease Type Code S	¹⁵ Ground Level Elevation 3499'
¹⁶ Multiple Yes	¹⁷ Proposed Depth 7210'	¹⁸ Formation Abo	¹⁹ Contractor H & P #306	²⁰ Spud Date 03/17/2009

²¹ Proposed Casing and Cement Program

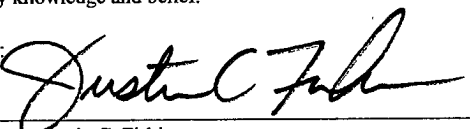

Hole Size	Casing Size	Casing weight/foot	Setting Depth	Sacks of Cement	Estimated TOC
12.25	8.625	24#	1378	600	Surface
7.875	5.5	17	7200	1000	Surface

²² Describe the proposed program. If this application is to DEEPEN or PLUG BACK, give the data on the present productive zone and proposed new productive zone. Describe the blowout prevention program, if any. Use additional sheets if necessary.

See Attached sheet for Drilling Mud and BOP program

Permit Expires 2 Years From Approval
Date Unless Drilling Underway

Conditions of Approval to drill & test all new zones separately but cannot produce Downhole commingle until DHC is approved in Hobbs District office according to R-11363

²³ I hereby certify that the information given above is true and complete to the best of my knowledge and belief.		OIL CONSERVATION DIVISION	
Signature: 		Approved by: 	
Printed name: Justin C. Firkins		Title: PETROLEUM ENGINEER	
Title: Regulatory Specialist		Approval Date: 07/19/09	Expiration Date: 03/19/11
E-mail Address: justin.c.firkins@conocophillips.com			
Date: 02/13/2009	Phone: 432-688-6913	Conditions of Approval Attached <input type="checkbox"/>	

State F-1 #27

15. Proposed Depth = 7210' MD RKB

19. Proposed Casing and Cement Program						
Type	Hole Size (inches)	Casing OD (inches)	Casing Wt (lb/ft)	Setting Depth (feet)	Sacks of Cement	Estimated TOC (feet)
Surface	12.25	8.625	24	1378	600	0
Prod	7.875	5.5	17	7200	1000	0

Casing and Cement Program: Additional Comments	
Fresh Water and Fresh Water Mud will be used for drilling the surface hole.	
Brine and Brine Based Mud will be used for drilling the production hole.	

Proposed Blowout Prevention Program			
Type	Working Pressure	Test Pressure	Manufacturer
Annular	2000	1000	
Blind Ram	2000	2000	
Pipe Ram	2000	2000	

DISTRICT I
1625 N. French Dr., Hobbs, NM 88240

DISTRICT II
1301 W. Grand Avenue, Artesia, NM 88210

DISTRICT III
1000 Rio Brazos Rd., Aztec, NM 87410

DISTRICT IV
1220 S. St. Francis Dr., Santa Fe, NM 87505

State of New Mexico
Energy, Minerals & Natural Resources Department

Form C-102
Revised October 12, 2005
Submit to Appropriate District Office
State Lease - 4 Copies
Fee Lease - 3 Copies

RECEIVED
OIL CONSERVATION DIVISION
1220 South St. Frances Dr.
Santa Fe, NM 87505
MAR 03 2009

HOBBSDO

☐ AMENDED REPORT

WELL LOCATION AND ACREAGE DEDICATION PLAT

API Number 30-025 - 39360	Pool Code 29710	Pool Name Hardy: Blinebry
Property Code 31471	Property Name STATE F-1	Well Number 27
OGRID No. 217817	Operator Name CONOCOPHILLIPS	Elevation 3499'

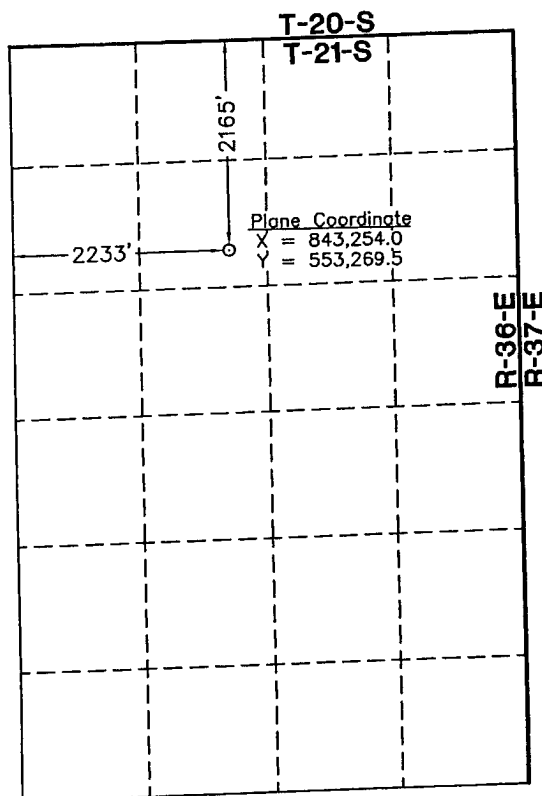
Surface Location

UL or lot No. 6	Section 1	Township 21 S	Range 36 E	Lot Idn	Feet from the 2165	North/South line NORTH	Feet from the 2233	East/West line WEST	County LEA
--------------------	--------------	------------------	---------------	---------	-----------------------	---------------------------	-----------------------	------------------------	---------------

Bottom Hole Location If Different From Surface

UL or lot No.	Section	Township	Range	Lot Idn	Feet from the	North/South line	Feet from the	East/West line	County
Dedicated Acres 40	Joint or Infill	Consolidation Code		Order No.					

NO ALLOWABLE WILL BE ASSIGNED TO THIS COMPLETION UNTIL ALL INTERESTS HAVE BEEN CONSOLIDATED OR A NON-STANDARD UNIT HAS BEEN APPROVED BY THE DIVISION



1" = 2000'

NOTE:

- 1) Plane Coordinates shown hereon are Transverse Mercator Grid and Conform to the "New Mexico Coordinate System", New Mexico East Zone, North American Datum of 1927. Distances shown hereon are mean horizontal surface values.

OPERATOR CERTIFICATION

I hereby certify the information contained herein is true and complete to the best of my knowledge and belief, and that this organization either owns a working interest or unleased mineral interest in the land including the proposed bottom hole location or has a right to drill this well at this location pursuant to a contract with an owner of such a mineral or working interest, or to a voluntary pooling agreement or a compulsory pooling order heretofore entered by the division.

Signature: *Justin C. Firkins* Date: 2/13/09
Printed Name: Justin C. Firkins

SURVEYOR CERTIFICATION

I hereby certify that the well location shown on this plat was plotted from field notes of actual surveys made by me or under my supervision and that the same is true and correct to the best of my belief.

February 6, 2009

Date of Survey
Signature & Seal of Professional Surveyor

W.O. Number: 2009-0036
Certificate No. 12185

DISTRICT I
1625 N. French Dr., Hobbs, NM 88240

State of New Mexico
Energy, Minerals & Natural Resources Department

Form C-102
Revised October 12, 2005
Submit to Appropriate District Office
State Lease - 4 Copies
Fee Lease - 3 Copies

DISTRICT II
1301 W. Grand Avenue, Artesia, NM 88210

DISTRICT III
1000 Rio Brazos Rd., Aztec, NM 87410

DISTRICT IV
1220 S. St. Francis Dr., Santa Fe, NM 87505

RECEIVED

MAR 03 2009

HOBBSDO

CONSERVATION DIVISION
1220 South St. Frances Dr.
Santa Fe, NM 87505

☐ AMENDED REPORT

WELL LOCATION AND ACREAGE DEDICATION PLAT

API Number 30-025 - 39360	Pool Code 29760	Pool Name Hardy: Tubb-Drinkard
Property Code 31471	Property Name STATE F-1	Well Number 27
OGRID No. 217817	Operator Name CONOCOPHILLIPS	Elevation 3499'

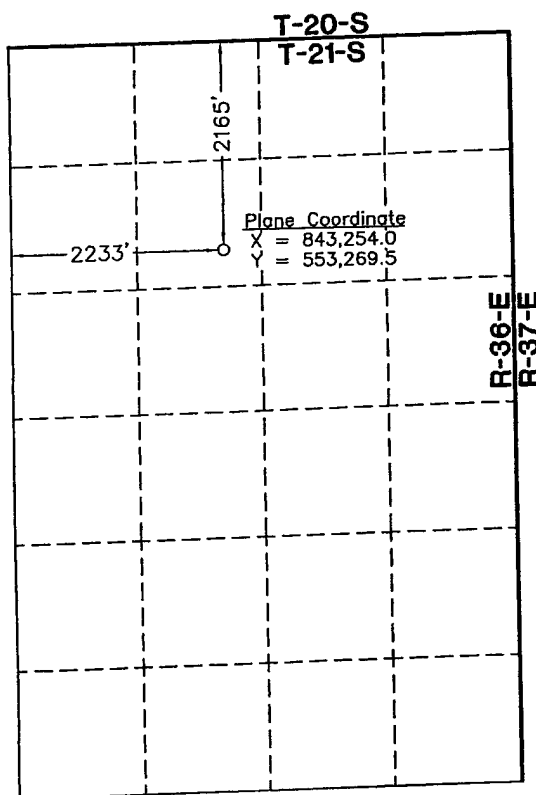
Surface Location

UL or lot No. 6	Section 1	Township 21 S	Range 36 E	Lot Idn	Feet from the 2165	North/South line NORTH	Feet from the 2233	East/West line WEST	County LEA
--------------------	--------------	------------------	---------------	---------	-----------------------	---------------------------	-----------------------	------------------------	---------------

Bottom Hole Location If Different From Surface

UL or lot No.	Section	Township	Range	Lot Idn	Feet from the	North/South line	Feet from the	East/West line	County
Dedicated Acres 40	Joint or Infill	Consolidation Code	Order No.						

NO ALLOWABLE WILL BE ASSIGNED TO THIS COMPLETION UNTIL ALL INTERESTS HAVE BEEN CONSOLIDATED OR A NON-STANDARD UNIT HAS BEEN APPROVED BY THE DIVISION



1" = 2000'

NOTE:

- 1) Plane Coordinates shown hereon are Transverse Mercator Grid and Conform to the "New Mexico Coordinate System", New Mexico East Zone, North American Datum of 1927. Distances shown hereon are mean horizontal surface values.

OPERATOR CERTIFICATION

I hereby certify the the information contained herein is true and complete to the best of my knowledge and belief, and that this organization either owns a working interest or undivided mineral interest in the land including the proposed bottom hole location or has a right to drill this well at this location pursuant to a contract with an owner of such a mineral or working interest, or to a voluntary pooling agreement or a compulsory pooling order heretofore entered by the division.

Signature: Justin C. Firkins
Date: 2/13/09

Printed Name: Justin C. Firkins

SURVEYOR CERTIFICATION

I hereby certify that the well location shown on this plat was plotted from field notes of actual surveys made by me or under my supervision and that the same is true and correct to the best of my belief.

February 6, 2009

Date of Survey
Signature & Seal of Professional Surveyor

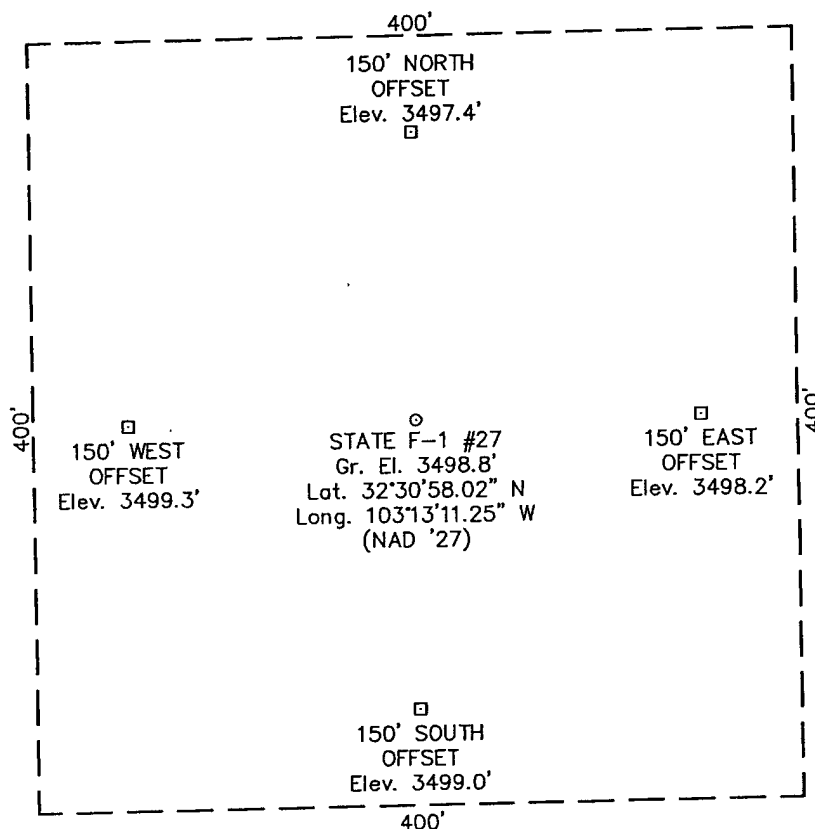
W.O. Number 2009-0036
Certificate No. 12185

SECTION 1, TOWNSHIP 21 SOUTH, RANGE 36 EAST, N.M.P.M.

LEA COUNTY

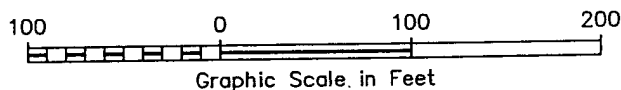
NEW MEXICO

L-2009-0036-A



DRIVING DIRECTIONS

FROM THE INTERSECTION OF AVENUE "O" AND TURNER IN EUNICE, NEW MEXICO, GO NORTH ON TURNER 2.0 MILES TO A DIRT ROAD ON WEST (LEFT) SIDE OF ROAD. THEN TRAVEL WEST AND NORTHWEST ON SAID DIRT ROAD, 3.8 MILES TO A CATTLE GUARD ON NORTH (RIGHT) SIDE OF ROAD. THEN GO NORTHEAST ON LEASE ROAD / PIPELINE RIGHT-OF-WAY 1.1 MILES TO A TWO-TRACK TRAIL ROAD ON WEST (LEFT) SIDE OF ROAD, THEN GO WEST ON SAID TWO-TRACK TRAIL ROAD, 0.3 MILE TO A POINT BEING APPROXIMATELY 300 FEET SOUTH OF THE PROPOSED LOCATION.



CONOCOPHILLIPS

STATE F-1 #27

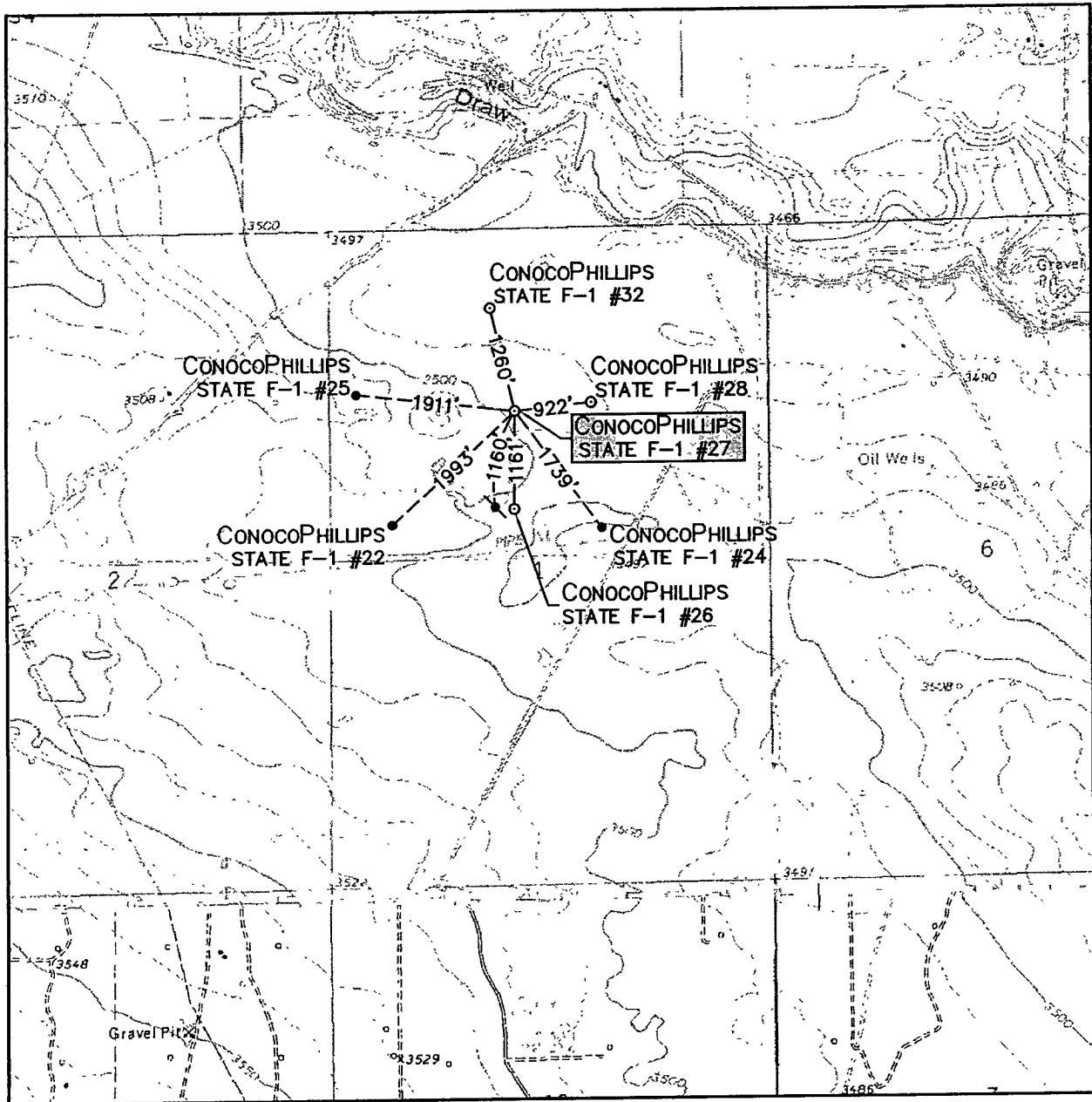
Located 2165' FNL & 2233' FWL, Section 1
Township 21 South, Range 36 East, N.M.P.M.
Lea County, New Mexico

Drawn By: LVA	Date: February 11, 2009
Scale: 1"=100'	Field Book: 422 / 67-71
Revision Date:	Quadrangle: Hobbs SW
W.O. No: 2009-0036	Dwg. No.: L-2009-0036-A



110 W. LOUISIANA, STE. 110
MIDLAND TEXAS, 79701
(432) 687-0865 - (432) 687-0868 FAX

LOCATION VERIFICATION MAP



SCALE: 1" = 2000'

CONTOUR INTERVAL:
HOBBS SW - 5'

SEC. 1 TWP. 21-S RGE. 36-E

SURVEY N.M.P.M.

COUNTY LEA

DESCRIPTION 2165' FNL & 2233' FWL

ELEVATION 3499'

OPERATOR CONOCOPhillips

LEASE STATE F-1

U.S.G.S. TOPOGRAPHIC MAP
HOBBS SW



110 W. LOUISIANA, STE. 110
MIDLAND TEXAS, 79701
(432) 687-0865 - (432) 687-0868 FAX