

District I
1625 N. French Dr., Hobbs, NM 88240
District II
1301 W. Grand Avenue, Artesia, NM 88210
District III
1000 Rio Brazos Road, Aztec, NM 87410
District IV
1220 S. St. Francis Dr., Santa Fe, NM 87505

State of New Mexico
Energy Minerals and Natural Resources

Form C-101
June 16, 2008

RECEIVED

MAR 03 2009

HOBBSOCD

Oil Conservation Division
1220 South St. Francis Dr.
Santa Fe, NM 87505

Submit to appropriate District Office

☐ AMENDED REPORT

APPLICATION FOR PERMIT TO DRILL, RE-ENTER, DEEPEN,
PLUGBACK, OR ADD A ZONE

¹ Operator Name and Address ConocoPhillips Company P.O. Box 51810 Midland Texas 79710		² OGRID Number 217817
³ Property Code 31471	⁵ Property Name State F-1	³ API Number 30 -025 39361
⁹ Proposed Pool 1 Hardy: Blinebry		⁶ Well No. 28
¹⁰ Proposed Pool 2 Hardy: Tubb/Drinkard		

⁷ Surface Location

UL or lot no. 7	Section 1	Township 21S	Range 36E	Lot Idn	Feet from the 2080	North/South line North	Feet from the 2099	East/West line East	County Lea
--------------------	--------------	-----------------	--------------	---------	-----------------------	---------------------------	-----------------------	------------------------	---------------

⁸ Proposed Bottom Hole Location If Different From Surface

UL or lot no.	Section	Township	Range	Lot Idn	Feet from the	North/South line	Feet from the	East/West line	County
---------------	---------	----------	-------	---------	---------------	------------------	---------------	----------------	--------

Additional Well Information

¹¹ Work Type Code N	¹² Well Type Code O	¹³ Cable/Rotary R	¹⁴ Lease Type Code S	¹⁵ Ground Level Elevation 3494'
¹⁶ Multiple Yes	¹⁷ Proposed Depth 7200'	¹⁸ Formation Abo	¹⁹ Contractor H & P #306	²⁰ Spud Date 03/29/2009

²¹ Proposed Casing and Cement Program

Hole Size	Casing Size	Casing weight/foot	Setting Depth	Sacks of Cement	Estimated TOC
12.25	8.625	24#	1384	600	Surface
7.875	5.5	17	7190	1000	Surface

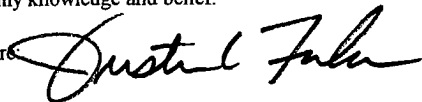
²² Describe the proposed program. If this application is to DEEPEN or PLUG BACK, give the data on the present productive zone and proposed new productive zone. Describe the blowout prevention program, if any. Use additional sheets if necessary.

See Attached sheet for Drilling Mud and BOP program

Permit Expires 2 Years From Approval
Date Unless Drilling Underway

Conditions of Approval to drill & test all new zones separately but cannot produce Downhole commingle until DHC is approved in Hobbs District office according to R-11363

²³ I hereby certify that the information given above is true and complete to the best of my knowledge and belief.

Signature: 

Printed name: Justin C. Firkins

Title: Regulatory Specialist

E-mail Address:
justin.c.firkins@conocophillips.com

Date:
02/13/2009

Phone:
432-688-6913

OIL CONSERVATION DIVISION

Approved by:

Title:

PETROLEUM ENGINEER

Approval Date:

03/19/09

Expiration Date:

03/19/11

Conditions of Approval Attached ☐

State F-1 #28

15. Proposed Depth = 7200' MD RKB

19. Proposed Casing and Cement Program						
Type	Hole Size (inches)	Casing OD (inches)	Casing Wt (lb/ft)	Setting Depth (feet)	Sacks of Cement	Estimated TOC (feet)
Surface	12.25	8.625	24	1384	600	0
Prod	7.875	5.5	17	7190	1000	0

Casing and Cement Program: Additional Comments	
Fresh Water and Fresh Water Mud will be used for drilling the surface hole.	
Brine and Brine Based Mud will be used for drilling the production hole.	

Proposed Blowout Prevention Program			
Type	Working Pressure	Test Pressure	Manufacturer
Annular	2000	1000	
Blind Ram	2000	2000	
Pipe Ram	2000	2000	

DISTRICT I
1625 N. French Dr., Hobbs, NM 88240

State of New Mexico
Energy, Minerals & Natural Resources Department

Form C-102
Revised October 12, 2005
Submit to Appropriate District Office
State Lease - 4 Copies
Fee Lease - 3 Copies

DISTRICT II
1301 W. Grand Avenue, Artesia, NM 88210

RECEIVED
OIL CONSERVATION DIVISION
1220 South St. Frances Dr.
Santa Fe, NM 87505
MAR 03 2009

DISTRICT III
1000 Rio Brazos Rd., Aztec, NM 87410

DISTRICT IV
1220 S. St. Francis Dr., Santa Fe, NM 87505

HOBBSOCD

☐ AMENDED REPORT

WELL LOCATION AND ACREAGE DEDICATION PLAT

API Number 30-025 ~ 39361	Pool Code 29710	Pool Name Hardy: Blinebry
Property Code 31471	Property Name STATE F-1	Well Number 28
OGRID No. 217817	Operator Name CONOCOPHILLIPS	Elevation 3494'

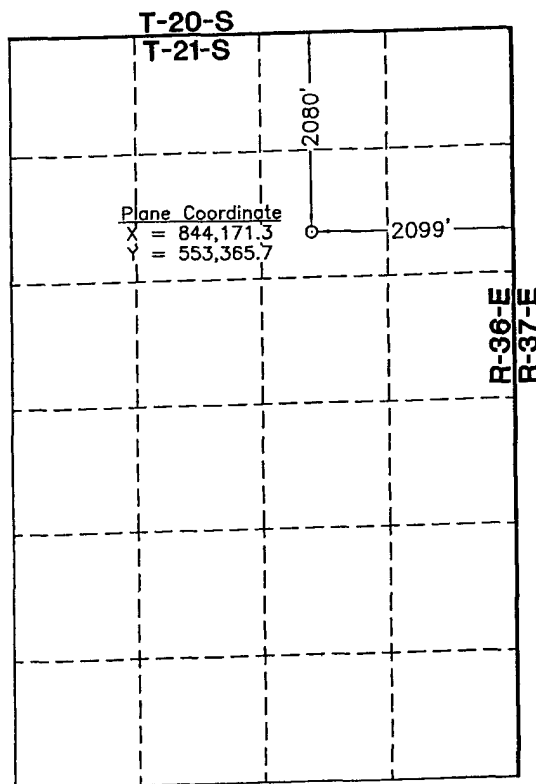
Surface Location

UL or lot No.	Section	Township	Range	Lot Idn	Feet from the	North/South line	Feet from the	East/West line	County
7	1	21 S	36 E		2080	NORTH	2099	EAST	LEA

Bottom Hole Location If Different From Surface

UL or lot No.	Section	Township	Range	Lot Idn	Feet from the	North/South line	Feet from the	East/West line	County
Dedicated Acres 40	Joint or Infill	Consolidation Code	Order No.						

NO ALLOWABLE WILL BE ASSIGNED TO THIS COMPLETION UNTIL ALL INTERESTS HAVE BEEN CONSOLIDATED OR A NON-STANDARD UNIT HAS BEEN APPROVED BY THE DIVISION



NOTE:

- 1) Plane Coordinates shown hereon are Transverse Mercator Grid and Conform to the "New Mexico Coordinate System", New Mexico East Zone, North American Datum of 1927. Distances shown hereon are mean horizontal surface values.

1" = 2000'

OPERATOR CERTIFICATION

I hereby certify the information contained herein is true and complete to the best of my knowledge and belief, and that this organization either owns a working interest or unleased mineral interest in the land including the proposed bottom hole location or has a right to drill this well at this location pursuant to a contract with an owner of such a mineral or working interest, or to a voluntary pooling agreement or a compulsory pooling order heretofore entered by the division.

Justin C. Firkins
Signature Date 2-13-09
Justin C. Firkins
Printed Name

SURVEYOR CERTIFICATION

I hereby certify that the well location shown on this plat was plotted from field notes of actual surveys made by me or under my supervision and that the same is true and correct to the best of my belief.

February 6, 2009

Date of Survey
Signature & Seal of Professional Surveyor

W.O. Num
W.O. Num 2009-0037
Certificate No. MACON 12185

DISTRICT I
1625 N. French Dr., Hobbs, NM 88240

State of New Mexico
Energy, Minerals & Natural Resources Department

Form C-102
Revised October 12, 2005
Submit to Appropriate District Office
State Lease - 4 Copies
Fee Lease - 3 Copies

DISTRICT II
1301 W. Grand Avenue, Artesia, NM 88210

RECEIVED
OIL CONSERVATION DIVISION
1220 South St. Frances Dr.

DISTRICT III
1000 Rio Brazos Rd., Aztec, NM 87410

MAR 03 2009 Santa Fe, NM 87505

DISTRICT IV
1220 S. St. Francis Dr., Santa Fe, NM 87505

HOBBSOCD

☐ AMENDED REPORT

WELL LOCATION AND ACREAGE DEDICATION PLAT

API Number 30-025 - 39361	Pool Code 29760	Pool Name Hardy: Tubb Drinkard
Property Code 31471	Property Name STATE F-1	Well Number 28
OGRID No. 217817	Operator Name CONOCOPHILLIPS	Elevation 3494'

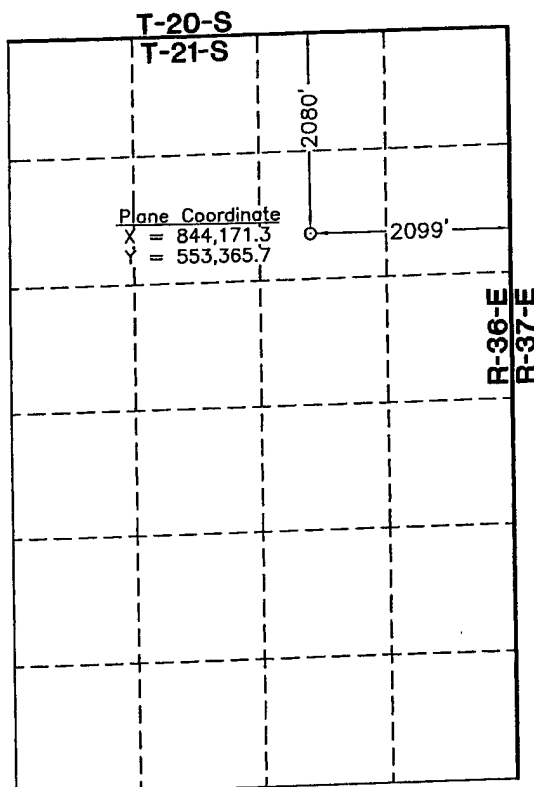
Surface Location

UL or lot No. 7	Section 1	Township 21 S	Range 36 E	Lot Idn	Feet from the 2080	North/South line NORTH	Feet from the 2099	East/West line EAST	County LEA
--------------------	--------------	------------------	---------------	---------	-----------------------	---------------------------	-----------------------	------------------------	---------------

Bottom Hole Location If Different From Surface

UL or lot No.	Section	Township	Range	Lot Idn	Feet from the	North/South line	Feet from the	East/West line	County
Dedicated Acres 40	Joint or Infill	Consolidation Code	Order No.						

NO ALLOWABLE WILL BE ASSIGNED TO THIS COMPLETION UNTIL ALL INTERESTS HAVE BEEN CONSOLIDATED OR A NON-STANDARD UNIT HAS BEEN APPROVED BY THE DIVISION



1" = 2000'

NOTE:

- 1) Plane Coordinates shown hereon are Transverse Mercator Grid and Conform to the "New Mexico Coordinate System", New Mexico East Zone, North American Datum of 1927. Distances shown hereon are mean horizontal surface values.

OPERATOR CERTIFICATION

I hereby certify the information contained herein is true and complete to the best of my knowledge and belief, and that this organization either owns a working interest or unleased mineral interest in the land including the proposed bottom hole location or has a right to drill this well at this location pursuant to a contract with an owner of such a mineral or working interest, or is a voluntary pooling agreement or a compulsory pooling order heretofore entered by the division.

Justin C. Firkins 2-13-09
Signature Date
Justin C. Firkins
Printed Name

SURVEYOR CERTIFICATION

I hereby certify that the well location shown on this plat was plotted from field notes of actual surveys made by me or under my supervision and that the same is true and correct to the best of my belief.

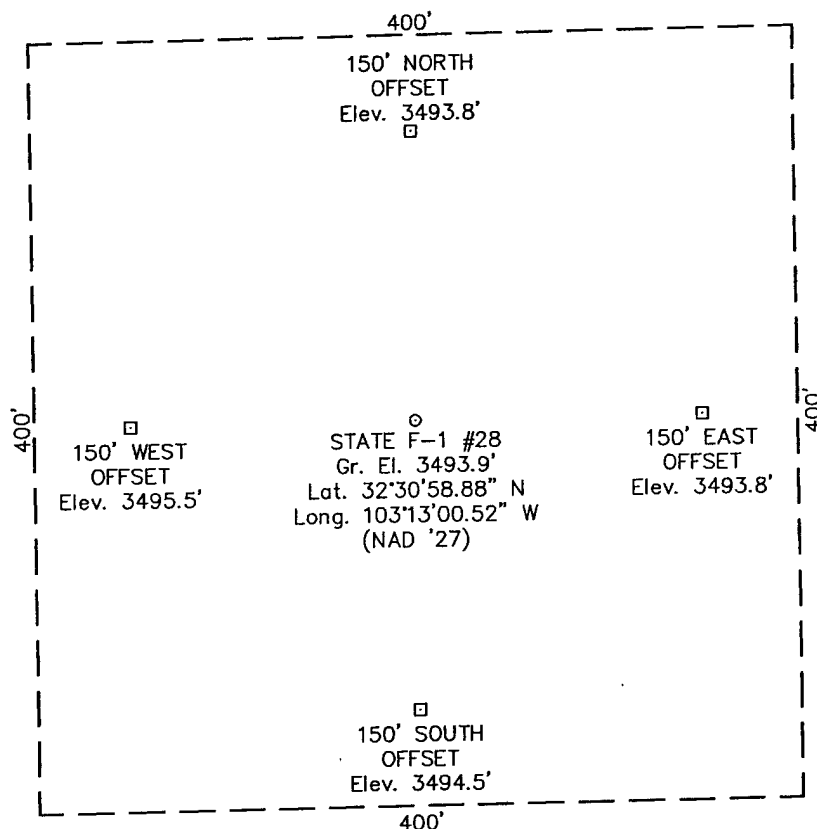
February 6, 2009

Date of Survey
Signature & Seal of Professional Surveyor

W.O. Num. 2009-0037
Certificate No. MACON McDONALD 12185

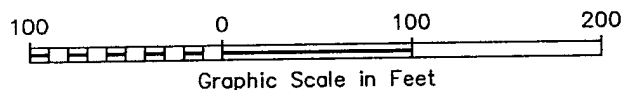
SECTION 1, TOWNSHIP 21 SOUTH, RANGE 36 EAST, N.M.P.M.
LEA COUNTY NEW MEXICO

L-2009-0037-A



DRIVING DIRECTIONS

FROM THE INTERSECTION OF AVENUE "O" AND TURNER IN EUNICE, NEW MEXICO, GO NORTH ON TURNER 2.0 MILES TO A DIRT ROAD ON WEST (LEFT) SIDE OF ROAD. THEN TRAVEL WEST AND NORTHWEST ON SAID DIRT ROAD, 3.8 MILES TO A CATTLE GUARD ON NORTH (RIGHT) SIDE OF ROAD. THEN GO NORTHEAST ON LEASE ROAD / PIPELINE RIGHT-OF-WAY 1.1 MILES TO A TWO-TRACK TRAIL ROAD ON WEST (LEFT) SIDE OF ROAD, THEN GO WEST ON SAID TWO-TRACK TRAIL ROAD, 0.2 MILE TO A POINT BEING APPROXIMATELY 300 FEET SOUTH OF THE PROPOSED LOCATION.



CONOCO PHILLIPS

STATE F-1 #28

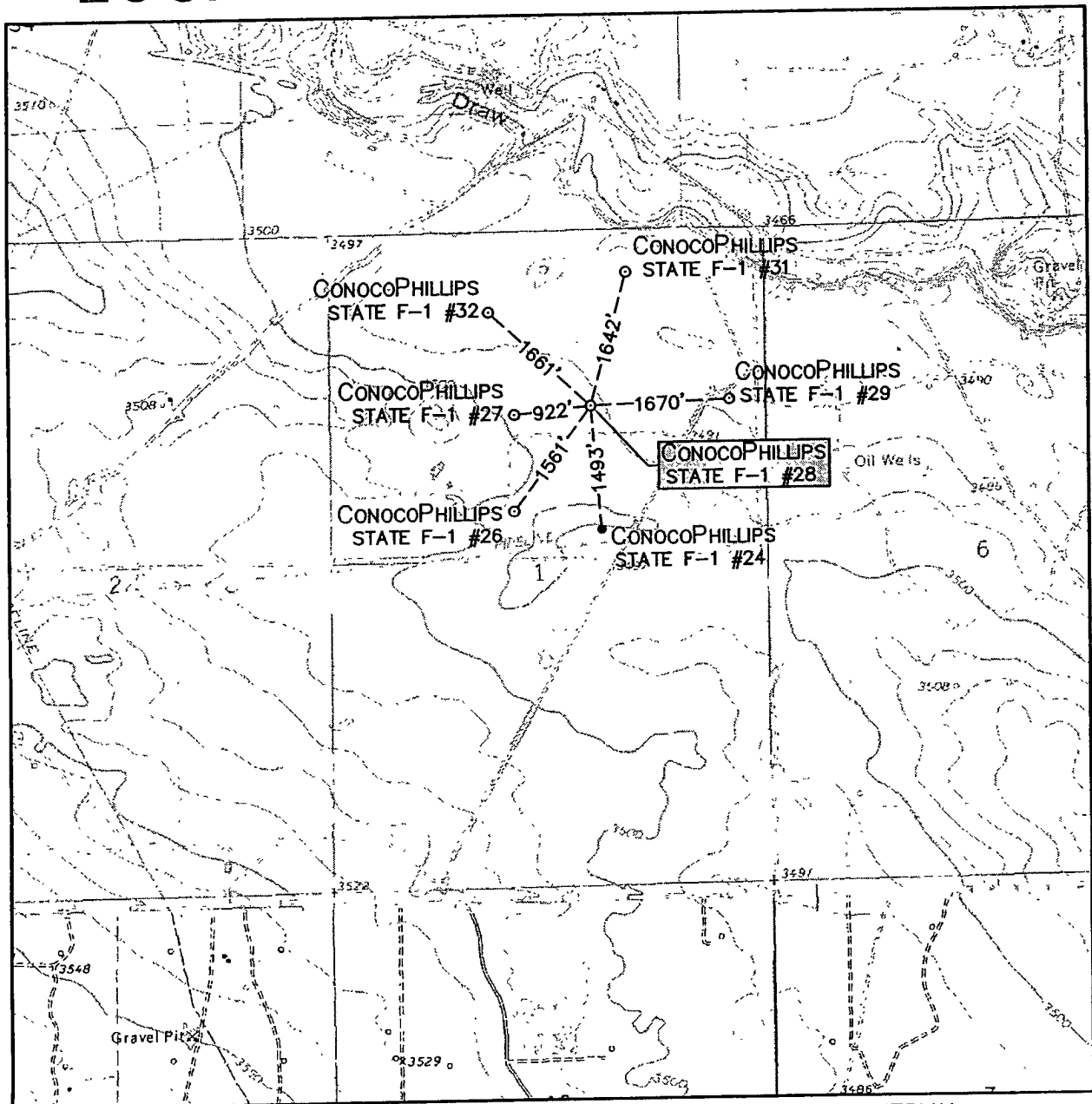
Located 2080' FNL & 2099' FEL, Section 1
Township 21 South, Range 36 East, N.M.P.M.
Lea County, New Mexico



110 W. LOUISIANA, STE. 110
MIDLAND TEXAS, 79701
(432) 687-0865 - (432) 687-0868 FAX

Drawn By: LVA	Date: February 11, 2009
Scale: 1"=100'	Field Book: 422 / 67-71
Revision Date:	Quadrangle: Hobbs SW
W.O. No: 2009-0037	Dwg. No.: L-2009-0037-A

LOCATION VERIFICATION MAP



SCALE: 1" = 2000'

CONTOUR INTERVAL:
HOBBS SW - 5'

SEC. 1 TWP. 21-S RGE. 36-E

SURVEY N.M.P.M.

COUNTY LEA

DESCRIPTION 2080' FNL & 2099' FEL

ELEVATION 3494'

OPERATOR CONOCOPHILLIPS

LEASE STATE F-1

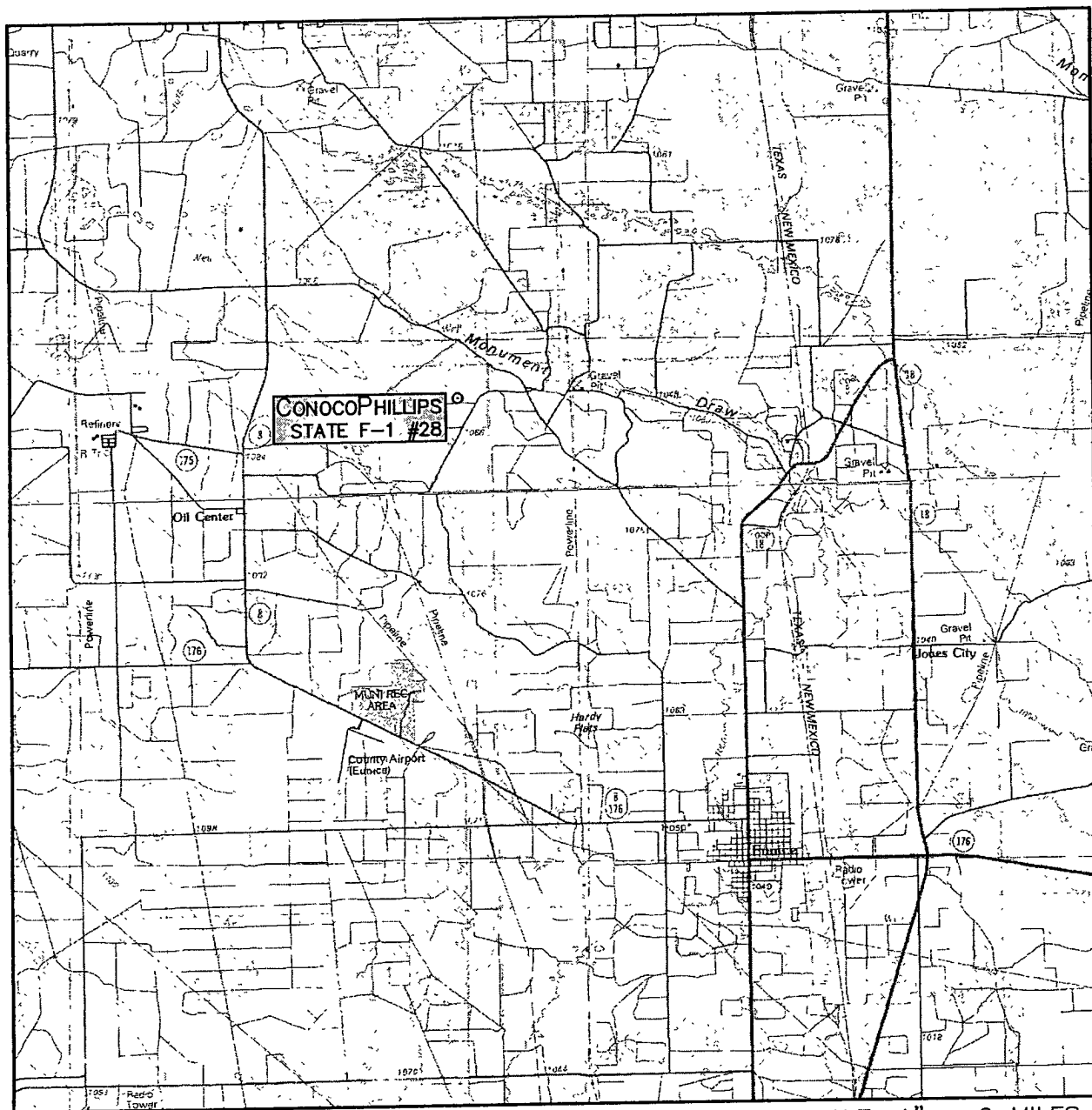
U.S.G.S. TOPOGRAPHIC MAP
HOBBS SW



WEST
COMPANY
of Midland, Inc.

110 W. LOUISIANA, STE. 110
MIDLAND TEXAS, 79701
(432) 687-0865 - (432) 687-0868 FAX

VICINITY MAP



SCALE: 1" = 2 MILES

SEC. 1 TWP. 21-S RGE. 36-E

SURVEY N.M.P.M.

COUNTY LEA

DESCRIPTION 2080' FNL & 2099' FEL

ELEVATION 3494'

OPERATOR CONOCOPHILLIPS

LEASE STATE F-1



110 W. LOUISIANA, STE. 110
MIDLAND TEXAS, 79701
(432) 687-0865 - (432) 687-0868 FAX