

District I

1625 N French Dr., Hobbs, NM 88240

District II

1301 W. Grand Avenue, Artesia, NM 88200

District III

1000 Rio Brazos Road, Aztec, NM 87410

District IV

1220 S. St Francis Dr., Santa Fe, NM 87505

**RECEIVED**State of New Mexico  
Energy Minerals and Natural Resources

Form C-101

June 16, 2008

MAR 03 2009

HOBBSD

Oil Conservation Division

1220 South St. Francis Dr.

Santa Fe, NM 87505

Submit to appropriate District Office

☐ AMENDED REPORT**APPLICATION FOR PERMIT TO DRILL, RE-ENTER, DEEPEN,  
PLUGBACK, OR ADD A ZONE**

<sup>1</sup> Operator Name and Address ConocoPhillips Company P O. Box 51810 Midland, Texas 79710-1810		<sup>2</sup> OGRID Number 217817
<sup>3</sup> Property Code 31471	<sup>5</sup> Property Name State F-1	<sup>3</sup> API Number 30-025-39363 <sup>6</sup> Well No. 32
<sup>9</sup> Proposed Pool 1 Hardy Blinbry		<sup>10</sup> Proposed Pool 2 Hardy. Tubb/Drunkard

**7 Surface Location**

UL or lot no	Section	Township	Range	Lot Idn	Feet from the	North/South line	Feet from the	East/West line	County
3	1	21S	36E		938	North	1943	West	Lea

**8 Proposed Bottom Hole Location If Different From Surface**

UL or lot no	Section	Township	Range	Lot Idn	Feet from the	North/South line	Feet from the	East/West line	County
--------------	---------	----------	-------	---------	---------------	------------------	---------------	----------------	--------

**Additional Well Information**

<sup>11</sup> Work Type Code N	<sup>12</sup> Well Type Code O	<sup>13</sup> Cable/Rotary R	<sup>14</sup> Lease Type Code S	<sup>15</sup> Ground Level Elevation 3493'
<sup>16</sup> Multiple Yes	<sup>17</sup> Proposed Depth 7230'	<sup>18</sup> Formation Abo	<sup>19</sup> Contractor H&P #306	<sup>20</sup> Spud Date 05/15/09

**21 Proposed Casing and Cement Program**

Hole Size	Casing Size	Casing weight/foot	Setting Depth	Sacks of Cement	Estimated TOC
12.25"	8.625"	24#	1381'	600	Surface
7.875"	5.5"	17#	7220'	1000	Surface

<sup>22</sup> Describe the proposed program. If this application is to DEEPEN or PLUG BACK, give the data on the present productive zone and proposed new productive zone. Describe the blowout prevention program, if any. Use additional sheets if necessary.

See attached drilling program for Drilling Mud and BOP program

**Permit Expires 2 Years From Approval  
Date Unless Drilling Underway**

<sup>23</sup> I hereby certify that the information given above is true and complete to the best of my knowledge and belief.

Signature:

Printed name: Justin C. Firkins

Title: Regulatory Specialist

E-mail Address: justin.c.firkins@conocophillips.com

Date: 03/02/2009

Phone: 432-688-6913

**OIL CONSERVATION DIVISION**

Approved by:

Title:

PETROLEUM ENGINEER

Approval Date:

03/09/09

Expiration Date:

03/19/11

Conditions of Approval Approval to drill & test all new zones separate, but cannot produce Downhole commingle until DHC is approved in Hobbs District office according to R-11363.

State F-1 #32
---------------

15. Proposed Depth = 7230' MD RKB
-----------------------------------

19. Proposed Casing and Cement Program						
Type	Hole Size (inches)	Casing OD (inches)	Casing Wt (lb/ft)	Setting Depth (feet)	Sacks of Cement	Estimated TOC (feet)
Surface	12.25	8.625	24	1381	600	0
Prod	7.875	5.5	17	7220	1000	0

Casing and Cement Program: Additional Comments	
Fresh Water and Fresh Water Mud will be used for drilling the surface hole.	
Brine and Brine Based Mud will be used for drilling the production hole.	

Proposed Blowout Prevention Program			
Type	Working Pressure	Test Pressure	Manufacturer
Annular	2000	1000	
Blind Ram	2000	2000	
Pipe Ram	2000	2000	

DISTRICT I  
1625 N. French Dr., Hobbs, NM 88240

State of New Mexico  
Energy, Minerals & Natural Resources Department

Form C-102  
Revised October 12, 2005  
Submit to Appropriate District Office  
State Lease - 4 Copies  
Fee Lease - 3 Copies

DISTRICT II  
1301 W. Grand Avenue, Artesia, NM 88210

**RECEIVED**  
OIL CONSERVATION DIVISION  
South St. Frances Dr.  
Santa Fe, NM 87505

DISTRICT III  
1000 Rio Brazos Rd., Aztec, NM 87410

MAR 03 2009

DISTRICT IV  
1220 S. St. Francis Dr., Santa Fe, NM 87505

**HOBBSOCD**

☐ AMENDED REPORT

WELL LOCATION AND ACREAGE DEDICATION PLAT

API Number 30-025 - <b>39363</b>	Pool Code 29710	Pool Name Hardy: Blinebry
Property Code 31471	Property Name STATE F-1	Well Number 32
OGRID No. 217817	Operator Name CONOCOPHILLIPS	Elevation 3493'

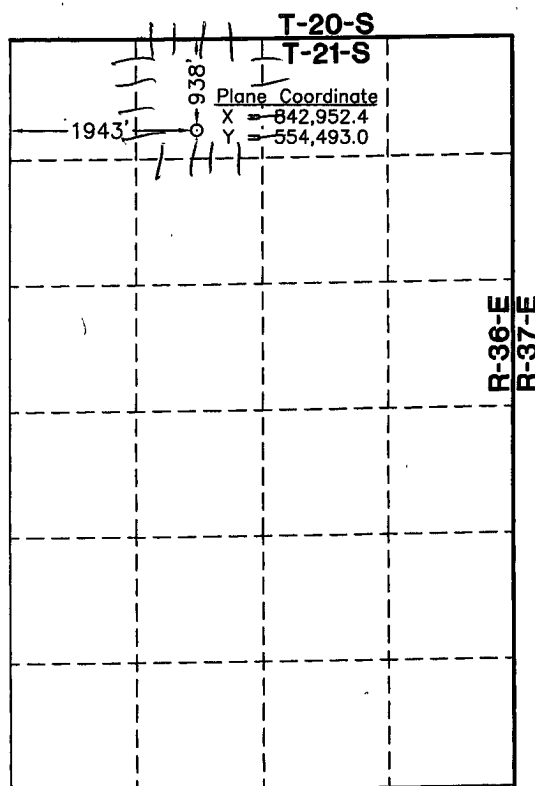
Surface Location

UL or lot No. 3	Section 1	Township 21 S	Range 36 E	Lot Idn	Feet from the 938	North/South line NORTH	Feet from the 1943	East/West line WEST	County LEA
--------------------	--------------	------------------	---------------	---------	----------------------	---------------------------	-----------------------	------------------------	---------------

Bottom Hole Location If Different From Surface

UL or lot No.	Section	Township	Range	Lot Idn	Feet from the	North/South line	Feet from the	East/West line	County
Dedicated Acres 40	Joint or Infill	Consolidation Code	Order No.						

NO ALLOWABLE WILL BE ASSIGNED TO THIS COMPLETION UNTIL ALL INTERESTS HAVE BEEN CONSOLIDATED OR A NON-STANDARD UNIT HAS BEEN APPROVED BY THE DIVISION



NOTE:

- 1) Plane Coordinates shown hereon are Transverse Mercator Grid and Conform to the "New Mexico Coordinate System", New Mexico East Zone, North American Datum of 1927. Distances shown hereon are mean horizontal surface values.

1" = 2000'

OPERATOR CERTIFICATION

I hereby certify the information contained herein is true and complete to the best of my knowledge and belief, and that this organization either owns a working interest or unleased mineral interest in the land including the proposed bottom hole location or has a right to drill this well at this location pursuant to a contract with an owner of such a mineral or working interest, or to a voluntary pooling agreement or a compulsory pooling order heretofore entered by the division.

*Justin C. Firkins* 3/2/09  
Signature Date  
Justin C. Firkins  
Printed Name

SURVEYOR CERTIFICATION

I hereby certify that the well location shown on this plat was plotted from field notes of actual surveys made by me or under my supervision and that the same is true and correct to the best of my belief

February 6, 2009

Date of Survey  
Signature & Seal of Professional Surveyor

*W.O. Num. 2009-0041*  
12185

W.O. Num. 2009-0041  
Certificate No. MACON McDONALD PROFESSIONAL SURVEYOR

DISTRICT I  
1625 N. French Dr., Hobbs, NM 88240

DISTRICT II  
1301 W. Grand Avenue, Artesia, NM 88210

DISTRICT III  
1000 Rio Brazos Rd., Aztec, NM 87410

DISTRICT IV  
1220 S. St. Francis Dr., Santa Fe, NM 87505

State of New Mexico

Energy, Minerals & Natural Resources Department

RECEIVED CONSERVATION DIVISION

MAR 03 2009  
1220 South St. Frances Dr.  
Santa Fe, NM 87505

HOBBSD

Form C-102  
Revised October 12, 2005  
Submit to Appropriate District Office  
State Lease - 4 Copies  
Fee Lease - 3 Copies

☐ AMENDED REPORT

WELL LOCATION AND ACREAGE DEDICATION PLAT

API Number 30-025- <b>39363</b>	Pool Code 29760	Pool Name Hardy: Tubb-Drinkard
Property Code 31471	Property Name STATE F-1	Well Number 32
OGRID No. 217817	Operator Name CONOCOPHILLIPS	Elevation 3493'

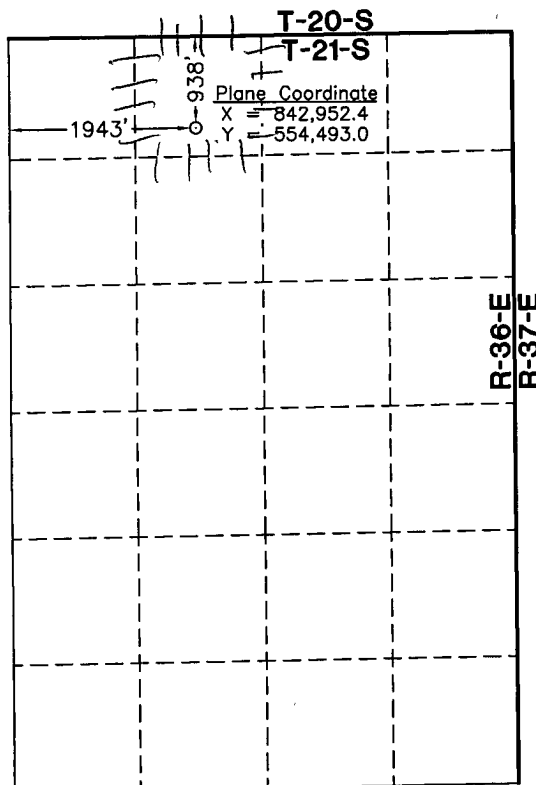
Surface Location

UL or lot No.	Section	Township	Range	Lot Idn	Feet from the	North/South line	Feet from the	East/West line	County
3	1	21 S	36 E		938	NORTH	1943	WEST	LEA

Bottom Hole Location If Different From Surface

UL or lot No.	Section	Township	Range	Lot Idn	Feet from the	North/South line	Feet from the	East/West line	County
Dedicated Acres 40	Joint or Infill	Consolidation Code	Order No.						

NO ALLOWABLE WILL BE ASSIGNED TO THIS COMPLETION UNTIL ALL INTERESTS HAVE BEEN CONSOLIDATED OR A NON-STANDARD UNIT HAS BEEN APPROVED BY THE DIVISION



NOTE:

- 1) Plane Coordinates shown hereon are Transverse Mercator Grid and Conform to the "New Mexico Coordinate System", New Mexico East Zone, North American Datum of 1927. Distances shown hereon are mean horizontal surface values.

1" = 2000'

OPERATOR CERTIFICATION

I hereby certify the the information contained herein is true and complete to the best of my knowledge and belief, and that this organization either owns a working interest or unleased mineral interest in the land including the proposed bottom hole location or has a right to drill this well at this location pursuant to a contract with an owner of such a mineral or working interest, or to a voluntary pooling agreement or a compulsory pooling order heretofore entered by the division.

*Justin C. Firkins* 3/2/09  
Signature Date  
Justin C. Firkins  
Printed Name

SURVEYOR CERTIFICATION

I hereby certify that the well location shown on this plat was plotted from field notes of actual surveys made by me or under my supervision and that the same is true and correct to the best of my belief

February 6, 2009

Date of Survey  
Signature & Seal of Professional Surveyor

*MAACON McDONALD*  
NEW MEXICO  
12185

W.O. Num. 2009-0041

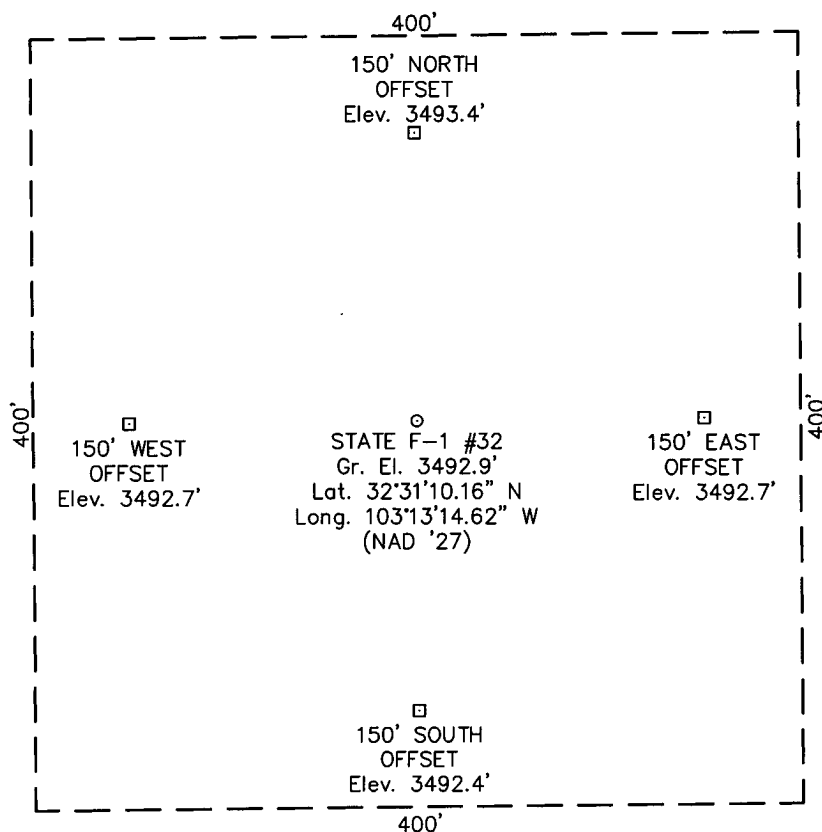
Certificate No. MAACON McDONALD 12185

## SECTION 1, TOWNSHIP 21 SOUTH, RANGE 36 EAST, N.M.P.M.

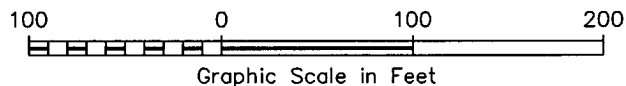
LEA COUNTY

NEW MEXICO

L-2009-0041-A

DRIVING DIRECTIONS

FROM THE INTERSECTION OF AVENUE "O" AND TURNER IN EUNICE, NEW MEXICO, GO NORTH ON TURNER 2.0 MILES TO A DIRT ROAD ON WEST (LEFT) SIDE OF ROAD. THEN TRAVEL WEST AND NORTHWEST ON SAID DIRT ROAD, 3.8 MILES TO A CATTLE GUARD ON NORTH (RIGHT) SIDE OF ROAD. THEN GO NORTHEAST ON LEASE ROAD / PIPELINE RIGHT-OF-WAY 1.1 MILES TO A TWO-TRACK TRAIL ROAD ON WEST (LEFT) SIDE OF ROAD, THEN GO WEST ON SAID TWO-TRACK TRAIL ROAD, 0.3 MILE TO A POINT BEING APPROXIMATELY 1200 FEET SOUTH OF THE PROPOSED LOCATION.

**CONOCOPHILLIPS****STATE F-1 #32**

Located 938' FNL & 1943' FWL, Section 1  
Township 21 South, Range 36 East, N.M.P.M.  
Lea County, New Mexico

Drawn By: LVA

Date: February 11, 2009

Scale: 1"=100'

Field Book: 422 / 67-71

Revision Date:

Quadrangle: Hobbs SW

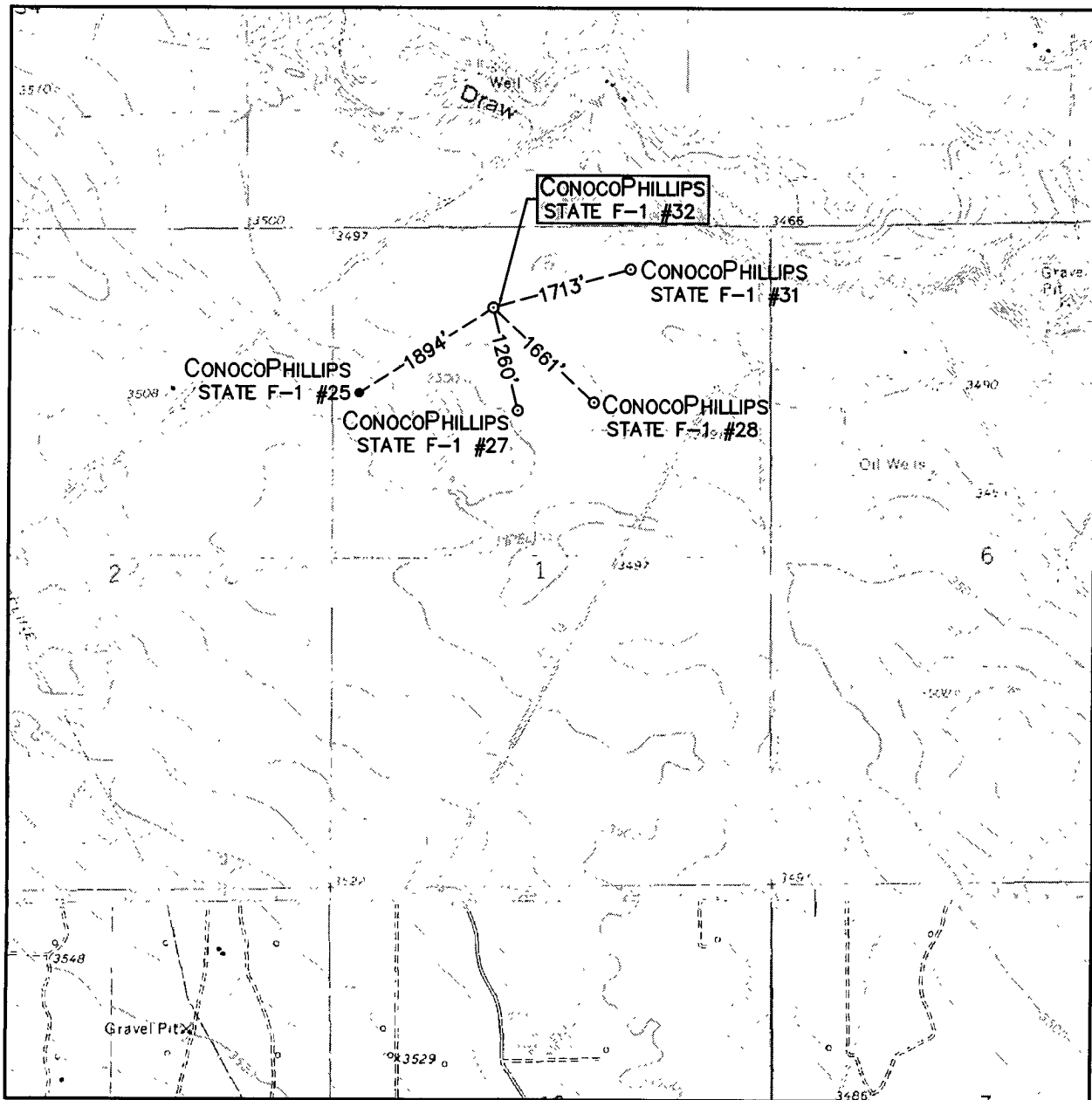
W.O. No: 2009-0041

Dwg. No.: L-2009-0041-A



110 W. LOUISIANA, STE. 110  
MIDLAND TEXAS, 79701  
(432) 687-0865 - (432) 687-0868 FAX

# LOCATION VERIFICATION MAP



SCALE: 1" = 2000'

CONTOUR INTERVAL:  
HOBBS SW - 5'

SEC. 1 TWP. 21-S RGE. 36-E

SURVEY N.M.P.M.

COUNTY LEA

DESCRIPTION 938' FNL & 1943' FWL

ELEVATION 3493'

OPERATOR CONOCOPHILLIPS

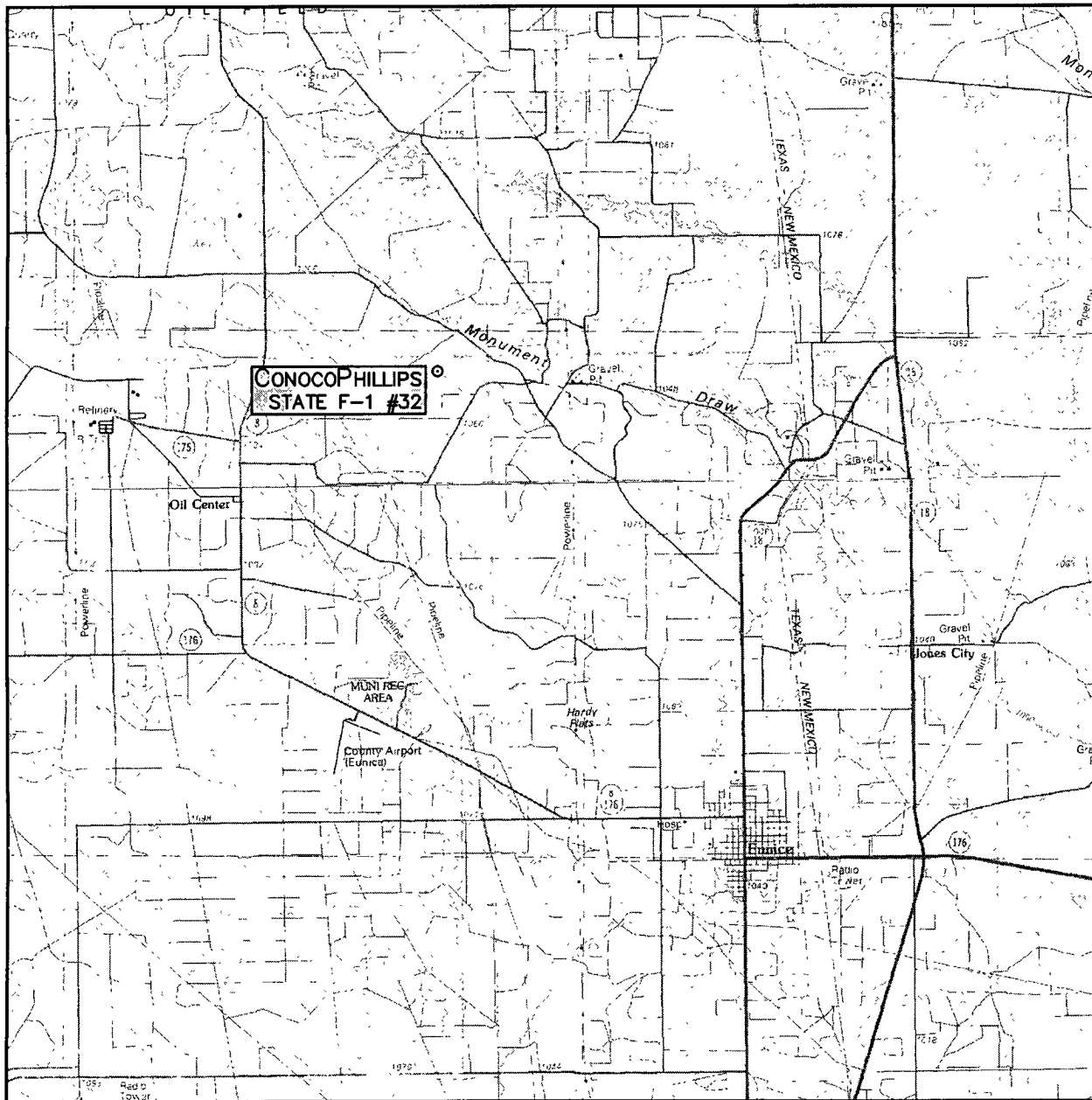
LEASE STATE F-1

U.S.G.S. TOPOGRAPHIC MAP  
HOBBS SW



110 W. LOUISIANA, STE. 110  
MIDLAND TEXAS, 79701  
(432) 687-0865 - (432) 687-0868 FAX

# VICINITY MAP



SCALE: 1" = 2 MILES

SEC. 1 TWP. 21-S RGE. 36-E

SURVEY N.M.P.M.

COUNTY LEA

DESCRIPTION 938' FNL & 1943' FWL

ELEVATION 3493'

OPERATOR CONOCO PHILLIPS

LEASE STATE F-1



110 W. LOUISIANA, STE. 110  
MIDLAND TEXAS, 79701  
(432) 687-0865 - (432) 687-0868 FAX