

RECEIVED

JAN 08 2004

DISTRICT I **HOBBSOC**
1625 N. FRENCH DR., HOBBBS, NM 86240

State of New Mexico
Energy, Minerals and Natural Resources Department

OIL CONSERVATION DIVISION

1220 SOUTH ST. FRANCIS DR.
Santa Fe, New Mexico 87505

Form C-102
Revised October 12, 2005
Submit to Appropriate District Office
State Lease - 4 Copies
Fee Lease - 3 Copies

DISTRICT II
1301 W. GRAND AVENUE, ARTESIA, NM 86210

DISTRICT III
1000 Rio Brazos Rd., Aztec, NM 87410

DISTRICT IV
1220 S. ST. FRANCIS DR., SANTA FE, NM 87505

WELL LOCATION AND ACREAGE DEDICATION PLAT

☐ AMENDED REPORT

API Number 30-025-38726	Pool Code 44500	Pool Name MALJAMAR; YESO, West
Property Code 302456	Property Name BC FEDERAL	Well Number 21
OGRID No. 229137	Operator Name COG OPERATING, LLC	Elevation 3941'

Surface Location

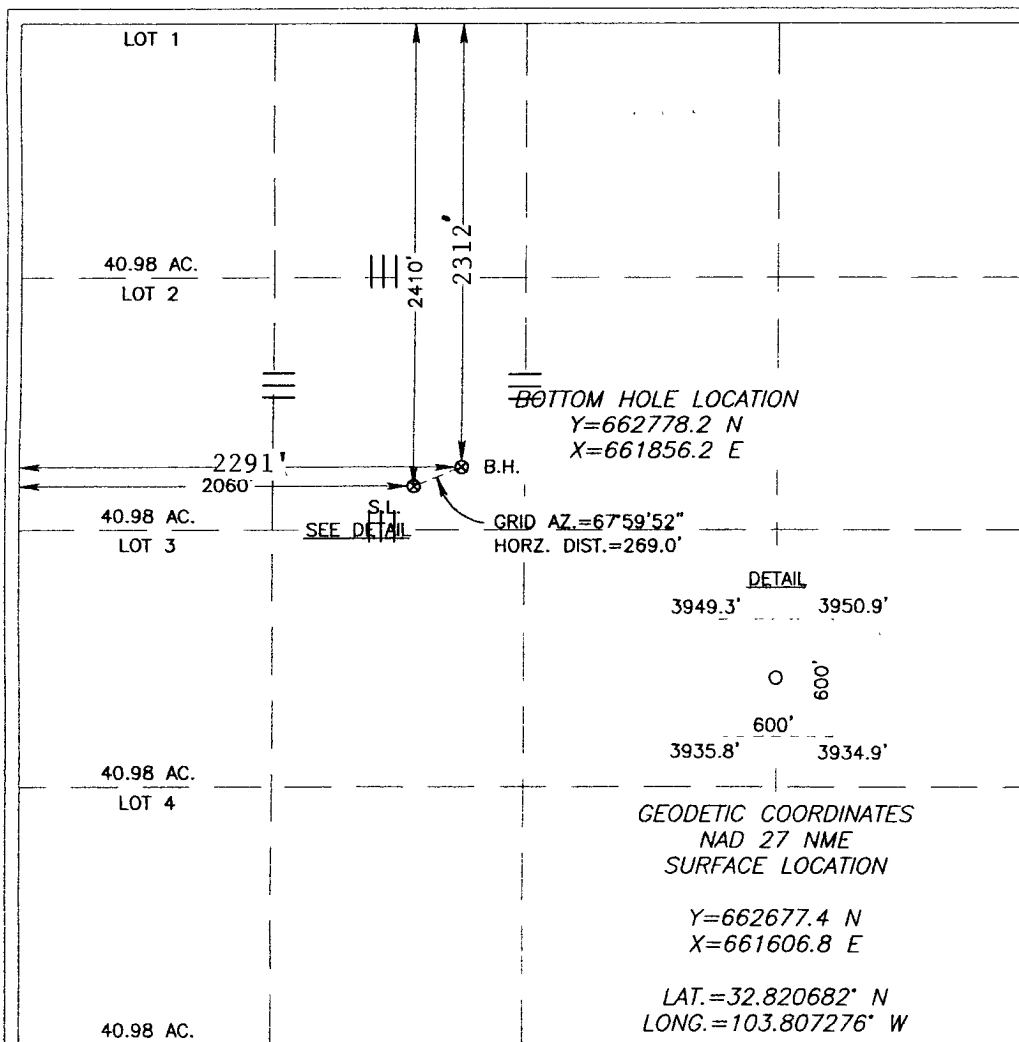
UL or lot No.	Section	Township	Range	Lot Idn	Feet from the	North/South line	Feet from the	East/West line	County
F	19	17-S	32-E		2410	NORTH	2060	WEST	LEA

Bottom Hole Location If Different From Surface

UL or lot No.	Section	Township	Range	Lot Idn	Feet from the	North/South line	Feet from the	East/West line	County
F	19	17-S	32-E		2312	NORTH	2291	WEST	LEA

Dedicated Acres	Joint or Infill	Consolidation Code	Order No.
40			NSL-5994

NO ALLOWABLE WILL BE ASSIGNED TO THIS COMPLETION UNTIL ALL INTERESTS HAVE BEEN CONSOLIDATED
OR A NON-STANDARD UNIT HAS BEEN APPROVED BY THE DIVISION



OPERATOR CERTIFICATION

I hereby certify that the information herein is true and complete to the best of my knowledge and belief, and that this organization either owns a working interest or unleased mineral interest in the land including the proposed bottom hole location or has a right to drill this well at this location pursuant to a contract with an owner of such mineral or working interest, or to a voluntary pooling agreement or a compulsory pooling order heretofore entered by the division.

Phyllis A. Edwards 10-15-07
Signature Date

Phyllis A. Edwards
Printed Name

Regulatory Analyst

SURVEYOR CERTIFICATION

I hereby certify that the well location shown on this plat was plotted from field notes of actual surveys made by me or under my supervision, and that the same is true and correct to the best of my belief.

OCTOBER 12 2007
Date Surveyed
Signature & Seal of Professional Surveyor
3239
10/12/07
Certificate No. GARY EIDSON 12841
RONALD EIDSON 3239