

District I
1625 N. French Dr., Hobbs, NM
District II
1301 W. Grand Avenue, Artesia, NM 88210
District III
1000 Rio Brazos Rd., Aztec, NM 87410
District IV
1220 S. St. Francis Dr., Santa Fe, NM 87505

RECEIVED
State of New Mexico
Energy, Minerals & Natural Resources Department
OIL CONSERVATION DIVISION
FEB 24 2008
HOBBS
1220 South St. Francis Dr.
Santa Fe, NM 87505

Form C-102
Revised October 12, 2005
Submit to Appropriate District Office
State Lease- 4 Copies
Fee Lease- 3 Copies

☐ AMENDED REPORT

WELL LOCATION AND ACREAGE DEDICATION PLAT

API Number 30-025-38993	Pool Code 44500	Pool Name MALJAMAR; YESO, WEST
Property Code 302498	Property Name GC FEDERAL	Well Number 10
OGRID No. 229137	Operator Name COG OPERATING LLC.	Elevation 3936.8'

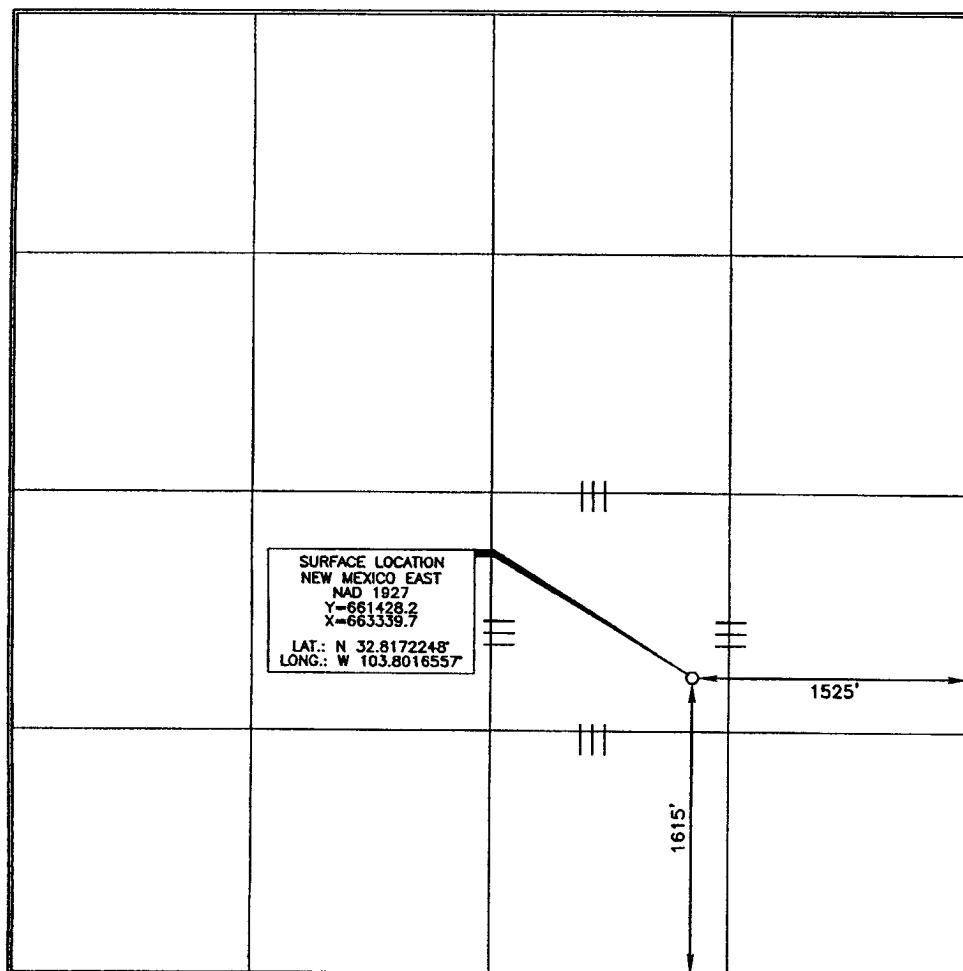
Surface Location

UL or lot no. J	Section 19	Township 17 SOUTH	Range 32 EAST, N.M.P.M.	Lot Idn	Feet from the 1615'	North/South line SOUTH	Feet from the 1525'	East/West line EAST	County LEA
--------------------	---------------	----------------------	----------------------------	---------	------------------------	---------------------------	------------------------	------------------------	---------------

Bottom Hole Location If Different From Surface

UL or lot no.	Section	Township	Range	Lot Idn	Feet from the	North/South line	Feet from the	East/West line	County
Dedicated Acres 40		Joint or Infill	Consolidation Code	Order No.					

No allowable will be assigned to this completion until all interests have been consolidated or a non-standard unit has been approved by the division.



OPERATOR CERTIFICATION

I hereby certify that the information contained herein is true and complete to the best of my knowledge and belief, and that this organization either owns a working interest or unleased mineral interest in the land including the proposed bottom hole location or has a right to drill this well at this location pursuant to a contract with an owner of such a mineral or working interest, or to a voluntary pooling agreement or a compulsory pooling order heretofore entered by the division.

Phyllis A. Edwards
Signature Date 4-28-08

Phyllis A. Edwards
Printed Name Regulatory Analyst

SURVEYOR CERTIFICATION

I hereby certify that the well location shown on this plat was plotted from field notes or actual surveys made by me or under my supervision, and that the same is true and correct to the best of my belief.

MARCH 11, 2008
Date of Survey

Signature and Seal of Professional Surveyor

Terry J. Carl
Certificate Number 15079

WO# 080311WL-b (KA)