

RECEIVED

MAR 2 / 2009

HOBBSOCD

OIL CONSERVATION DIVISION

1220 South St. Francis Dr.

Santa Fe, NM 87505

WELL API NO.
30-025-38431

5. Indicate Type of Lease

STATE ☒ FEE ☐

6. State Oil & Gas Lease No.

B-1535

7. Lease Name or Unit Agreement Name

State F-1

8. Well Number 019

9. OGRID Number

217817

10. Pool name or Wildcat

Hardy: Blinebry; Hardy Tubb-Drinkard

SUNDRY NOTICES AND REPORTS ON WELLS

(DO NOT USE THIS FORM FOR PROPOSALS TO DRILL OR TO DEEPEN OR PLUG BACK TO A DIFFERENT RESERVOIR USE "APPLICATION FOR PERMIT" (FORM C-101) FOR SUCH PROPOSALS)

1. Type of Well: Oil Well ☒ Gas Well ☐ Other ☐

2. Name of Operator

ConocoPhillips Company

3. Address of Operator

P.O. Box 51810, Midland Texas 79710

4. Well Location

Unit Letter F : 3300 feet from the South line and 1980 feet from the West line
Section 1 Township 21S Range 36E NMPM County Lea11. Elevation (Show whether DR, RKB, RT, GR, etc.)
3496' GR

12. Check Appropriate Box to Indicate Nature of Notice, Report or Other Data

NOTICE OF INTENTION TO:

PERFORM REMEDIAL WORK ☐ PLUG AND ABANDON ☐
TEMPORARILY ABANDON ☐ CHANGE PLANS ☐
PULL OR ALTER CASING ☐ MULTIPLE COMPL ☐
DOWNHOLE COMMINGLE ☒OTHER: ☐

SUBSEQUENT REPORT OF:

REMEDIAL WORK ☐ ALTERING CASING ☐
COMMENCE DRILLING OPNS. ☐ P AND A ☐
CASING/CEMENT JOB ☐OTHER: ☐

13. Describe proposed or completed operations. (Clearly state all pertinent details, and give pertinent dates, including estimated date of starting any proposed work). SEE RULE 1103. For Multiple Completions: Attach wellbore diagram of proposed completion or recompletion.

ConocoPhillips Company respectfully requests approval to downhole commingle production in the Hardy: Blinebry, & Hardy: Tubb-Drinkard DHC authority (R113-63) pre-approved pool areas. The Hardy: Blinebry (29710) zone is perforated at 5706-6112, & the Hardy: Tubb-Drinkard (29760) is perforated at 6499-6778. Allocation for the above well are as follows based on well test/subtraction method:

	Oil	Gas	Water
Hardy: Blinebry	36%	62%	31%
Hardy: Tubb-Drinkard	64%	38%	69%

Commingling will not reduce the value of the total remaining production

Ownership interest in both pools is the same

DHC-HDB-0307

Spud Date:

08/11/2008

Rig Release Date:

08/24/2008

I hereby certify that the information above is true and complete to the best of my knowledge and belief.

SIGNATURE

TITLE

Regulatory Specialist

DATE

03/25/2009

Type or print name

Justin C. Firkins

E-mail address:

justin.c.firkins@conocophillips

PHONE:

432-688-6913

For State Use Only

APPROVED BY:

TITLE

PETROLEUM ENGINEER

DATE

APR 07 2009

Conditions of Approval (if any):

DISTRICT I
1625 N. French Dr., Hobbs, NM 88240

DISTRICT II
1301 W. Grand Avenue, Artesia, NM 88210

DISTRICT III
1000 Rio Brazos Rd., Aztec, NM 87410

DISTRICT IV
1220 S. St. Francis Dr., Santa Fe, NM 87505

State of New Mexico
Energy, Minerals & Natural Resources Department

OIL CONSERVATION DIVISION
1220 South St. Frances Dr.
Santa Fe, NM 87505

Form C-102
Revised October 12, 2005
Submit to Appropriate District Office
State Lease - 4 Copies
Fee Lease - 3 Copies

☐ AMENDED REPORT

WELL LOCATION AND ACREAGE DEDICATION PLAT

API Number 30-025-38431 ✓	Pool Code 29710 ✓	Pool Name Hardy; Blinebry ✓
Property Code 31471 ✓	Property Name STATE F-1 ✓	Well Number 19 ✓
OGRID No. 217817 ✓	Operator Name CONOCOPHILLIPS COMPANY ✓	Elevation 3496'

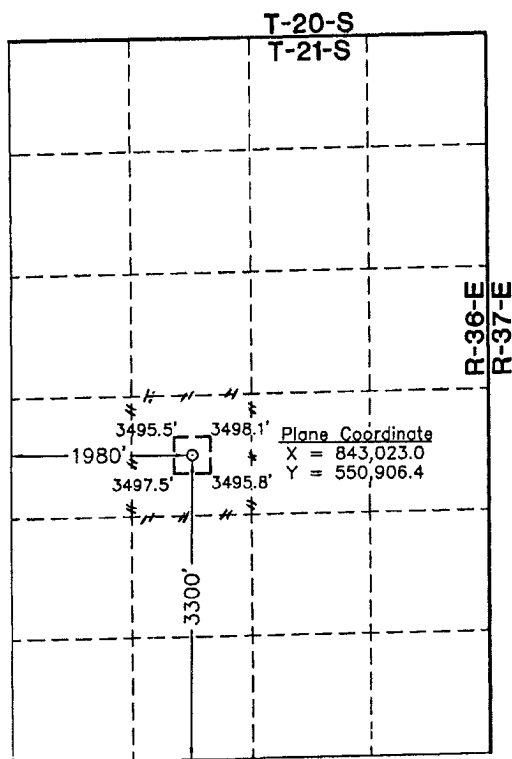
Surface Location

UL or lot No. 14	Section 1	Township 21 S	Range 36 E	Lot Idn	Feet from the 3300	North/South line SOUTH	Feet from the 1980	East/West line WEST	County LEA ✓
---------------------	--------------	------------------	---------------	---------	-----------------------	---------------------------	-----------------------	------------------------	-----------------

Bottom Hole Location If Different From Surface

UL or lot No.	Section	Township	Range	Lot Idn	Feet from the	North/South line	Feet from the	East/West line	County
Dedicated Acres 40	Joint or Infill	Consolidation Code	Order No.						

NO ALLOWABLE WILL BE ASSIGNED TO THIS COMPLETION UNTIL ALL INTERESTS HAVE BEEN CONSOLIDATED OR A NON-STANDARD UNIT HAS BEEN APPROVED BY THE DIVISION



OPERATOR CERTIFICATION

I hereby certify the information contained herein is true and complete to the best of my knowledge and belief, and that this organization either owns a working interest or unleased mineral interest in the land including the proposed bottom hole location or has a right to drill this well at this location pursuant to a contract with an owner of such a mineral or working interest, or to a voluntary pooling agreement or a compulsory pooling order heretofore entered by the division.

Celeste G. Dale 06/07/07
Signature Date

Celeste G. Dale
Printed Name

SURVEYOR CERTIFICATION

I hereby certify that the well location shown on this plat was plotted from field notes of actual surveys made by me or under my supervision and that the same is true and correct to the best of my belief

May 18, 2007

Date of Survey LVA
Signature & Seal of Professional Surveyor

W.O. Num. 2007-0553

Certificate No. MACON McDONALD 12185

NOTE:

- 1) Plane Coordinates shown hereon are Transverse Mercator Grid and Conform to the "New Mexico Coordinate System", New Mexico East Zone, North American Datum of 1927. Distances shown hereon are mean horizontal surface values.

1" = 2000'

DISTRICT I
1625 N. French Dr., Hobbs, NM 88240

DISTRICT II
1301 W. Grand Avenue, Artesia, NM 88210

DISTRICT III
1000 Rio Brazos Rd., Aztec, NM 87410

DISTRICT IV
1220 S. St. Francis Dr., Santa Fe, NM 87505

State of New Mexico
Energy, Minerals & Natural Resources Department
OIL CONSERVATION DIVISION
1220 South St. Frances Dr.
Santa Fe, NM 87505

Form C-102
Revised October 12, 2005
Submit to Appropriate District Office
State Lease - 4 Copies
Fee Lease - 3 Copies

☐ AMENDED REPORT

WELL LOCATION AND ACREAGE DEDICATION PLAT

API Number 30-025-38431	Pool Code 29760	Pool Name Hardy; Tubb-Drinkard
Property Code 31471	Property Name STATE F-1	Well Number 19
OGRD No. 217817	Operator Name CONOCO PHILLIPS COMPANY	Elevation 3496'

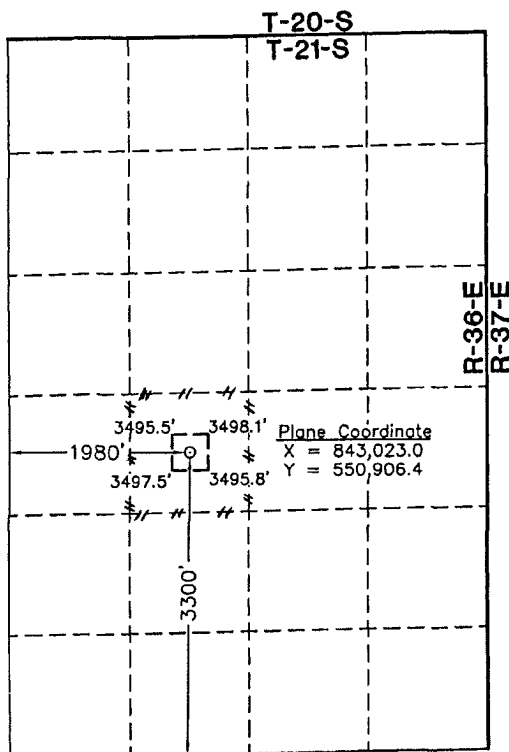
Surface Location

UL or lot No. 14	Section 1	Township 21 S	Range 36 E	Lot Idn	Feet from the 3300	North/South line SOUTH	Feet from the 1980	East/West line WEST	County LEA
---------------------	--------------	------------------	---------------	---------	-----------------------	---------------------------	-----------------------	------------------------	---------------

Bottom Hole Location If Different From Surface

UL or lot No.	Section	Township	Range	Lot Idn	Feet from the	North/South line	Feet from the	East/West line	County
Dedicated Acres 40	Joint or Infill	Consolidation Code	Order No.						

NO ALLOWABLE WILL BE ASSIGNED TO THIS COMPLETION UNTIL ALL INTERESTS HAVE BEEN CONSOLIDATED OR A NON-STANDARD UNIT HAS BEEN APPROVED BY THE DIVISION



Plane Coordinate
X = 843,023.0
Y = 550,906.4

OPERATOR CERTIFICATION

I hereby certify the information contained herein is true and complete to the best of my knowledge and belief, and that this organization either owns a working interest or leased mineral interest in the land including the proposed bottom hole location or has a right to drill this well at this location pursuant to a contract with an owner of such a mineral or working interest, or to a voluntary pooling agreement or a compulsory pooling order heretofore entered by the division.

Celeste G. Dale 06/07/07
Signature Date
Celeste G. Dale
Printed Name

SURVEYOR CERTIFICATION

I hereby certify that the well location shown on this plat was plotted from field notes of actual surveys made by me or under my supervision and that the same is true and correct to the best of my belief

May 18, 2007

Date of Survey LVA
Signature & Seal of Professional Surveyor

W.O. Num. 2007-0553

Certificate No. MACON McDONALD 12185

NOTE:

- 1) Plane Coordinates shown hereon are Transverse Mercator Grid and Conform to the "New Mexico Coordinate System", New Mexico East Zone, North American Datum of 1927. Distances shown hereon are mean horizontal surface values.

1" = 2000'