

Submit 3 Copies To Appropriate District
Office
District I
1625 N. French Dr., Hobbs, NM 87401
District II
1301 W Grand Ave., Artesia, NM 88210
District III
1000 Rio Brazos Rd., Aztec, NM 87410
District IV
1220 S. St. Francis Dr., Santa Fe, NM 87505

State of New Mexico
Energy, Minerals and Natural Resources

Form C-103
June 19, 2008

RECEIVED

APR 06 2009

HOBBSD

OIL CONSERVATION DIVISION

1220 South St. Francis Dr.
Santa Fe, NM 87505

WELL API NO. 30-025-36083 /
5. Indicate Type of Lease STATE <input checked="" type="checkbox"/> FEE <input type="checkbox"/>
6. State Oil & Gas Lease No. 30950
7. Lease Name or Unit Agreement Name: Amerada State /
8. Well Number 1 /
9. OGRID Number 162928
10. Pool name or Wildcat Saunders, San Andres
11. Elevation (Show whether DR, RKB, RT, GR, etc.) 4212' GL

SUNDRY NOTICES AND REPORTS ON WELLS
(DO NOT USE THIS FORM FOR PROPOSALS TO DRILL OR TO DEEPEN OR PLUG BACK TO A DIFFERENT RESERVOIR. USE "APPLICATION FOR PERMIT" (FORM C-101) FOR SUCH PROPOSALS.)

1. Type of Well: Oil Well <input checked="" type="checkbox"/> Gas Well <input type="checkbox"/> Other <input type="checkbox"/>	2. Name of Operator Energen Resources Corporation /
3. Address of Operator 3300 N. "A" St., Bldg 4, Ste. 100, Midland, TX 79705	4. Well Location Unit Letter <u>M</u> : <u>990</u> feet from the <u>South</u> line and <u>330</u> feet from the <u>West</u> line Section <u>4</u> Township <u>15-S</u> Range <u>33-E</u> NMPM County <u>Lea</u>
11. Elevation (Show whether DR, RKB, RT, GR, etc.) 4212' GL	

12. Check Appropriate Box to Indicate Nature of Notice, Report, or Other Data

NOTICE OF INTENTION TO:

PERFORM REMEDIAL WORK ☐ PLUG AND ABANDON ☒
TEMPORARILY ABANDON ☐ CHANGE PLANS ☐
PULL OR ALTER CASING ☐ MULTIPLE COMPL ☐
DOWNHOLE COMMINGLE ☐

OTHER: ☐

SUBSEQUENT REPORT OF:

REMEDIAL WORK ☐ ALTERING CASING ☐
COMMENCE DRILLING OPNS. ☐ P AND A ☐
CASING/CEMENT JOB ☐

OTHER: ☐

13. Describe proposed or completed operations. (Clearly state all pertinent details, and give pertinent dates, including estimated date of starting any proposed work). SEE RULE 1103. For Multiple Completions: Attach wellbore diagram of proposed completion or recompletion.

See attached procedure

* SEE CHANGES

The Oil Conservation Division **Must be notified**
24 hours prior to the beginning of plugging operations

Spud Date:

01-03-03

Rig Release Date:

I hereby certify that the information above is true and complete to the best of my knowledge and belief.

SIGNATURE Tracie J Cherry TITLE Regulatory Analyst DATE 03-30-09
Type or print name Tracie J Cherry E-mail address: tracie.cherry@energen.com PHONE 432 684-3692

For State Use Only

APPROVED BY Mark White TITLE Comp. Off. DATE 4/8/09
Conditions of Approval (if any):

ENERGEN RESOURCES CORPORATION

Amerada State #1
990' FSL and 330' FWL
Sec 4, T-15-S, R-33-E
Lea, Co. NM
Saunders San Andres Field
P&A well

Date: March 25, 2009

AFE No: PB031009

Cost: \$40,000

WI: 100.00%

NRI: 0%

See Well Bore Diagram

Plugging Procedure

1. MIRU Pulling Unit
2. Install BOPE.
3. RIH w/tubing. Tag plug @ 4710. Spot ²⁵ 5 sx cement on top of plug. PU Circulate hole w/9 #/gal plugging mud to 3100'..
→ SPOT 25 sx cmt @ 4068' (DVT tool)
4. Perforate casing at ~~3140'~~ ^{2600'} w/4 squeeze holes.
5. RIH w/pkr and set at 3040'.
6. Squeeze the ^{25 sx} cement through perfs at ~~3140'~~ ^{2600'} back up to 3040'. POOH w/pkr.
7. RIH w/tbg. Tag cement plug. Circulate 9 #/gal plugging mud to 1150'.
Perf @ 1500'
8. ~~Set cement plug from 1250 to 1150'.~~
SQZ w/ 25 sx cmt
9. Tag cement plug. Circulate 9 #/gal plugging mud to 250.
@ ~~1450'~~
10. Perforate casing at 486' w/4 squeeze holes.
11. RIH w/pkr and set at 250'.
12. Squeeze ~~the~~ cement through perfs at 486' back up to surface. Call office & NMOCD for instructions if well will not circulate. POOH w/pkr. WOC \$ TAG @ 386'
→ SPOT CMT PLUG FROM 60' TO SURFACE.
13. Cut off wellhead 3' from surface and well on P&A marker.
14. RD pulling unit.

ENERGEN RESOURCES CORPORATION

Amerada State #1

Lea County, NM

Conductor:

None

Surface Casing:

8-5/8" 24#, J-55 @ 436'

Hole Size: 11"

Cemented to surface

With 500 sx Class "C" + Additives

Circulated

'Current Conditions:

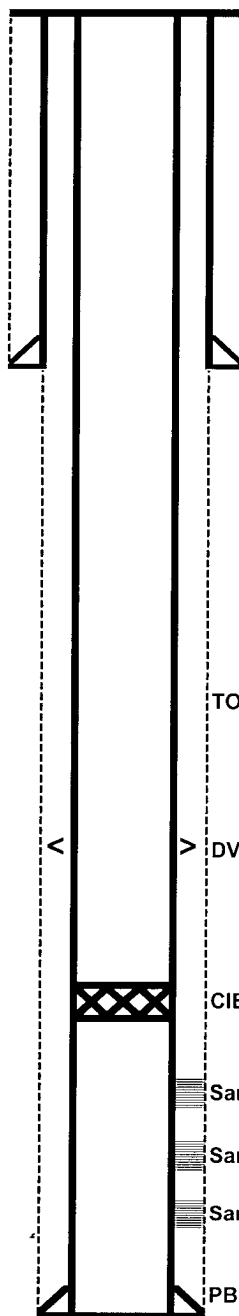
GL Elevation: 4212'

KB Elevation: 4218', 6' AGL

Location: 990' FSL & 330' FWL,
Section 4, T-15-S, R-33-E, Lea County, NM

API #30-025-36083

436'



TOC of 3,336'

< DV Tool @ 4018'

CIBP @ 4710' (1/13/2006)

San Andres Perfs: 4760-4888' 3 JSPF (2/3/2003)

San Andres Perfs: 4864-4918' 3 JSPF (1/29/2003)

San Andres Perfs: 4974-4979' 3 JSPF (1/27/2003)

PBD: 5094'

TD: 5141'

Production Casing:

5-1/2" 15.5# J-55 ST&C @ 5141'

in 7-7/8" hole w/DV tool @ 4018'

'Cmt 1st stage w/350 sx Class "C" + adds

2nd stage failed

ENERGEN RESOURCES CORPORATION

Amerada State #1

Lea County, NM

Conductor:

None

Surface Casing:

8-5/8" 24#, J-55 @ 436'

Hole Size: 11"

Cemented to surface

With 500 sx Class "C" + Additives

Circulated

P&A Proposal

GL Elevation: 4212'

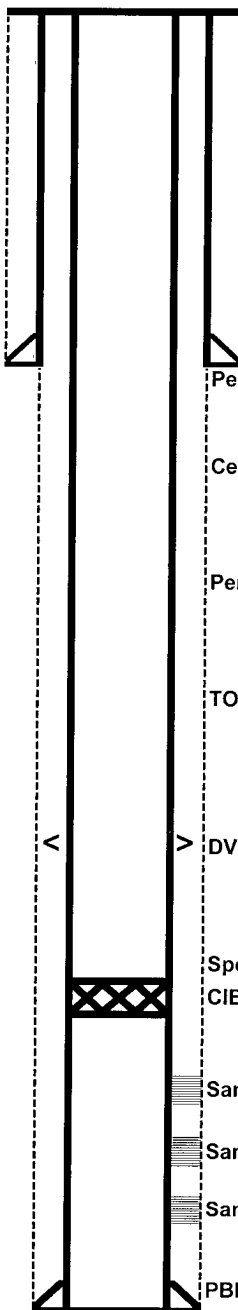
KB Elevation: 4218', 6' AGL

Location: 990' FSL & 330' FWL,

Section 4, T-15-S, R-33-E, Lea County, NM

API #30-025-36083

436'



Perf/Sqz @ 486', Circulate Cement

Cement Plug 1150' - 1250'

Perf/Sqz @ 3140'

TOC of 3,336'

< DV Tool @ 4018' >

Spot 5 sx on CIBP

CIBP @ 4710' (1/13/2006)

San Andres Perfs: 4760-4888' 3 JSPF (2/3/2003)

San Andres Perfs: 4864-4918' 3 JSPF (1/29/2003)

San Andres Perfs: 4974-4979' 3 JSPF (1/27/2003)

PBD: 5094'

TD: 5141'

Production Casing:

5-1/2" 15.5# J-55 ST&C @ 5141'

in 7-7/8" hole w/DV tool @ 4018'

'Cmt 1st stage w/350 sx Class "C" + adds

2nd stage failed