

DISTRICT I
1625 N. French Dr., Hobbs, NM 88240

DISTRICT II
1301 W. Grand Ave., Artesia, NM 88210

DISTRICT III
1000 Rio Brazos Rd., Aztec, NM 87410

DISTRICT IV
1220 St. Francis Dr., Santa Fe, NM 87505

State of New Mexico
Energy, Minerals and Natural Resources Department

OIL CONSERVATION DIVISION
1220 South St. Francis Drive
Santa Fe, NM 87505

Form C-1021
Revised October 12, 2005

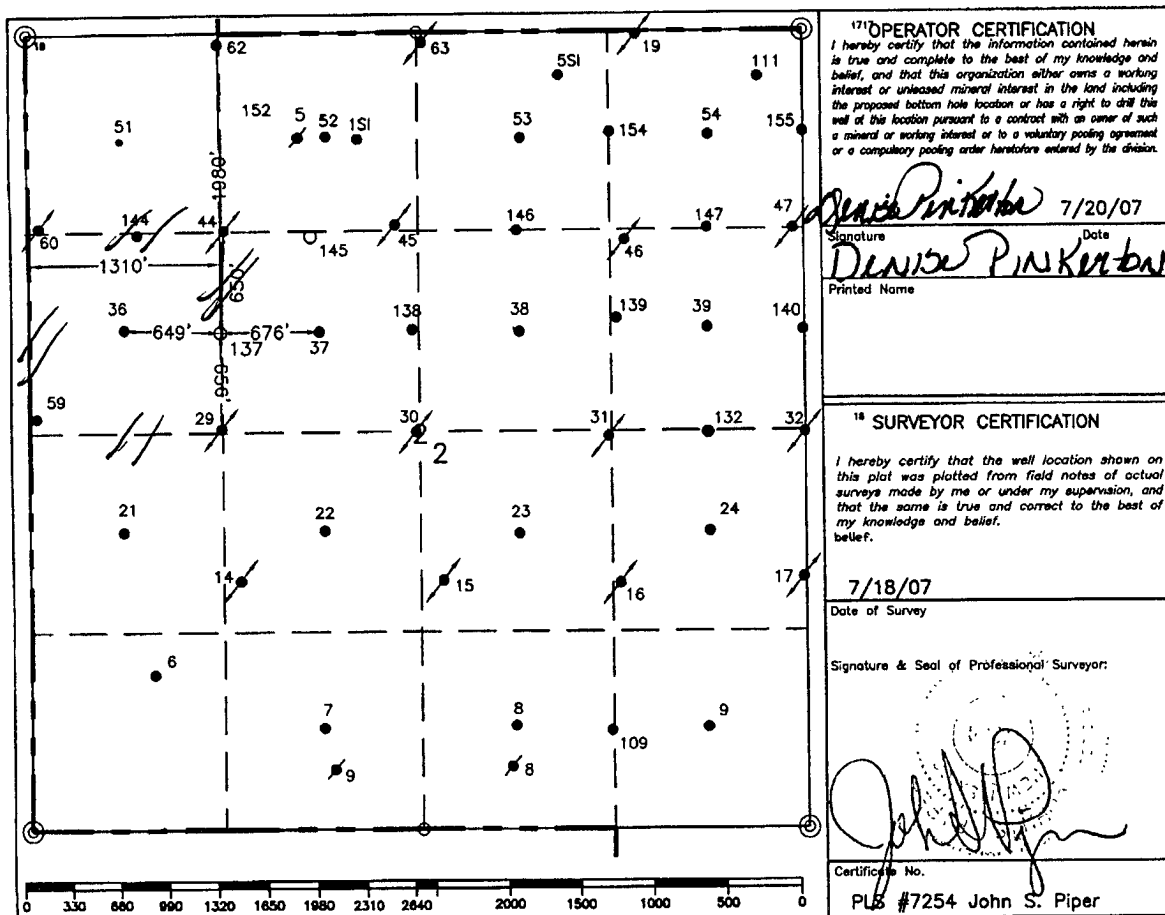
Submit to Appropriate District Office
State Lease-4 copies
Fee Lease-3 copies

☐ AMENDED REPORT

WELL LOCATION AND ACREAGE DEDICATION PLAT

1 API Number		2 Pool Code		3 Pool Name	
		62180		Vacuum Grayburg San Andres	
4 Property Code		5 Property Name			6 Well Number
		VACUUM GRAYBURG SAN ANDRES UNIT			137
7 OGRID No.		8 Operator Name			9 Elevation
4323		CHEVRON USA, INC.			4018'
10 Surface Location					
UL or lot no.	Section	Township	Range	Lot Idn	Feet from the North/South line
E	2	18-S	34-E		1980'
				Feet from the East/West line	County
				1310'	Lea
11 Bottom Hole Location If Different From Surface					
UL or lot no.	Section	Township	Range	Lot Idn	Feet from the North/South line
12 Dedicated Acres				13 Joint or Infill	14 Consolidation Code
10-40					15 Order No.

NO ALLOWABLE WILL BE ASSIGNED TO THIS COMPLETION UNTIL ALL INTERESTS HAVE BEEN CONSOLIDATED
OR A NON-STANDARD UNIT HAS BEEN APPROVED BY THE DIVISION.



○ = Staked Location • = Producing Well ● = Injection Well ◇ = Water Supply Well ◆ = Plugged & Abandon Well
⊙ = Found Section Corner, 2 or 3" Iron Pipe & GLO B.C. ○ = Found 1/4 Section Corner, 1" Iron Pipe & GLO B.C.

ADDITIONAL INFORMATION ON THE LOCATION

State Plane Coordinates			
Northing 647951.90		Easting 786551.44	
Latitude 32°46'43.363"		Longitude 103°32'07.743"	
Zone	North American Datum	Combined Grid Factor	Coordinate File
East	1983	0.99998141	Buckeye.crd
Drawing File		Field Book	
VGSAU137.Dwg			