

REFERENCE SHEET FOR  
UNDESIGNATED WELLS

	Fm	Pm	N	Pc
17-21 E	XX	XX		XX

paragraph

1. Date:	2/17/2009
2. Type of Well:	
Oil:	XX
Gas:	
3. County:	LEA

4. Operator	CONOCOPHILLIPS CO			API NUMBER	30 - 025 - 38914
5. Address of Operator	3300 N A ST BLDG 6 MIDLAND TX 79705				
6. Lease name or Unit Agreement Name	STATE F-1			7. Well Number	# - 25
8. Well Location	Unit Letter: E 1934 feet from the N line and 335 feet from the W line Section 1 Township 21S Range 36E				
9. Completion Date	12/12/2008	11. Perfs	Top	Bottom	TD
			6394	6608	7170
10. Name of Producing Formation(s)	TUBB-DRINKARD	12. Open Hole Casing shoe	Bottom		PBTD
					7160
13. C-123 Filed	Date	15. Name of Pool Requested or temporary Wildcat designation	Pool ID num		
Y	N XX	HARDY;TUBB-DRINKARD	29760		
16. Remarks	EXTEND				

TO BE COMPLETED BY DISTRICT GEOLOGIST		
17. Action taken	18. Pool Name	Pool ID num
EXTEND	HARDY;TUBB-DRINKARD	29760
T 21 S, R 36 E		
SEC 1: Lots 1 THROUGH 16		

19. Advertised for HEARING	20. Case Number
21. Name of pool for which was advertised	Pool ID num
HARDY;TUBB-DRINKARD	29760
22. Placed in Pool	23. By order number
	R-

DISTRICT I  
1625 N. French Dr., Hobbs, NM 88240

DISTRICT II  
1301 W. Grand Avenue, Artesia, NM 88210

DISTRICT III  
1000 Rio Brazos Rd., Aztec, NM 87410

DISTRICT IV  
1220 S. St. Francis Dr., Santa Fe, NM 87505

State of New Mexico  
Energy, Minerals & Natural Resources Department  
OIL CONSERVATION DIVISION  
1220 South St. Frances Dr.  
Santa Fe, NM 87505

Form C-102  
Revised October 12, 2005  
Submit to appropriate District Office  
State Lease - 4 Copies  
Fee Lease - 3 Copies

RECEIVED  
HOBBS  
JUN 18 2008

AMENDED REPORT

WELL LOCATION AND ACREAGE DEDICATION PLAT

API Number 30-025-38914	Pool Code 29760	Pool Name Hardy; Tubb-Drinkard
Property Code 31471	Property Name STATE F-1	Well Number 25
OGRID No. 217817	Operator Name CONOCOPHILLIPS COMPANY	Elevation 3505'

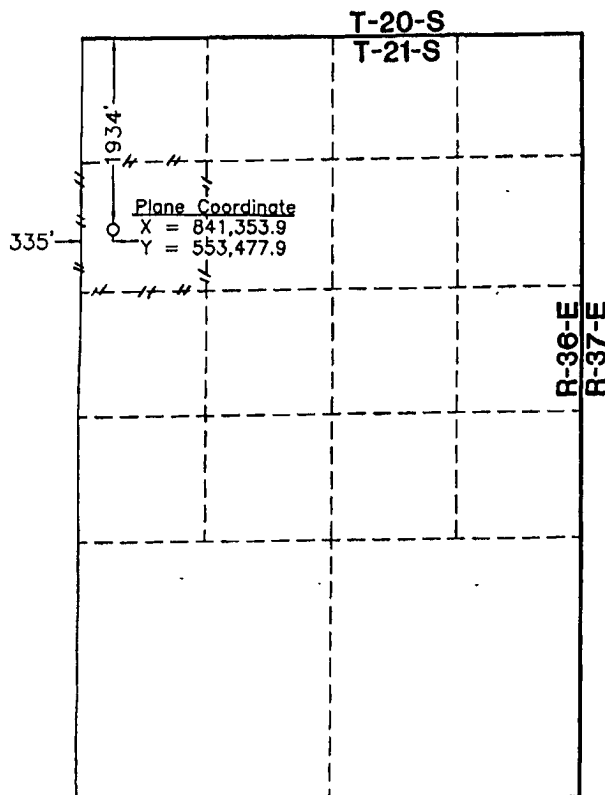
Surface Location

UL or lot No.	Section	Township	Range	Lot Idn	Feet from the	North/South line	Feet from the	East/West line	County
5	1	21 S	36 E		1934	NORTH	335	WEST	LEA

Bottom Hole Location If Different From Surface

UL or lot No.	Section	Township	Range	Lot Idn	Feet from the	North/South line	Feet from the	East/West line	County
Dedicated Acres 40	Joint or Infill	Consolidation Code	Order No.						

NO ALLOWABLE WILL BE ASSIGNED TO THIS COMPLETION UNTIL ALL INTERESTS HAVE BEEN CONSOLIDATED OR A NON-STANDARD UNIT HAS BEEN APPROVED BY THE DIVISION



NOTE:

- 1) Plane Coordinates shown hereon are Transverse Mercator Grid and Conform to the "New Mexico Coordinate System", New Mexico East Zone, North American Datum of 1927. Distances shown hereon are mean horizontal surface values.

1" = 2000'

OPERATOR CERTIFICATION

I hereby certify the information contained herein is true and complete to the best of my knowledge and belief, and that this organization either owns a working interest or unleased mineral interest in the land including the proposed bottom hole location or has a right to drill this well at this location pursuant to a contract with an owner of such a mineral or working interest, or to a voluntary pooling agreement or a compulsory pooling order heretofore entered by the division.

*Celeste G. Dale* 07/16/08  
Signature Date

Celeste G. Dale  
Printed Name

SURVEYOR CERTIFICATION

I hereby certify that the well location shown on this plat was plotted from field notes of actual surveys made by me or under my supervision and that the same is true and correct to the best of my belief

June 18, 2008

Date of Survey  
Signature & Seal of Professional Surveyor

*[Signature]*  
12135

W.O. Num. 2008-0131

Certificate No. MACON McDONALD 12185