

DISTRICT I  
P.O. Box 1980, Hobbs, NM 88241-1980

DISTRICT II  
P.O. Box Drawer DD, Artesia, NM 88211-0719

DISTRICT III  
1000 Rio Brazos Rd., Aztec, NM 87410

DISTRICT IV  
P.O. Box 2088, Santa Fe, NM 87504-2088

**State of New Mexico**  
**Energy, Minerals and Natural Resources Department**

**OIL CONSERVATION DIVISION**

P.O. Box 2088  
Santa Fe, New Mexico 87504-2088

Form C-101

Revised February 10, 1999

Instructions on back  
Submit to Appropriate District Office  
State Lease - 6 Copie  
Fee Lease - 5 Copie

☐ AMENDED REPORT

**APPLICATION FOR PERMIT TO DRILL, RE-ENTER, DEEPEN, PLUGBACK, OR ADD A ZONE**

<sup>1</sup> Operator Name and Address CHEVRON USA INC 15 SMITH ROAD, MIDLAND, TX 79705		<sup>2</sup> OGRID Number 4323
		<sup>3</sup> API Number 30-025-35119
<sup>4</sup> Property Code 29954	<sup>5</sup> Property Name J R PHILLIPS	<sup>6</sup> Well No. 15

<sup>7</sup> Surface Location									
Ul or lot no.	Section	Township	Range	Lot.Idn	Feet From The	North/South Line	Feet From The	East/West Line	County
C	6	20-S	37-E		660	NORTH	1865	WEST	LEA

<sup>8</sup> Proposed Bottom Hole Location If Different From Surface									
Ul or lot no.	Section	Township	Range	Lot.Idn	Feet From The	North/South Line	Feet From The	East/West Line	County
<sup>9</sup> Proposed Pool 1 WEST MONUMENT TUBB (GAS)					<sup>10</sup> Proposed Pool 2				

<sup>11</sup> Work Type Code P	<sup>12</sup> WellType Code G	<sup>13</sup> Rotary or C.T. ROTARY	<sup>14</sup> Lease Type Code P	<sup>15</sup> Ground Level Elevation 3565'
<sup>16</sup> Multiple No	<sup>17</sup> Proposed Depth 7750'	<sup>18</sup> Formation TUBB	<sup>19</sup> Contractor	<sup>20</sup> Spud Date 12/15/103

<sup>21</sup> Proposed Casing and Cement Program

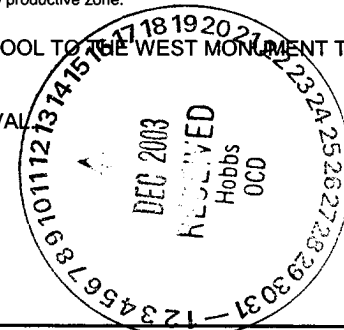
SIZE OF HOLE	SIZE OF CASING	WEIGHT PER FOOT	SETTING DEPTH	SACKS OF CEMENT	EST. TOP
12 1/4"	8 5/8"	24#	1132'	800 SX CL C CMT	
7 7/8"	5 1/2"	17#	7058'	1585 SX	

<sup>22</sup> Describe the proposed program. If this application is to DEEPEN or PLUG BACK give the data on the present productive zone and proposed new productive zone. Describe the blowout prevention program, if any. Use additional sheets if necessary.

CHEVRON U.S.A. INC. INTENDS TO RECOMPLETE THE SUBJECT WELL FROM THE MONUMENT ABO POOL TO THE WEST MONUMENT TUBB (GAS) POOL.

THE INTENDED PROCEDURE AND CURRENT WELLBORE DIAGRAM IS ATTACHED FOR YOUR APPROVAL

Permit Expires 1 Year From Approval  
Date Unless Drilling Underway  
Plugback



<sup>23</sup> I hereby certify that the rules and regulations of the Oil Conservation Division have been complied with and that the information given above is true and complete to the best of my knowledge and belief.		<b>OIL CONSERVATION DIVISION</b>	
Signature <i>Denise Leake</i>		Approved By: <i>Paul J. Hobbs</i>	
Printed Name Denise Leake		Title: PETROLEUM ENGINEER	
Title Regulatory Specialist		Approval Date: DEC 15 2003	
Date 12/10/2003		Expiration Date:	
Telephone 915-687-7375		Conditions of Approval: Attached <input type="checkbox"/>	

**Workover Procedure for  
J. R. Phillips #15  
Lea County, New Mexico**

**API NO:** 30-025-35119

**Well:** J. R. Phillips #15

<b>WBS Number(s):</b>	UWPNM-R3134-EXP	\$94,300
	UWPNM-R3134-CAP	\$5,150

**Well Location:**

**Township:** 20S    **Range:** 37E    **Section:** 6

**Surface Location:** 660' FNL & 1865' FWL, Unit C  
Lea County, New Mexico

**Current Status:**

**Status:** PR

**Production:** 7 bopd / 46 mcfpd / 49 bwpd

**Formation:** Abo

**Objectives**

1. Re-complete the well to the Tubb Pool.
2. Breakdown perforation, stimulate and test Tubb.
3. Turn well over to operations.

**Procedure**

**NOTE: Use 2% KCL water for all operations.**

1. Displace flowline with fresh water and pressure test as follows: fiberglass lines – 300 psig, all polypipe – 100 psig and/or all steel lines – 500 psig. Contact Larry Williams for repair and/or replacement, if necessary.
2. MIRU PU. NDWH. POOH w/ 83 – 1", 83 – 7/8", 119 - 3/4" rods and pump (See Wellbore Diagram). NU BOPe and EPA. Pressure test BOPe.
3. Release TAC and POOH w/ approximately 238 jts. of 2-7/8" TBG (see Wellbore Diagram). Note the presence of solids (e.g., iron sulfate, calcium sulfate scale, dolomite or other substances) on tubing.
4. PU and RIH with 4-3/4" bit and Casing Scraper on a 2-7/8" WS. C/O to 7070'. Note returns for the presence of solids (e.g., iron sulfate, calcium sulfate scale, dolomite or other substances). Circulate hole clean. POOH with 4-3/4" bit and WS. LD BHA.
5. PU and RIH with 5-1/2" CIBP, set @ +/- 7050' or within 100' of top of the Open Hole, and spot 35' of Class 'C' on top of CIBP. PUH and spot 20% HCL from 6450' to 6350' (See Fluid Specifications). POOH with WS.

**Workover Procedure for  
J. R. Phillips #15  
Lea County, New Mexico**

**API NO: 30-025-35119**

6. MIRU Baker Atlas. Run a correlation log and tie into Schlumberger Platform Express: Three Detector Litho-Density Compensated Neutron - GR Log dated September 18<sup>th</sup>, 2000. Perforate with 3-1/8" slick guns loaded with 4 SPF, premium charge, at 120° phasing as follows:

Top Depth	Bottom Depth	Footage	No. Holes
6396	6398	2	8
6414	6418	4	16
6424	6430	6	24
6440	6446	6	24
Total		18	72

7. POOH and Lay down 3-1/8" Perforating Gun. RDMO Baker Atlas.
8. PU and RIH with 5-1/2" Treating PKR with a 2-7/8" mandrel, on/off tool with 1.78" F profile nipple on 2-7/8" tubing, while hydrotesting to 5,000 psi. Set PKR @ +/- 6350' or within 75' of top perforation.
9. MIRU Schlumberger. Perform acid stimulation as follows:

**Acid Treatment:**

Acid stimulate with **2,500 gallons of 20% HCL** at **8-10 BPM** and **4,500 PSI** maximum treating pressure using **110 - 7/8", 1.3 SG. ball sealers** for diversion. See Fluid Specifications.

- Hold pre-job safety meeting. Pressure test lines to 5,000 psi. Pressure annulus to 500 psi. Monitor and record annulus pressure throughout the job.
- If new tubing is used for the work string, tubing should be pickled with 500 gallons of 20% HCL before the acid job.

**Pump job as follows:**

**Stage 1:** Pump 500 gallons of 20% HCL and then start dropping 7/8", 1.3 SG. ball sealers continuously throughout the remainder of the acid job. Overflush with 39 bbls of 2% KCL water. Surge off ball sealers.

Record ISIP, 5, 10 and 15 min. SIP. Wait 2 hrs (at least 1 hr and maximum 3 hrs).

10. RDMO Schlumberger. Send job data files to the following e-mail address:

[JerryPoole@ChevronTexaco.com](mailto:JerryPoole@ChevronTexaco.com)

**Workover Procedure for  
J. R. Phillips #15  
Lea County, New Mexico**

**API NO:** 30-025-35119

11. Swab or Flow back acid load (+/- 100 bbls) into frac tank catching samples from the well for Schlumberger analysis. Record recovered volumes, pressures, and fluid levels. Recover 100% of treatment and load before shutting-in well for the night, if possible. If well flows, set plug in profile, release on/off tool, displace annulus with packer fluid, sting back into on/off tool. ND BOPE. NUWH. RIH and swab FL in tubing until differential across plug is balanced. Retrieve plug & swab well to initiate flow (if needed). RDMO PU. Skip 11 – 15.
12. If well does not flow, release and POOH w/ 5-1/2" Treating PKR and on/off tool.
13. RIH with 2-7/8" tubing to +/- 6425'. RU swab equipment. Record recovered volumes, pressures, and fluid levels. **NOTE:** Swab interval to determine fluid entry rate and oil cut.
14. Contact Jerry Poole for Frac Design if necessary.
15. Contact Felix Trevino for pumping design. RIH w/ Producing Equipment.
16. ND BOPE and EPA. NUWH. RDMO PU.
17. Turn over to Operations. Report daily oil and water volume produced and fluid level until well stabilizes.

**Jerry D. Poole**  
November 11<sup>th</sup>, 2003

**Workover Procedure for  
J. R. Phillips #15  
Lea County, New Mexico**

**API NO: 30-025-35119**

**Fluid Specifications:**

**PPI Acid Breakdown:**

**20% HCL Acid**

1.00 gal/mgal	A264	(Corrosion Inhibitor)
5.00 gal/mgal	L63	(Iron Reducing Agent)
3.00 lbm/mgal	A179	(Corrosion Inhibitor Aid)
2.00 gal/mgal	W53	(Non-emulsifying Agent)
20.00 gal/mgal	U66	(Mutual Solvent)

# WELL DATA SHEET

Field: Monument Abo

Well Name: J.R. Phillips #15

Formation: Abo

Location: 660' FNL & 1865' FWL, Unit C  
Township: 20S  
Range: 37E

Section: 6  
County: Lea  
State: NM

GL:  
KB to GL: 12'  
DF to GL:

Current Status: PR  
API No: 30-025-35119  
REFNO: HA 0557

Date Completed: 10/2000

Initial Formation: Abo

## Initial Completion

10/2000 - Acid Frac w/ 20,000 gal of 20% HCL & 5,000 gal of WF110 at 20 BPM. Ported subs set @ 7500' (5 - 11/32 jets), 7400' (4 - 11/32 jets), 7180' (4 - 11/32 jets), 7150' (4 - 9/32 jets) & 7120' (3 - 9/32 jets).

8-5/8" K-55 csg  
Set @ 1132' w/1144 sx cmt - Circ  
12 1/4" Hole

## Tubing Detail (as of 3/31/2003)

# Jts.	Size	
	KB Correction	12.00
223	JTS. 6.5# L-80 EUE-8-RD TBG	6,995.61
1	5 1/2" TAC 50-K SHEAR 20 PTS 30"	2.90
11	JT 6.5# L-80 EUE-8-RD TBG	345.19
1	JT IPC 6.5# J-55 EUE-8-RD TBG	31.65
1	SEATING NIPPLE NEW 1/7/02	1.10
1	3 1/2" OPMA	29.86
238		7,418.31

## Rod Detail (as of 3/31/2003)

# Rods	Size	
1	1 1/2" X 26' POLISH ROD W/ 13/4" 16' LINER	26.00
3	1" X 2', 8', 4' PONY RODS "D"	12.00
83	1" X 25' STEEL RODS "D"	2075.00
83	7/8" X 25' "D" STEEL RODS	2075.00
119	3/4" X 25' "D" STEEL RODS	2975.00
8	1 1/2" X FLEXBARS	200.00
1	25-150-RHBC-18-4 -7 FIT TM-186 3/31/03 FT	18.00
1	1/4" X 12' GAS ANCHOR PUMP	
298		7381.00

5-1/2" K-55 17# csg  
Set @ 7070'  
1st Stage cmt'd w/ 475 sxs cmt  
2nd Stage cmt'd w/1110 sxs cmt  
TOC @317  
7 7/8" Hole

TAC @7381'

7070' - 7750' 7-7/8" Open Hole

PBTD 7650' w/ sand

TD 7750'

## DISTRICT I

P.O. Box 1980, Hobbs, NM 88241-1980

## DISTRICT II

P.O. Box Drawer DD, Artesia, NM 88211-0719

## DISTRICT III

1000 Rio Brazos Rd., Aztec, NM 87410

## DISTRICT IV

P.O. Box 2088, Santa Fe, NM 87504-2088

## State of New Mexico

## Energy, Minerals and Natural Resources Department

## OIL CONSERVATION DIVISION

P.O. Box 2088

Santa Fe, New Mexico 87504-2088

Form C-102

Revised February 10, 1999

Instructions on back

Submit to Appropriate District Office

State Lease - 4 Copies

Fee Lease - 3 Copies

☐ AMENDED REPORT

## WELL LOCATION AND ACREAGE DEDICATION PLAT

<sup>1</sup> API Number 30-025-35119	<sup>2</sup> Pool Code 96968	<sup>3</sup> Pool Name MONUMENT; TUBB WEST (GAS)
<sup>4</sup> Property Code 29954	<sup>5</sup> Property Name J R PHILLIPS	<sup>6</sup> Well No. 15
<sup>7</sup> OGRID Number 4323	<sup>8</sup> Operator Name CHEVRON USA INC	<sup>9</sup> Elevation 3565'

<sup>10</sup> Surface Location

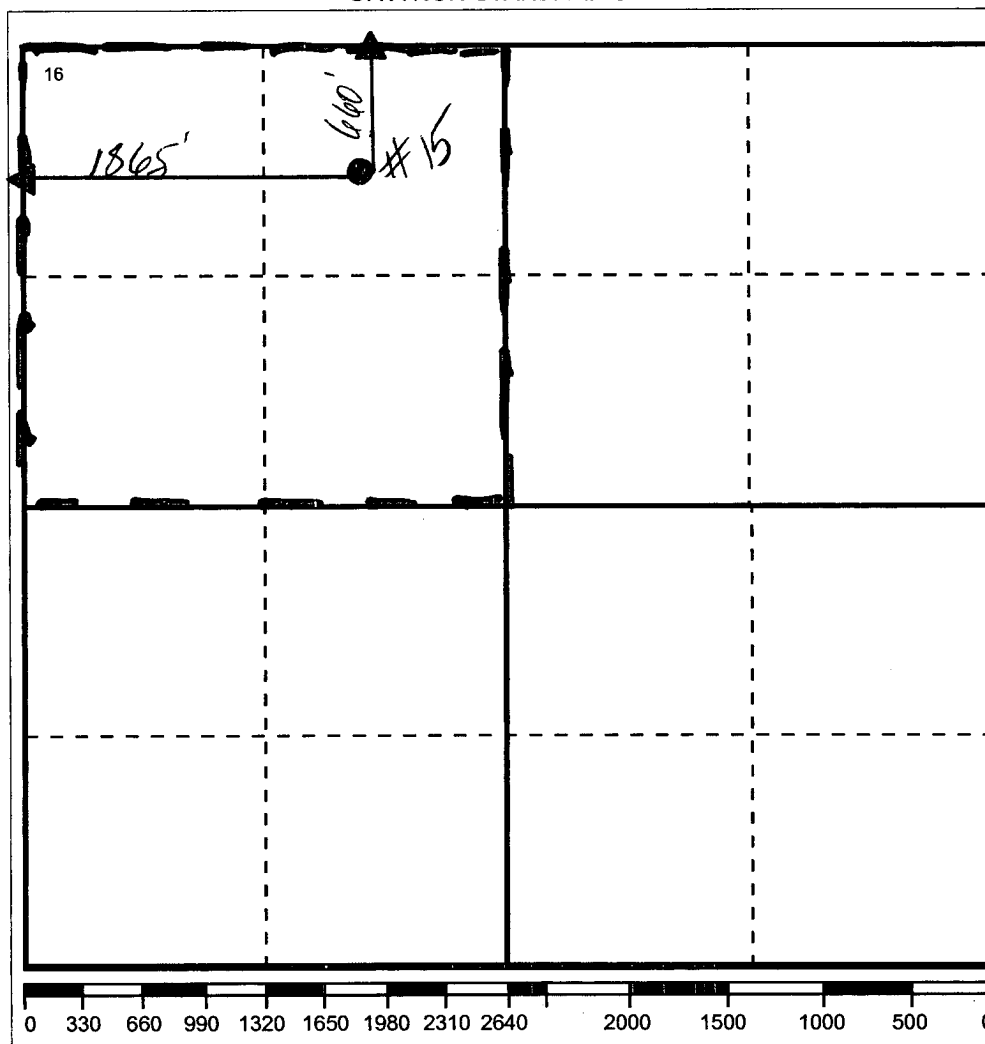
Ul or lot no	Section	Township	Range	Lot.Idn	Feet From The	North/South Line	Feet From The	East/West Line	County
C	6	20-S	37-E		660	NORTH	1865	WEST	LEA

<sup>11</sup> Bottom Hole Location If Different From Surface

Ul or lot no.	Section	Township	Range	Lot.Idn	Feet From The	North/South Line	Feet From The	East/West Line	County

<sup>12</sup> Dedicated Acre 160	<sup>13</sup> Joint or Infill No	<sup>14</sup> Consolidation Code	<sup>15</sup> Order No.
-------------------------------------	-------------------------------------	----------------------------------	-------------------------

NO ALLOWABLE WILL BE ASSIGNED TO THIS COMPLETION UNTIL ALL INTERESTS HAVE BEEN CONSOLIDATED  
OR A NON-STANDARD UNIT HAS BEEN APPROVED BY THE DIVISION

<sup>17</sup> OPERATOR CERTIFICATION

I hereby certify that the information contained herein is true and complete to the best of my knowledge and belief

Signature

Printed Name

Denise Leake

Positio

Regulatory Specialist

Date

12/10/2003

<sup>18</sup> SURVEYOR CERTIFICATION

I hereby certify that the well location shown on this plat was plotted from field notes of actual surveys made by me or under my supervision, and that the same is true and correct to the best of my knowledge and belief.

Date Surveyed

Signature & Seal of  
Professional Surveyor

Certificate No.