

Submit to Appropriate District Office Five Copies District I 1625 N. French Dr., Hobbs, NM 88240 District II 1301 W. Grand Avenue, Artesia, NM 88210 District III 1000 Rio Brazos Rd., Aztec, NM 87410 District IV 1220 S. St. Francis Dr., Santa Fe, NM 87505	State of New Mexico Energy, Minerals and Natural Resources RECEIVED APR 21 2009 OIL CONSERVATION DIVISION 1220 South St. Francis Dr. Santa Fe, NM 87505	Form C-105 July 17, 2008
---	--	-----------------------------

WELL COMPLETION OR RECOMPLETION REPORT AND LOG

4. Reason for filing: <input checked="" type="checkbox"/> COMPLETION REPORT (Fill in boxes #1 through #31 for State and Fee wells only) <input checked="" type="checkbox"/> C-144 CLOSURE ATTACHMENT (Fill in boxes #1 through #9, #15 Date Rig Released and #32 and/or #33, attach this and the plat to the C-144 closure report in accordance with 19.15 17 13.K NMAC)	5. Lease Name or Unit Agreement Name Bridges State
6. Well Number 516	

9. Type of Completion
☒ NEW WELL ☐ WORKOVER ☐ DEEPENING ☐ PLUGBACK ☐ DIFFERENT RESERVOIR ☐ OTHER

8. Name of Operator XTO Energy Inc.	9. OGRID Number 005380
--	---------------------------

10. Address of Operator 200 N Loraine, Ste. 800 Midland, TX 79701	11. Pool name or Wildcat Vacuum; Atoka-Morrow, North (Gas)
--	---

12. Location	Unit Letter	Section	Township	Range	Lot	Feet from the	N/S Line	Feet from the	E/W Line	County
Surface:	P	15	17S	34E		760'	South	660'	East	Lea
BH.										

13. Date Spudded 11-23-08	14. Date T.D. Reached 12-28-08	15. Date Rig Released 12-31-08	16. Date Completed (Ready to Produce) 3-24-09	17. Elevations (DF & RKB, RT, GR, etc.) 4046' GL & 4064' KB
------------------------------	-----------------------------------	-----------------------------------	--	--

18. Total Measured Depth of Well 12,367	19. Plug Back Measured Depth 12,318	20. Was Directional Survey Made Yes	21. Type Electric and Other Logs Run Radial/Bond Log/Gamma Ray
--	--	--	---

22. Producing Interval(s), of this completion - Top, Bottom, Name
12,182' - 12,215' Morrow

23. CASING RECORD (Report all strings set in well)

CASING SIZE	WEIGHT LB./FT.	DEPTH SET	HOLE SIZE	CEMENTING RECORD	AMOUNT PULLED
13 3/8"	48#	440'	17 1/2"	425 sx Lt & Prem Plus	222 sx/Surface
9 5/8"	36# & 40#	4667'	12 1/4"	1700sx ExtendacemC/HalcemC	473 sx/Surface
5 1/2"	17#	12,367'	8 3/4"	1860sx EconoCem HLH/Halcem	52 sx/Surface
					TOC @ 5,314'

24. LINER RECORD				25. TUBING RECORD			
SIZE	TOP	BOTTOM	SACKS CEMENT	SCREEN	SIZE	DEPTH SET	PACKER SET
					2 7/8"	12,110	12,100

26. Perforation record (interval, size, and number) 12,182' - 12,187' (5', 10 holes) w/2 spf 12,194' - 12,202' (8', 16 holes) 12,207' - 12,215' (8', 16 holes)	27. ACID, SHOT, FRACTURE, CEMENT, SQUEEZE, ETC. DEPTH INTERVAL 12,182' - 12,187' 12,194' - 12,202' 12,207' - 12,215' AMOUNT AND KIND MATERIAL USED Frac w/2000gls 7-1/2% Clay-Safe acid ahead of 60,000gls 65Q Foam & 60,000# 20/40 Sintered Bauxite Sd
---	---

28. PRODUCTION Flush w/282 bbs 35# Water Frac CMHPG

Date First Production 3/25/09	Production Method (Flowing, gas lift, pumping - Size and type pump) Flowing	Well Status (Prod or Shut-in) Producing
----------------------------------	--	--

Date of Test 3/29/09	Hours Tested 24 Hrs.	Choke Size	Prod'n For Test Period	Oil - Bbl. 25	Gas - MCF 408	Water - Bbl. 0	Gas - Oil Ratio 1632/1
-------------------------	-------------------------	------------	------------------------	------------------	------------------	-------------------	---------------------------

Flow Tubing Press.	Casing Pressure	Calculated 24-Hour Rate	Oil - Bbl.	Gas - MCF	Water - Bbl.	Oil Gravity - API -(Corr.) 53.1
--------------------	-----------------	-------------------------	------------	-----------	--------------	------------------------------------

29. Disposition of Gas (Sold, used for fuel, vented, etc.) Sold	30. Test Witnessed By
--	-----------------------

31. List Attachments
Logs, Directional Survey, Wellbore Schematic. C104, C102

32. If a temporary pit was used at the well, attach a plat with the location of the temporary pit.
Already Mailed

33. If an on-site burial was used at the well, report the exact location of the on-site burial:
Latitude Longitude NAD: 1927 1983

I hereby certify that the information shown on both sides of this form is true and complete to the best of my knowledge and belief

Signature Kristy Ward	Printed Name Kristy Ward	Title Regulatory Analyst	Date 04/17/09
--------------------------	-----------------------------	-----------------------------	------------------

E-mail address
kristy.ward@xtoenergy.com

INSTRUCTIONS

This form is to be filed with the appropriate District Office of the Division not later than 20 days after the completion of any newly-drilled or deepened well and not later than 60 days after completion of closure. When submitted as a completion report, this shall be accompanied by one copy of all electrical and radio-activity logs run on the well and a summary of all special tests conducted, including drill stem tests. All depths reported shall be measured depths. In the case of directionally drilled wells, true vertical depths shall also be reported. For multiple completions, items 11, 12 and 26-31 shall be reported for each zone.

INDICATE FORMATION TOPS IN CONFORMANCE WITH GEOGRAPHICAL SECTION OF STATE

Southeastern New Mexico			Northeastern New Mexico	
T. Anhy	1618	T. Canyon	T. Ojo Alamo	T. Penn. "B"
T. Salt		T. Strawn	11479	T. Kirtland-Fruitland
B. Salt		T. Atoka	11643	T. Pictured Cliffs
T. Yates	2916	T. Miss	12236	T. Cliff House
T. 7 Rivers		T. Devonian		T. Leadville
T. 7 Rivers		T. Devonian		T. Menefee
T. Queen	3886	T. Silurian		T. Point Lookout
T. Grayburg		T. Montoya		T. Elbert
T. San Andres	4610	T. Simpson		T. Mancos
T. Glorieta	6063	T. McKee		T. Gallup
T. Paddock		T. Ellenburger		T. Ignacio Otzte
T. Blinabry		T. Gr. Wash		T. Granite
T. Tubb	7422	T. Delaware Sand		T. Dakota
T. Drinkard		T. Bone Springs		T. Morrison
T. Abo	8153	T.		T. Todilto
T. Wolfcamp	9534			T. Entrada
T. Penn				T. Wingate
T. Cisco (Bough C)				T. Chinle
				T. Permain
				T. Penn "A"

OIL OR GAS SANDS OR ZONES

No. 1, from _____ to _____ No. 3, from _____ to _____
No. 2, from _____ to _____ No. 4, from _____ to _____

IMPORTANT WATER SANDS

Include data on rate of water inflow and elevation to which water rose in hole.

No. 1, from _____ to _____ feet _____

No. 2, from _____ to _____ feet _____

No. 3, from _____ to _____ feet _____

LITHOLOGY RECORD (Attach additional sheet if necessary)

From	To	Thickness in Feet	Lithology

From	To	Thickness in Feet	Lithology

**McVAY DRILLING COMPANY**

P.O. Box 2450
Hobbs, New Mexico 88241
(575) 397-3311
FAX: 39-DRILL

Well Name and Num: Bridges State #516
Location: Sec 15, T17S, R34E
Operator: XTO Energy
Drilling Contractor: McVay Drilling Company

30-025-39221

15-175-34E

760 FSL & 660 FEL

JAN 08 2009
RECD MIDLAND

The undersigned certifies that he is an authorized representative of the drilling contractor who drilled the above described well and that he has conducted deviation tests and obtained the following results:

<u>Degrees @</u>	<u>Depth</u>	<u>Degrees @</u>	<u>Depth</u>
0.25	206	0.62	6993
0.50	420	0.81	7458
0.50	897	0.62	7962
0.25	1404	0.85	8428
0.25	1903	1.25	8864
0.50	2376	0.50	9203
1.25	2909	0.50	9775
0.50	3408	0.75	10242
0.75	3905	0.86	10742
0.50	4410	0.75	11066
0.75	4627	4.50	11639
0.50	5145	5.25	11760
0.41	5647	6.00	11885
0.44	6150	5.75	12010
0.39	6640	4.50	12317

Drilling Contractor: McVay Drilling Company

By: [Signature]

Subscribed and sworn to before me this 6th day of January, 2009

[Signature]
Notary Public

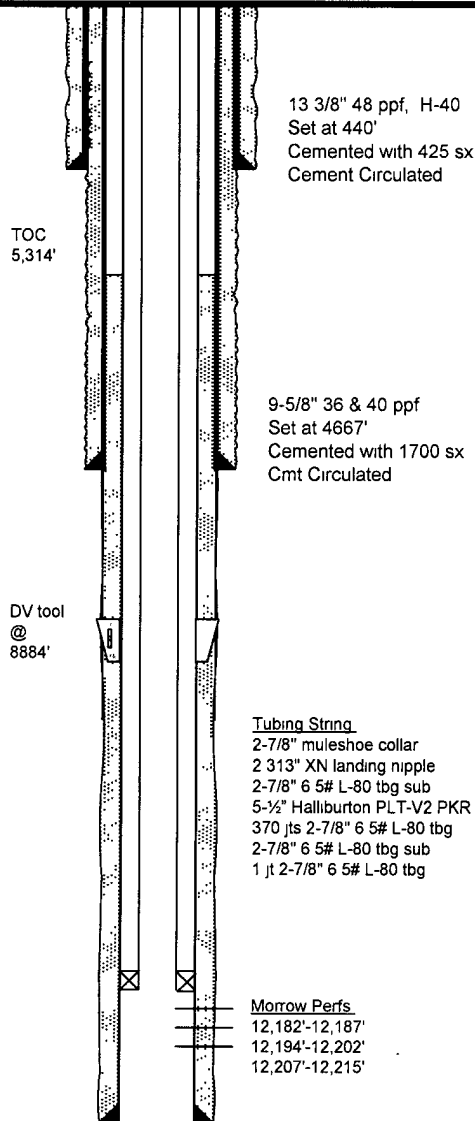
My Commission Expires: 8-16-09 Lea County, New Mexico

[Signature]

XTO ENERGY

Well: Bridges State #516
Area: Buckeye
Location: Section 15, T17S, R34E
County: Lea
Elevation: 4046 GL

WI: 100%
NRI: 87.5%
Spud: 11/23/08
State: New Mexico



PBTD: 12,318'
TD: 12,367'

5-1/2", 17# P-110 LT&C Csg
Set at 12,367'
DV Tool @ 8884'
1st Stage - 900 sx Bumped plug, Circulated 52 sx after opening DV tool
2nd Stage - 960 sx - bumped plug, did not circulate

Bridges State #516

Drilling:

11/23/08. Spud

11/24/08: Set 13-3/8" 48 PPF H-40 surface csg at 440' Circulated cement w/425 sxs.

12/1/08 Set 9-5/8" Intermediate csg at 4,667'. Circulated cement w/ 1,700 sxs

12/31/08 Set 5-1/2" Production csg at 12,367' Cemented w/1,860 sxs TOC at 5,314' by CBL.

Completion:

3/6/09: Perf'd the Morrow 12,182'-12,187' (5', 10 holes), 12,194'-12,202' (8', 16 holes), 12,207'-12,215' (8', 16 holes)

3/10/09 Frac'd the Morrow from 12,182' - 12,215' w/2,000 gal "Clay-Safe" 7.5% acid ahead of 60,000 gal 65 Q Foam & 60,000 lbs 20/40 Sintered Bauxite sand AIR-41 BPM at 7,665 psi. Max TP-8,404 psi SIP-5,905 psi. 5 min-5,759 psi 10 min-5,669 psi. 15 min-5,598 psi

3/17/09 RIH w/ wireline set 5-1/2" 17# PLT-V2 PKR w/ 2 313" profile nipple at 12,100' RIH w/ on/off tool & 290 jts 2-7/8" L-80 production tbg Latched on to PKR. ND BOP & NU WH PWOP

4/1/09 24 hr IP 22 BO, 0 BW, 428 MCF FTP-2,750 psi. Flowing on 3/64" choke.