

Office

Energy, Minerals and Natural Resources

June 19, 2008

District I

1625 N French Dr., Hobbs, NM 88240

District II

1301 W Grand Ave., Artesia, NM 88210

District III

1000 Rio Brazos Rd., Aztec, NM 87400

District IV

1220 S St. Francis Dr., Santa Fe, NM 87505

RECEIVED**MAY 05 2009****HOBBSOCD**

OIL CONSERVATION DIVISION

1220 South St. Francis Dr.

Santa Fe, NM 87505

WELL API NO. ✓

30-025-35702

5. Indicate Type of Lease

STATE ☒ FEE ☐

6. State Oil & Gas Lease No.

M-15635

7. Lease Name or Unit Agreement Name

KTS BRINE FACILITY BW-013 ✓

8. Well Number 001 ✓

9. OGRID Number

21566 ✓

10. Pool name or Wildcat

SALADO

BSWj

SUNDRY NOTICES AND REPORTS ON WELLS

(DO NOT USE THIS FORM FOR PROPOSALS TO DRILL OR TO DEEPEN OR PLUG BACK TO A DIFFERENT RESERVOIR. USE "APPLICATION FOR PERMIT" (FORM C-101) FOR SUCH PROPOSALS)

1. Type of Well: Oil Well ☐ Gas Well ☐ Other ☒ BRINE WELL ✓

2. Name of Operator

JOHN R STEARNS dba STEARNS ✓

3. Address of Operator

HC 65 BOX 988 CROSSROADS, NM 88114

4. Well Location

Unit Letter P : 200 feet from the SOUTH line and 200 feet from the EAST lineSection 27 Township 9S Range 35E NMPM LEA County ✓

11. Elevation (Show whether DR, RKB, RT, GR, etc.)

12. Check Appropriate Box to Indicate Nature of Notice, Report or Other Data

NOTICE OF INTENTION TO:

PERFORM REMEDIAL WORK ☐ PLUG AND ABANDON ☐
 TEMPORARILY ABANDON ☐ CHANGE PLANS ☐
 PULL OR ALTER CASING ☐ MULTIPLE COMPL ☐
 DOWNHOLE COMMINGLE ☐

SUBSEQUENT REPORT OF:

REMEDIAL WORK ☐ ALTERING CASING ☐
 COMMENCE DRILLING OPNS. ☐ P AND A ☒
 CASING/CEMENT JOB ☐

OTHER: ☐OTHER: ☐

13. Describe proposed or completed operations. (Clearly state all pertinent details, and give pertinent dates, including estimated date of starting any proposed work). SEE RULE 1103. For Multiple Completions: Attach wellbore diagram of proposed completion or recompletion.

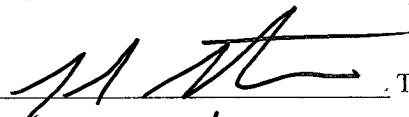
SEE ATTACHED DISCRIPTION OF WORK COMPLETED

Spud Date:

Rig Release Date:

I hereby certify that the information above is true and complete to the best of my knowledge and belief.

SIGNATURE



TITLE

Owner

DATE

4/29/09

Type or print name

John Stearns

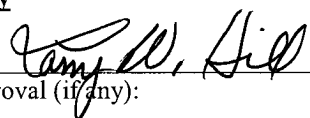
E-mail address:

PHONE:

575 675 2356

For State Use Only

APPROVED BY:



TITLE

DISTRICT 1 SUPERVISOR

DATE

MAY 11 2009

Conditions of Approval (if any):

3/11/2009 RUN IN HOLE TO 2000' AND SPOT 65 SX CLASS "C" CEMENT.

3/12/2009 RIH TAG PLUG AT 1672'. (65 SX IN 5 ½ IS 642'. RETAINED 328' ABOVE THE CASING SHOE. APPROX. 32 SX CEMENT BELOW THE CASING SHOE.) CLOSED BOP TO TEST PLUG. PRESSUED UP TO 300# AND LOST 60# IN 15 MINUTES. POH WITH PIPE AND RIH WITH 5 ½ " AD-1 PACKER TO 516' (17 JTS) COULD NOT GET PACKER TO SET. POH TO 308' (10 JTS) COULD NOT SET PACKER. POH TO 214' (7 JTS) PACKER SET. TESTED BELOW PACKER TO 300#. LOST 60 # IN 15 MINUTES. TESTED ABOVE PACKER. HELD 300 # FOR 30 MINUTES.

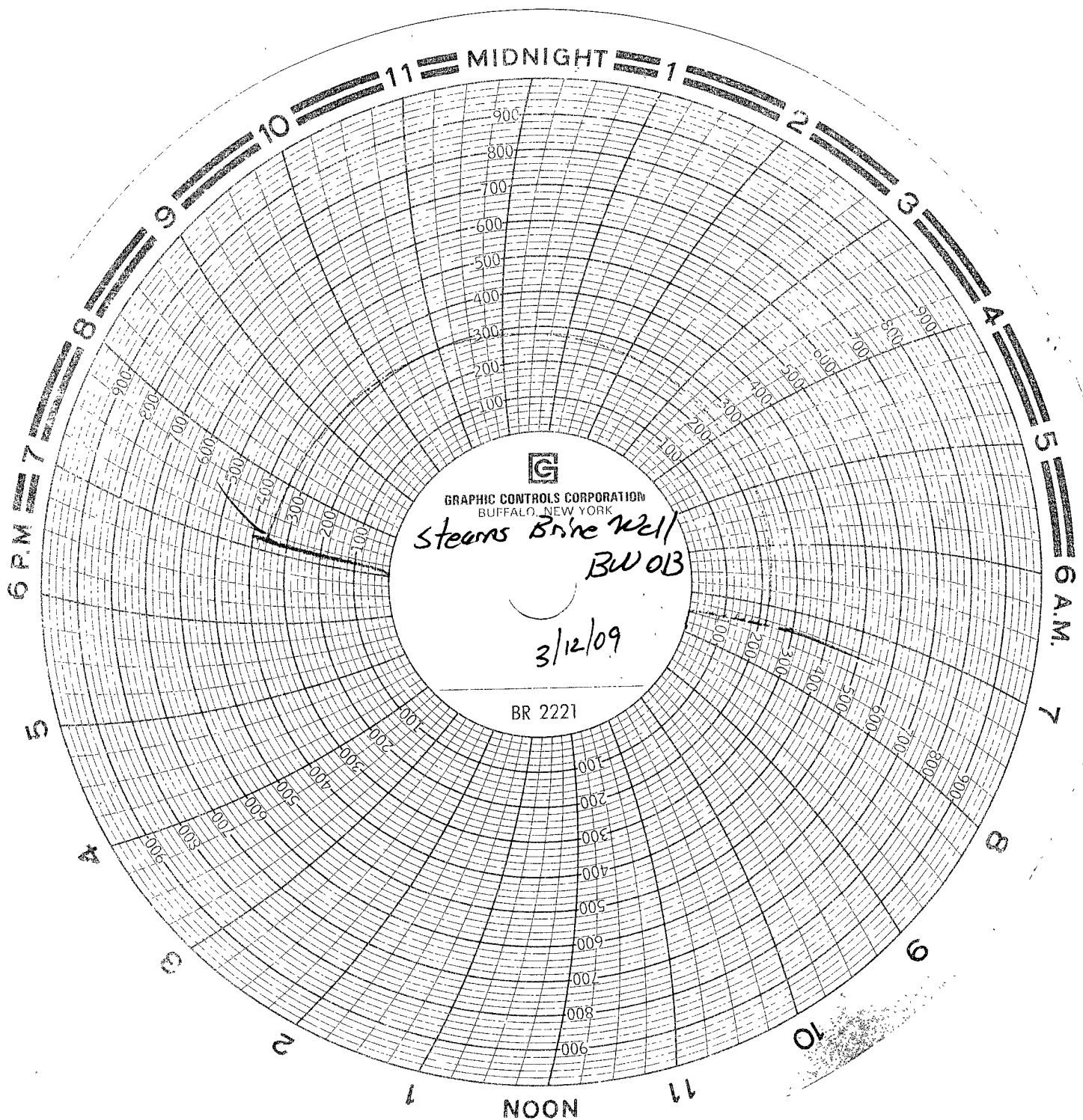
3/13/2009 PUMPED 50 SX OF CLASS "C" CEMENT AT 1672. POH, PICKED UP AD-1 PACKER AND RIH 1 JOINT. PRESSURED UP TO 300 #. LOST 230 # IN 30 MINUTES. RELEASED AND PULLED PACKER. SHUT DOWN UNTIL MONDAY.

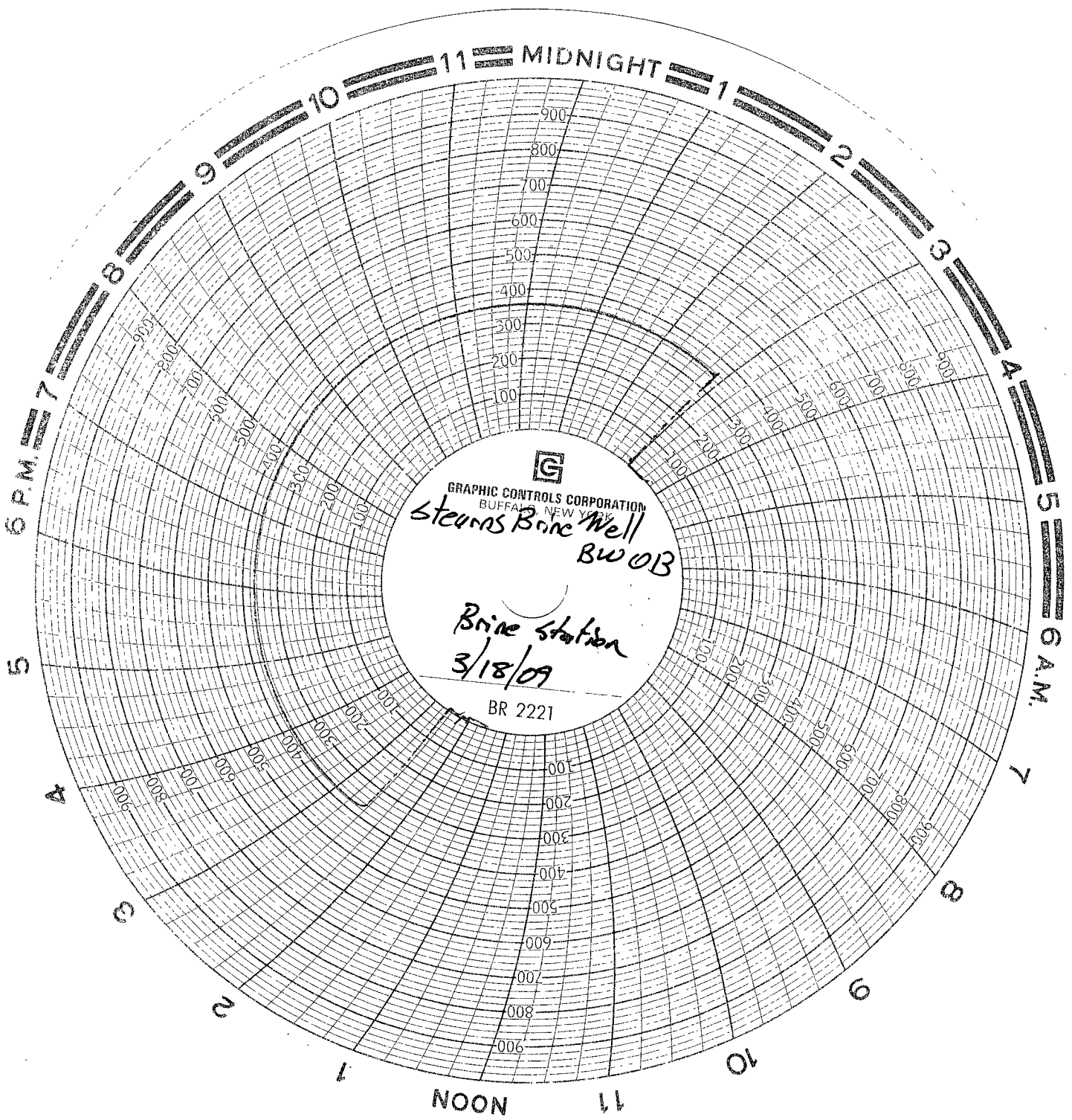
3/16/2009 RIH TAGGED CEMENT AT 1343. PUMPED 50 SX CLASS "C" CEMENT. POH TUBING. PICKED UP PACKER AND 1 JOINT. SET PACKER AND PRESSURED UP TO 300 PSI. LOST 150 PSI IN 1 HOUR. WOC AND TAGGED AT 1022. PUMPED ANOTHER 50 SX CLASS "C" CEMENT. POH TUBING. RIH WITH PACKER AND 1 JOINT. PRESSURED UP TO 300 PSI. STILL LOSING PRESSURE. SHUT IN OVER NIGHT.

3/17/2009 TAGGED PLUG AT 669'. PUMPED 50 SX OF CLASS "C" CEMENT. POH WITH TUBING. PICK UP PACKER AND 1 JOINT. PRESSURE UP TO 300 PSI. STILL BLEEDING OFF. WOC TAG AT 366'. PUMP 25 SX CLASS "C" PLUG. POH TUBING. PICK UP PACKER AND 1 JOINT. PRESSURE UP TO 300 PSI. STILL LOSING PRESSURE. PULL PACKER AND SHUT IN OVER NIGHT.

3/18/2009 PICK UP PACKER AND 1 JOINT. PRESSURE UP TO 375 PSI. DROPPED TO 365 PSI IN 30 MINUTES. PULL PACKER. RIH WITH TUBING AND TAG PLUG AT 217'. PUMP CEMENT TO SURFACE WITH 15 SX OF CLASS "C". RIG DOWN. INSTALL DRYHOLE MARKER AND LEVEL LOCATION.

ASSOCIATED CHARTS AND DIAGRAMS ATTACHED





Stearns KTS Brine Facility Well BW-013
1st plug pumped 3/11/09
Cement to surface 3/18/09

