

## District I

1625 N. French Dr., Hobbs, NM 88240

## District II

1301 W. Grand Avenue, Artesia, NM 88210

## District III

1000 Rio Brazos Rd., Aztec, NM 87410

## District IV

1220 S. St. Francis Dr., Santa Fe, NM 87505

## State of New Mexico

Energy, Minerals &amp; Natural Resources Department

## OIL CONSERVATION DIVISION

1220 South St. Francis Dr.

Santa Fe, NM 87505

Form C-102

Revised October 12, 2005

Submit to Appropriate District Office

State Lease - 4 Copies

Fee Lease - 3 Copies

☒ AMENDED REPORT

## WELL LOCATION AND ACREAGE DEDICATION PLAT

'API Number 30-025-33697	'Pool Code 59110	'Pool Name Teas Yates; Seven-Rivers West
'Property Code 30422	'Property Name West Teas Yates WPU Seven Rivers Unit	'Well Number 621
'OGRID No. 147179	'Operator Name CHESAPEAKE OPERATING, INC.	'Elevation 3540'

## Surface Location

UL or lot No.	Section	Township	Range	Lot Idn	Feet from the	North/South line	Feet from the	East/West line	County
C	16	20-S	33-E		330	NORTH	2310	WEST	LEA

## Bottom Hole Location If Different From Surface

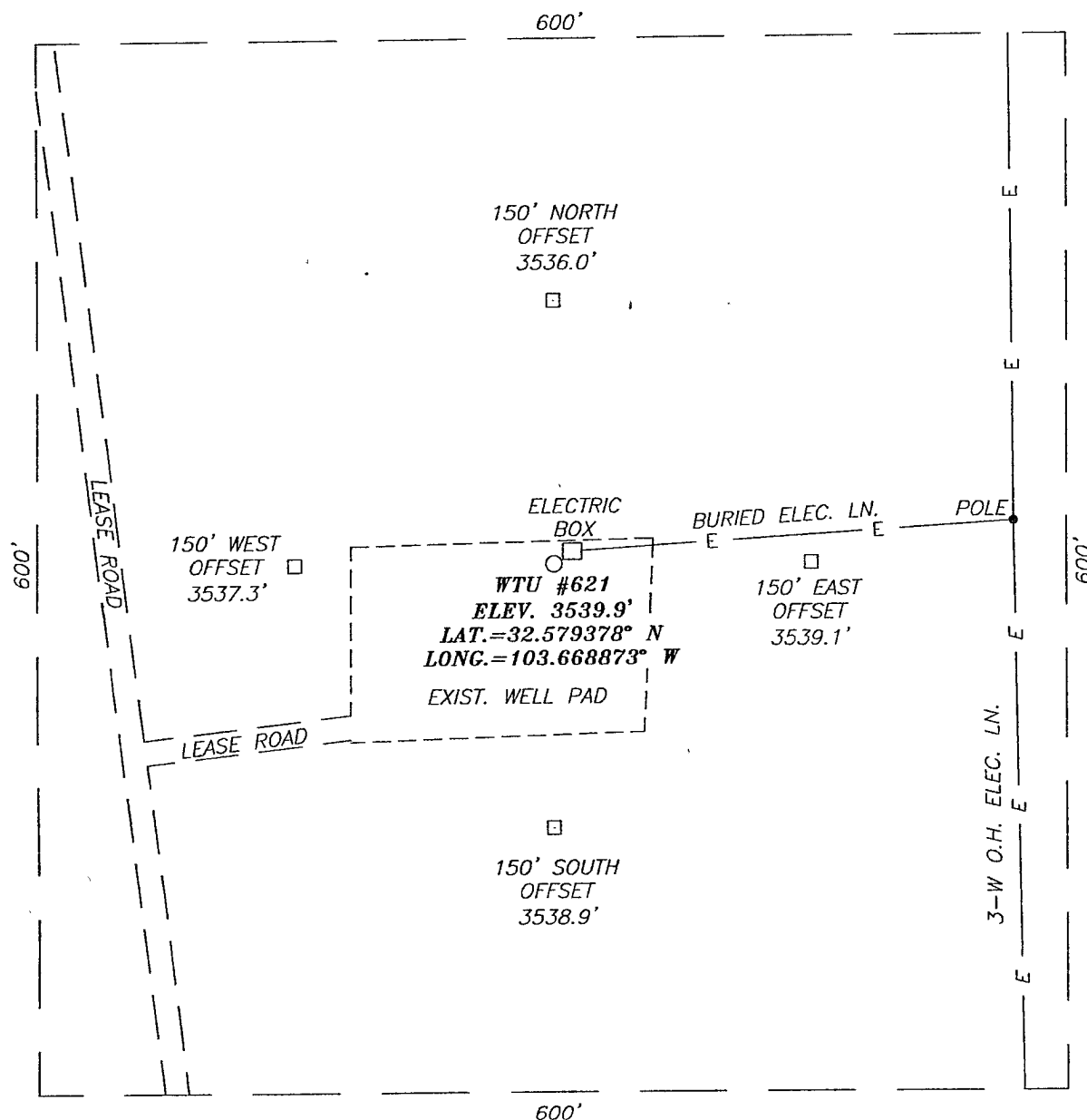
UL or lot No.	Section	Township	Range	Lot Idn	Feet from the	North/South line	Feet from the	East/West line	County

Dedicated Acres	Joint or Infill	Consolidation Code	Order No.
40			

NO ALLOWABLE WILL BE ASSIGNED TO THIS COMPLETION UNTIL ALL INTERESTS HAVE BEEN CONSOLIDATED  
OR A NON-STANDARD UNIT HAS BEEN APPROVED BY THE DIVISION

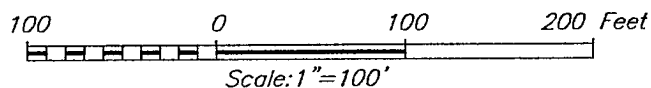
<p>2310'</p> <p>330'</p> <p>GEODETIC COORDINATES NAD 27 NME</p> <p>Y=575128.5 N X=704675.4 E</p> <p>LAT.=32.579378° N LONG.=103.668873° W</p>	<p><b>OPERATOR CERTIFICATION</b></p> <p>I hereby certify that the information herein is true and complete to the best of my knowledge and belief, and that this organization either owns a working interest or unleased mineral interest in the land including the proposed bottom hole location or has a right to drill this well at this location pursuant to a contract with an owner of such mineral or working interest, or to a voluntary pooling agreement or a compulsory pooling order heretofore entered by the division.</p> <p><i>Ralph Skinner Jr.</i> 5509 Signature Date <i>Ralph Skinner Jr.</i> Printed Name</p> <p><b>SURVEYOR CERTIFICATION</b></p> <p>I hereby certify that the well location shown on this plat was plotted from field notes of actual surveys made by me or under my supervision, and that the same is true and correct to the best of my belief.</p> <p>GARY G. EIDSON FEBRUARY 13, 2009 Date Surveyed Signature &amp; Seal of Professional Surveyor 12641 Certificate No. GARY EIDSON 12641</p>
---	---

**SECTION 16, TOWNSHIP 20 SOUTH, RANGE 33 EAST, N.M.P.M.,**  
LEA COUNTY, NEW MEXICO



**DIRECTIONS TO LOCATION**

FROM THE INTERSECTION OF U.S. HWY. #62-180 AND ST. HWY. #176 GO NORTHEAST ON U.S. HWY. #62-180 APPROX. 3.9 MILES. TURN LEFT AT CATTLE GUARD AND GO NORTH APPROX. 0.2 MILES. TURN LEFT AND GO WEST APPROX. 0.3 MILES. VEER RIGHT AND GO NORTH APPROX. 0.2 MILES. TURN RIGHT AND GO EAST APPROX. 250 FEET TO THIS LOCATION.



**CHESAPEAKE OPERATING, INC.**

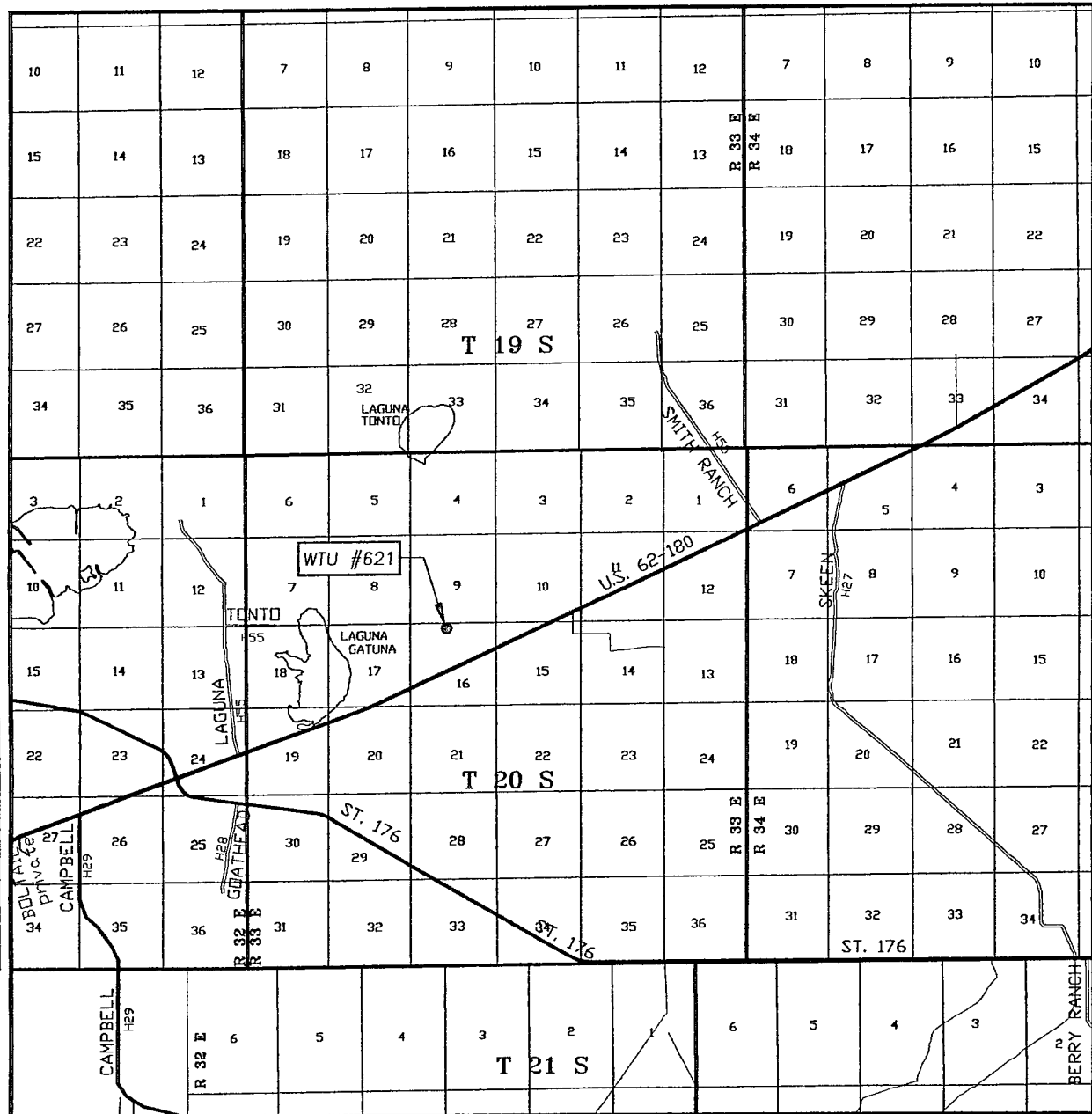
WTU #621 WELL  
LOCATED 330 FEET FROM THE NORTH LINE  
AND 2310 FEET FROM THE WEST LINE OF SECTION 16,  
TOWNSHIP 20 SOUTH, RANGE 33 EAST, N.M.P.M.,  
LEA COUNTY, NEW MEXICO.

Survey Date: 2/13/09	Sheet 1 of 1 Sheets
W.O. Number: 09.11.0146	Dr By: LA
Date: 2/23/09	Rev 1:N/A
09110146	Scale: 1"=100'



PROVIDING SURVEYING SERVICES  
SINCE 1946  
**JOHN WEST SURVEYING COMPANY**  
412 N. DAL PASO  
HOBBS, N.M. 88240  
(575) 393-3117

# VICINITY MAP



SCALE: 1" = 2 MILES

SEC. 16 TWP. 20-S RGE. 33-E

SURVEY N.M.P.M.

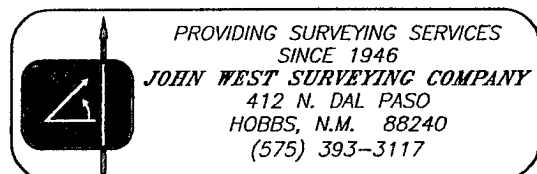
COUNTY LEA STATE NEW MEXICO

DESCRIPTION 330' FNL & 2310' FWL

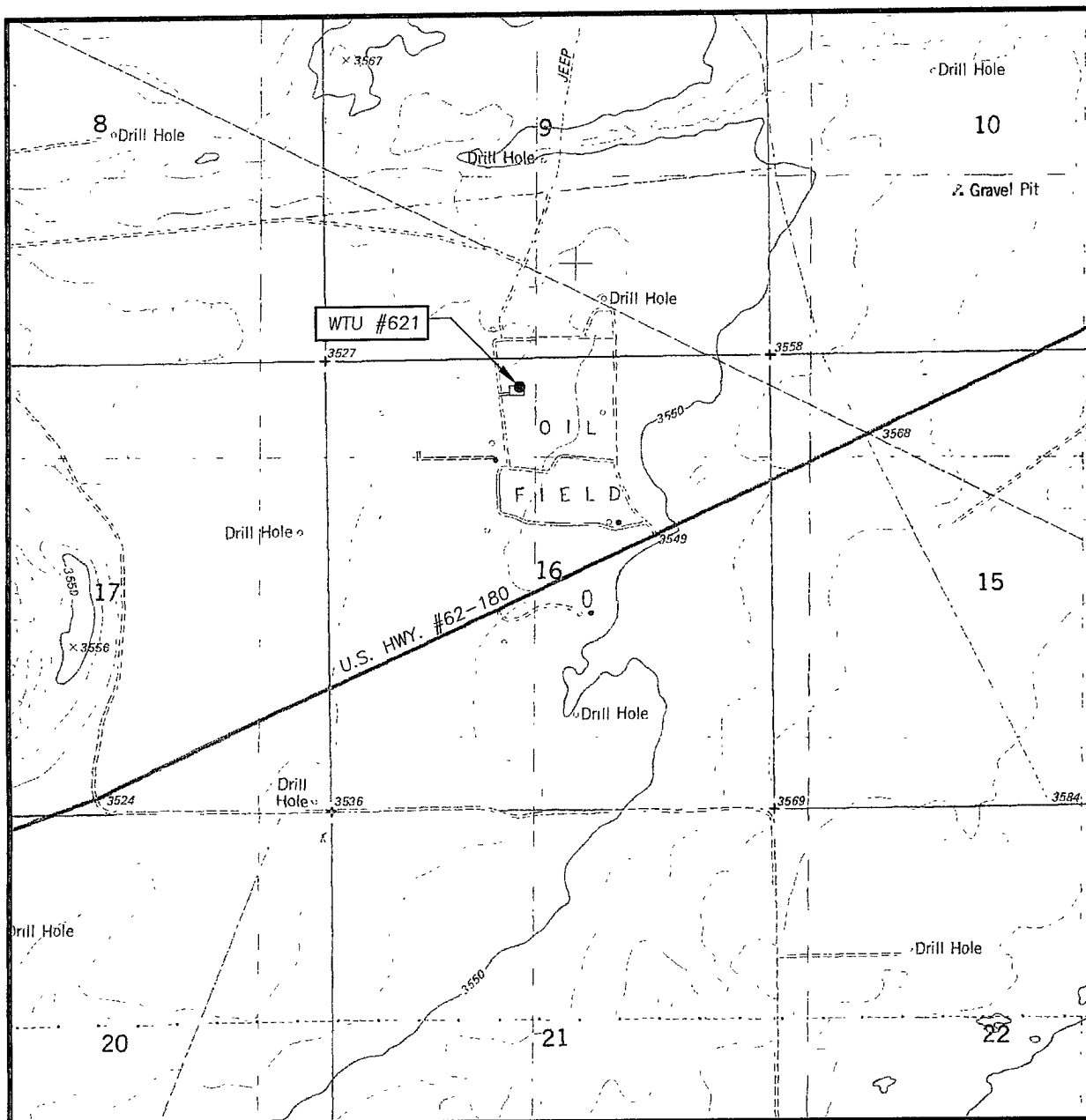
ELEVATION 3540'

OPERATOR CHESAPEAKE OPERATING, INC.

LEASE WTU



# LOCATION VERIFICATION MAP



SCALE: 1" = 2000'

CONTOUR INTERVAL:  
LAGUNA GATUNA, N.M. - 10'

SEC. 16 TWP. 20-S RGE. 33-E

SURVEY N.M.P.M.

COUNTY LEA STATE NEW MEXICO

DESCRIPTION 330' FNL & 2310' FWL

ELEVATION 3540'

OPERATOR CHESAPEAKE OPERATING, INC.

LEASE WTU

U.S.G.S. TOPOGRAPHIC MAP  
LAGUNA GATUNA, N.M.

