

DISTRICT I
1625 N. French Dr., Hobbs, NM 88240

DISTRICT II
1301 W. Grand Avenue, Artesia, NM 88210

DISTRICT III
1000 Rio Brazos Rd., Aztec, NM 87410

DISTRICT IV
1220 S. St. Francis Dr., Santa Fe, NM 87505

State of New Mexico
Energy, Minerals & Natural Resources Department
OIL CONSERVATION DIVISION
1220 South St. Frances Dr.
Santa Fe, NM 87505

Form C-102
Revised October 12, 2005
Submit to Appropriate District Office
State Lease - 4 Copies
Fee Lease - 3 Copies

☐ AMENDED REPORT

WELL LOCATION AND ACREAGE DEDICATION PLAT

API Number 30-025- 38912	Pool Code 29710	Pool Name Hardy; Blinebry
Property Code 31471	Property Name STATE F-1	Well Number 23
OGRID No. 217817	Operator Name CONOCOPHILLIPS COMPANY	Elevation 3496'

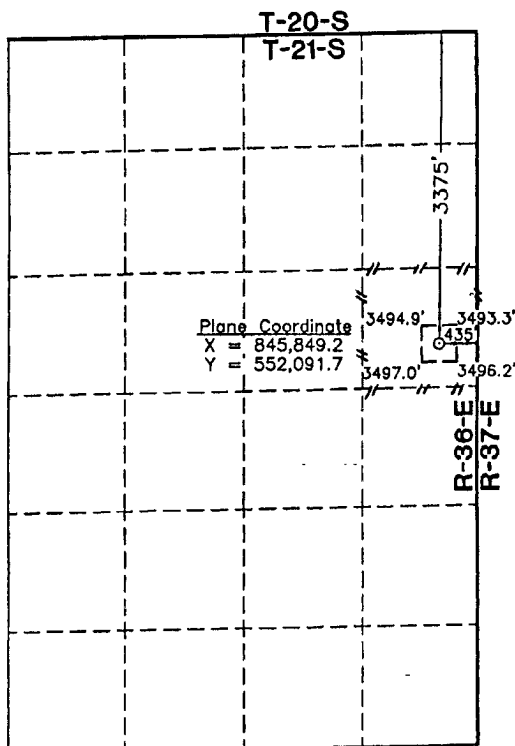
Surface Location

UL or lot No.	Section	Township	Range	Lot Idn	Feet from the	North/South line	Feet from the	East/West line	County
9	1	21 S	36 E		3375	NORTH	435	EAST	LEA

Bottom Hole Location If Different From Surface

UL or lot No.	Section	Township	Range	Lot Idn	Feet from the	North/South line	Feet from the	East/West line	County
Dedicated Acres 40	Joint or Infill	Consolidation Code	Order No.						

NO ALLOWABLE WILL BE ASSIGNED TO THIS COMPLETION UNTIL ALL INTERESTS HAVE BEEN CONSOLIDATED OR A NON-STANDARD UNIT HAS BEEN APPROVED BY THE DIVISION



NOTE:

- 1) Plane Coordinates shown hereon are Transverse Mercator Grid and Conform to the "New Mexico Coordinate System", New Mexico East Zone, North American Datum of 1927. Distances shown hereon are mean horizontal surface values.

1" = 2000'

OPERATOR CERTIFICATION

I hereby certify the information contained herein is true and complete to the best of my knowledge and belief, and that this organization either owns a working interest or unleased mineral interest in the land including the proposed bottom hole location or has a right to drill this well at this location pursuant to a contract with an owner of such a mineral or working interest, or to a voluntary pooling agreement or a compulsory pooling order heretofore entered by the division.

Celeste G. Dale 05/19/08
Signature Date
Celeste G. Dale
Printed Name

SURVEYOR CERTIFICATION

I hereby certify that the well location shown on this plat was plotted from field notes of actual surveys made by me or under my supervision and that the same is true and correct to the best of my belief.

February 18, 2008

Date of Survey LVA
Signature & Seal of Professional Surveyor

[Signature]
W.O. Num. 2008-0133

Certificate No. MACON McDONALD 12185