

DISTRICT I
1625 N. FRENCH DR., HOBBS, NM 88240

DISTRICT II
1301 W. GRAND AVENUE, ARTESIA, NM 88210

DISTRICT III
1000 Rio Brazos Rd., Aztec, NM 87410

DISTRICT IV
1220 S ST. FRANCIS DR., SANTA FE, NM 87505

RECEIVED
State of New Mexico
Energy, Minerals and Natural Resources Department

NOV 1 2008
OIL CONSERVATION DIVISION
1220 SOUTH ST. FRANCIS DR.
SANTA FE, NM 87505
HOBBS OCT

RECEIVED
Form C-102
Revised October 12, 2005
Submit to Appropriate District Office
State Lease - 4 Copies
Fee Lease - 3 Copies
JUL 21 2008
HOBBS OCT

WELL LOCATION AND ACREAGE DEDICATION PLAT

AMENDED REPORT

API Number 30-025-39039	Pool Code 22900	Pool Name Eunice; Blk-Tw-Dg-North
Property Code 22503	Property Name NEDU	Well Number 148
OGRID No. 873	Operator Name APACHE CORPORATION	Elevation 3497'

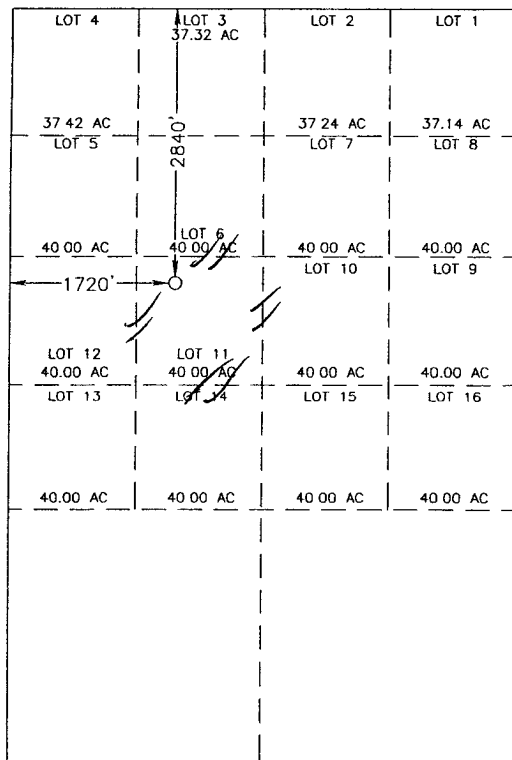
Surface Location

UL or lot No.	Section	Township	Range	Lot Idn	Feet from the	North/South line	Feet from the	East/West line	County
C	2	21-S	37-E	11	2840	NORTH	1720	WEST	LEA

Bottom Hole Location If Different From Surface

UL or lot No.	Section	Township	Range	Lot Idn	Feet from the	North/South line	Feet from the	East/West line	County
Dedicated Acres 40.0	Joint or Infill	Consolidation Code	Order No.						

NO ALLOWABLE WILL BE ASSIGNED TO THIS COMPLETION UNTIL ALL INTERESTS HAVE BEEN CONSOLIDATED
OR A NON-STANDARD UNIT HAS BEEN APPROVED BY THE DIVISION

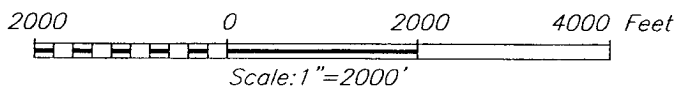


GEODETIC COORDINATES
NAD 27 NME

Y=552895.8 N
X=868989.2 E

LAT.=32°51'43.24" N
LONG.=103°13'33.32" W

LAT.=32°30'51.57" N
LONG.=103°08'10.80" W



OPERATOR CERTIFICATION

I hereby certify that the information herein is true and complete to the best of my knowledge and belief, and that this organization either owns a working interest or unleased mineral interest in the land including the proposed bottom hole location or has a right to drill this well at this location pursuant to a contract with an owner of such mineral or working interest, or to a voluntary pooling agreement or a compulsory pooling order heretofore entered by the division.

Lana Williams 8/18/08
Signature Date

Lana Williams
Printed Name

SURVEYOR CERTIFICATION

I hereby certify that the well location shown on this plat was plotted from field notes of actual surveys made by me or under my supervision, and that the same is true and correct to the best of my belief.

RONALD J. EIDSON
Date Surveyed 8/23/07
Signature & Seal of Professional Surveyor 3239
RECEIVED
PROFESSIONAL SURVEYOR
8/23/07

Certificate No. GARY EIDSON 12641
RONALD J. EIDSON 3239

DISTRICT I
1625 N. FRENCH DR., HOBBS, NM 88240

State of New Mexico
Energy, Minerals and Natural Resources Department

RECEIVED

Form C-102

DISTRICT II
1301 W. GRAND AVENUE, ARTESIA, NM 88210

OIL CONSERVATION DIVISION
1220 SOUTH ST. FRANCIS DR.
Santa Fe, New Mexico 87505

Revised October 12, 2005
Submit to Appropriate District Office
State Lease - 4 Copies
Fee Lease - 3 Copies

DISTRICT III
1000 Rio Brazos Rd., Aztec, NM 87410

DISTRICT IV
1220 S. ST. FRANCIS DR., SANTA FE, NM 87505

WELL LOCATION AND ACREAGE DEDICATION PLAT AMENDED REPORT

API Number 30-025-39039	Pool Code 22900	Pool Name Eunice; Bti-Tu-Dr, North
Property Code 22503	Property Name NEDU	Well Number 148
OGRID No. 873	Operator Name APACHE CORPORATION	Elevation 3497'

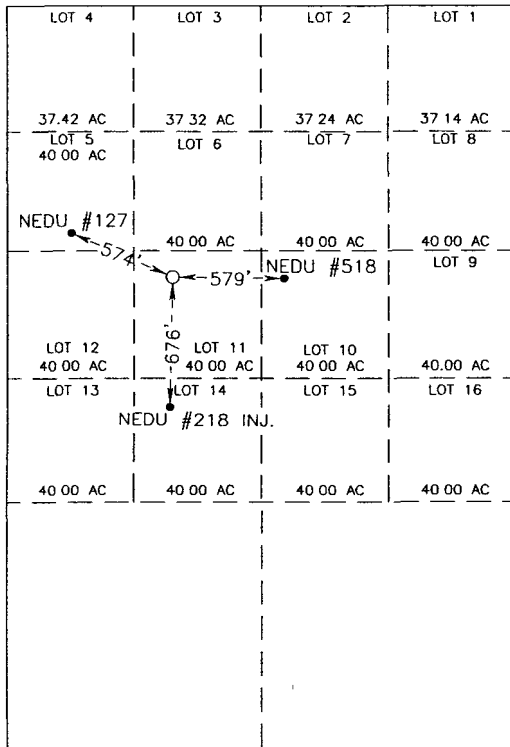
Surface Location

UL or lot No.	Section	Township	Range	Lot Idn	Feet from the	North/South line	Feet from the	East/West line	County
C	2	21-S	37-E	11	2840	NORTH	1720	WEST	LEA

Bottom Hole Location If Different From Surface

UL or lot No.	Section	Township	Range	Lot Idn	Feet from the	North/South line	Feet from the	East/West line	County
Dedicated Acres 40.0	Joint or Infill	Consolidation Code	Order No.						

NO ALLOWABLE WILL BE ASSIGNED TO THIS COMPLETION UNTIL ALL INTERESTS HAVE BEEN CONSOLIDATED
OR A NON-STANDARD UNIT HAS BEEN APPROVED BY THE DIVISION



GEODETIC COORDINATES
NAD 27 NME

Y=552895.8 N
X=868989.2 E

LAT.=32°51'43.24" N
LONG.=103°13'33.32" W

LAT.=32°30'51.57" N
LONG.=103°08'10.80" W

OPERATOR CERTIFICATION

I hereby certify that the information herein is true and complete to the best of my knowledge and belief, and that this organization either owns a working interest or unleased mineral interest in the land including the proposed bottom hole location or has a right to drill this well at this location pursuant to a contract with an owner of such mineral or working interest, or to a voluntary pooling agreement or a compulsory pooling order heretofore entered by the division.

Lana Williams 7/18/08
Signature Date

Lana Williams
Printed Name

SURVEYOR CERTIFICATION

I hereby certify that the well location shown on this plat was plotted from field notes of actual surveys made by me or under my supervision, and that the same is true and correct to the best of my belief.

AUGUST 23, 2007

Date Surveyed AR
Signature & Seal of
Professional Surveyor

07.11.1131

Certificate No. GARY EIDSON 12641
RONALD J. EIDSON 3239