

District I
1625 N. French Dr., Hobbs, NM 88240
District II
811 South First, Artesia, NM 88210
District III
1000 Rio Brazos Road, Aztec, NM 87410
District IV
2040 South Pacheco, Santa Fe, NM 87505

State of New Mexico
Energy Minerals and Natural Resources

Form C-101
Revised March 17, 1999

Oil Conservation Division
2040 South Pacheco
Santa Fe, NM 87505

Submit to appropriate District Office
State Lease - 6 Copies
Fee Lease - 5 Copies

☐ AMENDED REPORT

APPLICATION FOR PERMIT TO DRILL, RE-ENTER, DEEPEN, PLUGBACK, OR ADD A ZONE

Operator Name and Address Xeric Oil & Gas Corporation P. O. Box 352 Midland, TX 79702		OGRID Number 025482
		API Number 30-025-36235
Property Code 32154	Property Name Duncan	Well No. 1

Surface Location

UL or lot no.	Section	Township	Range	Lot Idn	Feet from the	North/South line	Feet from the	East/West line	County
A	19	20S	39E		660	North	500	East	Lea

Proposed Bottom Hole Location If Different From Surface

UL or lot no.	Section	Township	Range	Lot Idn	Feet from the	North/South line	Feet from the	East/West line	County

Proposed Pool 1 DK Abo/Blinebry Oil & Gas	Proposed Pool 2 DK Drinkard/Warren; Tubb; East
--	---

Work Type Code N	Well Type Code O	Cable/Rotary R	Lease Type Code P	Ground Level Elevation 3527'
Multiple No	Proposed Depth -8,000	Formation Abo	Contractor Key Energy	Spud Date ASAP

Proposed Casing and Cement Program

Hole Size	Casing Size	Casing weight/foot	Setting Depth	Sacks of Cement	Estimated TOC
12 1/4"	8 5/8"	24#	1600'	800	Circulated
7 7/8"	5 1/2"	17#	7500'	900	Est. 2900'

Describe the proposed program. If this application is to DEEPEN or PLUG BACK, give the data on the present productive zone and proposed new productive zone.
Describe the blowout prevention program, if any. Use additional sheets if necessary.

1. Drill 12 1/4" hole to approximately 1600' or hard formation w/fresh water.
2. Set 8 5/8" csg & cement w/600 sx "c" + 4% gel + 2% Cacl + 200 sx "c" + 2% Cacl; circulate cement to surface.
3. Drill 7 7/8" hole with brine water to 8000'. Run open hole logs.
4. Set 5 1/2" csg. Cement w/555 sx "c" 35:65:poz + 6% gel + 5% salt + .25% celloflake; tail w/345 sx "c"; TOC ± 2900'.

Permit Expires 1 Year From Approval
Date Unless Drilling Underway

I hereby certify that the information given above is true and complete to the best of my knowledge and belief.

Signature: *Angie Crawford*

Printed name: Angie Crawford

Title: Production Analyst

Date: 3/27/03

Phone: 915-683-3171

OIL CONSERVATION DIVISION

Approved by:

Title: *[Signature]* PETROLEUM ENGINEER

Approval Date: MAR 31 2003 Expiration Date:

Conditions of Approval:

Attached ☐

DISTRICT I

P.O. Box 1980, Hobbs, NM 88241-1980

DISTRICT II

P.O. Drawer DD, Artesia, NM 88211-0719

DISTRICT III

1000 Rio Brazos Rd., Aztec, NM 87410

DISTRICT IV

P.O. BOX 2088, SANTA FE, N.M. 87504-2088

State of New Mexico

Energy, Minerals and Natural Resources Department

OIL CONSERVATION DIVISION

P.O. Box 2088

Santa Fe, New Mexico 87504-2088

Form C-102

Revised February 10, 1994

Submit to Appropriate District Office

State Lease - 4 Copies

Fee Lease - 3 Copies

WELL LOCATION AND ACREAGE DEDICATION PLAT

☐ AMENDED REPORT

API Number 30-025-36235	Pool Code 15200	Pool Name DK ABO
Property Code 32154	Property Name DUNCAN	Well Number 1
OGRID No. 025482	Operator Name XERIC OIL & GAS CORPORATION	Elevation 3527'

Surface Location

UL or lot No.	Section	Township	Range	Lot Idn	Feet from the	North/South line	Feet from the	East/West line	County
A	19	20-S	39-E		600	NORTH	500	EAST	LEA

Bottom Hole Location If Different From Surface

UL or lot No.	Section	Township	Range	Lot Idn	Feet from the	North/South line	Feet from the	East/West line	County

Dedicated Acres	Joint or Infill	Consolidation Code	Order No.
40	NO		

NO ALLOWABLE WILL BE ASSIGNED TO THIS COMPLETION UNTIL ALL INTERESTS HAVE BEEN CONSOLIDATED
OR A NON-STANDARD UNIT HAS BEEN APPROVED BY THE DIVISION

	OPERATOR CERTIFICATION I hereby certify the the information contained herein is true and complete to the best of my knowledge and belief. Signature Angie Crawford Printed Name Production Analyst Title 3/27/03 Date	
	SURVEYOR CERTIFICATION I hereby certify that the well location shown on this plat was plotted from field notes of actual surveys made by me or under my supervision, and that the same is true and correct to the best of my belief. MARCH 19, 2003 Date Surveyed Signature & Seal of Professional Surveyor 03.11.0305 Certificate No. RONALD J. EIDSON 3239 GARY EIDSON 12641	

DISTRICT I

P.O. Box 1980, Hobbs, NM 88241-1980

State of New Mexico

Energy, Minerals and Natural Resources Department

Form C-102

Revised February 10, 1994

Submit to Appropriate District Office

State Lease - 4 Copies

Fee Lease - 3 Copies

DISTRICT II

P.O. Drawer DD, Artesia, NM 88211-0719

OIL CONSERVATION DIVISION

P.O. Box 2088

Santa Fe, New Mexico 87504-2088

DISTRICT III

1000 Rio Brazos Rd., Aztec, NM 87410

DISTRICT IV

P.O. BOX 2088, SANTA FE, N.M. 87504-2088

WELL LOCATION AND ACREAGE DEDICATION PLAT

☐ AMENDED REPORT

API Number 30-025-36235	Pool Code 06660	Pool Name Blinebry Oil & Gas
Property Code 32154	Property Name DUNCAN	Well Number 1
OGRID No. 025482	Operator Name XERIC OIL & GAS CORPORATION	Elevation 3527'

Surface Location

UL or lot No.	Section	Township	Range	Lot Idn	Feet from the	North/South line	Feet from the	East/West line	County
A	19	20-S	39-E		600	NORTH	500	EAST	LEA

Bottom Hole Location If Different From Surface

UL or lot No.	Section	Township	Range	Lot Idn	Feet from the	North/South line	Feet from the	East/West line	County

Dedicated Acres	Joint or Infill	Consolidation Code	Order No.
40	NO		

NO ALLOWABLE WILL BE ASSIGNED TO THIS COMPLETION UNTIL ALL INTERESTS HAVE BEEN CONSOLIDATED
OR A NON-STANDARD UNIT HAS BEEN APPROVED BY THE DIVISION

	OPERATOR CERTIFICATION I hereby certify the the information contained herein is true and complete to the best of my knowledge and belief. Signature <u>Angie Crawford</u> Printed Name <u>Angie Crawford</u> Title <u>Production Analyst</u> Date <u>3/27/03</u>	
	SURVEYOR CERTIFICATION I hereby certify that the well location shown on this plat was plotted from field notes of actual surveys made by me or under my supervision, and that the same is true and correct to the best of my belief. MARCH 19, 2003 Date Surveyed _____ L.A. Signature & Seal of Professional Surveyor <u>GARY EIDSON</u> 3/20/03 Certificate No. RONALD J. EIDSON 3239 GARY EIDSON 12641	

DISTRICT I

P.O. Box 1980, Hobbs, NM 88241-1980

State of New Mexico

Energy, Minerals and Natural Resources Department

Form C-102

Revised February 10, 1994

Submit to Appropriate District Office

State Lease - 4 Copies

Fee Lease - 3 Copies

DISTRICT II

P.O. Drawer DD, Artesia, NM 88211-0719

OIL CONSERVATION DIVISION

P.O. Box 2088

Santa Fe, New Mexico 87504-2088

DISTRICT III

1000 Rio Brazos Rd., Aztec, NM 87410

DISTRICT IV

P.O. Box 2088, Santa Fe, N.M. 87504-2088

WELL LOCATION AND ACREAGE DEDICATION PLAT

☐ AMENDED REPORT

API Number 30-025-36235	Pool Code 15390	Pool Name DK Drinkard
Property Code 32154	Property Name DUNCAN	Well Number 1
OGRID No. 025482	Operator Name XERIC OIL & GAS CORPORATION	Elevation 3527'

Surface Location

UL or lot No.	Section	Township	Range	Lot Idn	Feet from the	North/South line	Feet from the	East/West line	County
A	19	20-S	39-E		600	NORTH	500	EAST	LEA

Bottom Hole Location If Different From Surface

UL or lot No.	Section	Township	Range	Lot Idn	Feet from the	North/South line	Feet from the	East/West line	County

Dedicated Acres	Joint or Infill	Consolidation Code	Order No.
40	NO		

NO ALLOWABLE WILL BE ASSIGNED TO THIS COMPLETION UNTIL ALL INTERESTS HAVE BEEN CONSOLIDATED
OR A NON-STANDARD UNIT HAS BEEN APPROVED BY THE DIVISION

	OPERATOR CERTIFICATION I hereby certify the the information contained herein is true and complete to the best of my knowledge and belief. <u>Angie Crawford</u> Signature <u>Angie Crawford</u> Printed Name <u>Production Analyst</u> Title <u>3/27/03</u> Date	
	SURVEYOR CERTIFICATION I hereby certify that the well location shown on this plat was plotted from field notes of actual surveys made by me or under my supervision, and that the same is true and correct to the best of my belief. <u>MARCH 19, 2003</u> Date Surveyed Signature & Seal of Professional Surveyor <u>GARY EIDSON</u> 3/20/03 Certificate No. RONALD L. EIDSON 3239 GARY EIDSON 12641	

DISTRICT I
P.O. Box 1980, Hobbs, NM 88241-1980

DISTRICT II
P.O. Drawer DD, Artesia, NM 88211-0719

DISTRICT III
1000 Rio Brazos Rd., Aztec, NM 87410

DISTRICT IV
P.O. Box 2088, Santa Fe, N.M. 87504-2088

State of New Mexico
Energy, Minerals and Natural Resources Department

OIL CONSERVATION DIVISION
P.O. Box 2088
Santa Fe, New Mexico 87504-2088

Form C-102
Revised February 10, 1994
Submit to Appropriate District Office
State Lease - 4 Copies
Fee Lease - 3 Copies

WELL LOCATION AND ACREAGE DEDICATION PLAT

☐ AMENDED REPORT

API Number 30-025-36235	Pool Code 87085	Pool Name East-Warren Tubb
Property Code 32154	Property Name DUNCAN	Well Number 1
GRID No. 025482	Operator Name XERIC OIL & GAS CORPORATION	Elevation 3527'

Surface Location

UL or lot No. A	Section 19	Township 20-S	Range 39-E	Lot Idn	Feet from the 600	North/South line NORTH	Feet from the 500	East/West line EAST	County LEA
--------------------	---------------	------------------	---------------	---------	----------------------	---------------------------	----------------------	------------------------	---------------

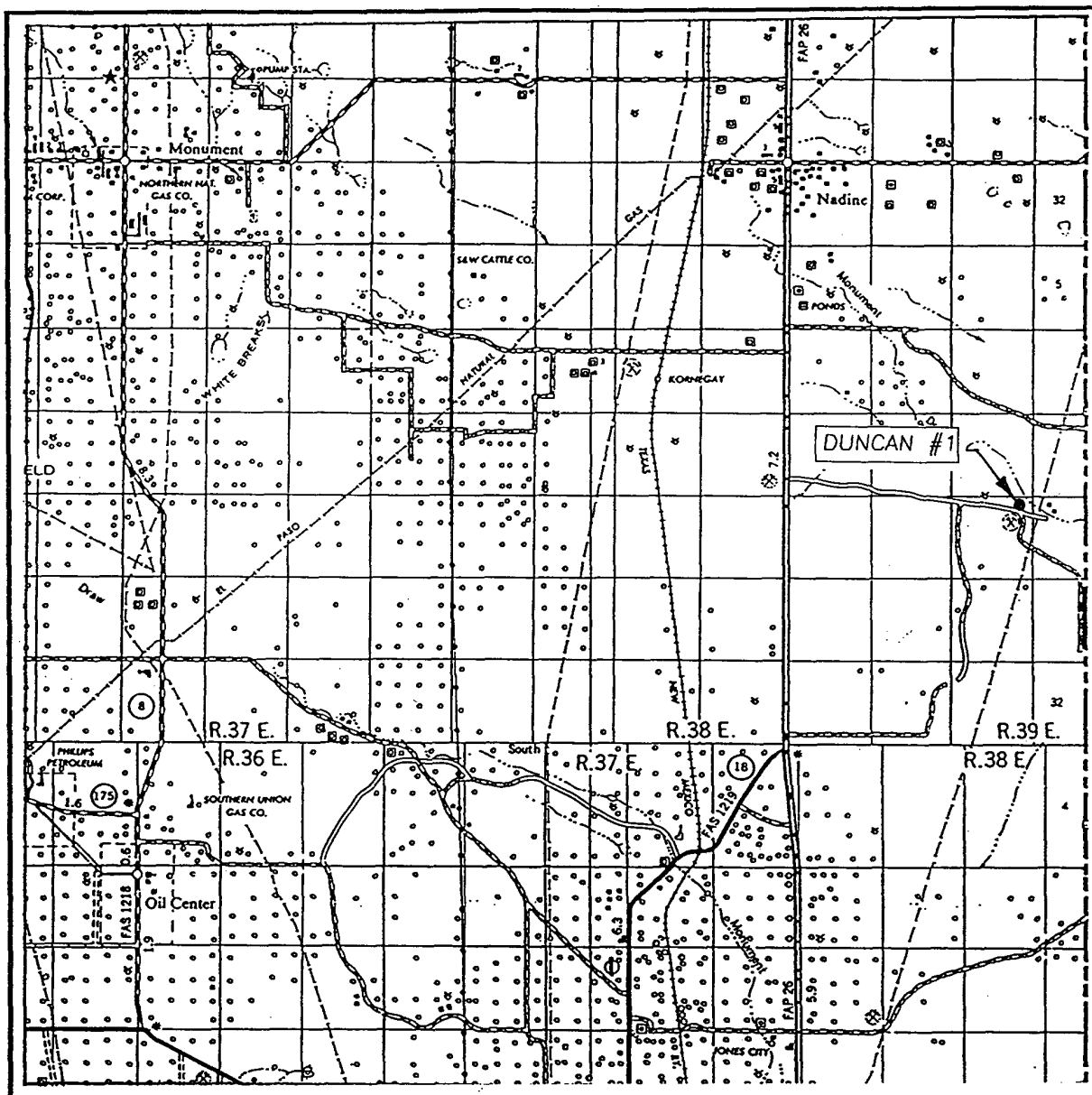
Bottom Hole Location If Different From Surface

UL or lot No.	Section	Township	Range	Lot Idn	Feet from the	North/South line	Feet from the	East/West line	County
---------------	---------	----------	-------	---------	---------------	------------------	---------------	----------------	--------

Dedicated Acres 40	Joint or Infill NO	Consolidation Code	Order No.
-----------------------	-----------------------	--------------------	-----------

NO ALLOWABLE WILL BE ASSIGNED TO THIS COMPLETION UNTIL ALL INTERESTS HAVE BEEN CONSOLIDATED
OR A NON-STANDARD UNIT HAS BEEN APPROVED BY THE DIVISION

	OPERATOR CERTIFICATION I hereby certify the the information contained herein is true and complete to the best of my knowledge and belief. Signature Angie Crawford Printed Name Production Analyst Title 3/27/03 Date	
	SURVEYOR CERTIFICATION I hereby certify that the well location shown on this plat was plotted from field notes of actual surveys made by me or under my supervision, and that the same is true and correct to the best of my belief. MARCH 19, 2003 Date Surveyed Signature & Seal of Professional Surveyor 3/20/03 Certificate No. RONALD L. EDSON 3239 GARY EDSON 12641	



SEC. 19 TWP. 20-S RGE. 39-E

SURVEY N.M.P.M.

COUNTY _____ LEA _____

DESCRIPTION 600' FNL & 500' FEL

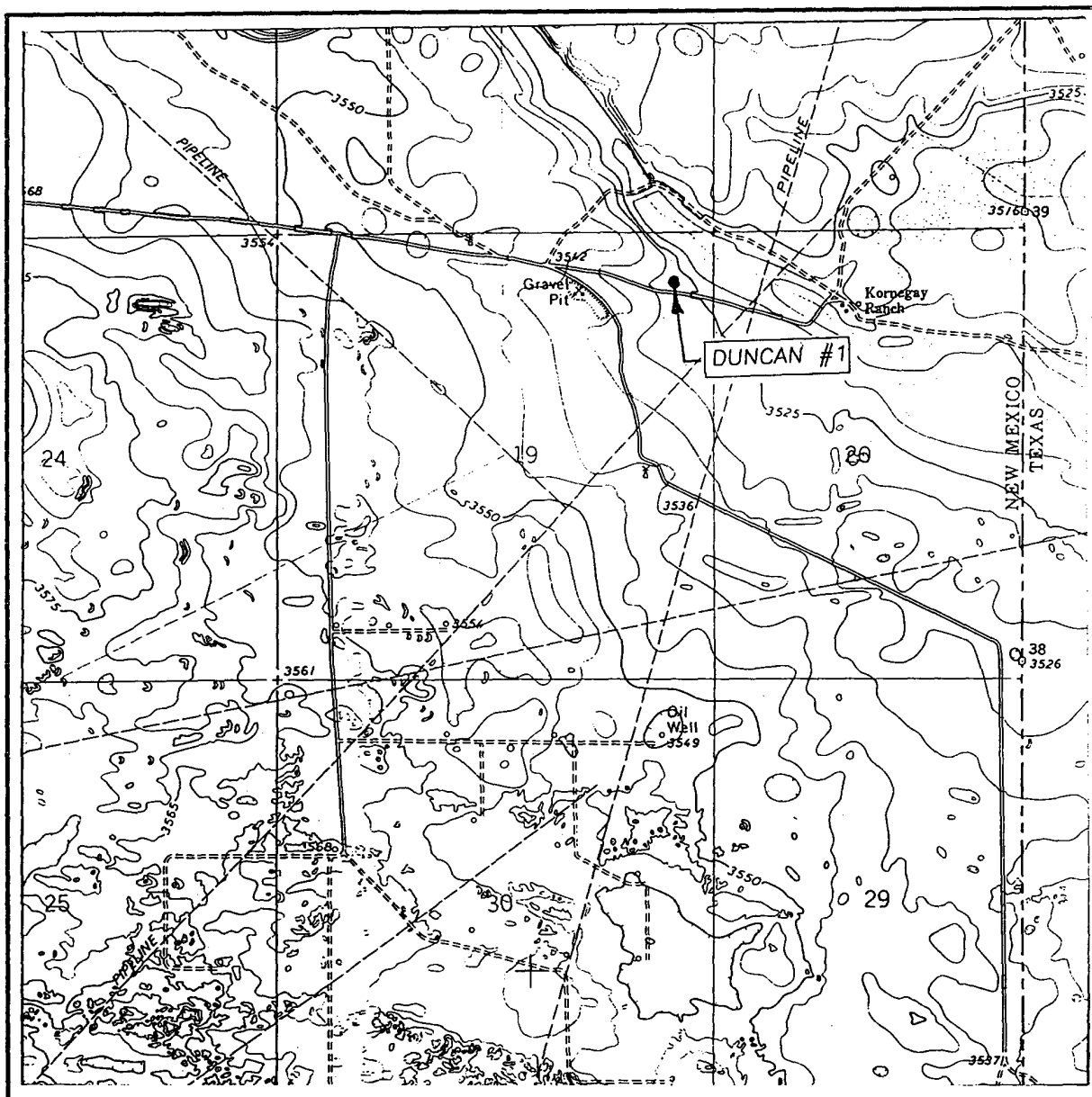
ELEVATION 3527'

OPERATOR XERIC OIL & GAS CORPORATION

LEASE DUNCAN

JOHN WEST SURVEYING
HOBBS, NEW MEXICO
(505) 393-3117

LOCATION VERIFICATION MAP



SCALE: 1" = 2000'

CONTOUR INTERVAL: 10'
HOBBS SE, N.M.

SEC. 19 TWP. 20-S RGE. 39-E

SURVEY N.M.P.M.

COUNTY LEA

DESCRIPTION 600' FNL & 500' FEL

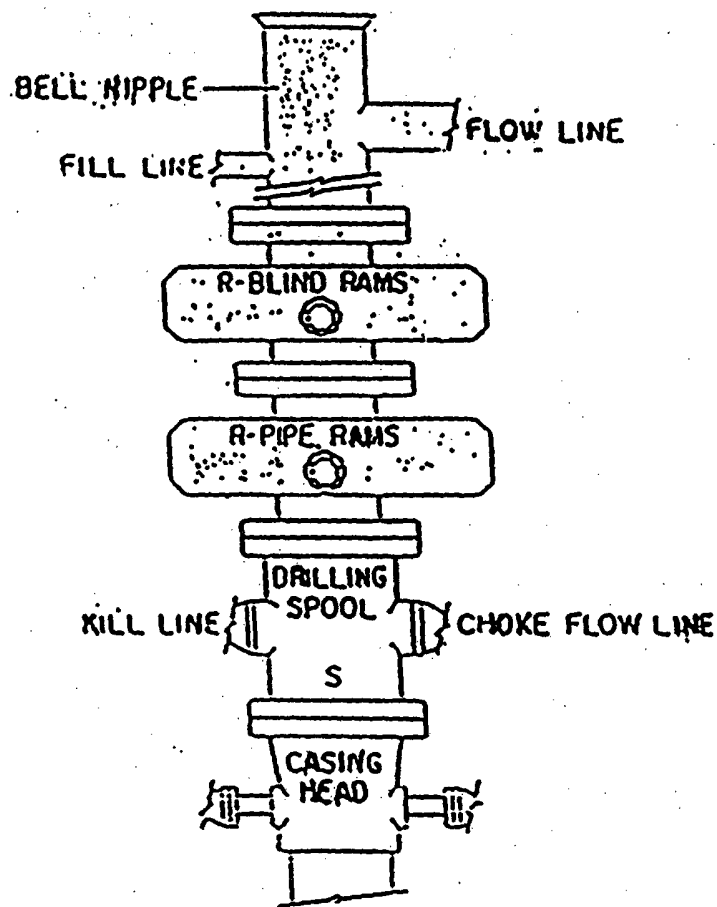
ELEVATION 3527'

OPERATOR XERIC OIL & GAS CORPORATION

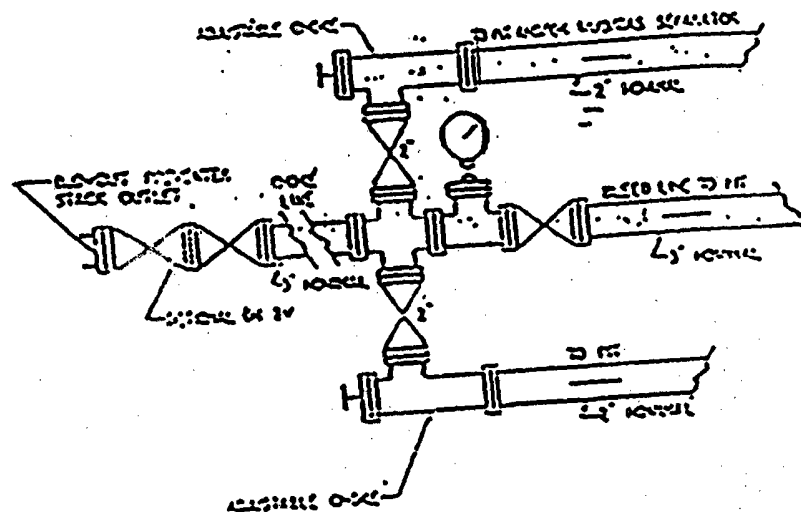
LEASE DUNCAN

U.S.G.S. TOPOGRAPHIC MAP
HOBBS SE, N.M.

JOHN WEST SURVEYING
HOBBS, NEW MEXICO
(505) 393-3117



2000#



PROPOSED BOP' CONFIGUREMENT