

DISTRICT I  
1625 N. French Dr., Hobbs, NM 88240

State of New Mexico  
Energy, Minerals & Natural Resources Department

Form C-102  
Revised October 12, 2005  
Submit to Appropriate District Office  
State Lease - 4 Copies  
Fee Lease - 3 Copies

DISTRICT II  
1301 W. Grand Avenue, Artesia, NM 88210

RECEIVED

OIL CONSERVATION DIVISION  
1220 South St. Frances Dr.  
Santa Fe, NM 87505

DISTRICT III  
1000 Rio Brazos Rd., Aztec, NM 87410

MAY 11 2009

DISTRICT IV  
1220 S. St. Francis Dr., Santa Fe, NM 87505

HOBBSOCD

☐ AMENDED REPORT

WELL LOCATION AND ACREAGE DEDICATION PLAT

API Number 30-025-38974	Pool Code 43329	Pool Name Maljamar Grayburg-San Andres
Property Code 31422	Property Name MCA UNIT	Well Number 401
OGRID No. 217817	Operator Name CONOCOPHILLIPS	Elevation 3977'

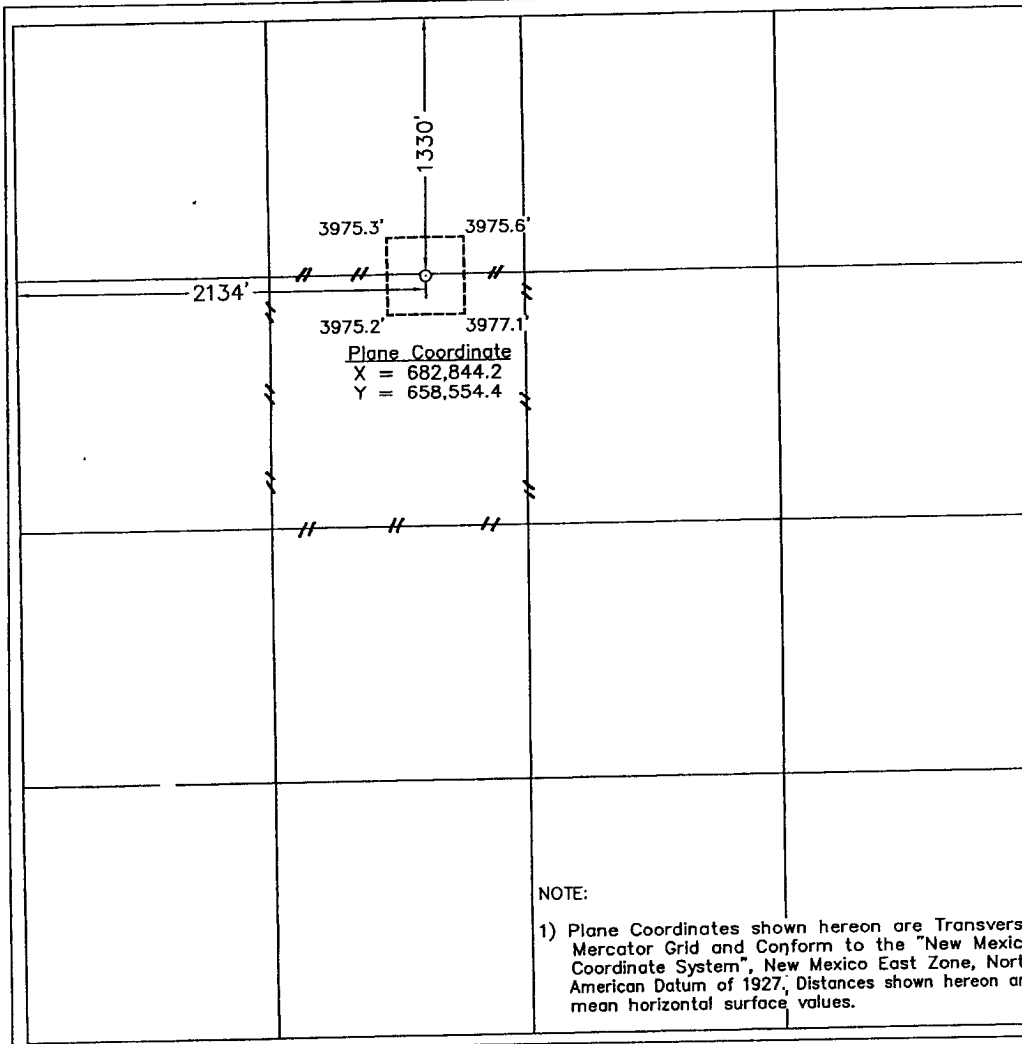
Surface Location

UL or lot No.	Section	Township	Range	Lot Idn	Feet from the	North/South line	Feet from the	East/West line	County
F	26	17 S	32 E		1330	NORTH	2134	WEST	LEA

Bottom Hole Location If Different From Surface

UL or lot No.	Section	Township	Range	Lot Idn	Feet from the	North/South line	Feet from the	East/West line	County
Dedicated Acres 40	Joint or Infill	Consolidation Code	Order No.						

NO ALLOWABLE WILL BE ASSIGNED TO THIS COMPLETION UNTIL ALL INTERESTS HAVE BEEN CONSOLIDATED OR A NON-STANDARD UNIT HAS BEEN APPROVED BY THE DIVISION



NOTE:

- 1) Plane Coordinates shown hereon are Transverse Mercator Grid and Conform to the "New Mexico Coordinate System", New Mexico East Zone, North American Datum of 1927. Distances shown hereon are mean horizontal surface values.

OPERATOR CERTIFICATION

I hereby certify the information contained herein is true and complete to the best of my knowledge and belief, and that this organization either owns a working interest or unleased mineral interest in the land including the proposed bottom hole location or has a right to drill this well at this location pursuant to a contract with an owner of such a mineral or working interest, or to a voluntary pooling agreement or a compulsory pooling order heretofore entered by the division.

JALYN N. FISKE 4/21/09  
Signature Date  
JALYN N. FISKE  
Printed Name

SURVEYOR CERTIFICATION

I hereby certify that the well location shown on this plat was plotted from field notes of actual surveys made by me or under my supervision and that the same is true and correct to the best of my belief

August 23, 2007

Date of Survey LVA  
Signature & Seal of Professional Surveyor

W.O. Num. 2007-0774

Certificate No. MACON McDONALD 12185