

DISTRICT J
1825 N. French Dr., Hobbs, NM 88240

State of New Mexico
Energy, Minerals & Natural Resources Department

Form C-102
Revised August 15, 2000
Submit to Appropriate District Office
State Lease - 4 Copies
Fee Lease - 3 Copies

DISTRICT D
P.O. Drawer DD, Artesia, NM 88211-0719

DISTRICT III
1000 Rio Brazos Rd., Aztec, NM 87410

OIL CONSERVATION DIVISION
2040 South Pacheco
Santa Fe, NM 87505

DISTRICT IV
2040 South Pacheco, Santa Fe, NM 87505

☐ AMENDED REPORT

WELL LOCATION AND ACREAGE DEDICATION PLAT

API Number 30-025- 38089 39187	Pool Code 47090	Pool Name Monument; Tubb
Property Code 31670	Property Name SEMU	Well Number 175
GRID No. 217817	Operator Name CONOCOPHILLIPS	Elevation 3529'

Surface Location

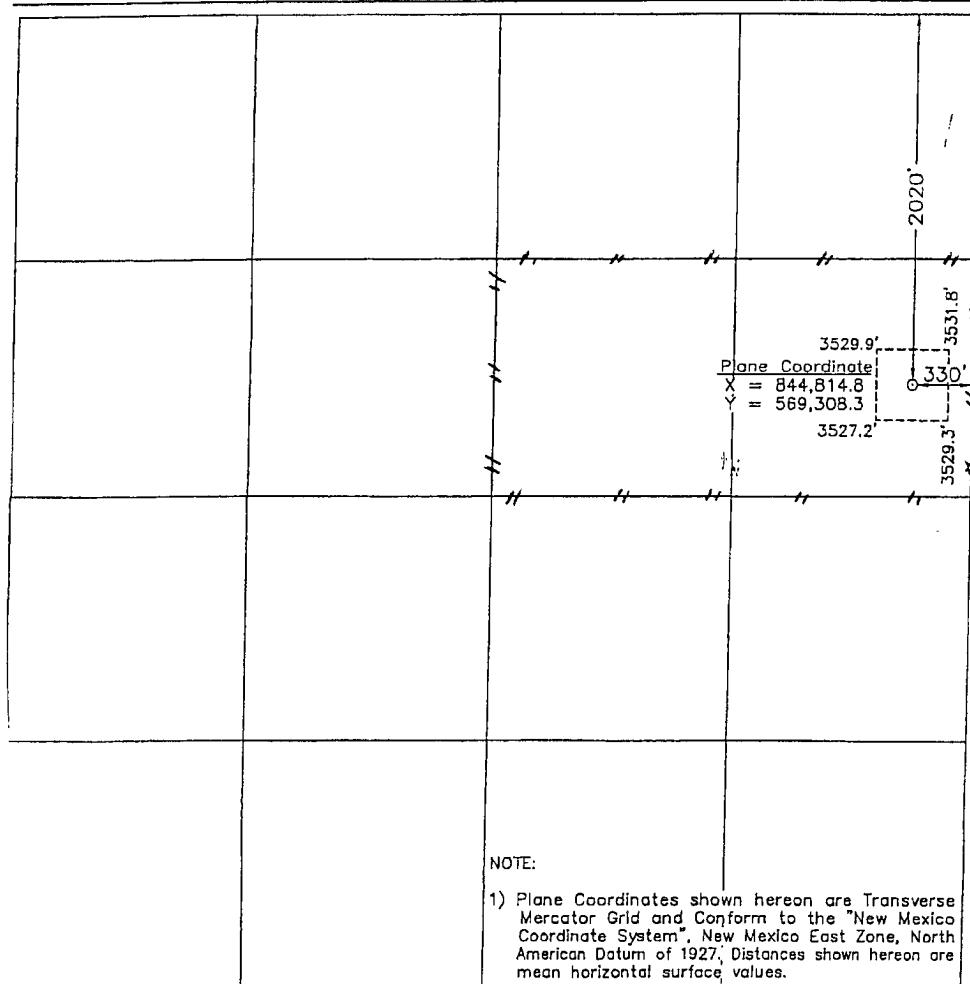
UL or lot No.	Section	Township	Range	Lot Idn	Feet from the	North/South line	Feet from the	East/West line	County
H	23	20 S	37 E		2020	NORTH	330	EAST	LEA

Bottom Hole Location If Different From Surface

UL or lot No.	Section	Township	Range	Lot Idn	Feet from the	North/South line	Feet from the	East/West line	County

Dedicated Acres 80	Joint or Infill	Consolidation Code	Order No.
-----------------------	-----------------	--------------------	-----------

NO ALLOWABLE WILL BE ASSIGNED TO THIS COMPLETION UNTIL ALL INTERESTS HAVE BEEN CONSOLIDATED OR A NON-STANDARD UNIT HAS BEEN APPROVED BY THE DIVISION



NOTE:

1) Plane Coordinates shown hereon are Transverse Mercator Grid and Conform to the "New Mexico Coordinate System", New Mexico East Zone, North American Datum of 1927. Distances shown hereon are mean horizontal surface values.

OPERATOR CERTIFICATION

I hereby certify the the information contained herein is true and complete to the best of my knowledge and belief.

Celeste G. Dale
Signature

Celeste G. Dale
Printed Name

Regulatory Specialist
Title

06/17/08
Date

SURVEYOR CERTIFICATION

I hereby certify that the well location shown on this plat was plotted from field notes of surveys made by me or under my on and that the same is true and correct to the best of my belief.

August 11, 2006

Date Surveyed LVA

Signature & Seal of Professional Surveyor

W.O. Num. 2006-0142-1

Certificate No. MACON McDONALD 12185