

District I
1625 N. French Dr., Hobbs, NM 88240
District II
1301 W. Grand Avenue, Artesia, NM 88210
District III
1000 Rio Brazos Road, Aztec, NM 87410
District IV
1220 S. St. Francis Dr., Santa Fe, NM 87505

State of New Mexico
Energy Minerals and Natural Resources

Oil Conservation Division
1220 South St. Francis Dr.
Santa Fe, NM 87505

Form C-101
Revised March 17, 1999

Submit to appropriate District Office
State Lease - 6 Copies
Fee Lease - 5 Copies

☐ AMENDED REPORT

APPLICATION FOR PERMIT TO DRILL, RE-ENTER, DEEPEN, PLUGBACK, OR ADD A ZONE

¹ Operator Name and Address MARBOB ENERGY CORPORATION PO BOX 227 ARTESIA, NM 88211-0227		² OGRID Number 14049
³ Property Code 31985	⁵ Property Name MAGNUM PRONTO STATE COM	³ API Number 30-025-36157
		⁶ Well No. 1

⁷ Surface Location

UL or lot no.	Section	Township	Range	Lot Idn	Feet from the	North/South line	Feet from the	East/West line	County
D	32	19S	32E		990	NORTH	990	WEST	LEA

⁸ Proposed Bottom Hole Location If Different From Surface

UL or lot no.	Section	Township	Range	Lot Idn	Feet from the	North/South line	Feet from the	East/West line	County
⁹ Proposed Pool 1 LUSK; BONE SPRINGS South					¹⁰ Proposed Pool 2				

¹¹ Work Type Code P	¹² Well Type Code O	¹³ Cable/Rotary R	¹⁴ Lease Type Code S	¹⁵ Ground Level Elevation 3540' GL
¹⁶ Multiple Y	¹⁷ Proposed Depth 12700'	¹⁸ Formation BONE SPRINGS	¹⁹ Contractor	²⁰ Spud Date

EXISTING ²¹ Proposed Casing and Cement Program

Hole Size	Casing Size	Casing weight/foot	Setting Depth	Sacks of Cement	Estimated TOC
17 1/2"	13 3/8"	48#	850'	600 SX	0
12 1/4"	8 5/8"	32#	4428'	2860 SX	0
7 7/8"	5 1/2"	17#	12703'	2150 SX	4000

²² Describe the proposed program. If this application is to DEEPEN or PLUG BACK, give the data on the present productive zone and proposed new productive zone.

Describe the blowout prevention program, if any. Use additional sheets if necessary.

RECOMPLETE IN THE BONE SPRING SANDS AS FOLLOWS:

SET CIBP @ 11250' & DUMP 35' CLASS H CMT ON CIBP. PERF THE 2ND BONE SPRINGS SAND @ 9240'-9278' (20 SHOTS). ACIDIZE W/ 1000 GAL NEFE 7½% HCL ACID. SWAB/FLOW TEST. PERF THE 1ST BONE SPRINGS SAND @ 8398'-8428' (20 SHOTS). ACIDIZE W/ 1000 GAL NEFE 7½% HCL ACID. SWAB/FLOW TEST. PERF THE AVALON SAND @ 7395'-7433' (20 SHOTS). ACIDIZE W/ 1000 GAL NEFE 7½% HCL ACID. SWAB/FLOW TEST.

²³ I hereby certify that the information given above is true and complete to the best of my knowledge and belief.

Signature:

Printed name: DIANA J. CANNON

Title: PRODUCTION ANALYST

Date:

12/22/03

Phone:

(505) 748-3303

OIL CONSERVATION DIVISION

Approved by:

Title:

Approval Date:

Conditions of Approval:

Attached ☐

Expiration Date:

Permit Expires 1 Year From Approval
Date Unless Drilling Underway
Plugback

DEC 24 2003 OIL CONSERVATION DIVISION SUPERVISOR/GENERAL MANAGER

DISTRICT I
P.O. Box 1980, Hobbs, NM 88241-1980

State of New Mexico
Energy, Minerals and Natural Resources Department

Form C-102
Revised February 10, 1994
Submit to Appropriate District Office
State Lease - 4 Copies
Fee Lease - 3 Copies

DISTRICT II
P.O. Drawer DD, Artesia, NM 88211-0719

DISTRICT III
1000 Rio Brazos Rd., Aztec, NM 87410

DISTRICT IV
P.O. BOX 2088, SANTA FE, N.M. 87504-2088

OIL CONSERVATION DIVISION

P.O. Box 2088

Santa Fe, New Mexico 87504-2088

WELL LOCATION AND ACREAGE DEDICATION PLAT

☐ AMENDED REPORT

API Number 30-025-36157	Pool Code 41440 41460	Pool Name LUSK; BONE SPRINGS South
Property Code 31985	Property Name MAGNUM PRONTO ST. COM.	Well Number 1
OGRID No. 14049	Operator Name MARBOB ENERGY CORPORATION	Elevation 3540'

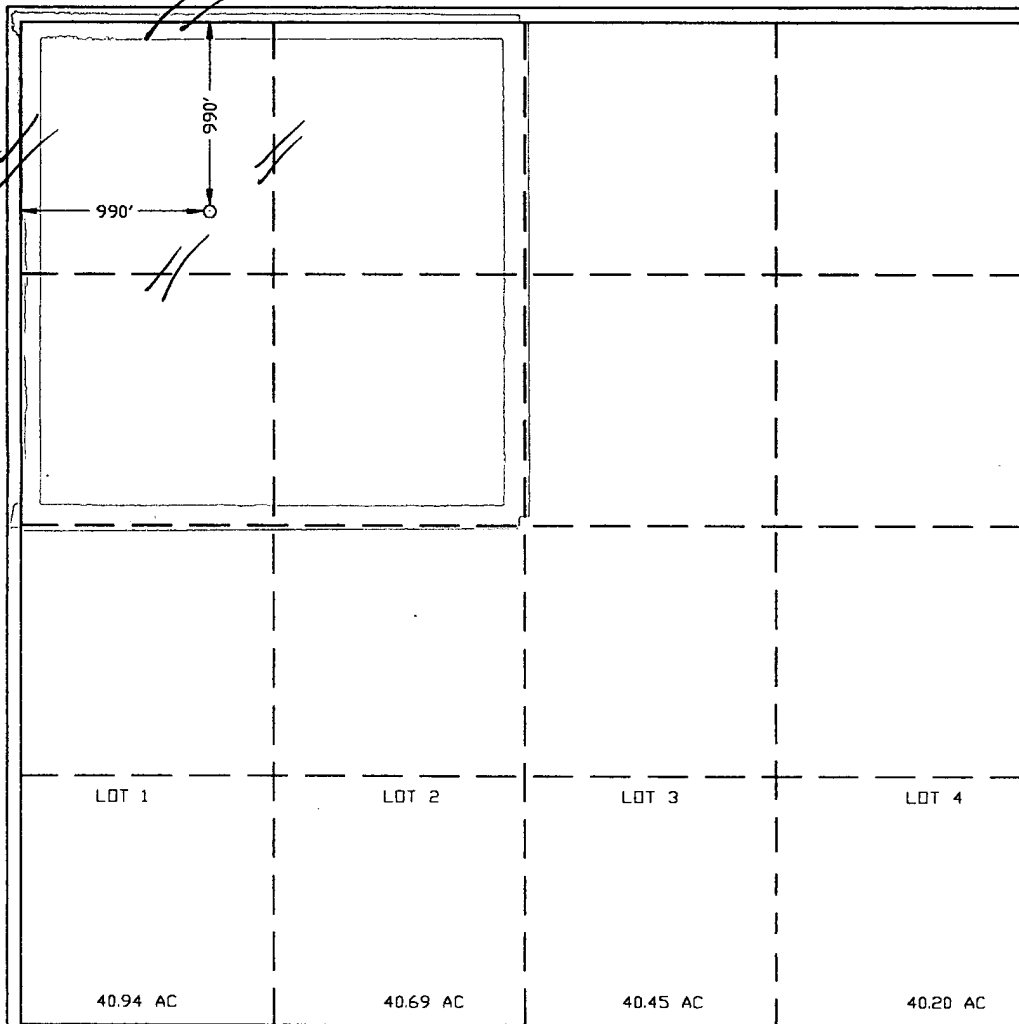
Surface Location

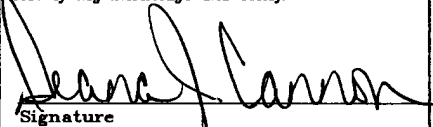
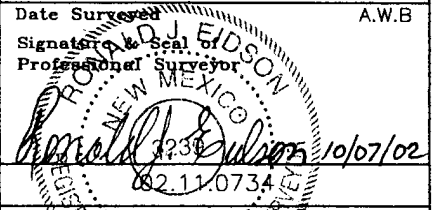
UL or lot No.	Section	Township	Range	Lot Idn	Feet from the	North/South line	Feet from the	East/West line	County
D	32	19-S	32-E		990'	NORTH	990'	WEST	LEA

Bottom Hole Location If Different From Surface

UL or lot No.	Section	Township	Range	Lot Idn	Feet from the	North/South line	Feet from the	East/West line	County
Dedicated Acres 160 40	Joint or Infill	Consolidation Code	Order No.						

NO ALLOWABLE WILL BE ASSIGNED TO THIS COMPLETION UNTIL ALL INTERESTS HAVE BEEN CONSOLIDATED
OR A NON-STANDARD UNIT HAS BEEN APPROVED BY THE DIVISION



OPERATOR CERTIFICATION	
I hereby certify the the information contained herein is true and complete to the best of my knowledge and belief.	
	
Signature	
DIANA J. CANNON	
Printed Name	
PRODUCTION ANALYST	
Title	
DECEMBER 22, 2003	
Date	
SURVEYOR CERTIFICATION	
I hereby certify that the well location shown on this plat was plotted from field notes of actual surveys made by me or under my supervision, and that the same is true and correct to the best of my belief.	
OCTOBER 04, 2002	
Date Surveyed	
A.W.B	
Signature and Seal	
Professional Surveyor	
	
Certificate No. RONALD J. EDSON 3239	
GARY EDSON 12641	