

DISTRICT I
1625 N. French Dr., Hobbs, NM 88240

DISTRICT II
1301 W. Grand Ave., Artesia, NM 88210

DISTRICT III
1000 Rio Brazos Rd., Aztec, NM 87410

DISTRICT IV
1220 St. Francis Dr., Santa Fe, NM 87305

State of New Mexico
Energy, Minerals and Natural Resources Department

Form C-102
Revised October 12, 2005

Submit to Appropriate District Office
State Lease-4 copies
Fee Lease-3 copies

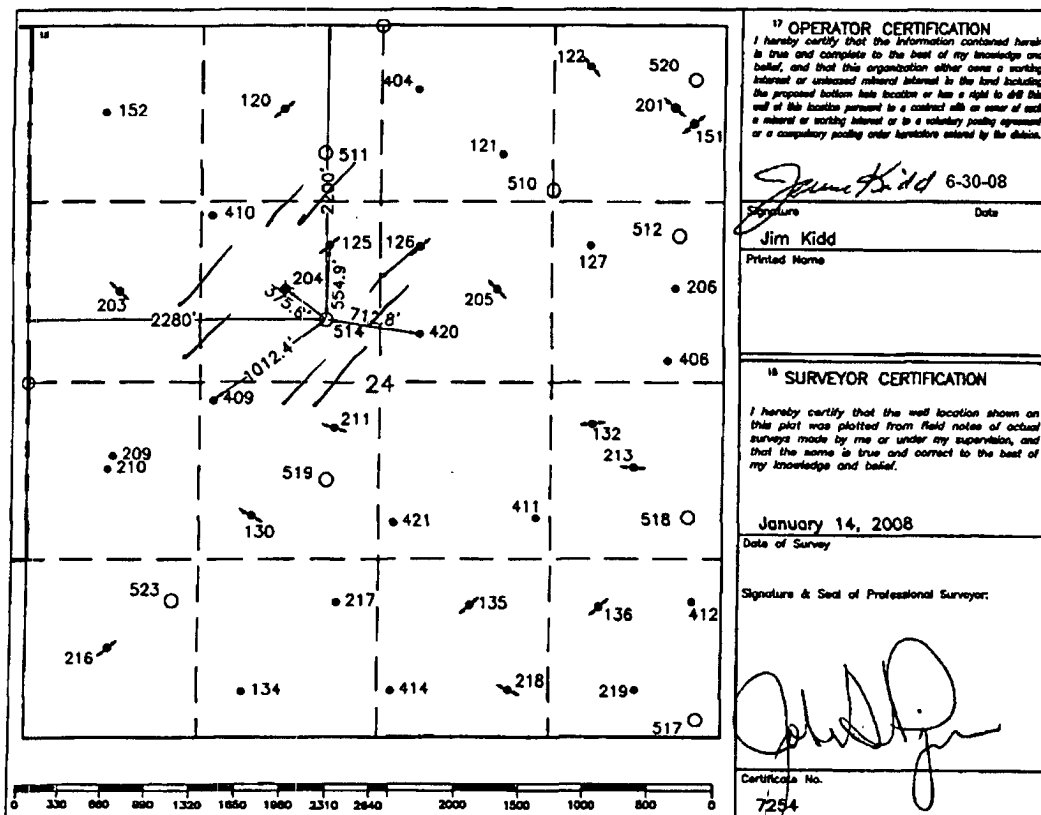
OIL CONSERVATION DIVISION
1220 South St. Francis Drive
Santa Fe, NM 87505

☐ AMENDED REPORT

WELL LOCATION AND ACREAGE DEDICATION PLAT

API Number 30-025-39102		Pool Code 33820/37240		Pool Name Jalmar; Langlie Mattix	
Property Code 306443		Property Name Cooper Jal Unit		Well Number 514	
ACRID No. 193883		Operator Name ROUGH ENERGY SERVICES, INC.		Elevation 3318'	
Surface Location					
UL or lot no. F	Section 24	Township 24-S	Range 36-E	Lot Idn 2200'	Feet from the North/South line North
			Feet from the East/West line West	County Lea	
Bottom Hole Location If Different From Surface					
UL or lot no.	Section	Township	Range	Lot Idn	Feet from the North/South line
			Feet from the East/West line	County	
Dedicated Acres 40		Joint or Infill		Consolidation Code	
Order No.					

NO ALLOWABLE WILL BE ASSIGNED TO THIS COMPLETION UNTIL ALL INTERESTS HAVE BEEN CONSOLIDATED
OR A NON-STANDARD UNIT HAS BEEN APPROVED BY THE DIVISION.



17 OPERATOR CERTIFICATION
I hereby certify that the information contained herein is true and complete to the best of my knowledge and belief, and that this organization either owns a working interest or undivided mineral interest in the land including the proposed bottom hole location or has a right to drill this well at this location pursuant to a contract with or some of such a mineral or working interest or to a voluntary pooling agreement or a compulsory pooling order heretofore entered by the division.

Jim Kidd 6-30-08
Signature Date

Jim Kidd
Printed Name

18 SURVEYOR CERTIFICATION

I hereby certify that the well location shown on this plat was plotted from field notes of actual surveys made by me or under my supervision, and that the same is true and correct to the best of my knowledge and belief.

January 14, 2008
Date of Survey

Signature and Seal of Professional Surveyor:

John H. H. H.
Certificate No. 7254

○ = Staked Location • = Producing Well ● = Injection Well ◇ = Water Supply Well ◆ = Plugged & Abandon Well
⊙ = Found Section Corner, 2 or 3" Iron Pipe & GLO B.C. ○ = Found 1/4 Section Corner, 1" Iron Pipe & GLO B.C.

ADDITIONAL INFORMATION ON THE LOCATION

State Plane Coordinates			
Northing 439772.83 (1927= 439713.98)		Easting 885694.87 (1927= 844508.22)	
Latitude 32°12'14.799"		Longitude 103°13'12.063"	
Zone	North American Datum	Combined Grid Factor	Coordinate File
East	1983/86	0.99988635	Coop_Jal.Crd
Drawing File		Field Book	
Coop_Jal.Dwg		Lea #24, Pg. 24	