

District I
1625 N. French Dr., Hobbs, NM 88240
District II
1301 W. Grand Avenue, Artesia, NM 88210
District III
1000 Rio Brazos Rd., Aztec, NM 87410
District IV
1220 S. St. Francis Dr., Santa Fe, NM 87505

State of New Mexico
Energy, Minerals & Natural Resources
RECEIVED
JUN 05 2009
HOBBSOCD
OIL CONSERVATION DIVISION
1220 South St. Francis Dr.
Santa Fe, NM 87505

Form C-102
Revised October 12, 2005

Submit to Appropriate District Office
State Lease - 4 Copies
Fee Lease - 3 Copies

☐ AMENDED REPORT

WELL LOCATION AND ACREAGE DEDICATION PLAT

¹ API Number 30-025-03732	² Pool Code 40875	³ Pool Name Lovington: Strawn, West
⁴ Property Code 27820	⁵ Property Name West Lovington Strawn Unit	⁶ Well Number 25
⁷ OGRID No. 162928	⁸ Operator Name Energen Resources Corporation	⁹ Elevation 3956'

¹⁰ Surface Location

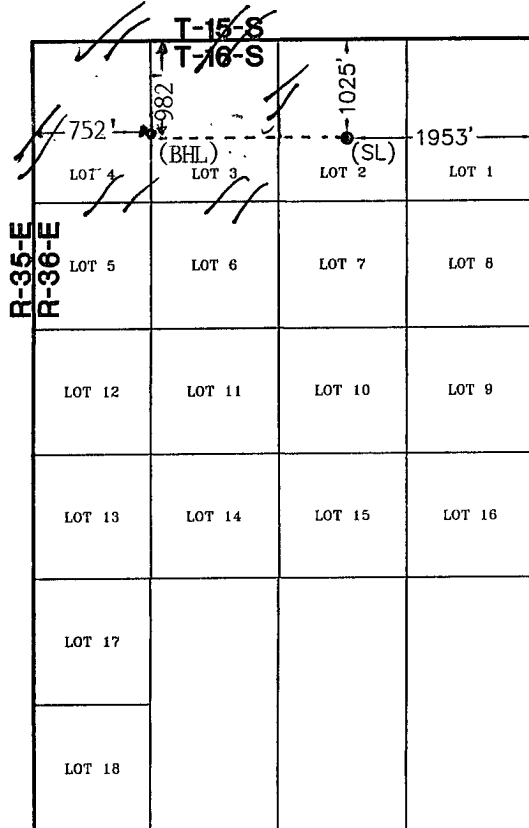
UL or lot no	Section	Township	Range	Lot. Idn	Feet from the	North/South line	Feet from the	East/West line	County
2	6	16 S	36 E		1025'	North	1953'	East	Lea

¹¹ Bottom Hole Location If Different From Surface

UL or lot no	Section	Township	Range	Lot. Idn	Feet from the	North/South line	Feet from the	East/West line	County
4	6	16 S	36 E		1014' 982'	North	4447' 755'	West	Lea
¹² Dedicated Acres 80 148.53	¹³ Joint or Infill	¹⁴ Consolidation Code	¹⁵ Order No.						

NO ALLOWABLE WILL BE ASSIGNED TO THIS COMPLETION UNTIL ALL INTERESTS HAVE BEEN CONSOLIDATED OR A NON-STANDARD UNIT HAS BEEN APPROVED BY THE DIVISION

16



Surface Location
Plane Coordinate
X = 788,859.2
Y = 715,589.8
Geodetic Coordinate
Lat. 32°57'49.24" N
Long. 103°23'29.57" W
(NAD '27)

¹⁷ OPERATOR CERTIFICATION

I hereby certify that the information contained herein is true and complete to the best of my knowledge and belief, and that this organization either owns a working interest or unleased mineral interest in the land including the proposed bottom hole location or has a right to drill this well at this location pursuant to a contract with an owner of such a mineral or working interest, or to a voluntary pooling agreement or a compulsory pooling order heretofore entered by the division.

Signature *Tracie J Cherry* Date 06-03-09

Printed Name
Tracie J Cherry

¹⁸ SURVEYOR CERTIFICATION

I hereby certify that the well location shown on this plat was plotted from field notes of actual surveys made by me or under my supervision, and that the same is true and correct to the best of my belief

Date of Survey
Signature and Seal of Professional Surveyer

Certificate Number