

District I  
1625 N. French Dr., Hobbs, NM 88240  
District II  
1301 W. Grand Avenue, Artesia, NM 88210  
District III  
1000 Rio Brazos Road, Aztec, NM 87410  
District IV  
1220 S. St. Francis Dr., Santa Fe, NM 87505

State of New Mexico  
**RECEIVED**  
Oil Conservation Division  
220 South St. Francis Dr.  
Santa Fe, NM 87505  
**HOBBS**

Form C-101  
June 16, 2008

Submit to appropriate District Office

☐ AMENDED REPORT

**APPLICATION FOR PERMIT TO DRILL, RE-ENTER, DEEPEN, PLUGBACK, OR ADD A ZONE**

<sup>1</sup> Operator Name and Address VANGUARD PERMIAN, LLC. 7700 SAN FELIPE SUITE 485 HOUSTON, TEXAS 77063		<sup>2</sup> OGRID Number 258350 <sup>3</sup> API Number 30-025-03784
<sup>4</sup> Property Code 306133	<sup>5</sup> Property Name SKELLY "Q" STATE	<sup>6</sup> Well No. # 4
<sup>7</sup> Proposed Pool 1 LOVINGTON QUEEN-NORTH (40780)		<sup>8</sup> Proposed Pool 2

**7 Surface Location**

UL or lot no.	Section	Township	Range	Lot Idn	Feet from the	North/South line	Feet from the	East/West line	County
0	36	16S	36E		330'	SOUTH	1650'	EAST	LEA

**8 Proposed Bottom Hole Location If Different From Surface**

UL or lot no.	Section	Township	Range	Lot Idn	Feet from the	North/South line	Feet from the	East/West line	County
---------------	---------	----------	-------	---------	---------------	------------------	---------------	----------------	--------

**Additional Well Information**

<sup>9</sup> Work Type Code P	<sup>10</sup> Well Type Code O	<sup>11</sup> Cable/Rotary Well service unit	<sup>12</sup> Lease Type Code S	<sup>13</sup> Ground Level Elevation 3825 GL
<sup>14</sup> Multiple NO	<sup>15</sup> Proposed Depth 104200±'	<sup>16</sup> Formation QUEEN	Key	<sup>17</sup> Contractor When Approved

**21 Proposed Casing and Cement Program**

Hole Size	Casing Size	Casing weight/foot	Setting Depth	Sacks of Cement	Estimated TOC
18"	13 3/8"	44.5 & 36#	265'	265 Sx.	Surface
12 1/2"	8 5/8"	32 & 24#	3343'	600 Sx.	Surface
7 7/8"	5 1/2"	17#	8435'	800 Sx.	Est. 3300' FS

<sup>22</sup> Describe the proposed program. If this application is to DEEPEN or PLUG BACK, give the data on the present productive zone and proposed new productive zone. Describe the blowout prevention program, if any. Use additional sheets if necessary.

SEE ATTACHED SHEET FOR DETAIL

**Permit Expires 2 Years From Approval  
Date Unless Drilling Underway  
Plugback**

<sup>23</sup> I hereby certify that the information given above is true and complete to the best of my knowledge and belief.		OIL CONSERVATION DIVISION	
Signature: <i>Joe T. Janica</i>		Approved by: <i>[Signature]</i>	
Printed name: Joe T. Janica		Title: PETROLEUM ENGINEER	
Title: Permit Eng.		Approval Date:	Expiration Date:
E-mail Address: joejanica@valornet.com		JUN 17 2009	
Date: 06/10/09	Phone: 575-391-8503	Conditions of Approval Attached <input type="checkbox"/>	



## SKELLY Q STATE #4

### Recompletion Procedure

#### Queen Formation

Surface Casing: 8-5/8", 24 & 32 lb/ft, J-55, @ 3343'. Cir Cement.

Production Casing: 5-1/2", 17 lb/ft, J-55 & N-80, @ 8424'. TOC @ approx. base of 8-5/8" csg.

1. MIRU wireline services. Tag top of fish and set CIBP above it. Pressure test CIBP and casing with 1000 #s. Run GR/CNL. RD wireline. Send log to Houston to determine top and base of Queen formation, and pick perforations.
2. MIRU wireline services. Perforate as recommended by engineer. RD wireline services.
3. RIH with 5-1/2" packer and 3-1/2" workstring. Set 5-1/2 packer above perforations.
4. RU pumping services and spot acid using ball sealers to break down perforations with 500 gals 15% HCl NEFE acid. Sand frac formation with 40,000 #s of white sand. RD Pumping services.
5. Flow or swab.
6. POOH with workstring and packer. RIH with tubing, pump and rods.
7. Install pumping unit. Test well for production.

Approximate top of Queen 3900'

Approximate base of Queen 4200'

Top of fish 4422'

Approximate interval of perforations 3950-3980'

A manually operated 3000# B.O.P. will be used during this re-completion operation.

District I  
1625 N. French Dr., Hobbs, NM 88240  
District II  
1301 W. Grand Avenue, Artesia, NM 88210  
District III  
1000 Rio Brazos Rd., Aztec, NM 87410  
District IV  
1220 S. St. Francis Dr., Santa Fe, NM 87505

State of New Mexico  
Energy, Minerals & Natural Resources Department  
OIL CONSERVATION DIVISION  
1220 South St. Francis Dr.  
Santa Fe, NM 87505

Form C-102  
Revised October 12, 2005  
Submit to Appropriate District Office  
State Lease - 4 Copies  
Fee Lease - 3 Copies

☐ AMENDED REPORT

WELL LOCATION AND ACREAGE DEDICATION PLAT

<sup>1</sup> API Number 30-025-03784		<sup>2</sup> Pool Code 40780		<sup>3</sup> Pool Name LOVINGTON QUEEN-NORTH	
<sup>4</sup> Property Code 306133		<sup>5</sup> Property Name SKELLY "Q" STATE			<sup>6</sup> Well Number # 4
<sup>7</sup> OGRID No. 258350		<sup>8</sup> Operator Name VANGUARD PERMIAN, LLC.			<sup>9</sup> Elevation 3825 GL

<sup>10</sup> Surface Location

UL or lot no.	Section	Township	Range	Lot Idn	Feet from the	North/South line	Feet from the	East/West line	County
0	36	16S	36E		330'	SOUTH	1650'	EAST	LEA

<sup>11</sup> Bottom Hole Location If Different From Surface

UL or lot no.	Section	Township	Range	Lot Idn	Feet from the	North/South line	Feet from the	East/West line	County

<sup>12</sup> Dedicated Acres 40	<sup>13</sup> Joint or Infill	<sup>14</sup> Consolidation Code	<sup>15</sup> Order No.
-------------------------------------	-------------------------------	----------------------------------	-------------------------

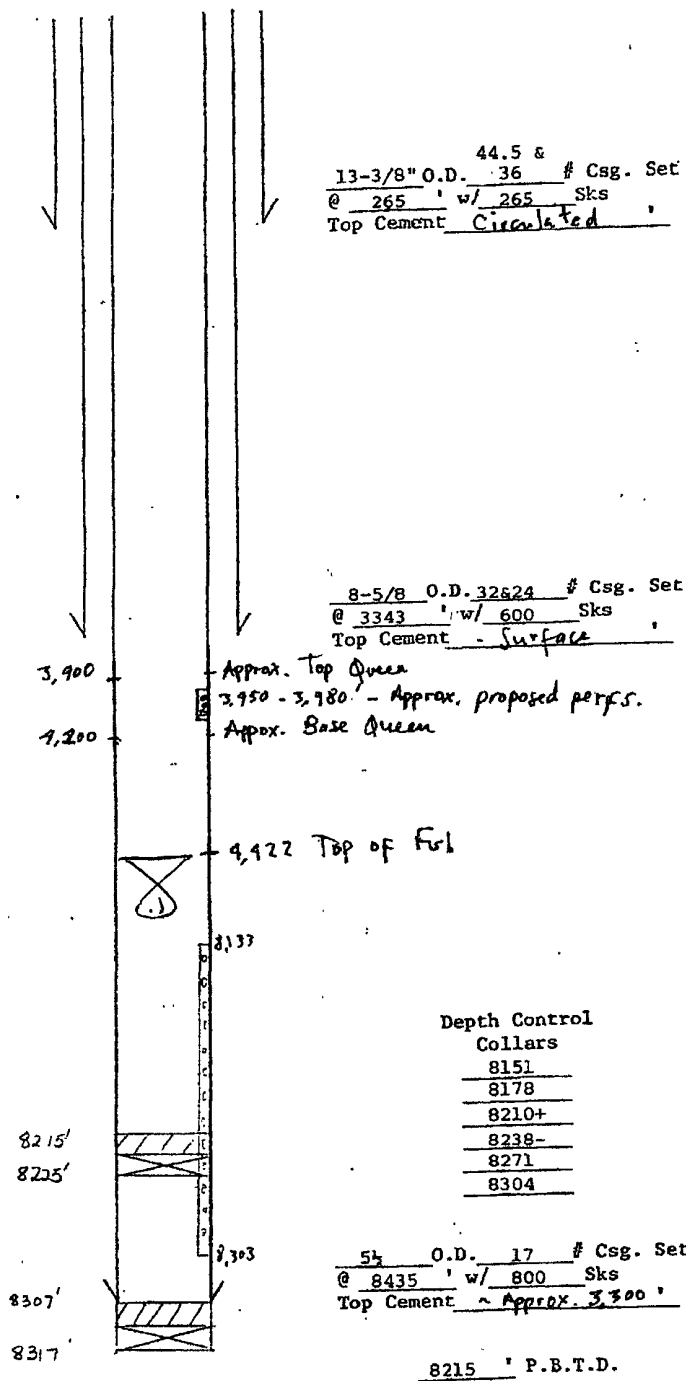
No allowable will be assigned to this completion until all interests have been consolidated or a non-standard unit has been approved by the division.

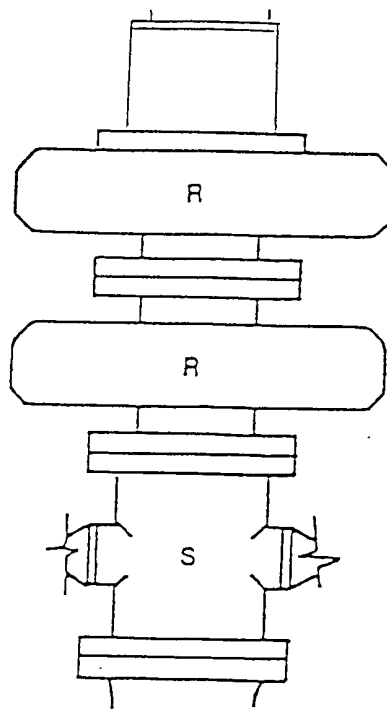
16				<p><sup>17</sup> OPERATOR CERTIFICATION</p> <p><i>I hereby certify that the information contained herein is true and complete to the best of my knowledge and belief, and that this organization either owns a working interest or unleased mineral interest in the land including the proposed bottom hole location or has a right to drill this well at this location pursuant to a contract with an owner of such a mineral or working interest, or to a voluntary pooling agreement or a compulsory pooling order heretofore entered by the division.</i></p> <p><i>Joe T. Janica</i> Signature Date Joe T. Janica 06/10/09 Printed Name</p>
				<p><sup>18</sup> SURVEYOR CERTIFICATION</p> <p><i>I hereby certify that the well location shown on this plat was plotted from field notes of actual surveys made by me or under my supervision, and that the same is true and correct to the best of my belief.</i></p> <p>Date of Survey Signature and Seal of Professional Surveyor:  Certificate Number</p>

# 4  
○

# Skelly State #4

Elevation: DF 3838'  
GL 3825'  
Zero Point 3838'





Casinghead