

District I
1625 N. French Dr., Hobbs, NM 88240
Phone:(505) 393-6161 Fax:(505) 393-0720

State of New Mexico
Energy, Minerals and Natural Resources
Oil Conservation Division
1220 S. St Francis Dr.
Santa Fe, NM 87505

Form C-101
Permit 97324

APPLICATION FOR PERMIT TO DRILL, RE-ENTER, DEEPEN, PLUGBACK, OR ADD A ZONE

| | | |
|--|--------------------------------|----------------------------|
| 1. Operator Name and Address APACHE CORP 6120 S. YALE TULSA, OK 74136 | | 2. OGRID Number 873 |
| | | 3. API Number 025-38447 |
| 4. Property Code 23108 | 5. Property Name LIVINGSTON | 6. Well No. 025 |

7. Surface Location

| | | | | | | | | | |
|-----------------|--------------|-----------------|--------------|----------------|-------------------|---------------|------------------|---------------|---------------|
| UL - Lot P/H | Section 4 | Township 21S | Range 37E | Lot Idn 11b | Feet From 3630 | N/S Line S | Feet From 990 | E/W Line E | County LEA |
|-----------------|--------------|-----------------|--------------|----------------|-------------------|---------------|------------------|---------------|---------------|

8. Pool Information

| | |
|-------------------------|-------|
| PENROSE SKELLY;GRAYBURG | 50350 |
|-------------------------|-------|

Additional Well Information

| | | | | |
|---|----------------------------|--|---------------------------|------------------------------------|
| 9. Work Type New Well | 10. Well Type OIL | 11. Cable/Rotary | 12. Lease Type Private | 13. Ground Level Elevation 3436 |
| 14. Multiple N | 15. Proposed Depth 4500 | 16. Formation Grayburg | 17. Contractor | 18. Spud Date 6/21/2009 |
| Depth to Ground water | | Distance from nearest fresh water well | | Distance to nearest surface water |
| Pit Liner: Synthetic <input type="checkbox"/> mils thick Clay <input type="checkbox"/> Pit Volume: bbls Drilling Method: Closed Loop System <input type="checkbox"/> Fresh Water <input checked="" type="checkbox"/> Brine <input type="checkbox"/> Diesel/Oil-based <input type="checkbox"/> Gas/Air <input type="checkbox"/> | | | | |

19. Proposed Casing and Cement Program

| Type | Hole Size | Casing Type | Casing Weight/ft | Setting Depth | Sacks of Cement | Estimated TOC |
|------|-----------|-------------|------------------|---------------|-----------------|---------------|
| Surf | 12.25 | 8.625 | 24 | 1300 | 650 | 0 |
| Prod | 7.875 | 5.5 | 17 | 4500 | 950 | 0 |

Casing/Cement Program: Additional Comments

| |
|--|
| |
|--|

Proposed Blowout Prevention Program

| Type | Working Pressure | Test Pressure | Manufacturer |
|-----------|------------------|---------------|--------------|
| DoubleRam | 3000 | 2000 | |

I hereby certify that the information given above is true and complete to the best of my knowledge and belief.
I further certify that the drilling pit will be constructed according to NMOCD guidelines ☐ a general permit ☐ or an (attached) alternative OCD-approved plan ☐.

Printed Name: Electronically filed by Lana Williams

Title: Engineering Tech

Email Address: lana.williams@apachecorp.com

Date: 6/18/2009

Phone: 918-491-4900

OIL CONSERVATION DIVISION

Approved By:

Title:

Approved Date:

Expiration Date:

District I

1625 N. French Dr., Hobbs, NM 88240
Phone:(505) 393-6161 Fax:(505) 393-0720

District II

1301 W. Grand Ave , Artesia, NM 88210
Phone.(505) 748-1283 Fax:(505) 748-9720

District III

1000 Rio Brazos Rd., Aztec, NM 87410
Phone (505) 334-6178 Fax:(505) 334-6170

District IV

1220 S. St Francis Dr., Santa Fe, NM 87505
Phone (505) 476-3470 Fax.(505) 476-3462

State of New Mexico
Energy, Minerals and Natural Resources

Oil Conservation Division**1220 S. St Francis Dr.****Santa Fe, NM 87505**

Form C-102
Permit 97324

WELL LOCATION AND ACREAGE DEDICATION PLAT

| | | |
|--------------------------|---------------------------------|--|
| 1. API Number | 2 Pool Code 50350 | 3 Pool Name PENROSE SKELLY;GRAYBURG |
| 4 Property Code 23108 | 5. Property Name LIVINGSTON | 6. Well No 025 |
| 7. OGRID No. 873 | 8. Operator Name APACHE CORP | 9. Elevation 3436 |

10. Surface Location

| | | | | | | | | | |
|-----------------------|--------------|-----------------|--------------|---------------|-------------------|---------------|------------------|---------------|---------------|
| UL - Lot PH | Section 4 | Township 21S | Range 37E | Lot Idn 16 | Feet From 3630 | N/S Line S | Feet From 990 | E/W Line E | County LEA |
|-----------------------|--------------|-----------------|--------------|---------------|-------------------|---------------|------------------|---------------|---------------|

11. Bottom Hole Location If Different From Surface

| | | | | | | | | | |
|------------------------------|---------------------|------------------------|---------------|---------|-----------|----------|-----------|----------|--------|
| UL - Lot | Section | Township | Range | Lot Idn | Feet From | N/S Line | Feet From | E/W Line | County |
| 12. Dedicated Acres 40.00 | 13. Joint or Infill | 14. Consolidation Code | 15. Order No. | | | | | | |

NO ALLOWABLE WILL BE ASSIGNED TO THIS COMPLETION UNTIL ALL INTERESTS HAVE BEEN CONSOLIDATED OR A NON-STANDARD UNIT HAS BEEN APPROVED BY THE DIVISION

| | |
|--|--|
| | OPERATOR CERTIFICATION |
| | <p><i>I hereby certify that the information contained herein is true and complete to the best of my knowledge and belief, and that this organization either owns a working interest or unleased mineral interest in the land including the proposed bottom hole location(s) or has a right to drill this well at this location pursuant to a contract with an owner of such a mineral or working interest, or to a voluntary pooling agreement or a compulsory pooling order heretofore entered by the division.</i></p> <p>E-Signed By: Lana Williams Title: Engineering Tech Date: 6/18/2009</p> |
| | SURVEYOR CERTIFICATION |
| | <p><i>I hereby certify that the well location shown on this plat was plotted from field notes of actual surveys made by me or under my supervision, and that the same is true and correct to the best of my belief.</i></p> <p>Surveyed By: Ronald Eidson Date of Survey: 12/13/2007 Certificate Number: 3239</p> |

RECEIVED

10x

DISTRICT I
1626 N. FRENCH DR., HOBBS, NM 88240

JUN 15 2009

State of New Mexico
Energy, Minerals and Natural Resources Department

Form C-102

Revised October 12, 2005

Submit to Appropriate District Office

State Lease - 4 Copies

Fee Lease - 3 Copies

DISTRICT II
1301 W. GRAND AVENUE, ARTESIA, NM 88210

HOBBS

CONSERVATION DIVISION

1220 SOUTH ST. FRANCIS DR.
Santa Fe, New Mexico 87505

DISTRICT III
1000 Rio Brazos Rd., Aztec, NM 87410

DISTRICT IV
1220 S. ST. FRANCIS DR., SANTA FE, NM 87505

WELL LOCATION AND ACREAGE DEDICATION PLAT

☐ AMENDED REPORT

| | | |
|-----------------------------------|--|--|
| API Number 30-025-39447 | Pool Code 50350 | Pool Name Petrase Skelly Grayburg Pool |
| Property Code 23108 | Property Name LIVINGSTON | Well Number 25 |
| GRID No. 873 | Operator Name APACHE CORPORATION | Elevation 3436' |

Surface Location

| UL or lot No. | Section | Township | Range | Lot Idn | Feet from the | North/South line | Feet from the | East/West line | County |
|---------------|---------|----------|-------|---------|---------------|------------------|---------------|----------------|--------|
| 16 | 4 | 21-S | 37-E | | 3630 | SOUTH | 990 | EAST | LEA |

Bottom Hole Location If Different From Surface

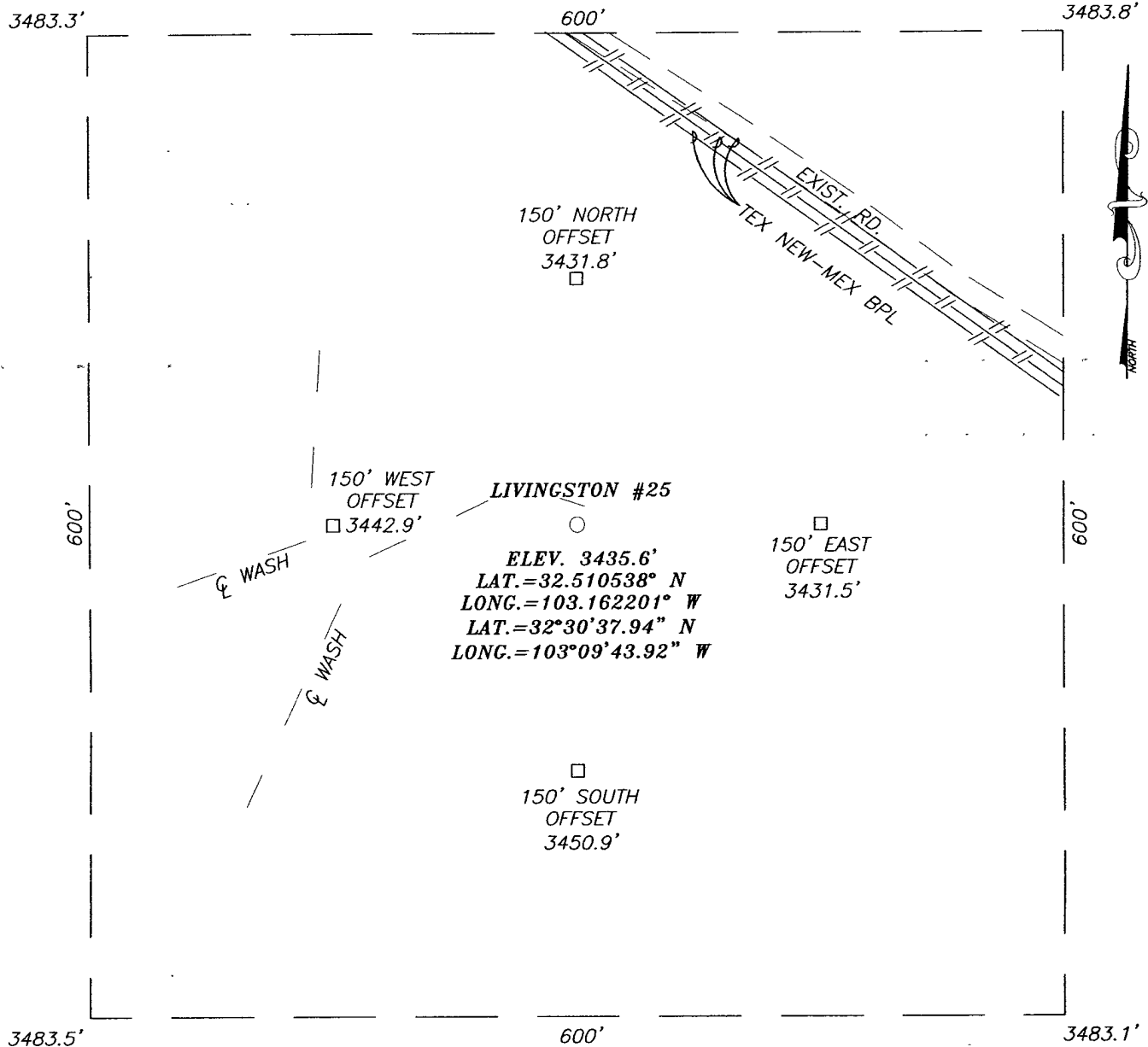
| UL or lot No. | Section | Township | Range | Lot Idn | Feet from the | North/South line | Feet from the | East/West line | County |
|------------------------------|-----------------|--------------------|-----------|---------|---------------|------------------|---------------|----------------|--------|
| | | | | | | | | | |
| Dedicated Acres 40 | Joint or Infill | Consolidation Code | Order No. | | | | | | |

NO ALLOWABLE WILL BE ASSIGNED TO THIS COMPLETION UNTIL ALL INTERESTS HAVE BEEN CONSOLIDATED
OR A NON-STANDARD UNIT HAS BEEN APPROVED BY THE DIVISION

| | | | | | |
|---|---|---|--|--|--|
| <p>LOT 4</p> <p>37.85 AC. LOT 5</p> <p>40 AC. LOT 12</p> <p>40 AC. LOT 13</p> <p>40 AC.</p> | <p>LOT 3</p> <p>37.87 AC. LOT 6</p> <p>40 AC. LOT 11</p> <p>40 AC. LOT 14</p> <p>40 AC.</p> | <p>LOT 2</p> <p>37.89 AC. LOT 7</p> <p>40 AC. LOT 10</p> <p>40 AC. LOT 15</p> <p>40 AC.</p> | <p>LOT 1</p> <p>37.91 AC. LOT 8</p> <p>40 AC. LOT 9</p> <p>40 AC. LOT 16</p> <p>40 AC.</p> | <p>Diagram showing well location and acreage. A well is located 990' from the south line and 3630' from the east line. A scale bar indicates 1"=2000'.</p> | <p>OPERATOR CERTIFICATION</p> <p>I hereby certify that the information herein is true and complete to the best of my knowledge and belief, and that this organization either owns a working interest or unleased mineral interest in the land including the proposed bottom hole location or has a right to drill this well at this location pursuant to a contract with an owner of such mineral or working interest, or to a voluntary pooling agreement or a compulsory pooling order heretofore entered by the division.</p> <p><i>[Signature]</i> 9/13/09 Signature Date SAM HAMPTON Printed Name</p> <p>SURVEYOR CERTIFICATION</p> <p>I hereby certify that the well location shown on this plat was plotted from field notes of actual surveys made by me or under my supervision, and that the same is true and correct to the best of my belief.</p> <p>DECEMBER 15 2007 Date Surveyed NEW MEXICO DSS Signature & Seal of Professional Surveyor 3239 <i>[Signature]</i> 07/11/08 Certificate No. GARY EIDSON 12841 RONALD J. EIDSON 3239</p> |
|---|---|---|--|--|--|

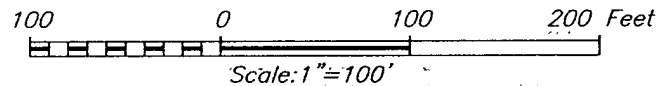
SCALE: 1"=2000'
GEODETIC COORDINATES
NAD 27 NME
Y=551429.6 N
X=861029.4 E
LAT.=32.510538° N
LONG.=103.162201° W
LAT.=32°30'37.94" N
LONG.=103°09'43.92" W

SECTION 4, TOWNSHIP 21 SOUTH, RANGE 37 EAST, N.M.P.M.,
 LEA COUNTY, NEW MEXICO



DIRECTIONS TO LOCATION

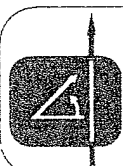
FROM THE INTERSECTION OF STATE HIGHWAY
 207 AND COUNTY ROAD E-34 (DECK ROAD),
 GO NORTHEAST ON STATE HIGHWAY 207
 APPROX. 0.1 MILE. TURN LEFT AND GO
 NORTHWEST APPROX. 1.0 MILE. THIS
 LOCATION IS APPROX. 250 FEET SOUTHWEST.



APACHE CORPORATION

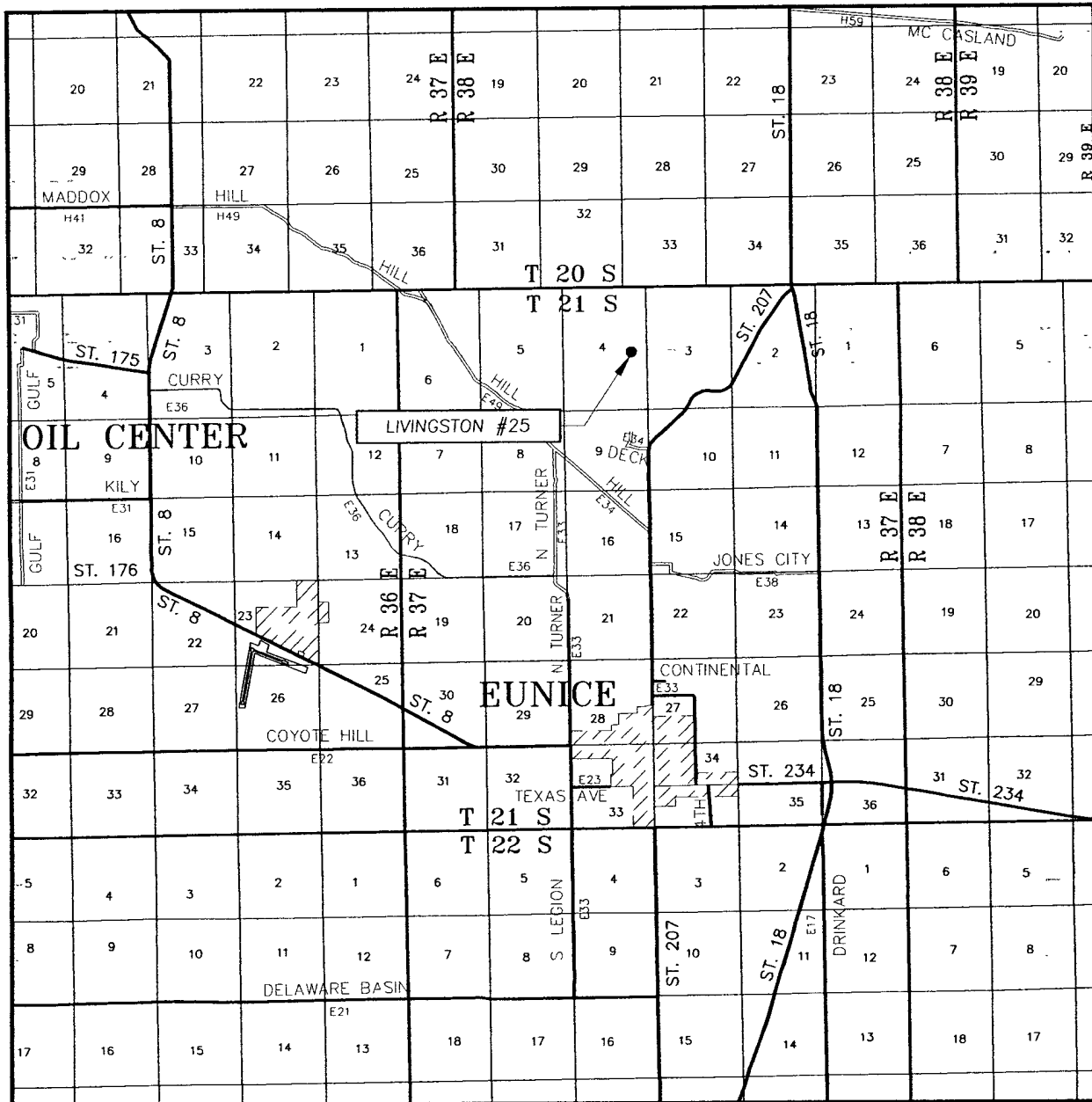
LIVINGSTON #25 WELL
 LOCATED 3630 FEET FROM THE SOUTH LINE
 AND 990 FEET FROM THE EAST LINE OF SECTION 4,
 TOWNSHIP 21 SOUTH, RANGE 37 EAST, N.M.P.M.,
 LEA COUNTY, NEW MEXICO.

| | | | |
|-------------------------|---------|---------------------|----------------|
| Survey Date: 12/13/07 | | Sheet 1 of 1 Sheets | |
| W.O. Number: 07.11.1757 | | Dr By: DSS | Rev 1: |
| Date: 1/02/08 | Disk: . | 07111757 | Scale: 1"=100' |



PROVIDING SURVEYING SERVICES
 SINCE 1946
JOHN WEST SURVEYING COMPANY
 412 N. DAL PASO
 HOBBS, N.M. 88240
 (505) 393-3117

VICINITY MAP



SCALE: 1" = 2 MILES

SEC. 4 TWP. 21-S RGE. 37-E

SURVEY N.M.P.M.

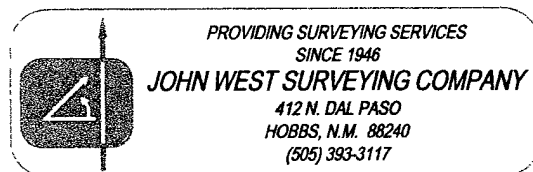
COUNTY LEA STATE NEW MEXICO

DESCRIPTION 3630' FSL & 990' FEL

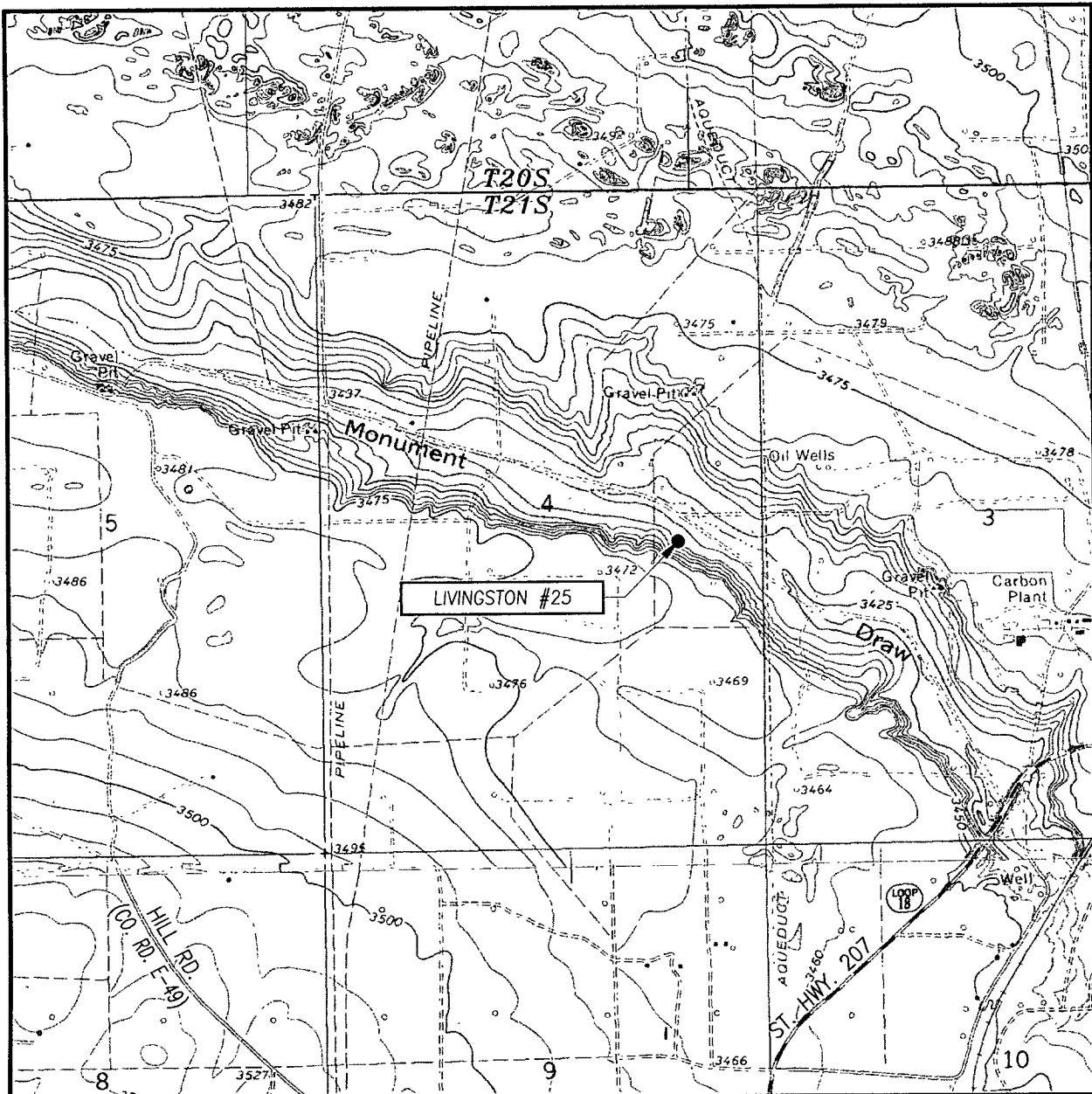
ELEVATION 3436'

OPERATOR APACHE CORPORATION

LEASE LIVINGSTON



LOCATION VERIFICATION MAP



SCALE: 1" = 2000'

CONTOUR INTERVAL:
HOBBS SW, N.M. - 5'
EUNICE, N.M. - 10'

SEC. 4 TWP. 21-S RGE. 37-E

SURVEY N.M.P.M.

COUNTY LEA STATE NEW MEXICO

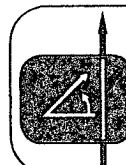
DESCRIPTION 3630' FSL & 990' FEL

ELEVATION 3436'

OPERATOR APACHE CORPORATION

LEASE LIVINGSTON

U.S.G.S. TOPOGRAPHIC MAP
HOBBS SW, N.M.



PROVIDING SURVEYING SERVICES
SINCE 1946
JOHN WEST SURVEYING COMPANY
412 N. DAL PASO
HOBBS, N.M. 88240
(505) 393-3117