

Submit 3 Copies To Appropriate District
Office
District I
1625 N French Dr., Hobbs, NM 88240
District II
1301 W Grand Ave., Artesia, NM 88210
District III
1000 Rio Brazos Rd., Aztec, NM 87410
District IV
1220 S. St. Francis Dr., Santa Fe, NM
87505

State of New Mexico
Energy, Minerals and Natural Resources
RECEIVED
OIL CONSERVATION DIVISION
JUL 15 2009
HOBBS
Santa Fe, NM 87505
PAGE 1 OF 5

Form C-103
June 19, 2008

WELL API NO. 3000501161 ✓	
5. Indicate Type of Lease STATE FEE <input checked="" type="checkbox"/> ✓	
6. State Oil & Gas Lease No.	
7. Lease Name or Unit Agreement Name SOUTH CAPROCK QUEEN UNIT ✓	
8. Well Number 015 ✓	
9. OGRID Number 12627 ✓	
10. Pool name or Wildcat 08559 CAPROCK QUEEN ✓	
SUNDRY NOTICES AND REPORTS ON WELLS (DO NOT USE THIS FORM FOR PROPOSALS TO DRILL OR TO DEEPEN OR PLUG BACK TO A DIFFERENT RESERVOIR. USE "APPLICATION FOR PERMIT" (FORM C-101) FOR SUCH PROPOSALS)	
1. Type of Well: Oil Well Gas Well <input checked="" type="checkbox"/> Other INJECTION	
2. Name of Operator KEVIN O BUTLER & ASSOCIATES, INC. ✓	
3. Address of Operator PO BOX 1171, MIDLAND, TEXAS 79702	
4. Well Location Unit Letter <u>O</u> 330 feet from the <u>SOUTH</u> line and <u>1980</u> feet from the <u>EAST</u> line ✓ Section <u>28</u> Township <u>14S</u> Range <u>31E</u> NMPM CHAVES County	
11. Elevation (Show whether DR, RKB, RT, GR, etc.)	

12. Check Appropriate Box to Indicate Nature of Notice, Report or Other Data

NOTICE OF INTENTION TO:	SUBSEQUENT REPORT OF:
PERFORM REMEDIAL WORK <input type="checkbox"/>	REMEDIAL WORK <input type="checkbox"/>
TEMPORARILY ABANDON <input type="checkbox"/>	ALTERING CASING <input type="checkbox"/>
PULL OR ALTER CASING <input type="checkbox"/>	COMMENCE DRILLING OPNS. <input type="checkbox"/> P AND A <input type="checkbox"/>
DOWNHOLE COMMINGLE <input type="checkbox"/>	CASING/CEMENT JOB <input type="checkbox"/>
OTHER: <input type="checkbox"/>	OTHER: MIT WITNESSED & WORKOVER COMPLETE

13. Describe proposed or completed operations. (Clearly state all pertinent details, and give pertinent dates, including estimated date of starting any proposed work). SEE RULE 1103. For Multiple Completions: Attach wellbore diagram of proposed completion or recompletion.

7/10/09 MIT WITNESS BY OCD
SEE ATTACHED CHART

SCRQ 15-28SWD
PKR
July 2009

Background: PKR leaking fail MIT
Objective: Replace PKR

Day 1 Wednesday 7/8/09	MI spot rig & BOP.
Day 2 Thursday 7/9/09	Land matting board & RU WSU. ND injection tee. Open well up & release PKR 22pnts off slips. Had 14pnts on. NU BOP & slip elevators. POOH tbg. PKR swapping well. Truck pull displacement. LD PKR no damage to element @ showed no sign of element being compressed. PU new IPC SD Tension PKR 3 1/2 w 10V 2 1/16" collar & 50K shear. RBIH 93 jnts 2 1/16" 3.25# IJ, IPC tbg for EOT 2,896'. ND BOP & slip handling equipment. Set in slips & RU pump truck on tbg & vac on annulus. Mix 20gal PKR fluid & pump bbl FW to load & break circulation. Pump bbl PKR fluid around 1bpm. SD & set PKR leaving 18 pnts

	on. Release vac truck 50bbl dispose. Build back injection tee & run chart recorder. Hold 350# for 30min. RD off matting board.
Day 3 Friday 7/10/09	MOB off w/ tug from Gandy D5.

SCRQ 15-28SWD

Liner
May 2009

Background: fail MIT 3/4BPM @ 350#

Objective: RIH 4 1/2" liner for cement

Day 1 Friday 5/29/09	MIRU Joe's WSU. Rig sinking as pad gave way. RD & spot rig on matting boards. 2hr wait on mats. RU & pusher safety WSU. 750# on arrival & triplex running. SD triplex & blow well down to produced water tanks. Flow back 18bbl FSW then tbg & csg on vacuum. 48" & truck to ND Hurcules head. Tie back, 55pnts off slips. PKR had 27pnt on flange. Dig out A section & NU BOP w/ 8' pony. Work free point to PKR & try to release ADI. No J gap action & PKR only working down whole 6'. Pull 62pnts but will not sear. Work 3hr then SWIFN.
Day 2 Monday 6/1/09	0# on arrival. Open well up & Watson PKR man work ADI. By pass opened & wait equalize. POOH 20stands & PKR swabbing well. SWI & wait on vacuum. POOH while truck pull cellar. Truck pulled 70bbl FSW & dispose. LD PKR for field redress & PU 4 7/8" bit & xo. RIH 4 7/8" 3cone & xo on IPC & PU 15 jnts 2 3/8 J55, BB & tag fill 2,967 corrected. POOH & LD bit. PU redressed 5 1/2" ADI & RBIH to 2,865'. Set PKR leaving 16pnt on. SWIFN. Note: tag fluid 1,790'
Day 3 Tuesday 6/2/09	Open well up & load annulus, tbg in diesel. Kill load 22bbl FSW & pump 1bpm & 120#, no communication to tbg. Blow down well & open bypass. POOH slow as vacuum pull cellar. LD PKR & RIH 1 jnt. Poor 48gal PKR sand & pump 10bbl FSW conventional. SD 1 hr, lunch. PU bit & xo RIH to tag 313'. Stack out & use tongs to drill trough bridge. RIH 4 jnts to tag 438'. Dry drill bridge put bit backing off. Pull 25pnts over out of sand. POOH & tbg not plugged. SWIFN.
Day 4 Wednesday 6/3/09	RR delivered out 50jnts 2 3/8" J55. 31 new YB. Lift spotted work sting. PU bit & xo & tally IH. Stack out 3 pnts & through bridge 439'. Tag sand 2,887.25'. RU kill truck & vacuum to pump reverse & wash down sand. Pump 55bbl FW but can't make whole as loosing returns to csg whole. Increase max rate but can't wash down 62bbl. PU 32' & bottoms up @ 8bpm. Take weak returns heavy sand. 60bbl bottoms up to clean water around. SD pumps. Release pump & vacc as POOH all. Break out bit & ND BOP. Change out well head & NU BOP. SWIFN & change out rams to 4 1/2".
Day 5 Thursday 6/4/09	PU 41/2" handling equipment. Caliber on top 20 collars, all @ 4.875. Make turn down float shoe & float collar w/ thread lock. Vacuum truck pull returns as RIH PU csg. Tag solid 144'. Straight PU & set down, can't rotate off. 6" off tag & shut BOP. Make swedge in derrick & pump truck conventional 35ppl @ 3bpm clean returns around to vac. Stack out & pump 50bbl. 0# @ same rate & pressure. Clean full returns around. LD 4 jnts 4 1/2", 11.60# w/ protectors. Leave float & shoe on last jnt. LD 4 1/2" equipment & PU 2 3/8" handling equipment. Change out BOP rams & SWIFN.
Day 6 Friday 6/5/09	Spot reverse unit & PU tapered mill OD 4.958". PU & Tally 5 collars. 110bbl FW delivered to pit. Tag up & bottoms up @ 126'. Clean returns & set down mill. Take metal returns. Make 30'/hr. Drop out 154' & fall 3' to tag. Bottoms up to FW & change out TIW rubber to 2 3/8". Start mill & 16" whole & drop out.

	then reverse clean. LD swivel & RIH doubles to tag sand 2,884'. PU swivel & try to wash down but pump 2.5bpm & .25bpm returns @ 0#. Keep mill moving up & down. No rotation max pump 4.25bpm & <.25bpm. Out of water. LD swivel & POOH tbg standing back. LD collars & mill. Tapered mill 4.958' @ surface. SWIFN.
Day 7 Monday 6/8/09	Open well up & make BHA. 4.75" bit, xo, J 55 swedge, collar 4.875", swedge & 2 3/8" collar. RIH to tag. 139'. Stack out then rotate off with tongs. Drag through 146' then drop out & tag bottom 2,884'. POOH dragging in same spot. Work collar back & forth through tight spot. Several times used block to push through. LD BHA & RU 4 1/2" handling equipment. RIH to tag 134'. Poor diesel & work csg. Max depth 146'. Straight PU each time. Rotate with 36" but no go. POOH LD w/ protectors. Change rams & RU for 2 3/8". SWIFN. Note. Float shoe scarred on opposing sides.
Day 8 Tuesday 6/9/09	Open well up & PU tapered mill OD 4.958" & 5 3.5" collars. 1/2pnt drag 126'. PU swivel & load well 21bbl FSW. Good circulation, start milling. Metal returns work mill down. Work down 4' & drop out. Drag & mill again 147-154'. 6 collars work down 183'. Make several passes & mill dragging 1 1/2pnt while spinning & free straight pick up. Rework all collars. Straight PU with mill shut down & metal returns while spinning. Mill for 7hr & lost 40bbl FSW. SD, LD swivel & stand back collars. RU 4 1/2" equipment. RIH csg & tag up 134'. Work csg but can't make whole. Straight PU. POOH LD csg with protectors. Leave shoe & collar made. RIH then LD 6 3/2" collars. SWIFN.
Day 9 Wednesday 6/10/09	VMJ vac pit & dispose 70bbl FSW. RDMO reverse package. RR forked off 64jnts 4 1/2", 11.60# collars 4.875" & spot 73jnts 4 1/2" 11.35# flush jnt. PU flush elevators & safety clam. Make float shoe & collar. Thread lock 1300# make up. RIH tally & tag up 129'. Poor diesel & hydraulic oil but can't make whole. Set blocks down & make 11' for 139' IH. POOH dragging 5pnts. LD 1jnt 4 1/2" & SWIFN.
Day 10 Thursday 6/11/09	LD 3jnts 4 1/2" flush jnts breaking out float collar, shoe damaged. RU 3 1/2" equipment. PU & tally 10 jnts 3 1/2" 9.30# upset tbg. Slight drag @ 129' but fall through under tbg weight. Work tbg through spot. RIH to 316'. POOH LD w/ protectors. RU 2 3/8" & RIH 80jnts J55 IPC to LD. RIH 97 jnts 2 3/8" J55 BB to LD. SWIFN.
Day 11 Friday 6/12/09	Fork off 80jnts 2 3/8" IPC J55 tbg & 73jnts 4 1/2" 11.35# flush jnt & 1jnts 4 1/2", 11.60# w/ float & collar OD 4.875. Move 96jnts 2 3/8" J88 BB work string to next location. Spot 94jnt 3 1/2" N 80 YB upset & change out rams. PU & tally 1jnt. Make 3 1/2" 8ERU float shoe & collar with thread lock. Make 1350#. Vac pull displacement. RIH 92 jnt to tag sand @ 2,888' corrected. Load csg 19bbl FSW & PU 5' off tag. SWIFN.
Day 12 Monday 6/15/09	Spot Graco reverse package & open well up. 20pnt over to move pipe. RU pump & pit to feed kill truck. Transport to feed pit. PU 3" TIW rubber & start wash down. 12bbl load & break circulation bottoms up 6bpm @ 200#. Bottoms up & tag 2,883'. Wash down taking formation returns. Wash down conventional taking 5bpm returns. EOT 2,919' Start taking sand returns mixed with formation. Circulate 120bbl till returns clean. PU 5' & land 3 1/2 in slips. Weld on bell nipple. SWIFN 4 1/2" collar & swedge. Csg Details: 93 jnts 3 1/2" N 80 9.3# upset 8eur Float collar 2,887' EOT 2,919'
Day 13 Tuesday	Spot 2 transports 250bbl FW & Rising Star Pump & bulk truck, 310sxs class C with 2% CaCl & friction reducer. RU pump truck with 3.5" puck launcher pig

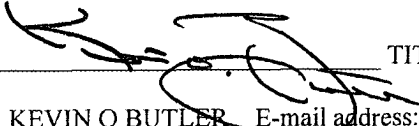
6/16/09	<p>tailed. 15bbl 4bpm to break circulation 220#. Start on cement. Pump 93sxs 14.5# till dence-o-meter failure. Fast wash truck & go to water. Pump 65bbl FW till cement around conventional 5bpm 300#. Vacuum water location then pull pit as take returns over pit capacity. Vac scrub out 15bbl slurry on. Release to CRI. Release pump. Wait 2hr new pump & spot transport 130bbl FW & empty vac on pit. RU new pump & 10bbl FW to break circulation & take full returns @ 3bpm & 190#. Go to cement. Pump 55bbl slurry 14.5#. Slow rate to 2bpm. Well on vacuum. Open launcher up & push wiper plug with shovel through bell nipple. Wash up to pit. Pump FW displacement. 10bbl away slow to 1bpm as cement to surface & taking .5bpm @ 650#. 20bbl away slow to .5bpm @ 720#. Land plug 23.5bbl displace. Pressure up 1,250# & SD. Blow pack & check float holding. RD launcher & trucks release. Empty pit 95bbl to CRI. ND well head & PU spooler & BOOP SWIFN. Load out & release 4 ½" handling equipment. Remaining 70bbl FW to pit. Slurry truck & crew stuck on hill. Wait 1.5hr for loader to pull truck up hill.</p>
Day 14 Wednesday 6/17/09	WOC. Gandy grader, roller packer & water truck repair hill.
Day 15 Thursday 6/18/09	<p>Open well up & PU 2 7/8" LHT three cone bit SN: 1051377 & bit sub. 6 collars 2" for 687#. PU xo & change out handling equipment for 1.25" P105 high drill. 50 jnts then xo & 1.5" N 80 high drill. Tag up 2,888' corrected. 86jnts IH. PU 3' & circulate clean. Set down 1pnt & drill out @ 700ft/lbs. 1.5bpm @ 750#. Drill through wiper plug then float collar. Make 12"/20min through cement. Drill up float shoe & drop out cement 2,940'. Lost 40bbl 20min. Max pump & charge up formation. Washing down sand 2,966'. Returns now iron & formation. Wash down 2,984'. Lost 30bbl in 1hr. LD swivel & POOH standing back doubles. Circulate clean w/ EOT 2,859' & SWIFN.</p>
Day 16 Friday 6/19/09	<p>Open well up RIH 2 stands to tag 2,984'. Truck fill pit & load whole 5bbl. PU swivel & wash down iron to PBTD 2,990' under assumed 12' KB. 1.5bpm @ 800#. Tag up hard & torque. PU 3' & circulate clean 60bbl over capacity. Graco drop float & piggy back pump & pit after dispose 90bbl FSW. LD work sting changing out handing equipment. LD collars & break out bit. Bit worn but bearing OK. SWIFN. Reverse package MOB to next location & winch truck haul out work string & collars.</p>
Day 17 Monday 6/22/09	<p>PU 2.063" slip elevators & change out rams, slips & tong head. PU SL Tension PKR 3.5" with 30K shear. PU 2 1/16" J55 IPC 10IJ pipe & make 1,050#. RIH 93 jnts for EOT 2,896'. RU pump truck 100bbl 2%KCL. WSU failure. SD hr. Circulate clean 35bbl FW .5bpm @ 0#. SI returns to vac truck & inject 25bbl @ 3/4bpm & #500. 20bbl injected pressure 1,000#. Blow down to truck & repeat test. 5bbl, 3/4bpm 700#. 15min lost 80#. Blow well down & mix packer fluid. Reverse fluid around 3/4bpm 35bbl returns to vac. Set PKR & ND BOP & spooler. Set in slips leaving 14pnts on. Truck load annulus & pressure up 500#. Release trucks. RD. Lost 9# in 1hr. Build injection tee & clean location.</p> <p>Note: PKR same set as AD1, down & R to set & straight PU.</p>
Day 17 Tuesday 6/23/09	Release matting board to J&A truck. Dozer tug rig up hill. Release dozer & WSU MO.

Spud Date:

Rig Release Date:

I hereby certify that the information above is true and complete to the best of my knowledge and belief.

SIGNATURE



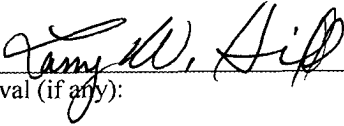
TITLE

President/Owner DATE 7-14-09

Type or print name KEVIN O BUTLER E-mail address: robie@geedmidland.com PHONE: 432-682-1178

For State Use Only

APPROVED BY:



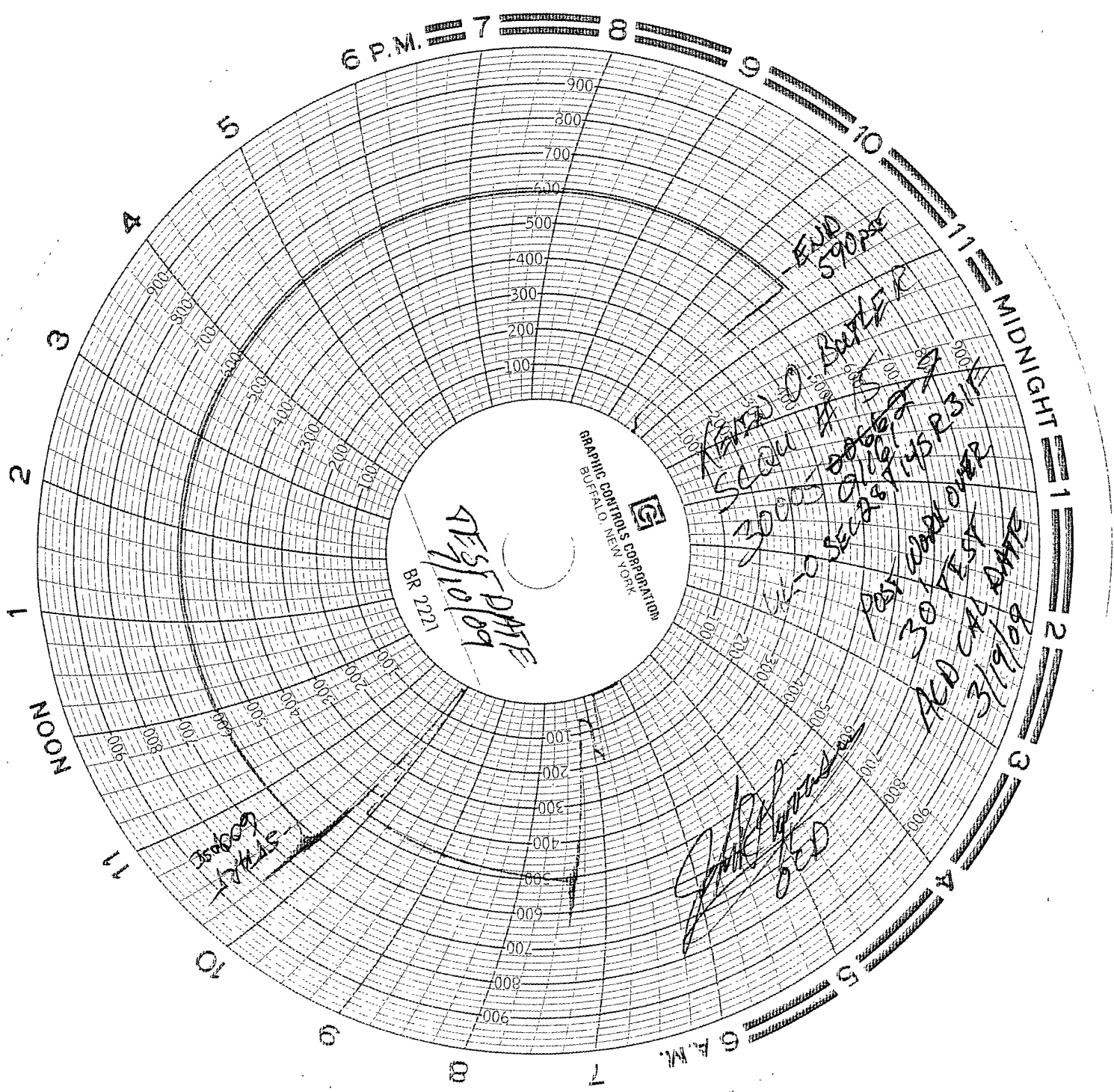
TITLE

DISTRICT 1 SUPERVISOR

DATE

JUL 15 2009

Conditions of Approval (if any):



6 P.M. 7 8 9 10 11

MIDNIGHT

1 2 3 4 5 6 A.M.

GRAPHIC CONTROLS CORPORATION
BUFFALO, NEW YORK

BR 2221
DATE 3/10/09

END 590 Hz

SCANNED BY
3000
SEC 0.145 P31K

POST CARD OVER
30 TEST
ACD CAP DATE
3/19/09

Handwritten signature and notes.

STAY
DATE