

UNITED STATES  
DEPARTMENT OF THE INTERIOR  
BUREAU OF LAND MANAGEMENT

OCD Hobbs

FORM APPROVED  
OMB No. 1004-0137  
Expires March 31, 2007

## SUNDRY NOTICES AND REPORTS ON WELLS

Do not use this form for proposals to drill or to re-enter an abandoned well. Use Form 3160-3 (APD) for such proposals.

## SUBMIT IN TRIPLICATE- Other instructions on reverse side.

1. Type of Well  
☒ Oil Well ☐ Gas Well ☐ Other

2. Name of Operator Range Operating New Mexico, Inc.

3a. Address  
100 Throckmorton St., Ste. 1200, Fort Worth, TX 761023b. Phone No. (include area code)  
817-869-42164. Location of Well (Footage, Sec., T., R., M., or Survey Description)  
330' FNL & 660' FEL, Unit A, Sec. 7, T22S, R37E

5. Lease Serial No.

LC 032573B

6. If Indian, Allottee or Tribe Name

7. If Unit or CA/Agreement, Name and/or No.

8. Well Name and No.

Elliott B Federal #14

9. API Well No.

30-025-37867

10. Field and Pool, or Exploratory Area

Eunice; San Adres, Southwest

11. County or Parish, State

Lea

## 12. CHECK APPROPRIATE BOX(ES) TO INDICATE NATURE OF NOTICE, REPORT, OR OTHER DATA

## TYPE OF SUBMISSION

## TYPE OF ACTION

☒ Notice of Intent☐ Subsequent Report☐ Final Abandonment Notice☐ Acidize☐ Alter Casing☐ Casing Repair☐ Change Plans☐ Convert to Injection☐ Deepen☐ Fracture Treat☐ New Construction☒ Plug and Abandon☐ Plug Back☐ Production (Start/Resume)☐ Reclamation☐ Recomplete☐ Temporarily Abandon☐ Water Disposal☐ Water Shut-Off☐ Well Integrity☐ Other

13. Describe Proposed or Completed Operation (clearly state all pertinent details, including estimated starting date of any proposed work and approximate duration thereof. If the proposal is to deepen directionally or recompletable horizontally, give subsurface locations and measured and true vertical depths of all pertinent markers and zones. Attach the Bond under which the work will be performed or provide the Bond No. on file with BLM/BIA. Required subsequent reports shall be filed within 30 days following completion of the involved operations. If the operation results in a multiple completion or recompletable in a new interval, a Form 3160-4 shall be filed once testing has been completed. Final Abandonment Notices shall be filed only after all requirements, including reclamation, have been completed, and the operator has determined that the site is ready for final inspection.)

RU and POOH with tubing and ESP. RHH w/ wireline and set 5K CIBP @ 50' and dump bail 10' of cement on top of CIBP. Pressure test to 500 psi for 30 minutes. RHH w/ wireline and set 5K CIBP @ 1,065' and dump 10' of cement on top. Pressure test to 500 psi for 30 minutes. RHH w/ wireline and set 5K CIBP @ 50' and fill to surface with cement. Cut off wellhead.

AUG 04 2009  
HOBBSOCDSEE ATTACHED FOR  
CONDITIONS OF APPROVAL

\*SEE REVISED COAs DW 8-3-09

\*Interim Reclamation Procedures Attached

14. I hereby certify that the foregoing is true and correct  
Name (Printed/Typed)

Paula Hale

Title Sr. Reg. Sp.

Signature

Date

06/24/2009

## THIS SPACE FOR FEDERAL OR STATE OFFICE USE

Approved by

Title Petroleum Engineer

Date

7-20-09

Conditions of approval, if any, are attached. Approval of this notice does not warrant or certify that the applicant holds legal or equitable title to those rights in the subject lease which would entitle the applicant to conduct operations thereon.

Office

CFO

Title 18 U.S.C. Section 1001 and Title 43 U.S.C. Section 1212, make it a crime for any person knowingly and willfully to make to any department or agency of the United States any false, fictitious or fraudulent statements or representations as to any matter within its jurisdiction.

(Instructions on page 2)

AUG 05 2009

Well Name: **Elliott B Federal #14**

Unit: **A**

Lease Type: **Fed**

Location: **330' FNL & 330' FEL**

Sec: **7**

Township: **22S**

Range: **37E**

County: **Lea**

State: **NM**

API: **30-025-37867**

Formation: **San Andres**

Surface Csg

Size: **8 5/8"**

Wt.&Thrd: **24#**

Grade: **K-55**

Set @: **1062'**

Sxs cmt: **330**

Circ: **8 bbls**

TOC: **Surface**

Hole Size: **12.25"**

KB: **3443**

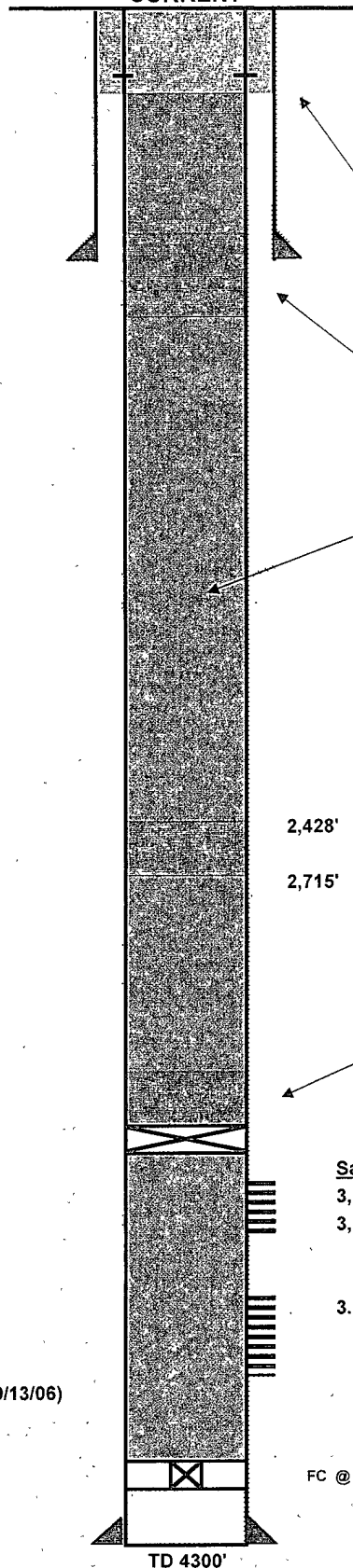
DF: **3442**

GL: **3433**

Spud Date: **8/27/2006**

Log Date: **9/9/2006**

**CURRENT**



**Plug #4 - Perforate @ 300'. Establish Injection.**  
**Circulate cement inside and outside of casing to surface.**

Estimated 70 sx for volume inside and outside of casing.

**Plug #3 - 25 sx (287') cement plug from 1,250' to 963'**  
**WOC and Tag.**

Abandonment mud (9.5 ppg brine w/ 12.5# salt gel per bbl)

2,428'  
2,715'  
**Plug #2 - 25 sx (287') of cement @ 2,715'**  
**WOC and Tag.**

**Plug #1 - CIBP set @ 3,810'. 25 sx (287') of cement**  
**on top of CIBP.**

Production Csg

Size: **5 1/2"**

Wt.&Thrd: **17#**

Grade: **K-55**

Set @: **4304'**

Sxs Cmt: **600**

Circ: **NO**

TOC: **790' by CBL (09/13/06)**

Hole Size: **7 7/8"**

San Andres

**3,896' - 3,902' (12 shots)**

**3,916' - 3,932' (32 shots)**

**3,992' - 4,046' (54 shots)**

FC @ 4262'

TD 4300'

Well Name: **Elliott B Federal #14**

Unit: **A**

Lease Type: **Fed**

Location: **330' FNL & 330' FEL**

Sec: **7**

Township: **22S**

Range: **37E**

County: **Lea**

State: **NM**

API: **30-025-37867**

Formation: **San Andres**

Surface Csg

Size: **8 5/8"**

Wt.&Thrd: **24#**

Grade: **K-55**

Set @: **1062'**

Sxs cmt: **330**

Circ: **8 bbls**

TOC: **Surface**

Hole Size: **12.25"**

KB: **3443**

DF: **3442**

GL: **3433**

Spud Date: **8/27/2006**

Log Date: **9/9/2006**

**CURRENT**

CIBP #3 - Set @ 50'. Cement from top of CIBP to surface.

CIBP #2 - Set @ 1,065. 10' of cement on top of CIBP.

CIBP #1 - Set @ 3,810'. 10' of cement on top of CIBP.

Production Csg

Size: **5 1/2"**

Wt.&Thrd: **17#**

Grade: **K-55**

Set @: **4304'**

Sxs Cmt: **600**

Circ: **NO**

TOC: **Calc'd 700' from surf.**

Hole Size: **7 7/8"**

San Andres

3,896' - 3,902' (12 shots)

3,916' - 3,932' (32 shots)

3,992' - 4,046' (54 shots)

FC @ 4262'

TD 4300'

Range Operating New Mexico, Inc.  
NMLC-032573B: Elliot B Federal #14  
330' FNL & 660' FEL Sec 7, T22S-R37E  
Lea County, New Mexico

## **REVISED**

RE: Plugging and Abandonment Requirements, Conditions of Approval

Based on the findings of the CBL sent to the BLM, the COA have been changed to the following:

1. Minimum of 25 sx will be used on every plug.
2. Circulate hole with mud or displace hole up to next plug with mud between each plug.
3. Perf and Squeeze a plug from 2715' with a minimum of 120' and 25sx. (Base of salt) WOC and tag. Must tag at 2595' or shallower. If an injection rate cannot be established, the plug will have to extend to 50' below the perfs.
4. Perf and Squeeze a plug from 1250' up to 1000' with a minimum 25sx. (Top of salt and surface csg shoe) WOC and tag. Must tag at 1000' or shallower. If an injection rate cannot be established, the plug will have to extend to 50' below the perfs.
5. Perforate at 300' and squeeze. Must establish injection rate. Plug cement in & out of casing to surface. (Ogallala and surface)

See attached standard COAs.

DHW 080309

**BUREAU OF LAND MANAGEMENT**  
**Carlsbad Field Office**  
**620 East Greene Street**  
**Carlsbad, New Mexico 88220**  
**575-234-5972**

**Permanent Abandonment of Federal Wells**  
**Conditions of Approval**

Failure to comply with the following Conditions of Approval may result in a Notice of Incidents of Noncompliance (INC) in accordance with 43 CFR 3163.1.

1. Plugging operations shall commence within ninety (90) days from the approval date of this Notice of Intent to Abandon.

**If you are unable to plug the well by the 90<sup>th</sup> day provide this office, prior to the 90<sup>th</sup> day, with the reason for not meeting the deadline and a date when we can expect the well to be plugged. Failure to do so will result in enforcement action.**

2. **Notification:** Contact the appropriate BLM office at least 24 hours prior to the commencing of any plugging operations. For wells in Chaves and Roosevelt County, call 575-627-0272; Eddy County, call 575-361-2822; Lea County, call 575-393-3612.

3. **Blowout Preventers:** A blowout preventer (BOP), as appropriate, shall be installed before commencing any plugging operation. The BOP must be installed and maintained as per API and manufacturer recommendations. The minimum BOP requirement is a 2M system for a well not deeper than 9,090 feet; a 3M system for a well not deeper than 13,636 feet; and a 5M system for a well not deeper than 22,727 feet.

4. **Mud Requirement:** Mud shall be placed between all plugs. Minimum consistency of plugging mud shall be obtained by mixing at the rate of 25 sacks (50 pounds each) of gel per 100 barrels of **brine** water. Minimum nine (9) pounds per gallon.

5. **Cement Requirement:** Sufficient cement shall be used to bring any required plug to the specified depth and length. Any given cement volumes on the proposed plugging procedure are merely estimates and are not final. Unless specific approval is received, no plug except the surface plug shall be less than 25 sacks of cement. In lieu of a cement plug in a cased hole, a bridge plug set within 50 feet to 100 feet above the perforations shall be capped with 25 sacks of cement. If a bailer is used to cap this plug, 35 feet of cement shall be sufficient.

Unless otherwise specified in the approved procedure, the cement plug shall consist of either Neat Class "C", for up to 7,500 feet of depth or Neat Class "H", for deeper than 7,500 feet plugs.

6. **Dry Hole Marker:** All casing shall be cut-off at the base of the cellar or 3 feet below final restored ground level (whichever is deeper). The well bore shall then be capped with a 4-inch pipe, 10-feet in length, 4 feet above ground and embedded in cement. The following information shall be permanently inscribed on the dry hole marker: well name and number, name of the operator, lease serial number, surveyed location (quarter-quarter section, section, township and range or other authorized survey designation acceptable to the authorized officer such as metes and bounds).

7. **Subsequent Plugging Reporting:** Within 30 days after plugging work is completed, file one original and five copies of the Subsequent Report of Abandonment, Form 3160-5 to BLM. The report should give in detail the manner in which the plugging work was carried out, the extent (by depths) of cement plugs placed, and the size and location (by depths) of casing left in the well. **Show date well was plugged.**

8. **Trash:** All trash, junk and other waste material shall be contained in trash cages or bins to prevent scattering and will be removed and deposited in an approved sanitary landfill. Burial on site is not permitted.

Following the submission and approval of the Subsequent Report of Abandonment, surface restoration conditions of approval will be developed and furnished to you.

DHW 071309



# United States Department of the Interior

## BUREAU OF LAND MANAGEMENT

Carlsbad Field Office  
620 E. Greene St.  
Carlsbad, New Mexico 88220-6292  
www.blm.gov/nm



In Reply Refer To 1310

### Interim Reclamation Procedures

**Reclamation Objective:** Oil and gas development is one of many uses of the public lands and resources. While development may have a short- or long-term effect on the land, successful reclamation can ensure the effect is not permanent. During the life of the development, all disturbed areas not needed for active support of production operations should undergo "interim" reclamation in order to minimize the environmental impacts of development on other resources and uses.

Interim reclamation consists of minimizing the footprint of disturbance by reclaiming all portions of the well site not needed for production operations. The portions of the cleared well site not needed for operational and safety purposes are recontoured to a final or intermediate contour that blends with the surrounding topography as much as possible. Sufficient level area remains for setup of a workover rig and to park equipment. Topsoil is respread over areas not needed for all-weather operations. Production facilities should be clustered to maximize the opportunity for interim reclamation. In order to inspect and operate the well or complete workover operations, it may be necessary to drive, park, and operate on restored, interim vegetation within the previously disturbed area. This is generally acceptable provided damage is repaired and reclaimed following use.

To reduce final reclamation costs; maintain healthy, biologically active topsoil; and to minimize habitat, visual, and forage loss during the life of the well, all salvaged topsoil should be spread over the area of interim reclamation, rather than stockpiled.

1. The Application for Permit to Drill or Reenter (APD, Form 3160-3), Surface Use Plan of Operations must include adequate measures for stabilization and reclamation of disturbed lands. Oil and Gas operators must plan for reclamation, both interim and final, up front in the APD process as per Onshore Oil and Gas Order No. 1.
2. For wells and/or access roads not having an approved plan, or an inadequate plan for surface reclamation (either interim or final reclamation), the operator must submit a proposal describing the procedures for reclamation. For interim reclamation, the appropriate time for submittal would be when filing the Well Completion or Recompletion Report and Log (Form 3160-4). Interim reclamation is to be completed within 6 months of well completion.
3. If you have an approved Surface Use Plan of Operation and/or an approved Sundry Notice, you are free to proceed with interim reclamation as per approved APD or Sundry Notice. If you have issues or concerns, contact a BLM specialist to assist you. It would be in your interest to have a BLM specialist look at the location and access road prior to the removal of reclamation equipment to ensure that it meets BLM objectives. Upon conclusion submit a Form 3160-5, Subsequent Report of Reclamation. This will prompt a specialist to inspect the location to verify work was completed as per approved plans.
4. The approved Subsequent Report of Reclamation will be your notice that the native soils, contour and seedbed have been reestablished. If the BLM objectives have not been met the operator will be notified and corrective actions may be required.
5. It is the responsibility of the operator to monitor these locations and/or access roads until such time as the operator feels that the BLM objective has been met.

If there are any questions, please feel free to contact any of the following specialists:

Jim Amos  
Supervisory Environmental Protection Specialist  
575-234-5909, 575-361-2648 (Cell)

Cody Layton  
Natural Resource Specialist  
575-234-5959

Terry Gregston  
Environmental Protection Specialist  
575-234-5958

Trishia Bad Bear  
Natural Resource Specialist  
575-393-3612

Bobby Ballard  
Environmental Protection Specialist  
575-234-2230

Todd Suter  
Surface Protection Specialist  
575-234-5987

Randy Rust  
Environmental Protection Specialist  
575-234-5943

Doug Hoag  
Civil Engineering Technician  
575-234-5979

Linda Denniston  
Environmental Protection Specialist  
575-234-5974

Jennifer Van Curen  
Environmental Protection Specialist  
575-234-5905

Justin Frye  
Environmental Protection Specialist  
575-234-5922