

DISTRICT I  
1625 N. FRENCH DR., HOBBS, NM 88240

State of New Mexico  
Energy, Minerals and Natural Resources Department

Form C-102

DISTRICT II  
1301 W. GRAND AVENUE, ARTESIA, NM 88210

RECEIVED  
AUG 07 2009

OIL CONSERVATION DIVISION

Revised October 12, 2005  
Submit to Appropriate District Office  
State Lease - 4 Copies  
Fee Lease - 3 Copies

DISTRICT III  
1000 Rio Brazos Rd., Aztec, NM 87410

HOBBSOCD

1220 SOUTH ST. FRANCIS DR.  
Santa Fe, New Mexico 87505

DISTRICT IV  
1220 S. ST. FRANCIS DR., SANTA FE, NM 87505

WELL LOCATION AND ACREAGE DEDICATION PLAT

☐ AMENDED REPORT

API Number 30-025-39447	Pool Code 50350	Pool Name Penrose Skelly; Grayburg
Property Code 23108	Property Name LIVINGSTON	Well Number 25
OGRID No. 873	Operator Name APACHE CORPORATION	Elevation 3436'

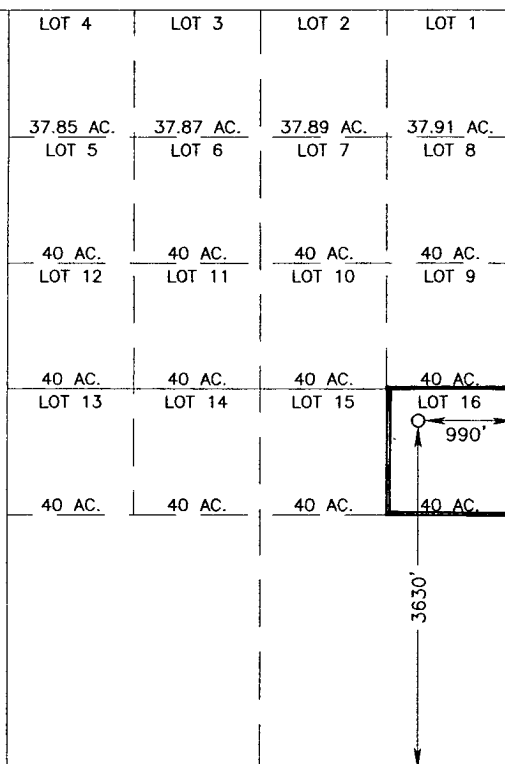
Surface Location

UL or lot No.	Section	Township	Range	Lot Idn	Feet from the	North/South line	Feet from the	East/West line	County
H	4	21-S	37-E	16	3630	SOUTH	990	EAST	LEA

Bottom Hole Location If Different From Surface

UL or lot No.	Section	Township	Range	Lot Idn	Feet from the	North/South line	Feet from the	East/West line	County
Dedicated Acres 40	Joint or Infill	Consolidation Code	Order No.						

NO ALLOWABLE WILL BE ASSIGNED TO THIS COMPLETION UNTIL ALL INTERESTS HAVE BEEN CONSOLIDATED  
OR A NON-STANDARD UNIT HAS BEEN APPROVED BY THE DIVISION



SCALE: 1"=2000'  
GEODETIC COORDINATES  
NAD 27 NME  
Y=551429.6 N  
X=861029.4 E  
LAT.=32.510538° N  
LONG.=103.162201° W  
LAT.=32°30'37.94" N  
LONG.=103°09'43.92" W

OPERATOR CERTIFICATION

I hereby certify that the information herein is true and complete to the best of my knowledge and belief, and that this organization either owns a working interest or unleased mineral interest in the land including the proposed bottom hole location or has a right to drill this well at this location pursuant to a contract with an owner of such mineral or working interest, or to a voluntary pooling agreement or a compulsory pooling order heretofore entered by the division.

*Sophie Mackay* 8/5/09  
Signature Date  
Sophie Mackay  
Printed Name

SURVEYOR CERTIFICATION

I hereby certify that the well location shown on this plat was plotted from field notes of actual surveys made by me or under my supervision, and that the same is true and correct to the best of my belief.

DECEMBER 13, 2009  
Date Surveyed  
Signature & Seal of Professional Surveyor 3239  
*Ronald J. Eidson* 12/13/09  
Certificate No. GARY EIDSON 12841  
RONALD J. EIDSON 3239