

DISTRICT I  
1625 N. French Dr., Hobbs, NM 88240

State of New Mexico  
Energy, Minerals & Natural Resources Department

Form C-102  
Revised October 12, 2005  
Submit to Appropriate District Office  
State Lease - 4 Copies  
Fee Lease - 3 Copies

DISTRICT II  
1301 W. Grand Avenue, Artesia, NM 88210

OIL CONSERVATION DIVISION  
1220 South St. Frances Dr.  
Santa Fe, NM 87505

RECEIVED

AUG 26 2009

DISTRICT III  
1000 Rio Brazos Rd., Aztec, NM 87410

HOBBSOCD ☐ AMENDED REPORT

DISTRICT IV  
1220 S. St. Francis Dr., Santa Fe, NM 87505

WELL LOCATION AND ACREAGE DEDICATION PLAT

API Number <b>30-025-39354</b>	Pool Code <b>43329</b>	Pool Name <b>MALJAMAR; GRAYBURG - SAN ANDRES</b>
Property Code <b>31422</b>	Property Name <b>MCA UNIT</b>	Well Number <b>484</b>
OGRID No. <b>217617</b>	Operator Name <b>CONOCOPHILLIPS</b>	Elevation <b>3959'</b>

Surface Location

UL or lot No. <b>K</b>	Section <b>28</b>	Township <b>17 S</b>	Range <b>32 E</b>	Lot Idn	Feet from the <b>2160</b>	North/South line <b>SOUTH</b>	Feet from the <b>2603</b>	East/West line <b>WEST</b>	County <b>LEA</b>
---------------------------	----------------------	-------------------------	----------------------	---------	------------------------------	----------------------------------	------------------------------	-------------------------------	----------------------

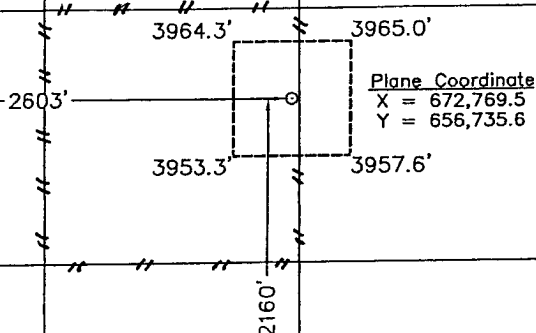
Bottom Hole Location If Different From Surface

UL or lot No.	Section	Township	Range	Lot Idn	Feet from the	North/South line	Feet from the	East/West line	County
Dedicated Acres <b>40</b>	Joint or Infill	Consolidation Code	Order No.						

NO ALLOWABLE WILL BE ASSIGNED TO THIS COMPLETION UNTIL ALL INTERESTS HAVE BEEN CONSOLIDATED OR A NON-STANDARD UNIT HAS BEEN APPROVED BY THE DIVISION

NOTE:

- 1) Plane Coordinates shown hereon are Transverse Mercator Grid and Conform to the "New Mexico Coordinate System", New Mexico East Zone, North American Datum of 1927. Distances shown hereon are mean horizontal surface values.



OPERATOR CERTIFICATION

I hereby certify the information contained herein is true and complete to the best of my knowledge and belief, and that this organization either owns a working interest or released mineral interest in the land including the proposed bottom hole location or has a right to drill this well at this location pursuant to a contract with an owner of such a mineral or working interest, or to a voluntary pooling agreement or a compulsory pooling order heretofore entered by the division.

*Jalyn N. Fiske* 8/20/09  
Signature Date  
**JALYN N. FISKE**  
Printed Name

SURVEYOR CERTIFICATION

I hereby certify that the well location shown on this plat was plotted from field notes of actual surveys made by me or under my supervision and that the same is true and correct to the best of my belief.

August 20, 2008

Date of Survey  
Signature & Seal of Professional Surveyor

*W.O. Nunez*  
W.O. Nunez  
Certificate No. MACON MEDONALD 2185