

OCD Hobbs

RECEIVED

Form 3160-5  
(April 2004)UNITED STATES  
DEPARTMENT OF THE INTERIOR  
BUREAU OF LAND MANAGEMENT

JUL 28 2009

HOBBSOCD

FORM APPROVED  
OMB No. 1004-0137  
Expires March 31, 2007

## SUNDRY NOTICES AND REPORTS ON WELLS

*Do not use this form for proposals to drill or to re-enter an abandoned well. Use Form 3160-3 (APD) for such proposals.*

5. Lease Serial No.

20057210

6. If Indian, Allottee or Tribe Name

7. If Unit or CA/Agreement, Name and/or No.

NM Federal Unit

8. Well Name and No.

MCA Unit # 479

9. API Well No.

30-025-39352

10. Field and Pool, or Exploratory Area

11. County or Parish, State

Lea County, New Mexico

**SUBMIT IN TRIPLICATE- Other instructions on reverse side.**

1. Type of Well

☒ Oil Well ☐ Gas Well ☐ Other

2. Name of Operator

ConocoPhillips Company

3a. Address

4001 Penbrook, Suite 351, Odessa, Texas 79762

3b. Phone No. (include area code)

432-368-1268

4. Location of Well (Footage, Sec., T., R., M., or Survey Description)

Section 28, T-17-S, R-32-E, Lea County, New Mexico  
660 FSL and 1480 FWL

## 12. CHECK APPROPRIATE BOX(ES) TO INDICATE NATURE OF NOTICE, REPORT, OR OTHER DATA

## TYPE OF SUBMISSION

## TYPE OF ACTION

- ☒ Notice of Intent
- ☐ Subsequent Report
- ☐ Final Abandonment Notice

- ☐ Acidize ☐ Deepen ☐ Production (Start/Resume) ☐ Water Shut-Off
- ☐ Alter Casing ☐ Fracture Treat ☐ Reclamation ☐ Well Integrity
- ☐ Casing Repair ☒ New Construction ☐ Recomplete ☐ Other
- ☐ Change Plans ☐ Plug and Abandon ☐ Temporarily Abandon
- ☐ Convert to Injection ☐ Plug Back ☐ Water Disposal

13. Describe Proposed or Completed Operation (clearly state all pertinent details, including estimated starting date of any proposed work and approximate duration thereof. If the proposal is to deepen directionally or recomplete horizontally, give subsurface locations and measured and true vertical depths of all pertinent markers and zones. Attach the Bond under which the work will be performed or provide the Bond No. on file with BLM/BIA. Required subsequent reports shall be filed within 30 days following completion of the involved operations. If the operation results in a multiple completion or recompletion in a new interval, a Form 3160-4 shall be filed once testing has been completed. Final Abandonment Notices shall be filed only after all requirements, including reclamation, have been completed, and the operator has determined that the site is ready for final inspection.)

ConocoPhillips Company request permission to move the MCA Unit #479 210' West and 86' North. The location move is generally depicted on the attached drawings.

New location: 74b/s + 1270/w

14. I hereby certify that the foregoing is true and correct  
Name (Printed/Typed)

Todd Tredaway

Title Contract Agent

Signature

Date

6-5-09

THIS SPACE FOR FEDERAL OR STATE OFFICE USE

Approved by

Conditions of approval, if any, are attached. Approval of this notice does not warrant or certify that the applicant holds legal or equitable title to those rights in the subject lease which would entitle the applicant to conduct operations thereon.

Title

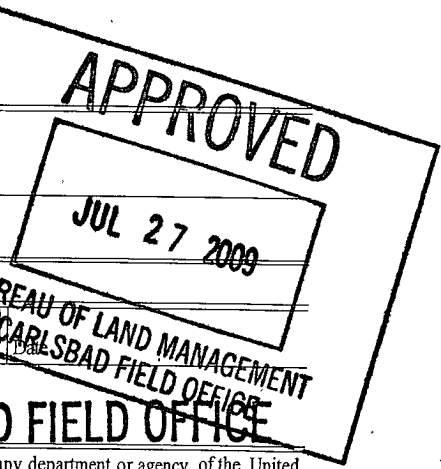
Office

CARLSBAD FIELD OFFICE

Title 18 U.S.C. Section 1001 and Title 43 U.S.C. Section 1212, make it a crime for any person knowingly and willfully to make to any department or agency of the United States any false, fictitious or fraudulent statements or representations as to any matter within its jurisdiction.

(Instructions on page 2)

L2



DISTRICT I  
1625 N. French Dr., Hobbs, NM 88240

DISTRICT II  
1301 W. Grand Avenue, Artesia, NM 88210

DISTRICT III  
1009 Rio Brazos Rd., Aztec, NM 87410

DISTRICT IV  
1220 S. St. Francis Dr., Santa Fe, NM 87505

State of New Mexico  
Energy, Minerals & Natural Resources Department

OIL CONSERVATION DIVISION  
1220 South St. Frances Dr.  
Santa Fe, NM 87505

Form C-102  
Revised October 12, 2005  
Submit to Appropriate District Office  
State Lease - 4 Copies  
Fee Lease - 3 Copies

☐ AMENDED REPORT

WELL LOCATION AND ACREAGE DEDICATION PLAT

API Number <b>30-025-39352</b>	Pool Code <b>43329</b>	Pool Name <b>MALJAMAR; GRAYBURG-SAN ANDRES</b>
Property Code <b>31422</b>	Property Name <b>MCA UNIT</b>	Well Number <b>479</b>
GRID No. <b>217217</b>	Operator Name <b>CONOCOPHILLIPS</b>	Elevation <b>3935'</b>

Surface Location

UL or lot No.	Section	Township	Range	Lot Idn	Feet from the	North/South line	Feet from the	East/West line	County
M	28	17 S	32 E		746	SOUTH	1270	WEST	LEA

Bottom Hole Location If Different From Surface

UL or lot No.	Section	Township	Range	Lot Idn	Feet from the	North/South line	Feet from the	East/West line	County
Dedicated Acres <b>40</b>	Joint or Infill	Consolidation Code	Order No.						

NO ALLOWABLE WILL BE ASSIGNED TO THIS COMPLETION UNTIL ALL INTERESTS HAVE BEEN CONSOLIDATED OR A NON-STANDARD UNIT HAS BEEN APPROVED BY THE DIVISION

<p>NOTE:</p> <p>1) Plane Coordinates shown hereon are Transverse Mercator Grid and Conform to the "New Mexico Coordinate System", New Mexico East Zone, North American Datum of 1927. Distances shown hereon are mean horizontal surface values.</p>	<p>OPERATOR CERTIFICATION</p> <p>I hereby certify the information contained herein is true and complete to the best of my knowledge and belief, and that this organization either owns a working interest or mineral interest in the land including the proposed well hole location or has a right to drill this well at this location pursuant to a contract with an owner of such a mineral or working interest, or is a voluntary pooling agreement or a compulsory pooling order as defined by the statutes.</p> <p><i>[Signature]</i> 8/5/09 Signature Date <b>TODD TREDAWAY</b> Printed Name</p>
<p>SURVEYOR CERTIFICATION</p> <p>I hereby certify that the well location shown on this plat was plotted from field notes of actual surveys made by me or under my supervision and that the same is true and correct to the best of my belief.</p> <p>June 1, 2009 Date of Survey</p> <p><i>[Signature]</i> Signature &amp; Seal of Professional Surveyor</p> <p>W.O. Num. <b>2008-0818</b></p> <p>Certificate No. <b>MACON-MEDICAL SURVEYING</b></p>	

3939.4'

3937.5'

1270'

3933.8'

3937.4'

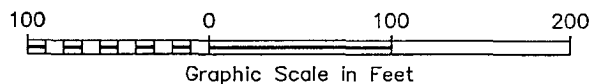
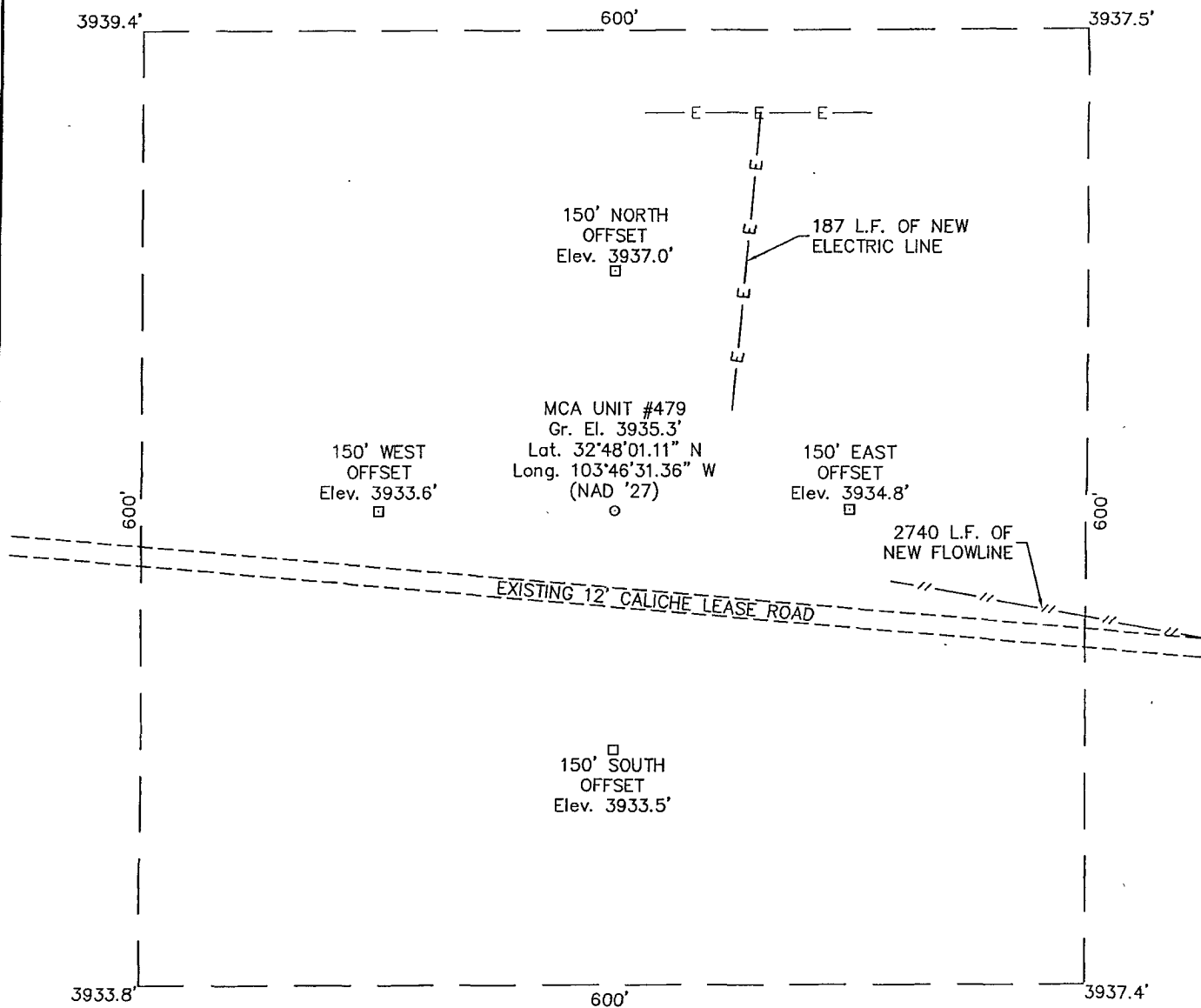
Plane Coordinate  
X = 871,445.1  
Y = 855,315.3

# SECTION 28, TOWNSHIP 17 SOUTH, RANGE 32 EAST, N.M.P.M.

LEA COUNTY

NEW MEXICO

L-2008-0818-A



## DRIVING DIRECTIONS

FROM THE INTERSECTION OF STATE HIGHWAY 82 AND COUNTY ROAD 126 IN MALJAMAR, NM GO SOUTH ON SAID COUNTY ROAD 126 3.8 MILES TO A LEASE ROAD ON WEST (RIGHT) SIDE OF ROAD, THEN GO WEST 0.4 MILE TO THE PROPOSED LOCATION.



110 W. LOUISIANA, STE. 110  
MIDLAND TEXAS, 79701  
(432) 687-0865 - (432) 687-0868 FAX

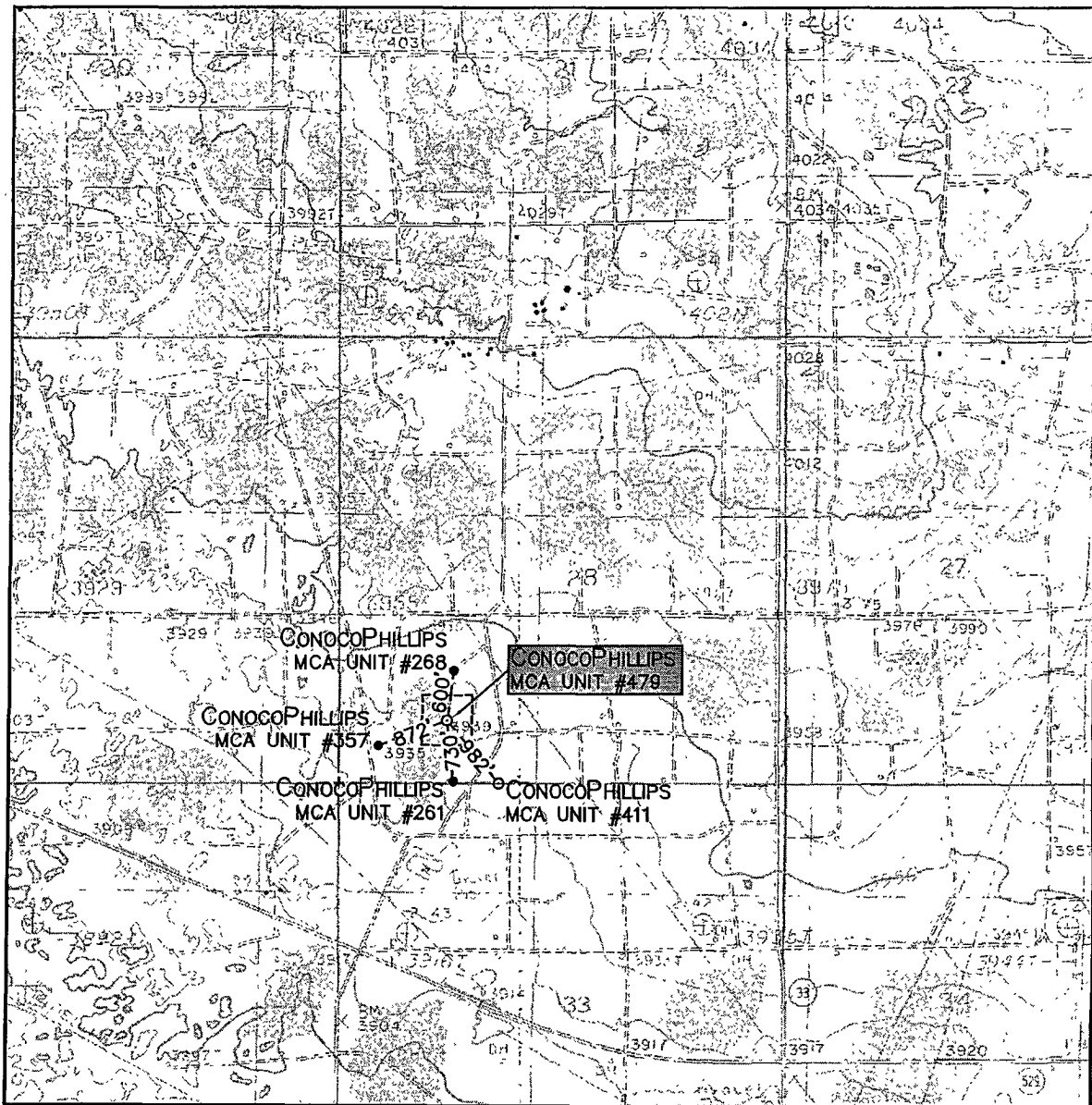
CONOCOPHILLIPS

**MCA UNIT #479**

Located 746' FSL & 1270' FWL, Section 28  
Township 17 South, Range 32 East, N.M.P.M.  
Lea County, New Mexico

Drawn By: LVA	Date: June 4, 2009
Scale: 1"=100'	Field Book: 433 / 32-33
Revision Date:	Quadrangle: Maljamar
W.O. No: 2008-0818	Dwg. No.: L-2008-0818-A

# LOCATION VERIFICATION MAP



SCALE: 1" = 2000'

CONTOUR INTERVAL:  
MALJAMAR - 5'

SEC. 28 TWP. 17-S RGE. 32-E

SURVEY N.M.P.M.

COUNTY LEA

DESCRIPTION 746' FSL & 1270' FWL

ELEVATION 3935'

OPERATOR CONOCOPHILLIPS

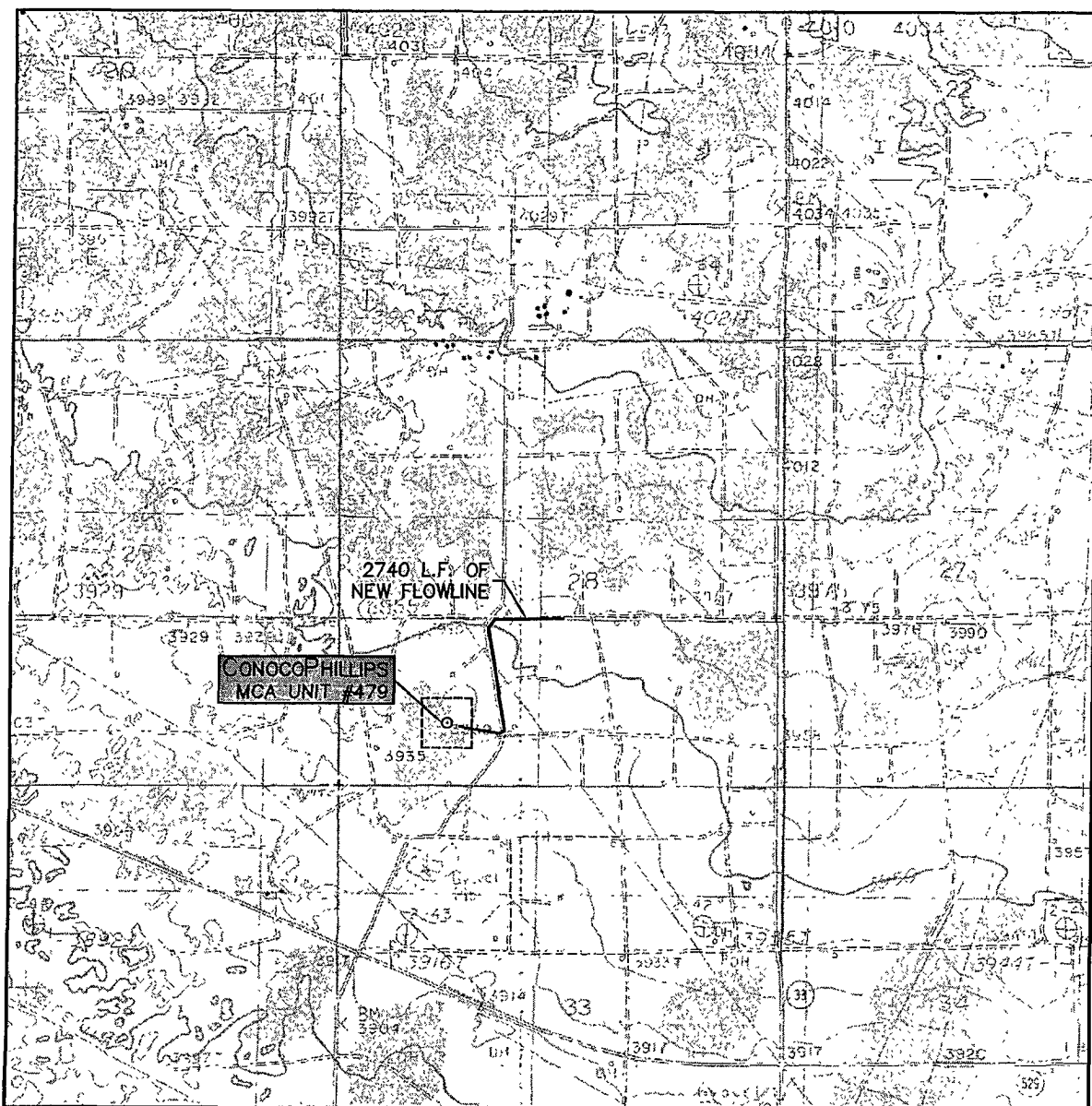
LEASE MCA UNIT

U.S.G.S. TOPOGRAPHIC MAP  
MALJAMAR



110 W. LOUISIANA, STE. 110  
MIDLAND TEXAS, 79701  
(432) 687-0865 - (432) 687-0868 FAX

# LOCATION VERIFICATION MAP



SCALE: 1" = 2000'

CONTOUR INTERVAL:  
MALJAMAR - 5'

SEC. 28 TWP. 17-S RGE. 32-E

SURVEY N.M.P.M.

COUNTY LEA

DESCRIPTION 746' FSL & 1270' FWL

ELEVATION 3935'

OPERATOR CONOCO PHILLIPS

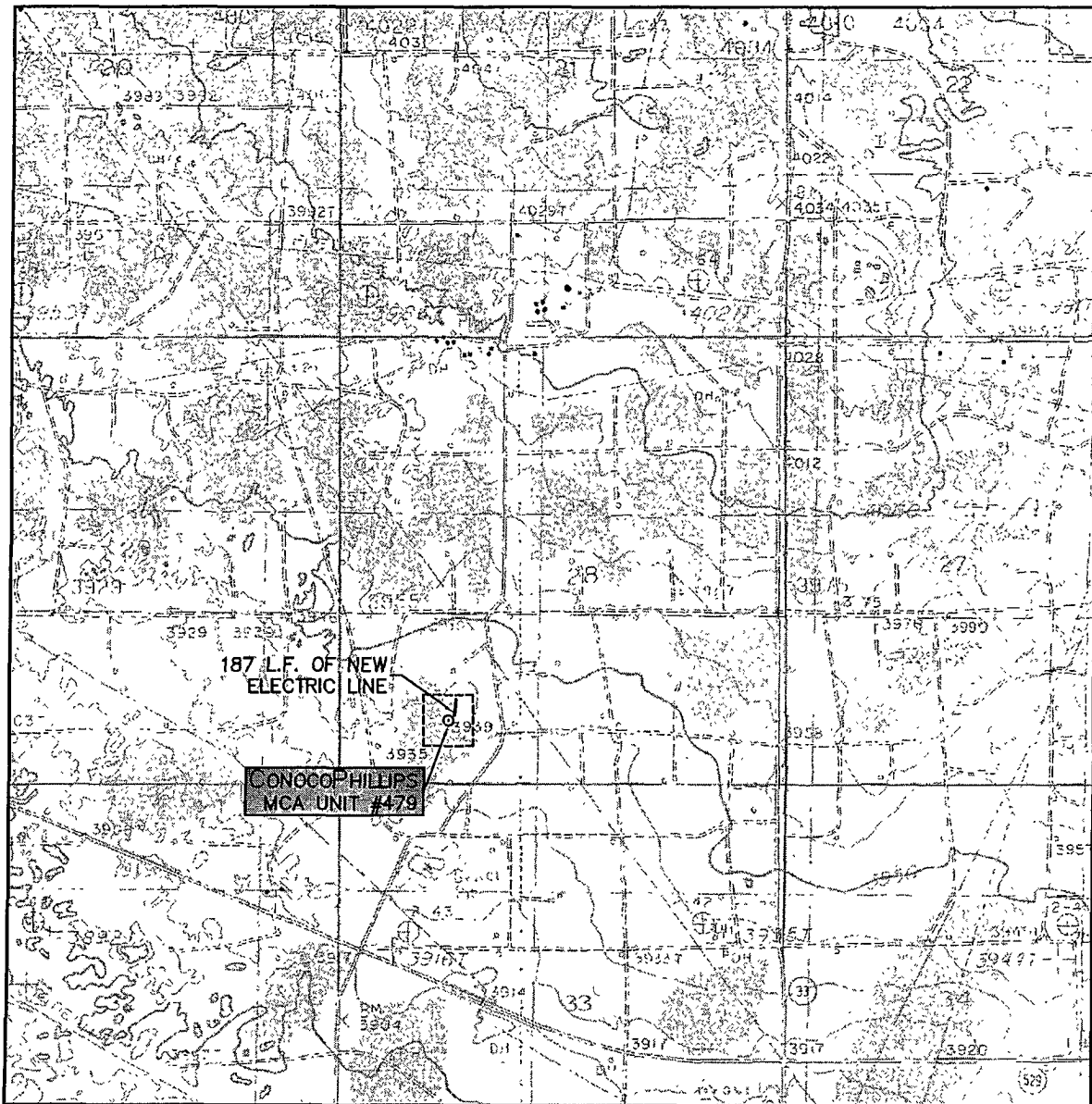
LEASE MCA UNIT

U.S.G.S. TOPOGRAPHIC MAP  
MALJAMAR



110 W. LOUISIANA, STE. 110  
MIDLAND TEXAS, 79701  
(432) 687-0865 - (432) 687-0868 FAX

# LOCATION VERIFICATION MAP



SCALE: 1" = 2000'

CONTOUR INTERVAL:  
MALJAMAR - 5'

SEC. 28 TWP. 17-S RGE. 32-E

SURVEY N.M.P.M.

COUNTY LEA

DESCRIPTION 746' FSL & 1270' FWL

ELEVATION 3935'

OPERATOR CONOCOPHILLIPS

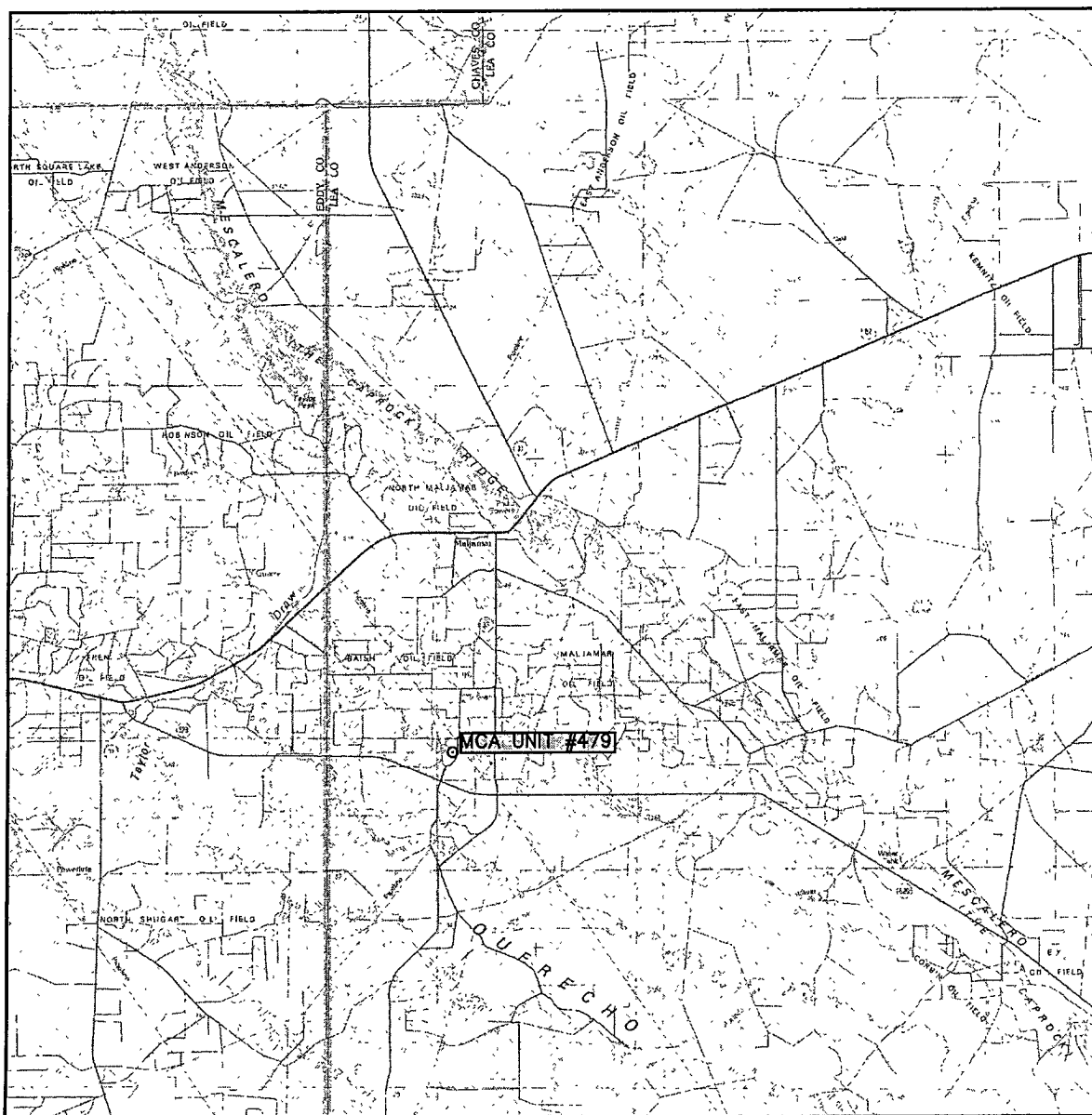
LEASE MCA UNIT

U.S.G.S. TOPOGRAPHIC MAP  
MALJAMAR



110 W. LOUISIANA, STE. 110  
MIDLAND TEXAS, 79701  
(432) 687-0865 - (432) 687-0868 FAX

# VICINITY MAP



SCALE: 1" = 3 MILES

SEC. 28 TWP. 17-S RGE. 32-E

SURVEY N.M.P.M.

COUNTY LEA

DESCRIPTION 746' FSL & 1270' FWL

ELEVATION 3935'

OPERATOR CONOCO PHILLIPS

LEASE MCA UNIT



110 W. LOUISIANA, STE. 110  
MIDLAND TEXAS, 79701  
(432) 687-0865 - (432) 687-0868 FAX