

DISTRICT I  
1625 N. FRENCH DR., HOBBS, NM 88240

DISTRICT II  
1301 W. GRAND AVENUE, ARTESIA, NM 88210

DISTRICT III  
1000 Rio Brazos Rd., Aztec, NM 87410

DISTRICT IV  
1220 S. ST. FRANCIS DR., SANTA FE, NM 87505

RECEIVED

APR 27 2009

HOBBS

State of New Mexico  
Energy, Minerals and Natural Resources Department

OIL CONSERVATION DIVISION  
1220 SOUTH ST. FRANCIS DR.  
Santa Fe, New Mexico 87505

Form C-102  
Revised October 12, 2005  
Submit to Appropriate District Office  
State Lease - 4 Copies  
Fee Lease - 3 Copies

WELL LOCATION AND ACREAGE DEDICATION PLAT

☐ AMENDED REPORT

API Number 30-105-27987	Pool Code 10540	Pool Name Cato, San Andres
Property Code 303560	Property Name CSAU	Well Number 546
OGRID No. 248802	Operator Name CANO PETRO OF NEW MEXICO	Elevation 4153

Surface Location

UL or lot No. 0	Section 11	Township 8-S	Range 30-E	Lot Idn	Feet from the 1220	North/South line SOUTH	Feet from the 2562	East/West line EAST	County CHAVES
--------------------	---------------	-----------------	---------------	---------	-----------------------	---------------------------	-----------------------	------------------------	------------------

Bottom Hole Location If Different From Surface

UL or lot No.	Section	Township	Range	Lot Idn	Feet from the	North/South line	Feet from the	East/West line	County
---------------	---------	----------	-------	---------	---------------	------------------	---------------	----------------	--------

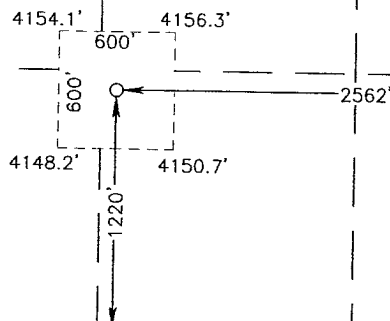
Dedicated Acres	Joint or Infill	Consolidation Code	Order No.
-----------------	-----------------	--------------------	-----------

NO ALLOWABLE WILL BE ASSIGNED TO THIS COMPLETION UNTIL ALL INTERESTS HAVE BEEN CONSOLIDATED  
OR A NON-STANDARD UNIT HAS BEEN APPROVED BY THE DIVISION

GEODETIC COORDINATES  
NAD 27 NME

Y=957204.1 N  
X=647346.6 E

LAT.=33.630361° N  
LONG.=103.849256° W



OPERATOR CERTIFICATION

I hereby certify that the information herein is true and complete to the best of my knowledge and belief, and that this organization either owns a working interest or unleased mineral interest in the land including the proposed bottom hole location or has a right to drill this well at this location pursuant to a contract with an owner of such mineral or working interest, or to a voluntary pooling agreement or a compulsory pooling order heretofore entered by the division.

Signature: *Cindy Chavez* Date: 11/1/08  
Printed Name: CINDY CHAVEZ

SURVEYOR CERTIFICATION

I hereby certify that the well location shown on this plat was plotted from field notes of actual surveys made by me or under my supervision, and that the same is true and correct to the best of my belief.

Date Surveyed: 10/27/07  
Signature: *Ronald J. Eidson*  
Professional Surveyor: 3239  
Certificate No.: GARY EIDSON 12641  
RONALD J. EIDSON 3239