

# RECEIVED

DISTRICT I  
1625 N. French Dr., Hobbs, NM 88240

DISTRICT II  
1301 W. Grand Avenue, Artesia, NM 88201

DISTRICT III  
1000 Rio Brazos Rd., Aztec, NM 87410

DISTRICT IV  
1220 S. St. Francis Dr., Santa Fe, NM 87505

State of New Mexico  
Energy, Minerals and Natural Resources Department

Form C-102  
Revised October 12, 2005

Submit to Appropriate District Office  
State Lease - 4 Copies  
Fee Lease - 3 Copies

CONSERVATION DIVISION  
1220 South St. Francis Dr.  
Santa Fe, New Mexico 87505

## WELL LOCATION AND ACREAGE DEDICATION PLAT

☐ AMENDED REPORT

API Number	Pool Code	Pool Name
Property Code	Property Name BADA BING "23" STATE	Well Number 1H
OGRID No.	Operator Name CAZA OPERATING, LLC	Elevation 4210'

### Surface Location

UL or lot No. M	Section 23	Township 10 S	Range 33 E	Lot Idn	Feet from the 660	North/South line SOUTH	Feet from the 660	East/West line WEST	County LEA
--------------------	---------------	------------------	---------------	---------	----------------------	---------------------------	----------------------	------------------------	---------------

### Bottom Hole Location If Different From Surface

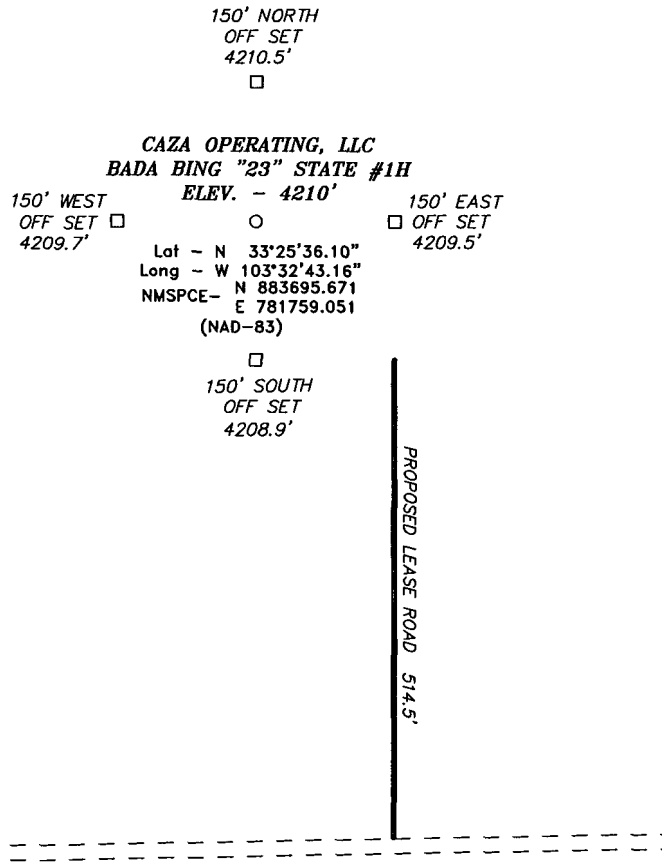
UL or lot No. D	Section 23	Township 10 S	Range 33 E	Lot Idn	Feet from the 510	North/South line NORTH	Feet from the 660	East/West line WEST	County LEA
--------------------	---------------	------------------	---------------	---------	----------------------	---------------------------	----------------------	------------------------	---------------

Dedicated Acres	Joint or Infill	Consolidation Code	Order No.
-----------------	-----------------	--------------------	-----------

NO ALLOWABLE WILL BE ASSIGNED TO THIS COMPLETION UNTIL ALL INTERESTS HAVE BEEN CONSOLIDATED  
OR A NON-STANDARD UNIT HAS BEEN APPROVED BY THE DIVISION

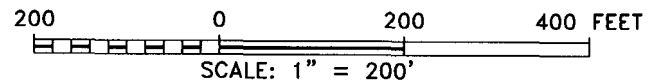
	<p><b>OPERATOR CERTIFICATION</b></p> <p>I hereby certify that the information contained herein is true and complete to the best of my knowledge and belief, and that this organization either owns a working interest or unleased mineral interest in the land including the proposed bottom hole location pursuant to a contract with an owner of such a mineral or working interest, or to a voluntary pooling agreement or a compulsory pooling order heretofore entered by the division.</p> <p>Signature _____ Date _____</p> <p>Printed Name _____</p>
<p><b>BOTTOM HOLE LOCATION</b> Lat - N 33°26'17.21" Long - W 103°32'42.99" NMSPCE - N 887850.946 E 781742.227 (NAD-83)</p>	<p><b>SURVEYOR CERTIFICATION</b></p> <p>I hereby certify that the well location shown on this plat was plotted from field notes of actual surveys made by me or under my supervision, and that the same is true and correct to the best of my belief.</p> <p>SEPTEMBER 2009</p> <p>Date Surveyed _____</p> <p>Signature &amp; Seal of Professional Surveyor</p> <p>Certificate No. Gary L. Jones 7977</p> <p>BASIN SURVEYS</p>

SECTION 23, TOWNSHIP 10 SOUTH, RANGE 33 EAST, N.M.P.M.,  
LEA COUNTY, NEW MEXICO.



Directions to Location:

FROM THE JUNCTION OF HWY 380 AND CO. RD. NINE, GO NORTH ON NINE FOR 4.4 MILES TO CO. RD. LANE, ON LANE GO EAST TURNING NORTH 2.6 MILES TO LEASE ROAD, ON LEASE ROAD GO EAST 0.1 MILES TO PROPOSED LEASE ROAD.



**CAZA OPERATING, LLC**

REF: BADA BING "23" STATE #1H / WELL PAD TOPO

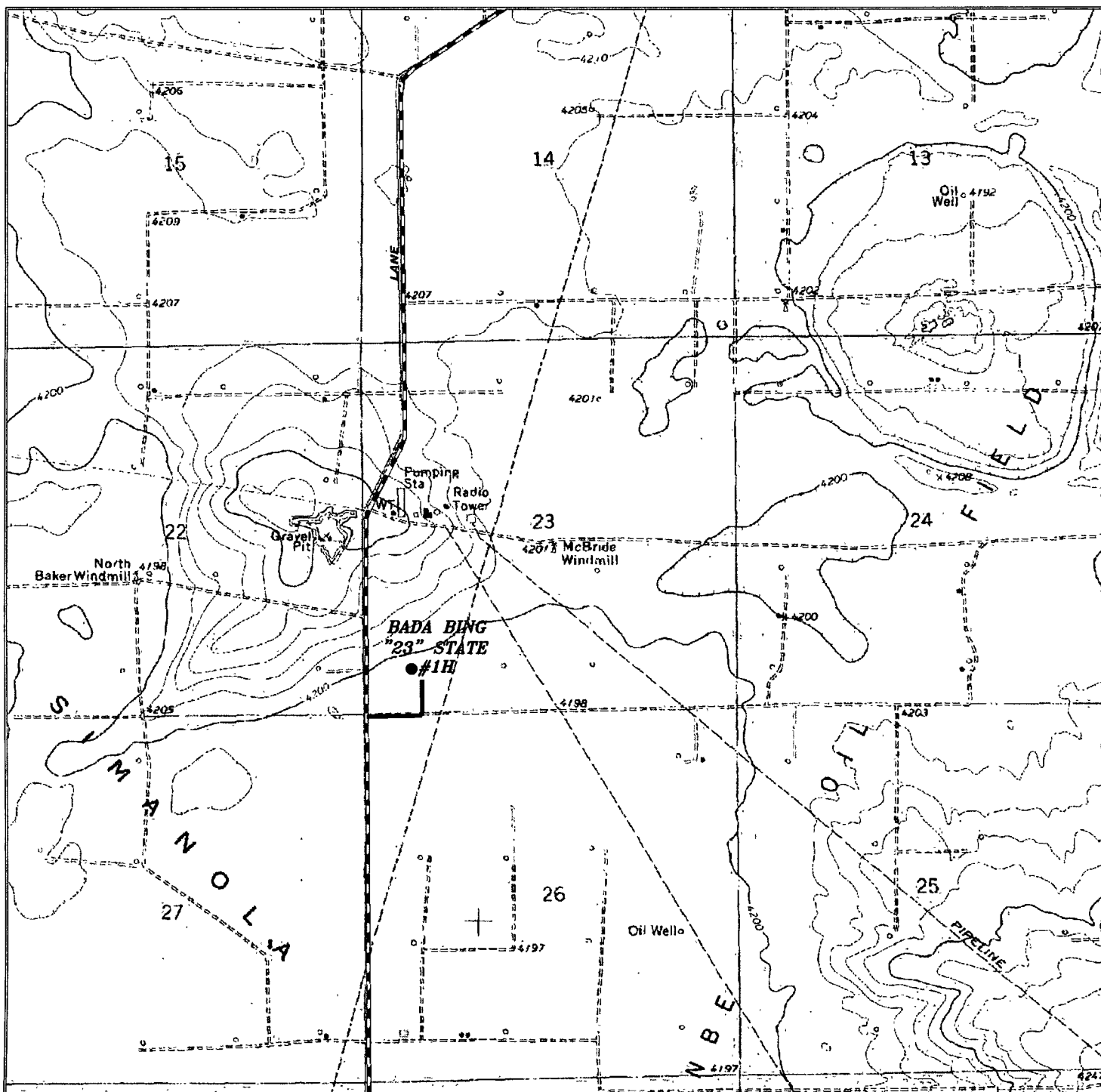
THE BADA BING "23" STATE #1H LOCATED 660'  
FROM THE SOUTH LINE AND 660' FROM THE WEST LINE OF  
SECTION 23, TOWNSHIP 10 SOUTH, RANGE 33 EAST,  
N.M.P.M., LEA COUNTY, NEW MEXICO.

**BASIN SURVEYS** P.O. BOX 1786-HOBBS, NEW MEXICO

W.O. Number: 21770 Drawn By: J. SMALL

Date: 09-25-2009 Disk: JMS 21770

Survey Date: 09-25-2009 Sheet 1 of 1 Sheets



**BADA BING "23" STATE #1H**  
 Located 660' FSL and 660' FWL  
 Section 23, Township 10 South, Range 33 East,  
 N.M.P.M., Lea County, New Mexico.

**basin**  
**surveys**  
 focused on excellence  
 in the oilfield

P.O. Box 1786  
 1120 N. West County Rd.  
 Hobbs, New Mexico 88241  
 (575) 393-7316 - Office  
 (575) 392-2206 - Fax  
 basinsurveys.com

W.O. Number: JMS 21770

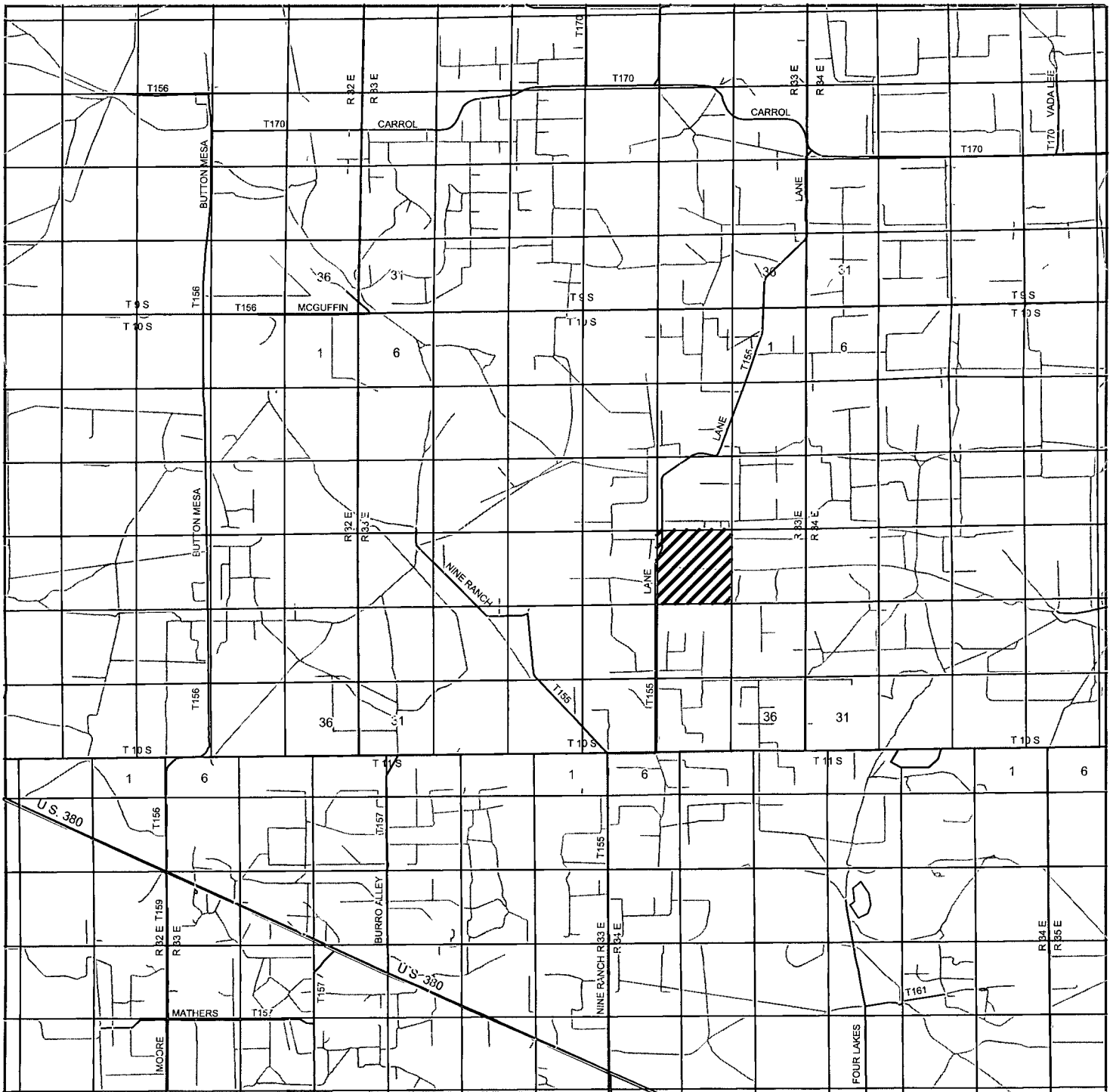
Survey Date: 09-25-2009

Scale: 1" = 2000'

Date: 09-25-2009



**CAZA**  
**OPERATING,**  
**LLC**



**BADA BING "23" STATE #1H**  
 Located 660' FSL and 660' FWL  
 Section 23, Township 10 South, Range 33 East,  
 N.M.P.M., Lea County, New Mexico.

**basin**  
**surveys**  
 focused on excellence  
 in the oilfield

P.O. Box 1786  
 1120 N. West County Rd.  
 Hobbs, New Mexico 88241  
 (575) 393-7316 - Office  
 (575) 392-2206 - Fax  
[basinsurveys.com](http://basinsurveys.com)

W.O. Number: JMS 21770

Survey Date: 09-25-2009

Scale: 1" = 2 Miles

Date: 09-25-2009



**CAZA**  
**OPERATING,**  
**LLC**



**BADA BING "23" STATE #1H**  
 Located 660' FSL and 660' FWL  
 Section 23, Township 10 South, Range 33 East,  
 N.M.P.M., Lea County, New Mexico.

**basin**  
**surveys**  
 focused on excellence  
 in the oilfield

P.O. Box 1786  
 1120 N. West County Rd.  
 Hobbs, New Mexico 88241  
 (575) 393-7316 - Office  
 (575) 392-2206 - Fax  
 basinsurveys.com

W.O. Number: JMS 21770

Scale: 1" = 2000'

YELLOW TINT - USA LAND  
 BLUE TINT - STATE LAND  
 NATURAL COLOR - FEE LAND



**CAZA**  
**OPERATING,**  
**LLC**