

State of New Mexico
Energy, Minerals and Natural Resources

Form C-103

May 27, 2004

RECEIVED CONSERVATION DIVISION

1220 South St. Francis Dr.

Santa Fe, NM 87505

HOBBSD

WELL API NO.

30-025-23928

5. Indicate Type of Lease

STATE ☒ FEE ☐

6. State Oil & Gas Lease No.

7. Lease Name or Unit Agreement
Name

SOUTH JUSTIS UNIT

8. Well Number 17

9. OGRID Number 240974

10. Pool name or Wildcat

JUSTIS-BLINEBRY-TUBB-DRINKARD

SUNDRY NOTICES AND REPORTS ON WELLS

(DO NOT USE THIS FORM FOR PROPOSALS TO DRILL OR TO DEEPEN OR PLUG BACK TO A DIFFERENT RESERVOIR. USE "APPLICATION FOR PERMIT" (FORM C-101) FOR SUCH PROPOSALS.)

1. Type of Well: Oil Well ☒ Gas Well ☒ Other ☒

2. Name of Operator LEGACY RESERVES OPERATING LP

3. Address of Operator P.O. BOX 10848
MIDLAND, TX 79702

4. Well Location

Unit Letter K : 2310 feet from the SOUTH line and 1993 feet from the WEST line
Section 13 Township T25S Range R37E NMPM LEA County11. Elevation (Show whether DR, RKB, RT, GR, etc.)
3087' GLPit or Below-grade Tank Application ☐ or Closure ☐

Pit type _____ Depth to Groundwater _____ Distance from nearest frsh water well _____ Distance from nearest surface water _____

Pit Liner Thickness:

mil

Below-Grade Tank: Volume _____ bbls; Construction Material _____

12. Check Appropriate Box to Indicate Nature of Notice, Report or Other Data

NOTICE OF INTENTION TO:

PERFORM REMEDIAL WORK ☐ PLUG AND ABANDON ☒
TEMPORARILY ABANDON ☐ CHANGE PLANS ☐
PULL OR ALTER CASING ☐ MULTIPLE COMPL ☐

SUBSEQUENT REPORT OF:

REMEDIAL WORK ☐ ALTERING CASING ☐
COMMENCE DRILLING OPNS. ☐ P AND A ☐
CASING/CEMENT JOB ☐OTHER: ☐OTHER: ☐13. Describe proposed or completed operations. (Clearly state all pertinent details, and give pertinent dates, including estimated date of starting any proposed work). SEE RULE 1103. F
diagram of proposed completion or recompletion.

Estimated Start Date: 12/1/09

1. MIRU plugging company NU 2000# min. BOP.
2. RIH w/ tbg to 5040'. Tag CIBP.
3. Plug #1 (Perforation Plug) - Spot 25 sxs Class C cmt from 4895'-5040' (145') No tag required
4. Circ hole w/ 9.0 PPG mud laden fluid (50 # gel/100 bbls brine)
5. Plug #2 (DV Tool Plug) - Spot 25 sxs Class C cmt from 4405'-4550' (145'). No tag required.
6. Perforate 7" casing at 1500'.
7. RIH w/ tbg and pkr. Set pkr +/- 1255'. SPOT 25sxs @ 2200' - 2300'
8. Plug #3 (Salt Zone Plug) - Squeeze 47 sxs Class C cmt from 1355'-1500' (150') WOC Tag plug.
9. Perforate 7" casing at 986'
10. RIH w/ tbg and pkr. Set pkr +/- 736'.
11. Plug #4 (Casing Shoe Plug) - Squeeze 47 sxs Class C cmt from 836'-986' (150'). WOC, Tag plug.
12. Plug #5 (Surface Plug) - Spot 20 sxs Class C cmt from 0-60' (60'). Perf @ 60'. Circ cmt. to surface (in/out)
13. POH tbg
14. Top off w/cmt at surface to fillup csg.
15. Cut off well head. Weld on dry hole marker Backfill cellar as necessary. Clean location RDM

The Oil Conservation Division **Must be notified 24 hours prior** to the beginning of plugging operations.I hereby certify that the information above is true and complete to the best of my knowledge and belief. I further certify that any pit or below-grade tank has been/will be constructed or closed according to NMOCD guidelines ☐, a general permit ☐ or an (attached) alternative OCD-approved plan ☐.SIGNATURE Kent Williams

TITLE: SENIOR ENGINEER

DATE 10/19/09

Type or print name KENT WILLIAMS

E-mail address:

Telephone No. (432)689-5200

For State Use Only

APPROVED

BY: Mark WhitakerTITLE Compliance Officer

DATE 10/21/2009

Conditions of Approval (if any):

WELLBORE SCHEMATIC

South Justis Unit F #17

(Chevron/ARCO Learcy McBuffington #15)

2310' FSL & 1993' FWL (K)

Sec 13, T-25S, R-37E, Lea Co., NM

API 30-025-23928

GL 3087'

Spudded 12/02/71

Completed 03/23/72

Plug #5 - Surface Plug
20 sxs. 0'-60' (60')

Plug #4 - Csg Shoe Plug
47 sxs. 836'-986' (150')
Perforate - 986' 12-1/4" Hole.
Tag Plug.
9-5/8" 32.3#, H-40 casing @ 936'.
Set w/ 350 sxs cmt. Circ.

Plug #3 - Csg Plug
47 sxs. 1355'-1500' (150')
Perforate 1500'
Tag Plug.

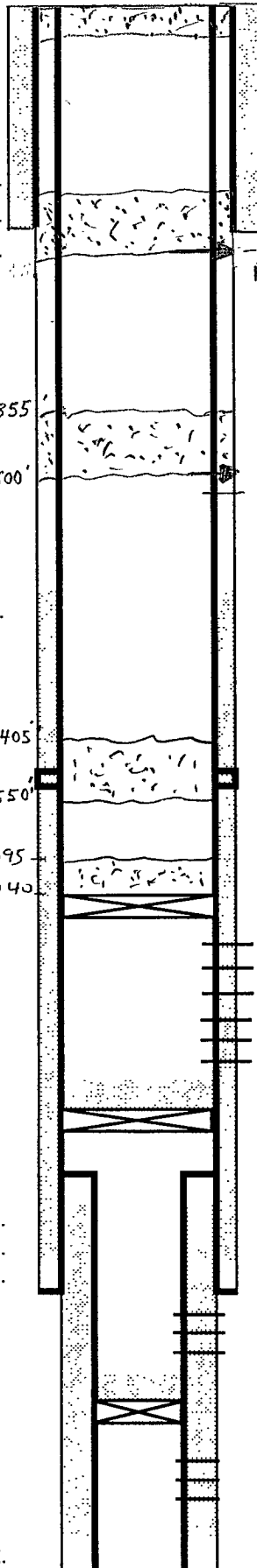
TOC @ 2170' by TS.

Plug #2 - DV Tool Plug
25 sxs DV tool - 4500'
4405'-4550' (145')
No tag required.

Plug #1 - Perforation Plug
25 sxs, 4895'-5040' (145')
No tag required.

8-3/4" hole.
7", 20&23#, K-55 casing @ 6638'.
Set w/ 915 sxs cmt.

4-1/2", 9.5#, K-55 csg @ 7037'
Cmt w/ w 2100 sxs cmt.



836'
986' Perforate
1500' - Perforate
1532' - Top Salt Zone

Proposed PXA

CIBP @ 5040' - 12/16/98

Blinbry-Tubb/Drinkard

Perfs @ 5090' to 6096'.

Set CIBP @ 6420 w/cmt @ 6414'

Top of Liner @ 6491'.

Abo Perfs @ 6825' to 6831'.

Cmt Ret @ 6875' w/5 bbls cmt on top.

Sqzd Fusselman Perfs 6922' to 7008'.

TD @ 7040'.