

UNITED STATES
DEPARTMENT OF THE INTERIOR
BUREAU OF LAND MANAGEMENT

OCD-HOBBS

FORM APPROVED
OMB No. 1004-0135
Expires: January 31, 2004**SUNDRY NOTICES AND REPORTS ON WELLS**
*Do not use this form for proposals to drill or to re-enter an abandoned well. Use Form 3160-3 (APD) for such proposals.***SUBMIT IN TRIPLICATE - Other instructions on reverse side**1. Type of Well
☐ Oil Well ☒ Gas Well ☐ Other2. Name of Operator
Mewbourne Oil Company 147443a. Address
PO Box 5270 Hobbs, NM 882403b. Phone No. (include area code)
575-393-59054. Location of Well (Footage, Sec., T, R., M., or Survey Description)
990' FSL & 990' FEL, Sec 14-T20S-R34E Unit P

5. Lease Serial No.

NMNM-123523

6. If Indian, Allottee or Tribe Name

7. If Unit or CA/Agreement, Name and/or No.

8. Well Name and No.

Marathon Road 14 Fed #1

9. API Well No.

30-025-39546

10. Field and Pool, or Exploratory Area

Lea; Penn Gas

11. County or Parish, State

Lea County, NM

12. CHECK APPROPRIATE BOX(ES) TO INDICATE NATURE OF NOTICE, REPORT, OR OTHER DATA

TYPE OF SUBMISSION

TYPE OF ACTION

☐ Notice of Intent☒ Subsequent Report☐ Final Abandonment Notice☐ Acidize☐ Alter Casing☐ Casing Repair☐ Change Plans☐ Convert to Injection☐ Deepen☐ Fracture Treat☐ New Construction☐ Plug and Abandon☐ Plug Back☐ Production (Start/Resume)☐ Reclamation☐ Recomplete☐ Temporarily Abandon☐ Water Disposal☐ Water Shut-Off☐ Well Integrity☒ Other Spud & csg

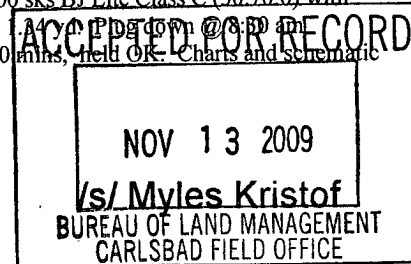
3. Describe Proposed or Completed Operation (clearly state all pertinent details, including estimated starting date of any proposed work and approximate duration thereof. If the proposal is to deepen directionally or recompleat horizontally, give subsurface locations and measured and true vertical depths of all pertinent markers and zones. Attach the Bond under which the work will be performed or provide the Bond No. on file with BLM/BIA. Required subsequent reports shall be filed within 30 days following completion of the involved operations. If the operation results in a multiple completion or recompleat in a new interval, a Form 3160-4 shall be filed once testing has been completed. Final Abandonment Notices shall be filed only after all requirements, including reclamation, have been completed, and the operator has determined that the site is ready for final inspection.)

10/30/09...MI & spud 17 1/2" hole. TD hole at 1601'. Ran 1601' 13 3/8" 61# J55 BT&C csg. Cemented with 1000 sks BJ Lite Class C (30-70-0) with additives mixed @ 12.8 #/g w/ 1.77 yd. Tail w/400 sks Class C with 1% CaCl2. Mixed @ 14.8 #/g w/ 1.4 yd. Tail down @ 8.00 am 11/03/09. Circ 125 sks to pit. WOC 18 hrs. At 3:00 am 11/04/09, tested BOPE & csg to 1500# for 30 mins, field OK. Charts and schematic attached. Drilled out with 12 1/4" bit.

RECEIVED

NOV 17 2009

HOBBSOCD

14. I hereby certify that the foregoing is true and correct
Name (Printed/Typed)

Jackie Lathan

Title Hobbs Regulatory

Signature

Date 11/06/09

THIS SPACE FOR FEDERAL OR STATE OFFICE USE

Approved by (Signature)

DISTRICT 1 SUPERVISOR
(Printed/Typed)

Title NOV 18 2009

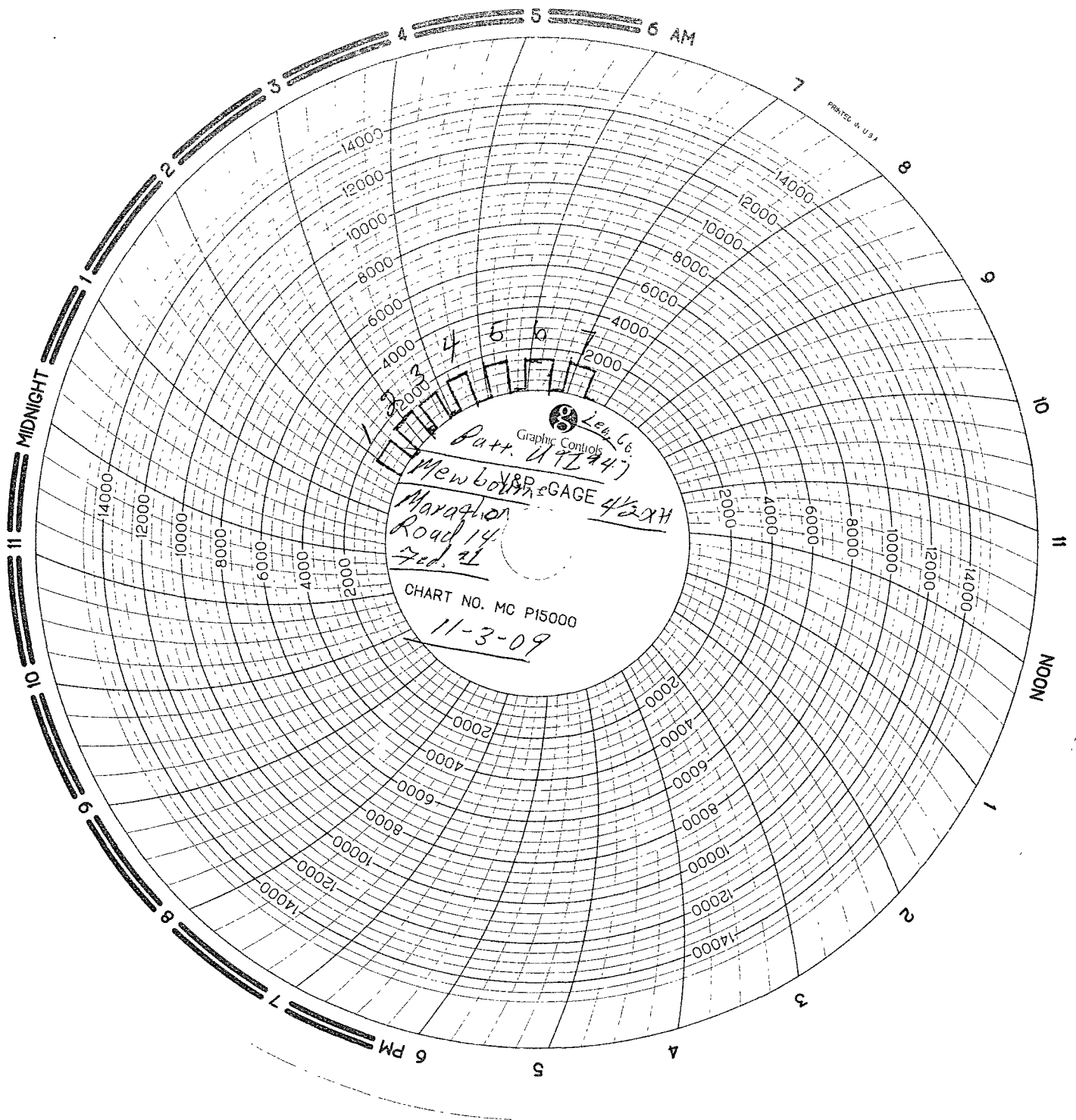
Conditions of approval, if any, are attached. Approval of this notice does not warrant or certify that the applicant holds legal or equitable title to those rights in the subject lease which would entitle the applicant to conduct operations thereon.

Office

Date

Title 18 U.S.C. Section 1001 and Title 43 U.S.C. Section 1212, make it a crime for any person knowingly and willfully to make to any department or agency of the United States any false, fictitious or fraudulent statements or representations as to any matter within its jurisdiction.

(Continued on next page)



MAN WELDING SERVICES, INC

Company Mewburne Date 11-3-19
Lease Marathon Road 14 1/2 mi. N County Lea
Drilling Contractor Patt. #47 Plug & Drill Pipe Size _____

Accumulator Function Test - OO&GO#2

To Check - USABLE FLUID IN THE NITROGEN BOTTLES (III.A.2.c.i. or ii or iii)

- Make sure all rams and annular are open and if applicable HCR is closed.
- Ensure accumulator is pumped up to working pressure! **(Shut off all pumps)**
 1. Open HCR Valve. (If applicable)
 2. Close annular.
 3. ~~Close all pipe rams.~~
 4. Open one set of the pipe rams to simulate closing the blind ram.
 5. For 3 ram stacks, open the annular to achieve the 50+ % safety factor. (5M and greater systems).
 6. **Record remaining pressure 1950 psi. Test Fails if pressure is lower than required.**
- a. {950 psi for a 1500 psi system} b. {1200 psi for a 2000 & 3000 psi system }
- 7. If annular is closed, open it at this time and close HCR.

To Check - PRECHARGE ON BOTTLES OR SPHERICAL (III.A.2.d.)

- Start with manifold pressure at, or above, maximum acceptable pre-charge pressure:
 - a. {800 psi for a 1500 psi system} b. {1100 psi for 2000 and 3000 psi system}
- 1. Open bleed line to the tank, slowly. **(gauge needle will drop at the lowest bottle pressure)**
- 2. Close bleed line. Barely bump electric pump and see what pressure the needle jumps up to.
- 3. **Record pressure drop 1222 psi. Test fails if pressure drops below minimum.**
- **Minimum:** a. {700 psi for a 1500 psi system} b. {900 psi for a 2000 & 3000 psi system}

To Check - THE CAPACITY OF THE ACCUMULATOR PUMPS (III.A.2.f.)

- Isolate the accumulator bottles or spherical from the pumps & manifold.
- Open the bleed off valve to the tank, {manifold psi should go to 0 psi} close bleed valve.
 1. Open the HCR valve, {if applicable}
 2. Close annular
 3. With **pumps** only, time how long it takes to regain the required manifold pressure.
 4. **Record elapsed time 643. Test fails if it takes over 2 minutes.**
- a. {950 psi for a 1500 psi system} b. {1200 psi for a 2000 & 3000 psi system}



INVOICE

B 10337

Figure 1: Schematic diagram of the architecture of the proposed system. The diagram is divided into three main sections: a top section showing the system components (ANNULAR 15, RAMS 12, RAMS 13, RAMS 14), a middle section showing the Rotating Head (27) and its connection to the RAMS, and a bottom section showing the Rotating Head (27) and its connection to the RAMS. The diagram includes various numbered components (1-26) and labels (17, 18, 19, 20, 21, 22, 23, 24) indicating different parts of the system.

3 HR@ 7000.00
HR@
Mileage 72 @ 722.50

SUB TOTAL 1272.00
TAX \$57.51
TOTAL 1329.51