

UNITED STATES  
DEPARTMENT OF THE INTERIOR  
BUREAU OF LAND MANAGEMENT

OCD-HOBBS

FORM APPROVED  
OMB No 1004-0135  
Expires: January 31, 2004

**SUNDRY NOTICES AND REPORTS ON WELLS**  
*Do not use this form for proposals to drill or to re-enter an abandoned well. Use Form 3160-3 (APD) for such proposals.*

**SUBMIT IN TRIPLICATE - Other instructions on reverse side**

1. Type of Well

☐ Oil Well ☒ Gas Well ☐ Other

2. Name of Operator

Mewbourne Oil Company 14744

3a. Address

PO Box 5270 Hobbs, NM 88240

3b. Phone No (include area code)

575-393-5905

4. Location of Well (Footage, Sec., T, R., M., or Survey Description)

870' FNL & 1125' FWL, Sec 23-T20S, R35E Unit D

5. Lease Serial No.

NM-27205

6. If Indian, Allottee or Tribe Name

7. If Unit or CA/Agreement, Name and/or No

8. Well Name and No.

Upland 23 Fed Com #1

9. API Well No

30-025-39153

10. Field and Pool, or Exploratory Area

West Osudo Morrow

11. County or Parish, State

Lea County, NM

**12. CHECK APPROPRIATE BOX(ES) TO INDICATE NATURE OF NOTICE, REPORT, OR OTHER DATA**

**TYPE OF SUBMISSION**

**TYPE OF ACTION**

☐ Notice of Intent

☒ Subsequent Report

☐ Final Abandonment Notice

☐ Acidize

☐ Alter Casing

☐ Casing Repair

☐ Change Plans

☐ Convert to Injection

☐ Deepen

☐ Fracture Treat

☐ New Construction

☐ Plug and Abandon

☐ Plug Back

☐ Production (Start/Resume)

☐ Reclamation

☐ Recomplete

☐ Temporarily Abandon

☐ Water Disposal

☐ Water Shut-Off

☐ Well Integrity

☒ Other Csg, Cmt

3. Describe Proposed or Completed Operation (clearly state all pertinent details, including estimated starting date of any proposed work and approximate duration thereof. If the proposal is to deepen directionally or recompleat horizontally, give subsurface locations and measured and true vertical depths of all pertinent markers and zones. Attach the Bond under which the work will be performed or provide the Bond No. on file with BLM/BIA. Required subsequent reports shall be filed within 30 days following completion of the involved operations. If the operation results in a multiple completion or recompleat in a new interval, a Form 3160-4 shall be filed once testing has been completed. Final Abandonment Notices shall be filed only after all requirements, including reclamation, have been completed, and the operator has determined that the site is ready for final inspection.)

11/01/09 ...TD'd 12 1/4" hole @ 5605'. Ran 5605' of 9 5/8" 40# N80/J55 LT&C csg. Cemented with 1800 sks Class "C" Lite (30:70:0) with additives. Mixed @ 12.8 #/g with 1.77 cf/sk yd. Tail with 400 sks Class "C" Neat. Mixed @ 14.8 #/g with 1.33 cf/sk yd. Plug down at 11:15 pm 10/31/09. Circulate 120 sks to pit. WOC 18 hrs. Tested BOPE to 5000# and annular to 2500#. At 12:30 am on 11/02/09, tested 9 5/8" casing to 1500# for 30 mins, held OK. Tested casing shoe to 12.5 PPG MWE. Chart and schematic attached. Drilled out with 8 3/4" bit.

RECEIVED

NOV 17 2009

HOBBSOCD

ACCEPTED FOR RECORD

NOV 10 2009

/s/ Chris Walls

BUREAU OF LAND MANAGEMENT  
CARLSBAD FIELD OFFICE

14. I hereby certify that the foregoing is true and correct

Name (Printed/Typed)

Jackie Lathan

Title Hobbs Regulatory

Signature

Date 11/04/09

THIS SPACE FOR FEDERAL OR STATE OFFICE USE

Approved by (Signature)

DISTRICT 1 SUPERVISOR

Title: NOV 18 2009

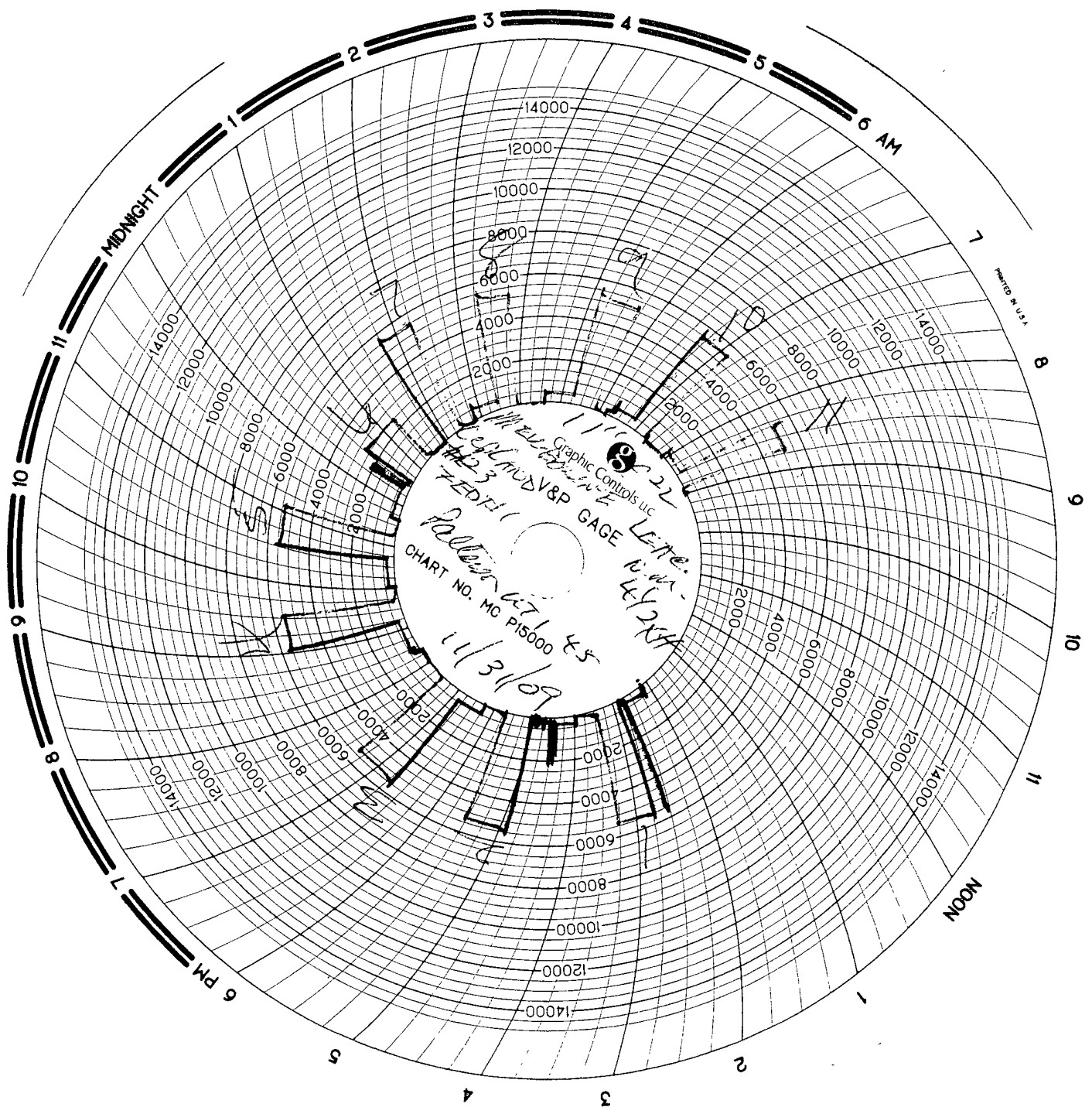
Conditions of approval, if any, are attached. Approval of this notice does not warrant or certify that the applicant holds legal or equitable title to those rights in the subject lease which would entitle the applicant to conduct operations thereon.

Office

Date

Title 18 U.S.C. Section 1001 and Title 43 U.S.C. Section 1212, make it a crime for any person knowingly and willfully to make to any department or agency of the United States any false, fictitious or fraudulent statements or representations as to any matter within its jurisdiction.

(Continued on next page)



# MAN WELDING SERVICES, INC

Company MEWBORNE Date 11/1/09  
Lease UPLAND 23 7th #1 County Lea Co N.M.  
Drilling Contractor Patterson UTI 45 Plug & Drill Pipe Size 11" C22 4 1/2 XH

## Accumulator Function Test - OO&GO#2

To Check - USABLE FLUID IN THE NITROGEN BOTTLES (III.A.2.c.i. or ii or iii)

- Make sure all rams and annular are open and if applicable HCR is closed.
- Ensure accumulator is pumped up to working pressure! (Shut off all pumps)  
 $17" \times 7.7 = 1.319 \text{ gal}$   
 $14 \times 36 \times 130 = 2809 \text{ gal} = 7.7 \text{ psi}$   
 $18 - 15 \text{ gal Bottles} = 135 \text{ gal}$   
 $+ 131$   
266 usable fluid
- 1. Open HCR Valve. (If applicable)
- 2. Close annular.
- 3. Close **all** pipe rams.
- 4. Open one set of the pipe rams to simulate closing the blind ram.
- 5. For 3 ram stacks, open the annular to achieve the 50+ % safety factor. (5M and greater systems).
- 6. Record remaining pressure 1800 psi. Test Fails if pressure is lower than required.
- a. {950 psi for a 1500 psi system} b. {1200 psi for a 2000 & 3000 psi system}
- 7. If annular is closed, open it at this time and close HCR.

To Check - PRECHARGE ON BOTTLES OR SPHERICAL (III.A.2.d.)

Remote on Floor  
Mech Locks OK

- Start with manifold pressure at, or above, maximum acceptable pre-charge pressure:  
a. {800 psi for a 1500 psi system} b. {1100 psi for 2000 and 3000 psi system}  
@ Start up
- 1. Open bleed line to the tank, slowly. (gauge needle will drop at the lowest bottle pressure)
- 2. Close bleed line. Barely bump electric pump and see what pressure the needle jumps up to.
- 3. Record pressure drop 1000 psi. Test fails if pressure drops below minimum.
- Minimum: a. {700 psi for a 1500 psi system} b. {900 psi for a 2000 & 3000 psi system}

To Check - THE CAPACITY OF THE ACCUMULATOR PUMPS (III.A.2.f.)

- Isolate the accumulator bottles or spherical from the pumps & manifold.
- Open the bleed off valve to the tank, {manifold psi should go to 0 psi} close bleed valve.
- 1. Open the HCR valve, {if applicable}
- 2. Close annular
- 3. With **pumps** only, time how long it takes to regain the required manifold pressure.
- 4. Record elapsed time 48 sec. Test fails if it takes over 2 minutes.
- a. {950 psi for a 1500 psi system} b. {1200 psi for a 2000 & 3000 psi system}



# INVOICE

**B 10398**

ANNULAR 15

\_\_\_\_\_ RAMS 12

\_\_\_\_\_ RAMS 13

\_\_\_\_\_ RAMS 14

Diagram illustrating a rotating head mechanism. A horizontal line is shown with a curved surface below it. A dashed line indicates the rotation of the head. The angle between the horizontal line and the dashed line is labeled 27°. The text "Rotating Head" is written below the diagram.

[illegible]

8 HR@ 1000<sup>00</sup> = 1000<sup>00</sup>  
HR@  
Mileage 120 @ 100<sup>00</sup> 120<sup>00</sup>  
MASTER PRINTERS 575 396 3661 1120<sup>00</sup>

SUB TOTAL	11.20
TAX	60
TOTAL	11.80