

New Mexico Oil Conservation Division, District I
1625 N. French Drive
Hobbs, NM 88240

Form 3160-5
(June 1990)

UNITED STATES
DEPARTMENT OF THE INTERIOR
BUREAU OF LAND MANAGEMENT

RECEIVED

NOV 24 2009

SUNDRY NOTICES AND REPORTS ON WELLS

Do not use this form for proposals to drill or to deepen or reentry to a different reservoir
Use "APPLICATION FOR PERMIT—" for such proposals

SUBMIT IN TRIPLICATE

1 Type of Well

☒ Oil Well ☐ Gas Well ☐ Other

2 Name of Operator

Mack Energy Corporation

3 Address and Telephone No

P.O. Box 960 Artesia, NM 88211-0960

(575)748-1288

4 Location of Well (Footage, Sec., T., R., M. or Survey Description)

875 FSL & 330 FEL, Sec. 29 T15S R30E

FORM APPROVED

Budget Bureau No. 1004-0135

Expires March 31, 1993

5 Lease Designation and Serial No

NMNM-119274

6 If Indian, Allottee or Tribe Name

7 If Unit or CA, Agreement Designation

8 Well Name and No

Peery Federal #6

9 API Well No

30-005-29074

10 Field and Pool, or Exploratory Area

Wildcat; Abo

11 County or Parish, State

Chaves, NM

12 CHECK APPROPRIATE BOX(s) TO INDICATE NATURE OF NOTICE, REPORT, OR OTHER DATA

TYPE OF SUBMISSION

- ☒ Notice of Intent
☐ Subsequent Report
☐ Final Abandonment Notice

TYPE OF ACTION

- ☐ Abandonment
☐ Recompletion
☐ Plugging Back
☐ Casing Repair
☐ Altering Casing
☒ Other Disposal line
☐ Change of Plans
☐ New Construction
☐ Non-Routine Fracturing
☐ Water Shut-Off
☐ Conversion to Injection
☐ Dispose Water

(Note: Report results of multiple completion on Well Completion or Recompletion Report and Log form.)

13 Describe Proposed or Completed Operations (Clearly state all pertinent details, and give pertinent dates, including estimated date of starting any proposed work. If well is directionally drilled, give subsurface locations and measured and true vertical depths for all markers and zones pertinent to this work.)*

Mack Energy proposes to lay a 4" SDR-11 Poly line, on the surface, along side the existing access road from our Peery Federal #6 location to our Peery SWD #4. This line is entirely on lease.

14 I hereby certify that the foregoing is true and correct

Signed

Jerry W. Shendell

Title

Production Clerk

Date

10/14/09

(This space for Federal or State Office use)

JOHN S. SIMITZ

Approved by

Conditions of approval, if any

Title

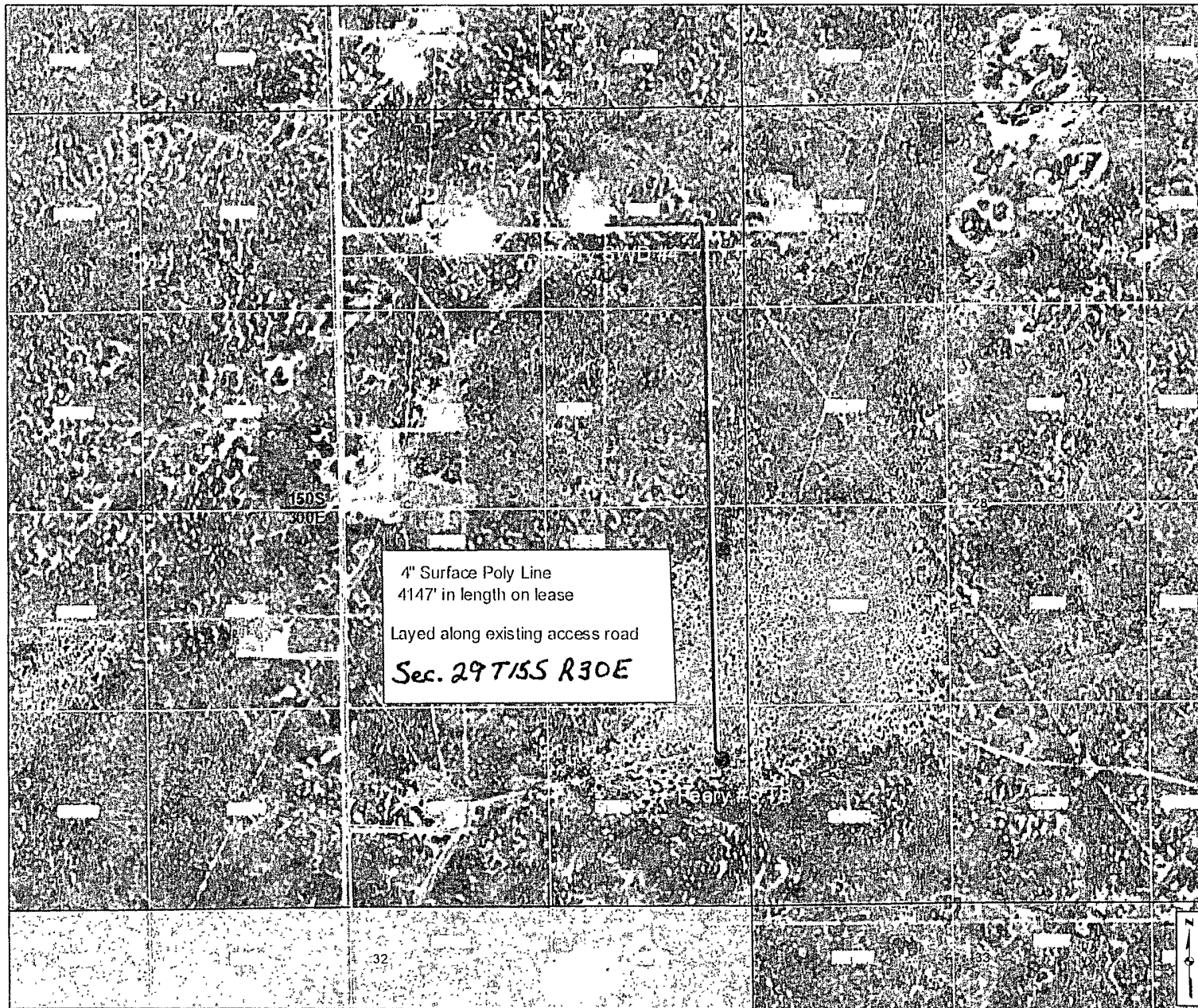
Geologist

Date

11/19/2009

Title 18 U.S.C. Section 1001 makes it a crime for any person knowingly and willfully to make to any department or agency of the United States any false, fictitious or fraudulent statements or representations as to any matter within its jurisdiction

*See Instruction on Reverse Side



Cartographic Features

- City, Town or Village
- County Seat
- - County Boundary
- ▲ SLO District Office
- ▬ SLO District Boundary
- Land Grant
- Interstate Highway
- US Highway
- NM Highway
- Local Road or Street

Federal Surface Management

- Bureau of Land Management
- Bureau of Reclamation
- Department of Agriculture
- Department of Defense
- Department of Energy
- USDA Forest Service
- Fish and Wildlife Service
- Bureau Indian Affairs
- National Park Service
- Valles Caldera National Preserve

State Trust Lands

- Surface Estate
- Subsurface Estate
- Surface and Subsurface Estate

Lease Types

- Oil and Gas Lease
- Agricultural Lease
- Commercial Lease
- Minerals Lease

New Mexico State Land Office Trust Land Status

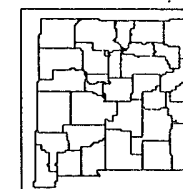
0 0.030 06 0.12 0.18 0.24
Miles

Universal Transverse Mercator Projection, Zone 13
1983 North American Datum

The New Mexico State Land Office assumes no responsibility or liability for, or in connection with, the accuracy, reliability or use of the information provided here, in State Land Office data layers or any other data layer.

Land Office Geographic Information Center
logc@slo.state.nm.us

Created On 10-14-2009 10:47:10 AM



www.nmstatelands.org