

DISTRICT I
1625 N. French Dr., Hobbs, NM 88240
DISTRICT II
1301 W. Grand Avenue, Artesia, NM 88210

DISTRICT III
1000 Rio Brazos Rd., Aztec, NM 87410

DISTRICT IV
1220 S. St. Francis Dr., Santa Fe, NM 87505

State of New Mexico
Energy, Minerals and Natural Resources Department

OIL CONSERVATION DIVISION
1220 South St. Francis Dr
Santa Fe, New Mexico 87505

Form C-102
Revised October 12, 2005

Submit to Appropriate District Office
State Lease - 4 Copies
Fee Lease 3 Copies

WELL LOCATION AND ACREAGE DEDICATION PLAT

☐ AMENDED REPORT

| | | |
|----------------------------|---|--|
| API Number 30-025-39386 | Pool Code 79335 | Pool Name Johnson Ranch; Wolfcamp (Gas) |
| Property Code 30884 | Property Name THISTLE UNIT | Well Number 10 |
| OGRID No. 6137 | Operator Name DEVON ENERGY PRODUCTION COMPANY, L.P | Elevation 3668' |

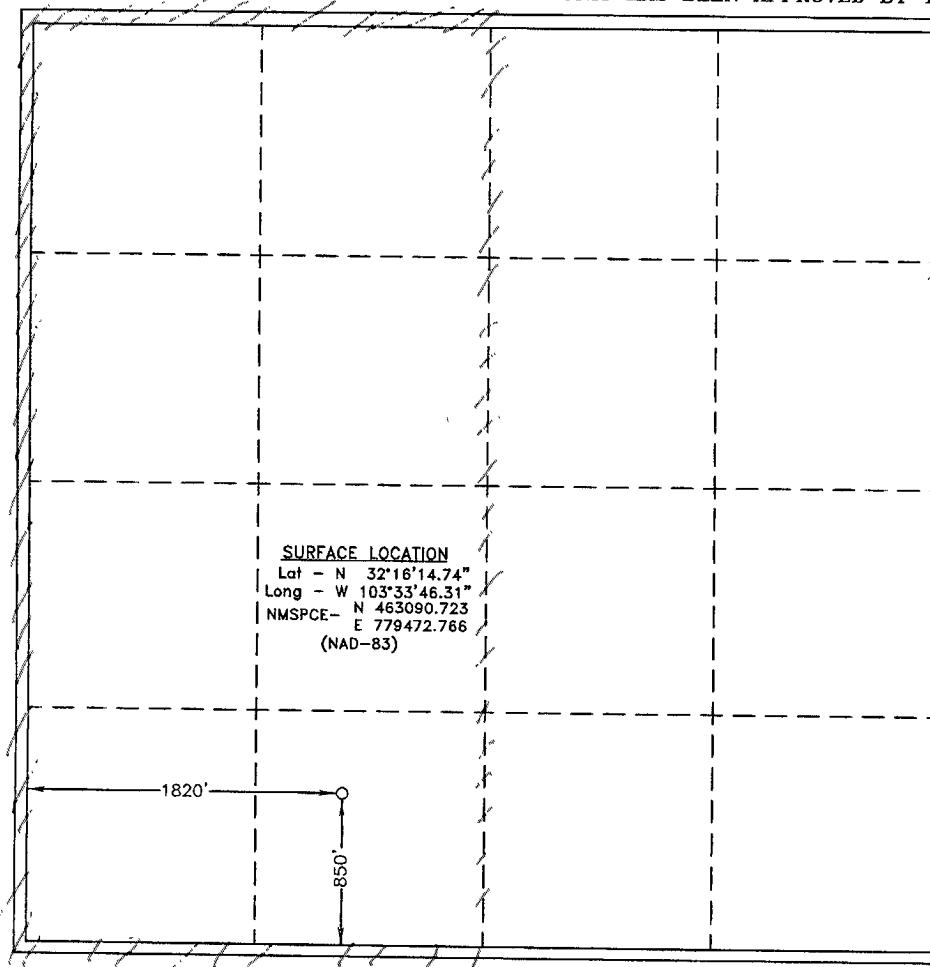
Surface Location

| | | | | | | | | | |
|--------------------|---------------|------------------|---------------|---------|----------------------|---------------------------|-----------------------|------------------------|---------------|
| UL or lot No. N | Section 27 | Township 23 S | Range 33 E | Lot Idn | Feet from the 850 | North/South line SOUTH | Feet from the 1820 | East/West line WEST | County LEA |
|--------------------|---------------|------------------|---------------|---------|----------------------|---------------------------|-----------------------|------------------------|---------------|

Bottom Hole Location If Different From Surface

| | | | | | | | | | |
|------------------------|-----------------|--------------------|-----------|---------|---------------|------------------|---------------|----------------|--------|
| UL or lot No. | Section | Township | Range | Lot Idn | Feet from the | North/South line | Feet from the | East/West line | County |
| Dedicated Acres 320 | Joint or Infill | Consolidation Code | Order No. | | | | | | |

NO ALLOWABLE WILL BE ASSIGNED TO THIS COMPLETION UNTIL ALL INTERESTS HAVE BEEN CONSOLIDATED
OR A NON-STANDARD UNIT HAS BEEN APPROVED BY THE DIVISION



OPERATOR CERTIFICATION

I hereby certify that the information contained herein is true and complete to the best of my knowledge and belief, and that this organization either owns a working interest or unleased mineral interest in the land including the proposed bottom hole location pursuant to a contract with an owner of such a mineral or working interest, or to a voluntary pooling agreement or a compulsory pooling order heretofore entered by the division.

Signature _____ Date 11/5/09

Norvella Adams

Printed Name

SURVEYOR CERTIFICATION

I hereby certify that the well location shown on this plat was plotted from field notes of actual surveys made by me or under my supervision, and that the same is true and correct to the best of my belief

Date Surveyed _____
Signature & Seal of Professional Surveyor

Certificate No. Gary L. Jones 7977

BASIN SURVEYS