

District I  
1625 N. French Dr., Hobbs, NM 88240  
District II  
1301 W. Grand Avenue, Artesia, NM 88210  
District III  
1000 Rio Brazos Road, Aztec, NM 87410  
District IV  
1220 S. St. Francis Dr., Santa Fe, NM 87505

State of New Mexico  
Energy Minerals and Natural Resources

Form C-101  
Revised June 10, 2003

Oil Conservation Division  
1220 South St. Francis Dr.  
Santa Fe, NM 87505

Submit to appropriate District Office  
State Lease - 6 Copies  
Fee Lease - 5 Copies

☐ AMENDED REPORT

APPLICATION FOR PERMIT TO DRILL, RE-ENTER, DEEPEN, PLUGBACK, OR ADD A ZONE

<sup>1</sup> Operator Name and Address Chesapeake Operating, Inc. P. O. Box 18496 Oklahoma City, OK 73154-0496		<sup>2</sup> OGRID Number 147179
<sup>3</sup> Property Code 21540	<sup>4</sup> Property Name Sumruld 18	<sup>5</sup> API Number 30-025-36538
		<sup>6</sup> Well No. 002

<sup>7</sup> Surface Location

UL or lot no.	Section	Township	Range	Lot Idn	Feet from the	North/South line	Feet from the	East/West line	County
J	18	16S	36E		1364	South	2202	East	Lea

<sup>8</sup> Proposed Bottom Hole Location If Different From Surface

UL or lot no.	Section	Township	Range	Lot Idn	Feet from the	North/South line	Feet from the	East/West line	County
J	18	16S	36E		1682	South	2287	East	Lea

<sup>9</sup> Proposed Pool 1 Lovington Upper Penn West	<sup>10</sup> Proposed Pool 2
---	-------------------------------

<sup>11</sup> Work Type Code N	<sup>12</sup> Well Type Code G	<sup>13</sup> Cable/Rotary R	<sup>14</sup> Lease Type Code P	<sup>15</sup> Ground Level Elevation 3960'
<sup>16</sup> Multiple N	<sup>17</sup> Proposed Depth 11,750'	<sup>18</sup> Formation Strawn	<sup>19</sup> Contractor Patterson	<sup>20</sup> Spud Date 01/15/04

<sup>21</sup> Proposed Casing and Cement Program

Hole Size	Casing Size	Casing weight/foot	Setting Depth	Sacks of Cement	Estimated TOC
17-1/2	13-3/8	48#	0-475'	Existing	Surface
12-1/4"	9-5/8	40#	0-4250'	Existing	Surface
7-7/8	5-1/2	17#	0-11,750'	±1100	4,100
					000
					sq904
					ED
					4002

<sup>22</sup> Describe the proposed program. If this application is to DEEPEN or PLUG BACK, give the data on the present productive zone and proposed new productive zone.

Describe the blowout prevention program, if any. Use additional sheets if necessary.

This well is a re-entry; the 13-3/8" & 9-5/8" have been cemented to surface; the 8-5/8" casing will be repaired, tested & wellhead will be installed.

COI proposes to drill to a total depth of 11,750 in the Strawn formation with Patterson as the drilling contractor.

BOP consists of 13-5/8" 5M# blind & pipe rams # 13-5/8" 5M# Annular (See Schematic)

<sup>23</sup> I hereby certify that the information given above is true and complete to the best of my knowledge and belief.

Signature:

*Barbara J. Bale*

Printed name: Barbara J. Bale

Title: Regulatory Analyst

E-mail Address: bbale@chkenenergy.com

Date: 01/09/04

Phone: (405)848-8000

OIL CONSERVATION DIVISION

Approved by:

*[Signature]*  
PETROLEUM ENGINEER

Title:

Approval Date: JAN 21 2004

Expiration Date:

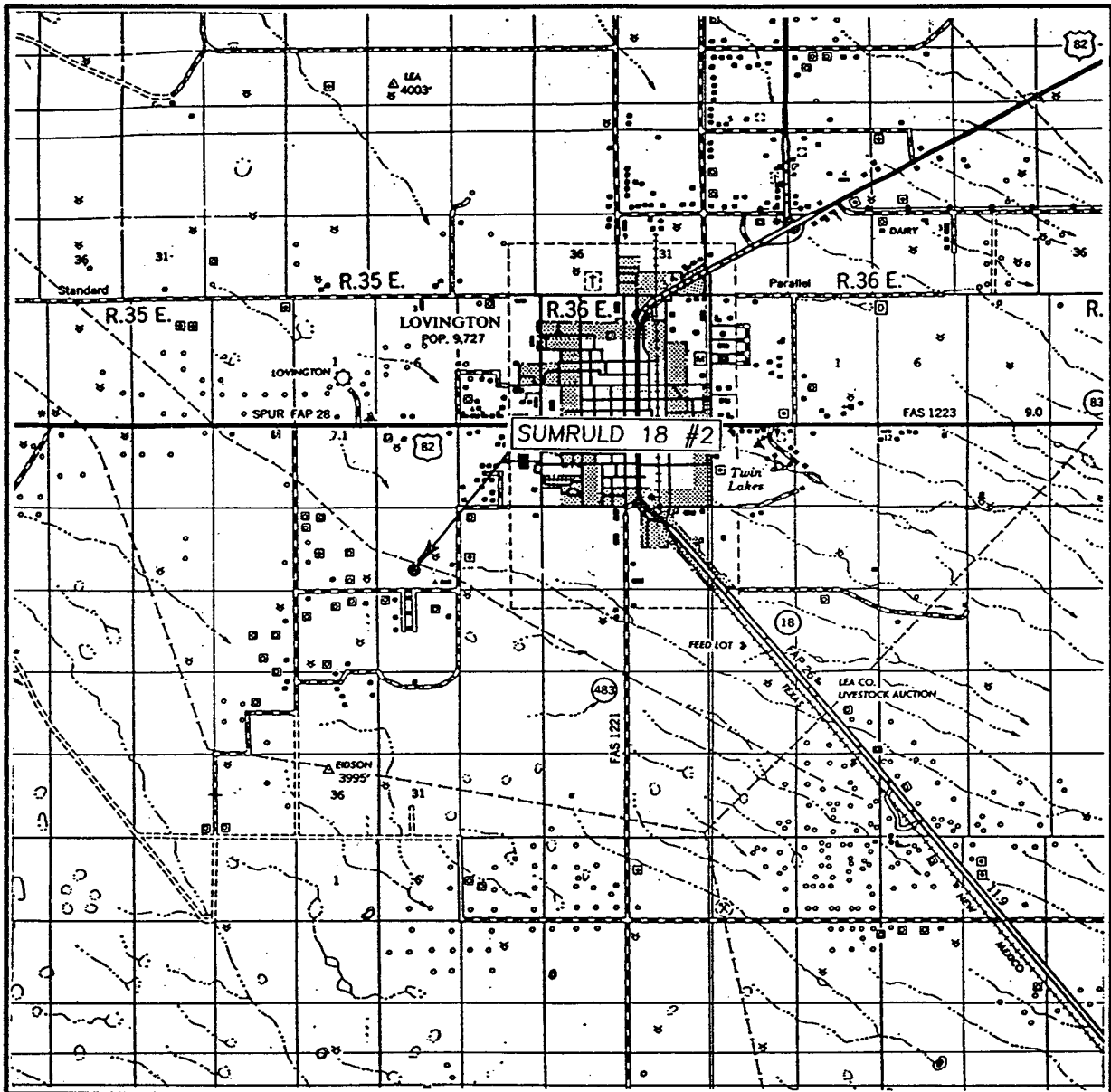
Conditions of Approval:

Attached ☐

Permit Expires 1 Year From Approval  
Date Unless Drilling Underway



# VICINITY MAP

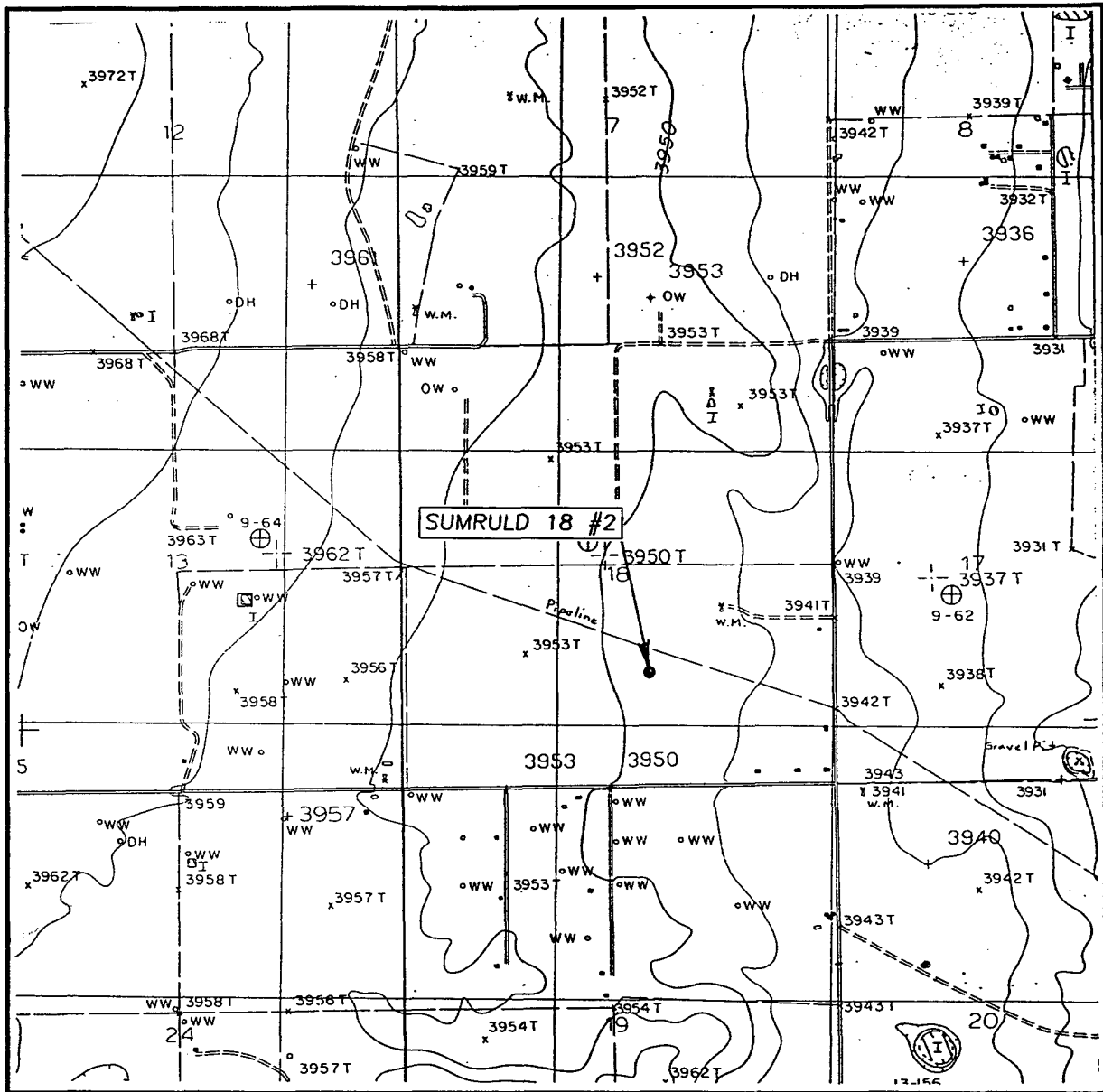


SCALE: 1" = 2 MILES

SEC. 18 TWP. 16-S RGE. 36-E  
 SURVEY N.M.P.M.  
 COUNTY LEA  
 DESCRIPTION 1364' FSL & 2202' FEL  
 ELEVATION 3948'  
 OPERATOR CHESAPEAKE OPERATING, INC.  
 LEASE SUMRULD 18

JOHN WEST SURVEYING  
 HOBBS, NEW MEXICO  
 (505) 393-3117

# LOCATION VERIFICATION MAP



SCALE: 1" = 2000'

CONTOUR INTERVAL: 5'  
LOVINGTON NW, N.M.

SEC. 18 TWP. 16-S RGE. 36-E

SURVEY N.M.P.M.

COUNTY LEA

DESCRIPTION 1364' FSL & 2202' FEL

ELEVATION 3948'

OPERATOR CHESAPEAKE OPERATING, INC.

LEASE SUMRULD 18

U.S.G.S. TOPOGRAPHIC MAP  
LOVINGTON NW, N.M.

**JOHN WEST SURVEYING**  
**HOBBS, NEW MEXICO**  
**(505) 393-3117**

BLOWOUT PREVENTOR SCHEMATIC  
CHESAPEAKE OPERATING INC

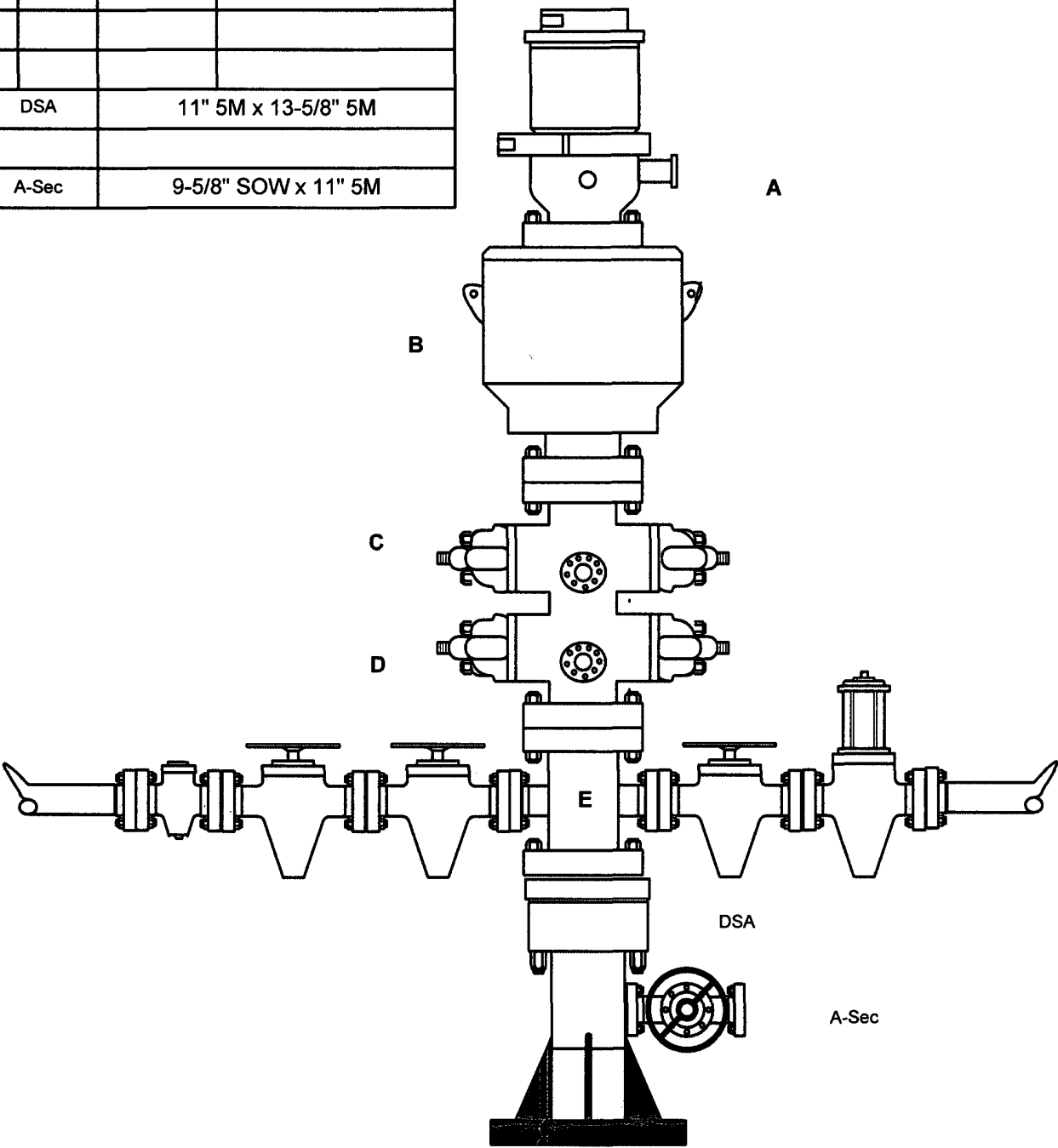
WELL : Sumruld 2-18 re-entry

RIG : Patterson 504

COUNTY : Lea STATE: New Mexico

OPERATION: Drill out below 9-5/8" Casing

	SIZE	PRESSURE	DESCRIPTION
A	13-5/8"	500#	Rot Head
B	13-5/8"	5,000#	Annular
C	13-5/8"	5,000#	Pipe Rams
D	13-5/8"	5,000#	Blind Rams
E	13-5/8"	5,000#	Mud Cross
DSA		11" 5M x 13-5/8" 5M	
A-Sec		9-5/8" SOW x 11" 5M	



Kill Line

SIZE	PRESSURE	DESCRIPTION
2"	10,000#	Check Valve
2"	10,000#	Gate Valve
2"	10,000#	Gate Valve

Choke Line

SIZE	PRESSURE	DESCRIPTION
4"	10,000#	Gate Valve
4"	10,000#	HCR Valve