

☐ AMENDED REPORT

**Permit Expires 1 Year From Approval
Date Unless Drilling Underway**

DISTRICT I

P.O. Box 1980, Hobbs, NM 88241-1980

State of New Mexico

Energy, Minerals and Natural Resources Department

Form C-102

Revised February 10, 1994

Submit to Appropriate District Office

State Lease - 4 Copies

Fee Lease - 3 Copies

DISTRICT II

P.O. Drawer DD, Artesia, NM 88211-0719

OIL CONSERVATION DIVISION

P.O. Box 2088

Santa Fe, New Mexico 87504-2088

DISTRICT III

1000 Rio Brazos Rd., Aztec, NM 87410

DISTRICT IV

P.O. Box 2088, Santa Fe, N.M. 87504-2088

WELL LOCATION AND ACREAGE DEDICATION PLAT

☐ AMENDED REPORT

API Number 30-D25-36539	Pool Code 97319	Pool Name Canyon Wildcat #1 Upper Penn
Property Code 33317	Property Name WDM 12	Well Number 1
OGRID No. 147179	Operator Name CHESAPEAKE OPERATING, INC.	Elevation 3967'

Surface Location

UL or lot No.	Section	Township	Range	Lot Idn	Feet from the	North/South line	Feet from the	East/West line	County
D	12	15-S	35-E		660	NORTH	990	WEST	LEA

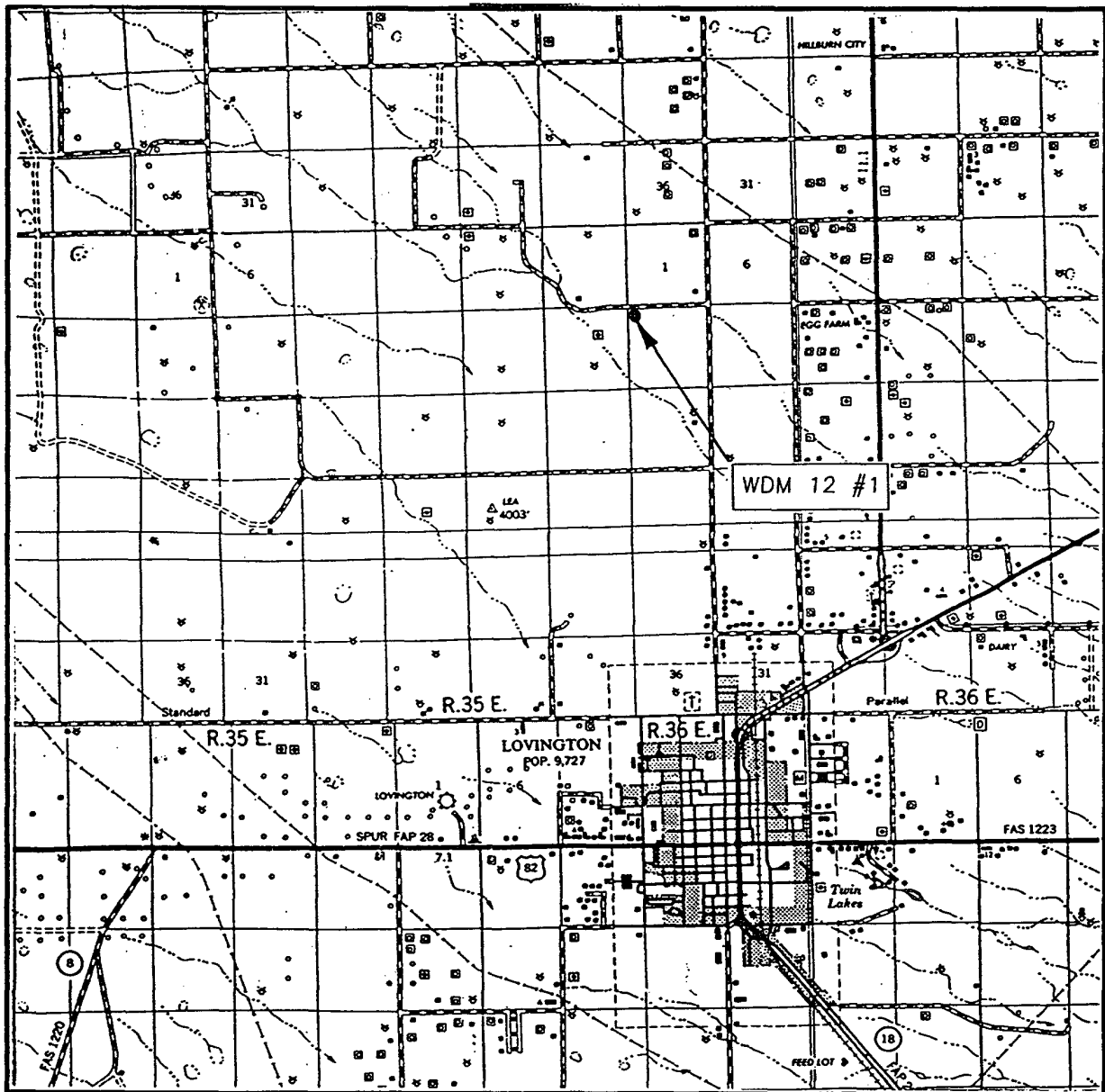
Bottom Hole Location If Different From Surface

UL or lot No.	Section	Township	Range	Lot Idn	Feet from the	North/South line	Feet from the	East/West line	County
Dedicated Acres 40	Joint or Infill	Consolidation Code	Order No.						

NO ALLOWABLE WILL BE ASSIGNED TO THIS COMPLETION UNTIL ALL INTERESTS HAVE BEEN CONSOLIDATED
OR A NON-STANDARD UNIT HAS BEEN APPROVED BY THE DIVISION

	GEODETIC COORDINATES NAD 27 NME Y = 742467.3 N X = 796546.5 E LAT. 33.03735° N LONG. 103.36568° W			OPERATOR CERTIFICATION I hereby certify the the information contained herein is true and complete to the best of my knowledge and belief. Signature Barbara J. Bale Printed Name Regulatory Analyst Date 01/15/04
	SURVEYOR CERTIFICATION I hereby certify that the well location shown on this plat was plotted from field notes of actual surveys made by me or under my supervision, and that the same is true and correct to the best of my belief. December 17, 2003 Date Surveyed Signature & Seal of Professional Surveyor 03.11.1373			
	Certificate No. GARY EIDSON 12641			

VICINITY MAP

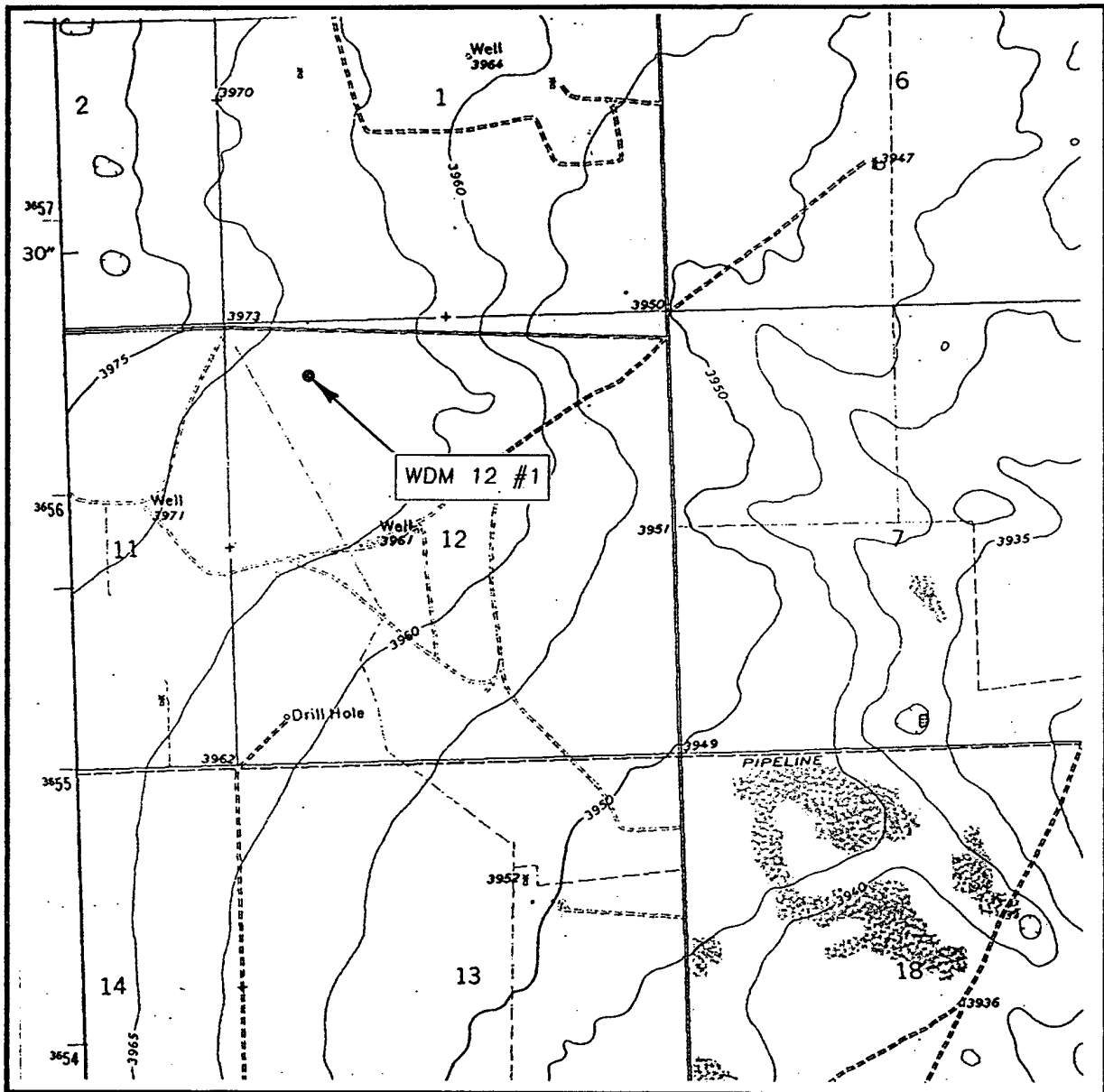


SCALE: 1" = 2 MILES

SEC. 12 TWP. 15-S RGE. 35-E
 SURVEY N.M.P.M.
 COUNTY LEA
 DESCRIPTION 660' FNL & 990' FWL
 ELEVATION 3967'
 OPERATOR CHESAPEAKE OPERATING, INC.
 LEASE WDM 12

JOHN WEST SURVEYING
 HOBBS, NEW MEXICO
 (505) 393-3117

LOCATION VERIFICATION MAP



SCALE: 1" = 2000'

CONTOUR INTERVAL: 5'
HILLBURN CITY, N.M.

SEC. 12 TWP. 15-S RGE. 35-E

SURVEY N.M.P.M.

COUNTY LEA

DESCRIPTION 660' FNL & 990' FWL

ELEVATION 3967'

OPERATOR CHESAPEAKE OPERATING, INC.

LEASE WDM 12

U.S.G.S. TOPOGRAPHIC MAP
HILLBURN CITY, N.M.

JOHN WEST SURVEYING
HOBBS, NEW MEXICO
(505) 393-3117

BLOWOUT PREVENTOR SCHEMATIC
CHESAPEAKE OPERATING INC

WELL : WDM 12-1

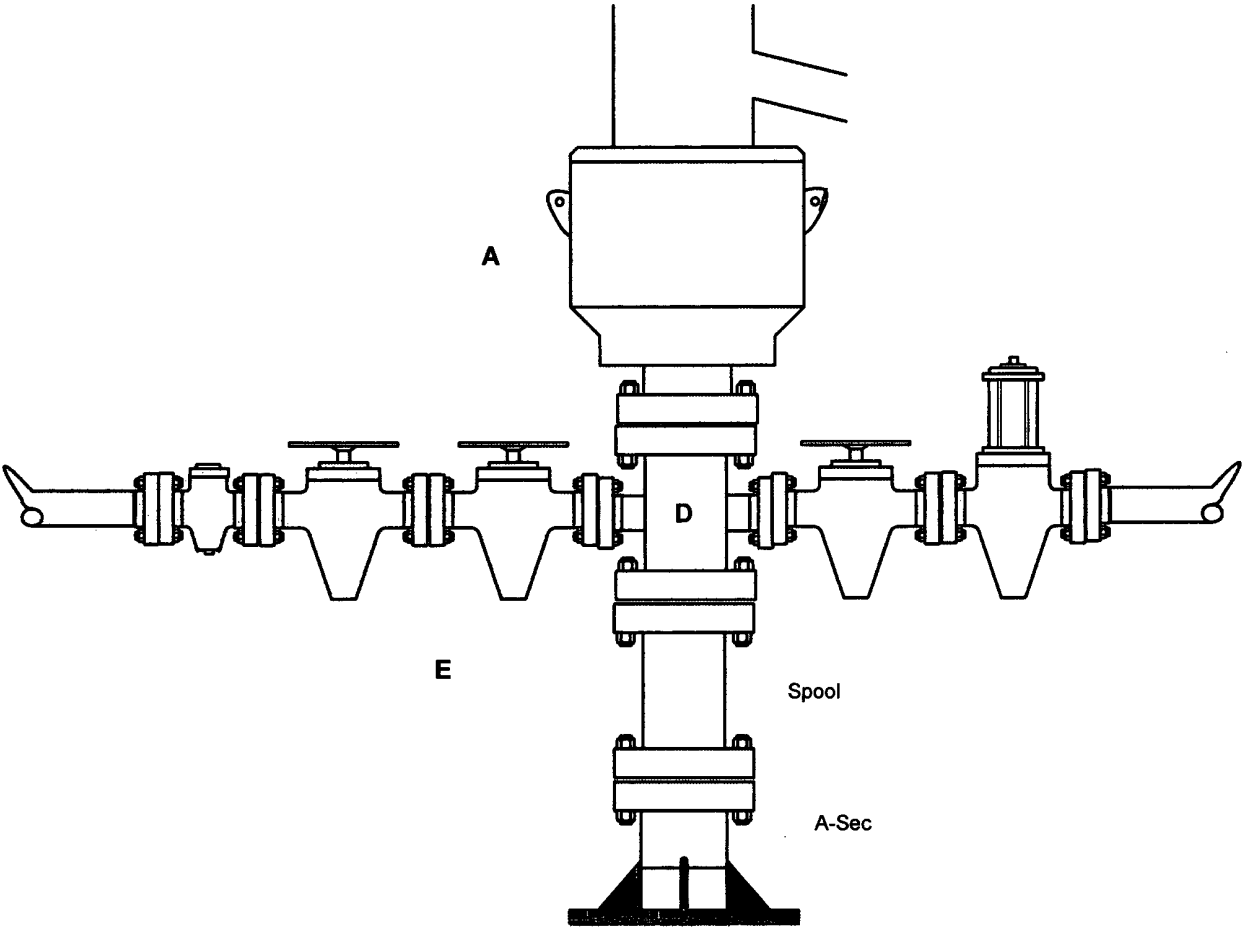
RIG : Patterson 504

COUNTY : Lea

STATE: New Mexico

OPERATION Drill out below 13-5/8" Casing

	SIZE	PRESSURE	DESCRIPTION
A	13-5/8"	5,000#	Annular
D	13-5/8"	5,000#	Mud Cross
Spool		13-5/8" 3M x 13-5/8" 5M	
A-Sec		13-5/8" SOW x 13-5/8" 3M	



Kill Line

SIZE	PRESSURE	DESCRIPTION
2"	10,000#	Check Valve
2"	10,000#	Gate Valve
2"	10,000#	Gate Valve

Choke Line

SIZE	PRESSURE	DESCRIPTION
4"	10,000#	Gate Valve
4"	10,000#	HCR Valve

BLOWOUT PREVENTOR SCHEMATIC
CHESAPEAKE OPERATING INC

WELL : WDM 12-1

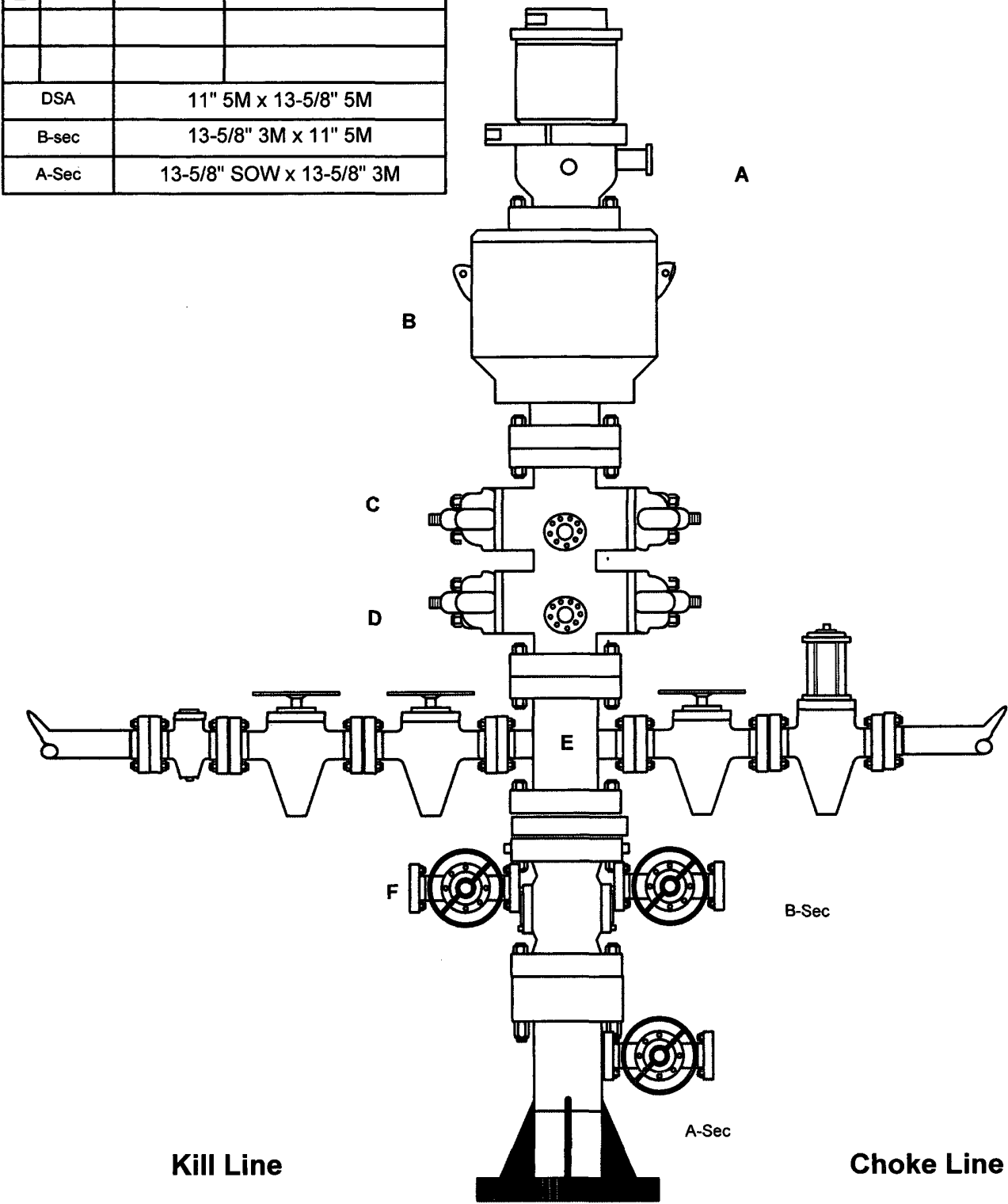
RIG : Patterson 504

COUNTY : Lea

STATE: New Mexico

OPERATION: Drill out below 8-5/8" Casing

	SIZE	PRESSURE	DESCRIPTION
A	13-5/8"	500#	Rot Head
B	13-5/8"	5,000#	Annular
C	13-5/8"	5,000#	Pipe Rams
D	13-5/8"	5,000#	Blind Rams
E	13-5/8"	5,000#	Mud Cross
DSA		11" 5M x 13-5/8" 5M	
B-sec		13-5/8" 3M x 11" 5M	
A-Sec		13-5/8" SOW x 13-5/8" 3M	



Kill Line

Choke Line

SIZE	PRESSURE	DESCRIPTION
2"	10,000#	Check Valve
2"	10,000#	Gate Valve
2"	10,000#	Gate Valve

SIZE	PRESSURE	DESCRIPTION
4"	10,000#	Gate Valve
4"	10,000#	HCR Valve