

District I  
1625 N. French Dr., Hobbs, NM 88240  
District II  
1301 W. Grand Avenue, Artesia, NM 88210  
District III  
1000 Rio Brazos Road, Aztec, NM 87410  
District IV  
1220 S. Francis Dr., Santa Fe, NM 87505

State of New Mexico  
Energy Minerals and Natural Resources

Oil Conservation Division  
1220 S. St. Francis Dr.  
Santa Fe, NM 87505

Form C-101  
Revised March 17, 1999

Submit to appropriate District Office  
State Lease - 6 Copies  
Fee Lease - 5 Copies

☐ AMENDED REPORT

**APPLICATION FOR PERMIT TO DRILL, RE-ENTER, DEEPEN, PLUGBACK, OR ADD A ZONE**

<sup>1</sup> Operator Name and Address CAPATAZ OPERATING, INC., PO BOX 10549, MIDLAND, TX 79702		<sup>2</sup> OGRID Number 3659
		<sup>3</sup> API Number 30 - 025-28287
<sup>4</sup> Property Code - 32978	<sup>5</sup> Property Name L & M	<sup>6</sup> Well No. 1

<sup>7</sup> Surface Location

UL or lot no. NM	Section 2	Township 20S	Range 38E	Lot Idn	Feet from the 660'	North/South line SOUTH	Feet from the 1320'	East/West line WEST	County LEA
---------------------	--------------	-----------------	--------------	---------	-----------------------	---------------------------	------------------------	------------------------	---------------

<sup>8</sup> Proposed Bottom Hole Location If Different From Surface

UL or lot no. L	Section 2	Township 20S	Range 38E	Lot Idn	Feet from the 1509'	North/South line SOUTH	Feet from the 895'	East/West line WEST	County LEA
--------------------	--------------	-----------------	--------------	---------	------------------------	---------------------------	-----------------------	------------------------	---------------

<sup>9</sup> Proposed Pool 1 HOUSE, DRINKARD	<sup>10</sup> Proposed Pool 2 HOUSE, TUBB
---	--

<sup>11</sup> Work Type Code E	<sup>12</sup> Well Type Code M	<sup>13</sup> Cable/Rotary ROTARY	<sup>14</sup> Lease Type Code S	<sup>15</sup> Ground Level Elevation 3580
<sup>16</sup> Multiple Y	<sup>17</sup> Proposed Depth 7400'	<sup>18</sup> Formation DRINKARD	<sup>19</sup> Contractor ROD RIC	<sup>20</sup> Spud Date 11/04/03

<sup>21</sup> Proposed Casing and Cement Program

Hole Size	Casing Size	Casing weight/foot	Setting Depth	Sacks of Cement	Estimated TOC
17-1/2	13-3/8*	61#	448'	350	SURFACE
12-1/4	9-5/8*	40#	3825'	1500	SURFACE
7-7/8	5-1/2	17#	7400'	750	3500'

<sup>22</sup> Describe the proposed program. If this application is to DEEPEN or PLUG BACK, give the data on the present productive zone and proposed new productive zone.  
Describe the blowout prevention program, if any. Use additional sheets if necessary.

LOCATE AND EXCAVATE SURFACE CASING. REMOVE MARKER, CUT OFF CAP & WELD ON CASING HEAD. RU DRILLING RIG. INSTALL BOP. DRILL OUT CEMENT PLUGS TO 3700'. TEST CASING TO 500#. DRILL OUT ALL PLUGS TO 7400'. CIRCULATE HOLE CLEAN. RUN OPEN HOLE LOGS. RUN AND CEMENT 5-1/2" 17# CASING W/ 750 SX. RDMO DRILLING RIG. MIRU COMPLETION RIG AND PERF AND STIMULATE AS INDICATED BY OPEN HOLE LOGS.  
\*\*\*\*\*EXISTING CASING STRINGS RUN AND CEMENTED BY EXXON.\*\*\*\*\*

<sup>23</sup> I hereby certify that the information given above is true and complete to the best of my knowledge and belief.

Signature:

Printed name: H SCOTT DAVIS

Title: AGENT

Date: 09/23/03

Phone: 432-620-8820

OIL CONSERVATION DIVISION

Approved by:

Title:

Approval Date:

Expiration Date:

Conditions of Approval: 1 2004  
Attached ☐

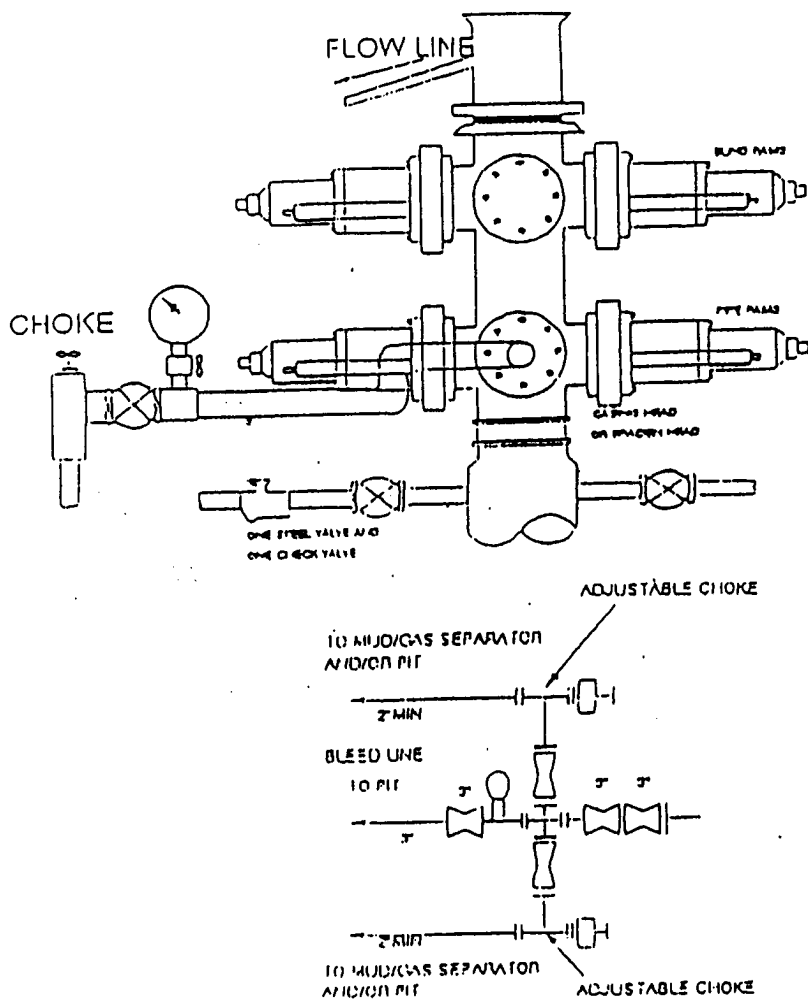
Permit Expires 1 Year From Approval  
Date Unless Drilling Underway  
Re-Entry

## BLOWOUT PREVENTER

3000 PSI WP

### THE FOLLOWING CONSTITUTE MINIMUM BLOWOUT PREVENTER REQUIREMENTS

- A. One double gate blowout preventer with lower rams for pipe and upper rams blind, all hydraulically controlled.
- B. Opening on preventers between rams to be flanged, studded or clamped and at least two inches in diameter.
- C. All connections from operating manifold to preventers to be all steel hose or tube a minimum of one inch in diameter.
- D. The available closing pressure shall be at least 15% in excess of that required with sufficient volume to operate (close, open and re-close) the preventers.
- E. All connections to and from preventers to have a pressure rating equivalent to that of the BOP's.
- F. Manual controls to be installed before drilling cement plug.
- G. Valve to control flow through drill pipe to be located on rig floor.
- H. All chokes will be adjustable. Choke spool may be used between rams.



## District I

1625 N. French Dr., Hobbs, NM 88240

## District II

1301 W. Grand Avenue, Artesia, NM 88210

## District III

1000 Rio Brazos Rd., Aztec, NM 87410

## District IV

1220 S. St. Francis Dr., Santa Fe, NM 87505

## State of New Mexico

Energy, Minerals &amp; Natural Resources Department

## OIL CONSERVATION DIVISION

1220 South St. Francis Dr.

Santa Fe, NM 87505

Form C-102

Revised August 15, 2000

Submit to Appropriate District Office

State Lease - 4 Copies

Fee Lease - 3 Copies

☐ AMENDED REPORT

## WELL LOCATION AND ACREAGE DEDICATION PLAT

<sup>1</sup> API Number 30-025-28287	<sup>1</sup> Pool Code 78760	<sup>1</sup> Pool Name House, Tubb
<sup>1</sup> Property Code 32978	<sup>1</sup> Property Name L & M	<sup>1</sup> Well Number 1
<sup>1</sup> OGRID No. 3659	<sup>1</sup> Operator Name Capataz Operating, Inc.	<sup>1</sup> Elevation 3850

<sup>10</sup> Surface Location

UL or lot no.	Section	Township	Range	Lot Idn	Feet from the	North/South line	Feet from the	East/West line	County
MN	2	20S	38E		660	South	1320	West	Lea

<sup>11</sup> Bottom Hole Location If Different From Surface

UL or lot no.	Section	Township	Range	Lot Idn	Feet from the	North/South line	Feet from the	East/West line	County
	2	20S	38E		1340.29	South	979.86	West	Lea

<sup>12</sup> Dedicated Acres 4280	<sup>13</sup> Joint or Infill	<sup>14</sup> Consolidation Code	<sup>15</sup> Order No. NSL-4952 (BHL)
---------------------------------------	-------------------------------	----------------------------------	---

NO ALLOWABLE WILL BE ASSIGNED TO THIS COMPLETION UNTIL ALL INTERESTS HAVE BEEN CONSOLIDATED OR A NON-STANDARD UNIT HAS BEEN APPROVED BY THE DIVISION

<div data-bbox="102 928 1084 1904"> </div>	<div data-bbox="1084 928 1586 1417"> <p><sup>17</sup> OPERATOR CERTIFICATION</p> <p>I hereby certify that the information contained herein is true and complete to the best of my knowledge and belief.</p> <p>Signature: <i>[Signature]</i></p> <p>Printed Name: H Scott Davis</p> <p>Title: Agent</p> <p>Date: 9/23/03</p> </div>
	<div data-bbox="1084 1417 1586 1904"> <p><sup>18</sup> SURVEYOR CERTIFICATION</p> <p>I hereby certify that the well location shown on this plat was plotted from field notes of actual surveys made by me or under my supervision, and that the same is true and correct to the best of my belief.</p> <p>See attached Original Exxon Survey.</p> <p>Date of Survey:</p> <p>Signature and Seal of Professional Surveyor:</p> <p>Certificate Number:</p> </div>

## District I

1625 N. French Dr., Hobbs, NM 88240

## District II

1301 W. Grand Avenue, Artesia, NM 88210

## District III

1000 Rio Brazos Rd., Aztec, NM 87410

## District IV

1220 S. St. Francis Dr., Santa Fe, NM 87505

## State of New Mexico

Energy, Minerals &amp; Natural Resources Department

## OIL CONSERVATION DIVISION

1220 South St. Francis Dr.

Santa Fe, NM 87505

Form C-102

Revised August 15, 2000

Submit to Appropriate District Office

State Lease - 4 Copies

Fee Lease - 3 Copies

☐ AMENDED REPORT

## WELL LOCATION AND ACREAGE DEDICATION PLAT

<sup>1</sup> API Number 30-025-28287	<sup>2</sup> Pool Code 33250	<sup>3</sup> Pool Name House, Irinkard
<sup>4</sup> Property Code 32978	<sup>5</sup> Property Name L & M	<sup>6</sup> Well Number 1
<sup>7</sup> OGRID No. 3659	<sup>8</sup> Operator Name Capataz Operating, Inc	<sup>9</sup> Elevation 3580

<sup>10</sup> Surface Location

UL or lot no.	Section	Township	Range	Lot Idn	Feet from the	North/South line	Feet from the	East/West line	County
M/N	2	20S	38E		660	South	1320	West	Lea

<sup>11</sup> Bottom Hole Location If Different From Surface

UL or lot no.	Section	Township	Range	Lot Idn	Feet from the	North/South line	Feet from the	East/West line	County
L	2	20S	38E		1444.69	South	927.66	West	Lea

<sup>12</sup> Dedicated Acres 40.80	<sup>13</sup> Joint or Infill	<sup>14</sup> Consolidation Code	<sup>15</sup> Order No. NSL-4952 (BHL)
--	-------------------------------	----------------------------------	---

NO ALLOWABLE WILL BE ASSIGNED TO THIS COMPLETION UNTIL ALL INTERESTS HAVE BEEN CONSOLIDATED OR A NON-STANDARD UNIT HAS BEEN APPROVED BY THE DIVISION

	<sup>16</sup>	<sup>17</sup> OPERATOR CERTIFICATION I hereby certify that the information contained herein is true and complete to the best of my knowledge and belief.  Signature H Scott Davis Printed Name Agent Title 9/23/03 Date
	<sup>18</sup> SURVEYOR CERTIFICATION I hereby certify that the well location shown on this plat was plotted from field notes of actual surveys made by me or under my supervision, and that the same is true and correct to the best of my belief. See Attached Original Exxon Survey. Date of Survey Signature and Seal of Professional Surveyor:	Certificate Number

Exxon Lse. No. \_\_\_\_\_ N MEXICO OIL CONSERVATION COMMISS'Y  
State Lse. No. \_\_\_\_\_ WELL LOCATION AND ACREAGE DEDICATION LAT

Form C-102  
Supersedes C-128  
Effective 1-4-65

Federal Lse. No. \_\_\_\_\_ All distances must be from the outer boundaries of the Section.

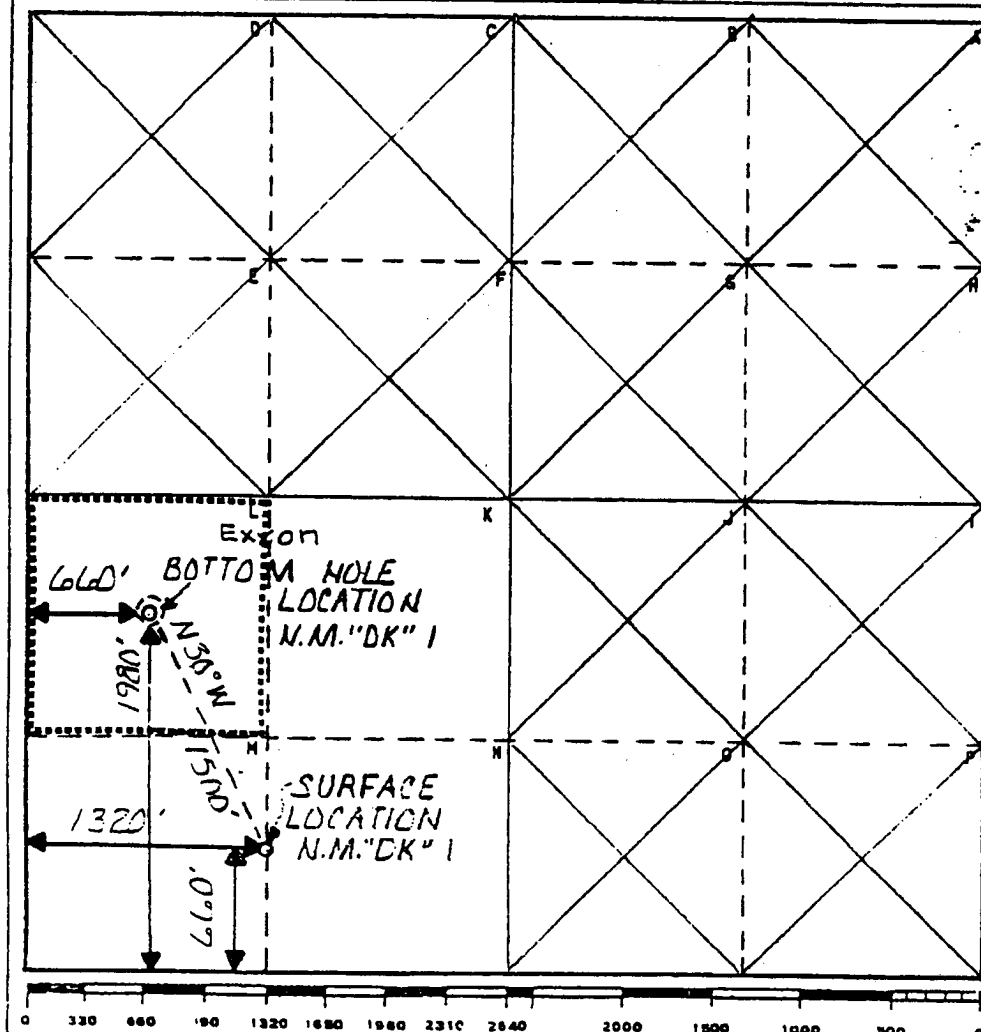
Operator Exxon Corporation		Lease NEW MEXICO "DK" STATE			Well No. 1
Unit Letter SUR - M/N B.H. - 1	Section 2	Township 20S	Range 38E	County LEA	
Actual Footage Location of Well: SUR - 660 B.H. = 1980 feet from the SOUTH line and SUR - 1320 BH 660 feet from the WEST line					
Ground Level Elev. SUR. 3380'		Producing Formation McKEE SAND		Pool WILDCAT	Dedicated Acreage 40 Acres

- Outline the acreage dedicated to the subject well by colored pencil or hachure marks on the plat below.
- If more than one lease is dedicated to the well, outline each and identify the ownership thereof (both as to working interest and royalty).
- If more than one lease of different ownership is dedicated to the well, have the interests of all owners been consolidated by communitization, unitization, force-pooling, etc?

☐ Yes ☐ No If answer is "yes," type of consolidation \_\_\_\_\_

If answer is "no," list the owners and tract descriptions which have actually been consolidated. (Use reverse side of this form if necessary.) \_\_\_\_\_

No allowable will be assigned to the well until all interests have been consolidated (by communitization, unitization, forced-pooling, or otherwise) or until a non-standard unit, eliminating such interests, has been approved by the Commission.



#### CERTIFICATION

I hereby certify that the information contained herein is true and complete to the best of my knowledge and belief.

Name  
*Melba Kripling*  
Position  
UNIT HEAD

Company Exxon Corporation  
Box 1600 Midland, Texas

Date  
7-7-63

I hereby certify that the well location shown on this plat was plotted from field notes of actual surveys made by me or under my supervision, and that the same is true and correct to the best of my knowledge and belief.

6-14-63

Date Surveyed

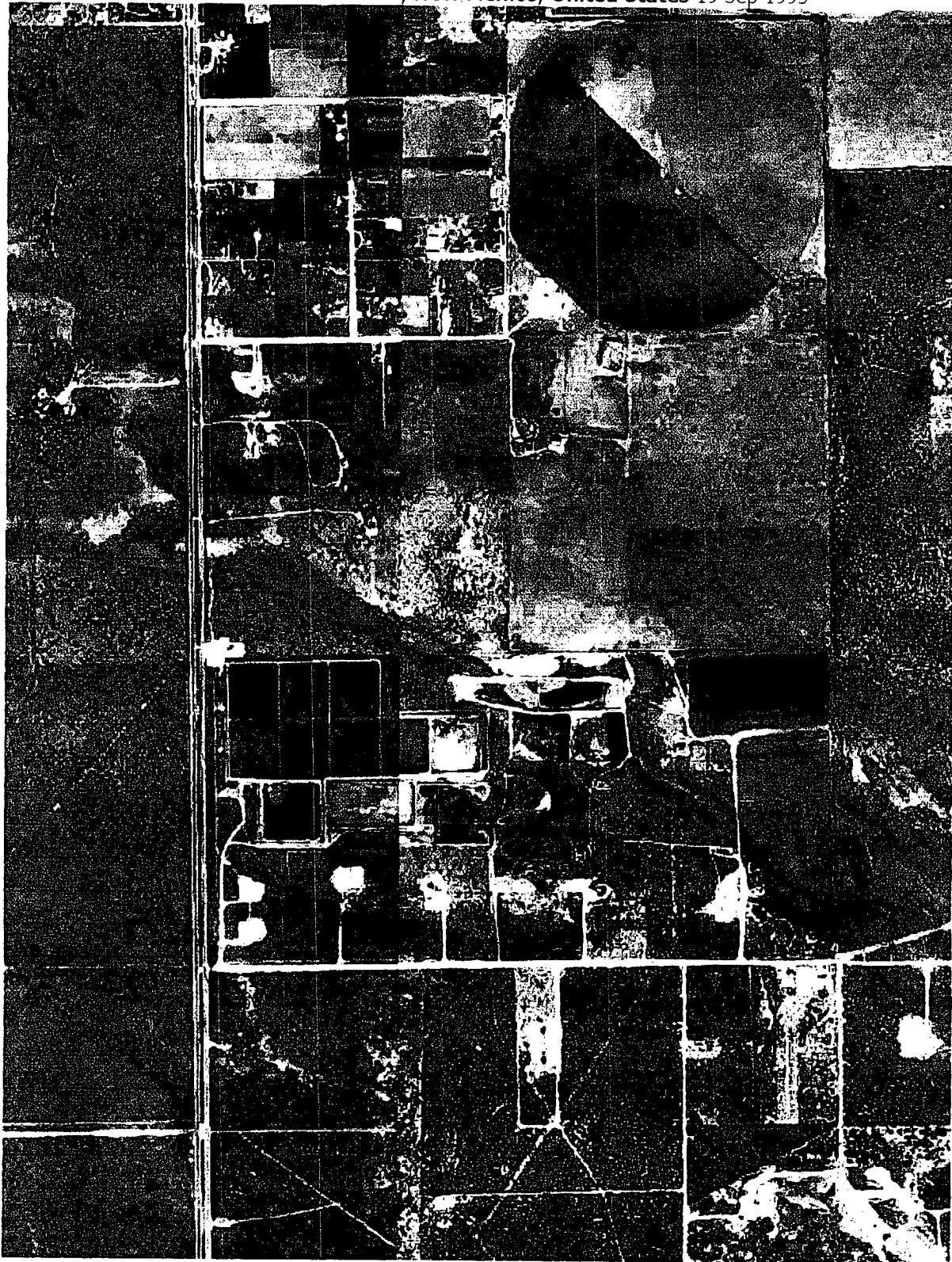
Registered Professional Engineer  
and/or Land Surveyor

*W. J. Culman*

Certificate No.  
6157

1/4 Miles SE 1/4 of HOBBS, New Mexico

C.E. Sec. File No. W-A-2152

[Send To Printer](#)[Back To TerraServer](#)[Change to 11x17 Print Size](#)[Show Grid Lines](#)[Change to Landscape](#)**USGS 11 km S of Hobbs, New Mexico, United States 19 Sep 1995**

0 0.5Km

0 0.25Mi

Image courtesy of the U.S. Geological Survey

© 2003 Microsoft Corporation. All rights reserved. **Terms of Use**