

District I
1625 N. French Dr., Hobbs, NM 88240
District II
1301 W. Grand Avenue, Artesia, NM 88210
District III
1000 Rio Brazos Road, Aztec, NM 87410
District IV
1220 S. St. Francis Dr., Santa Fe, NM 87505

RECEIVED

State of New Mexico
Energy, Minerals and Natural Resources
DEC 22 2009
Oil Conservation Division
HOBBSOCD 1220 South St. Francis Dr.
Santa Fe, NM 87505

Form C-101
June 16, 2008

Submit to appropriate District Office

☐ AMENDED REPORT

APPLICATION FOR PERMIT TO DRILL, RE-ENTER, DEEPEN, PLUGBACK, OR ADD A ZONE

¹ Operator Name and Address Harvard Petroleum Company, LLC, PO Box 936, Roswell, NM 88202-0936		² OGRID Number 010155
³ Property Code 97950	⁴ Property Name Ramsland	⁵ API Number 30 - 025-39622
⁶ Proposed Pool 1 Garrett, Drinkard, East		⁷ Proposed Pool 2 Well No. 1

7 Surface Location

UL or lot no.	Section	Township	Range	Lot Idn	Feet from the	North/South line	Feet from the	East/West line	County
A	27	16-S	38-E		330	North	500	East	Lea

8 Proposed Bottom Hole Location If Different From Surface

UL or lot no.	Section	Township	Range	Lot Idn	Feet from the	North/South line	Feet from the	East/West line	County
G	27	16-S	38-E		1650	North	2310	East	Lea

Additional Well Information

¹¹ Work Type Code N	¹² Well Type Code O	¹³ Cable/Rotary R	¹⁴ Lease Type Code P	¹⁵ Ground Level Elevation 3705
¹⁶ Multiple No	¹⁷ Proposed Depth TVD 8500, TD 10540	¹⁸ Formation Drinkard	¹⁹ Contractor Norton Energy	²⁰ Spud Date January 10, 2010

21 Proposed Casing and Cement Program

Hole Size	Casing Size	Casing weight/foot	Setting Depth	Sacks of Cement	Estimated TOC
12.25	9.625	36	2200	950	Circulate
8.75	7.00	26	8500	1250	Circulate
6.125	4.5	11.5	8000 - 10,540	NA	NA

²² Describe the proposed program. If this application is to DEEPEN or PLUG BACK, give the data on the present productive zone and proposed new productive zone. Describe the blowout prevention program, if any. Use additional sheets if necessary.

Harvard Petroleum Company, LLC proposes to drill and produce the Drinkard Formation as follows:

Drill a 12 1/4" hole to 2200' with fresh water then run 9 5/8" casing to TD. 9 5/8" casing will be cemented with adequate volume to circulate to surface. NU BOP and test then drill an 8.75" hole with brine and salt gel to TD (8500') and run open hole logs. After logging, 7" 26# casing will be run to TD and cemented with adequate volumes to circulate to surface.

A whipstock will be set and a window cut at approximately 8000' and a 6 1/8" horizontal hole approximately 2300' in length will be drilled.

A 4 1/2" liner equipped with packers will be set through the horizontal section but not cemented. The Drinkard formation will be tested through this liner.

H2S Equipment will be installed before drilling the San Andres formation.

See BOP Diagram.

²³ I hereby certify that the information given above is true and complete to the best of my knowledge and belief.

Signature:



Printed name: Phelps White

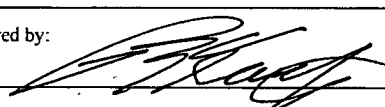
Title: Consultant

E-mail Address: pwiv@zianet.com

Date: December 22, 2009 Phone: 575 626 7660

OIL CONSERVATION DIVISION

Approved by:



Title: PETROLEUM ENGINEER

Approval Date: DEC 30 2009

Expiration Date:

Conditions of Approval Attached ☐

**Permit Expires 2 Years From Approval
Date Unless Drilling Underway**

RECEIVED

State of New Mexico

DISTRICT I
1625 N. FRENCH DR., BOBBS, NM 88240

DEC 22 2009

Energy, Minerals and Natural Resources Department

Form C-102

DISTRICT II
1301 W. GRAND AVENUE, ARTESIA, NM 88210

HOBBSD

OIL CONSERVATION DIVISION

Revised October 12, 2005

Submit to Appropriate District Office

State Lease - 4 Copies

Fee Lease - 3 Copies

DISTRICT III
1000 Rio Brazos Rd., Aztec, NM 87410

1220 SOUTH ST. FRANCIS DR.
Santa Fe, New Mexico 87505

DISTRICT IV
1220 S. ST. FRANCIS DR., SANTA FE, NM 87505

WELL LOCATION AND ACREAGE DEDICATION PLAT

☐ AMENDED REPORT

API Number 30-025-39622	Pool Code 22135	Pool Name Garrett Drinkard East
Property Code 37950	Property Name RAMSLAND	Well Number 1
OGRID No. 10155	Operator Name HARVARD PETROLEUM CORPORATION	Elevation '3705'

Surface Location

UL or lot No.	Section	Township	Range	Lot Idn	Feet from the	North/South line	Feet from the	East/West line	County
A	27	16-S	38-E		330	NORTH	500	EAST	LEA

Bottom Hole Location If Different From Surface

UL or lot No.	Section	Township	Range	Lot Idn	Feet from the	North/South line	Feet from the	East/West line	County
G	27	16-S	38-E		1650	NORTH	2310	EAST	LEA

Dedicated Acres	Joint or Infill	Consolidation Code	Order No.
160			

NO ALLOWABLE WILL BE ASSIGNED TO THIS COMPLETION UNTIL ALL INTERESTS HAVE BEEN CONSOLIDATED
OR A NON-STANDARD UNIT HAS BEEN APPROVED BY THE DIVISION

<p>DETAIL</p> <p>3706.6' 3705.2'</p> <p>3704.6' 3703.5'</p> <p>300'</p> <p>300'</p> <p>1650'</p> <p>2310'</p> <p>S.L.</p> <p>B.H.</p> <p>GRID: AZ - 233°29'10"</p> <p>HORZ. DIST. - 2238.5'</p> <p>SEE DETAIL</p> <p>500'</p> <p>330'</p> <p>GEODETIC COORDINATES NAD 27 NME SURFACE LOCATION Y=692831.4 N X=870106.8 E</p> <p>LAT.=32.898857° N LONG.=103.127545° W</p> <p>BOTTOM HOLE LOCATION Y=691499.5 N X=868307.8 E</p>	<p>OPERATOR CERTIFICATION</p> <p>I hereby certify that the information herein is true and complete to the best of my knowledge and belief, and that this organization either owns a working interest or unleased mineral interest in the land including the proposed bottom hole location or has a right to drill this well at this location pursuant to a contract with an owner of such mineral or working interest, or to a voluntary pooling agreement or a compulsory pooling order heretofore entered by the division.</p> <p><i>[Signature]</i> 12/22/09 Signature Date</p> <p>JEFF HARVARD Printed Name</p> <p>SURVEYOR CERTIFICATION</p> <p>I hereby certify that the well location shown on this plat was plotted from field notes of actual surveys made by me or under my supervision, and that the same is true and correct to the best of my belief.</p> <p><i>[Signature]</i> 11-19-09 Signature & Seal Date</p> <p>RONALD J. EIDSON Professional Surveyor</p> <p>Certificate No. GARY EIDSON 12641 RONALD EIDSON 3239</p>
--	---

**BOP DIAGRAM
3000S SYSTEM**

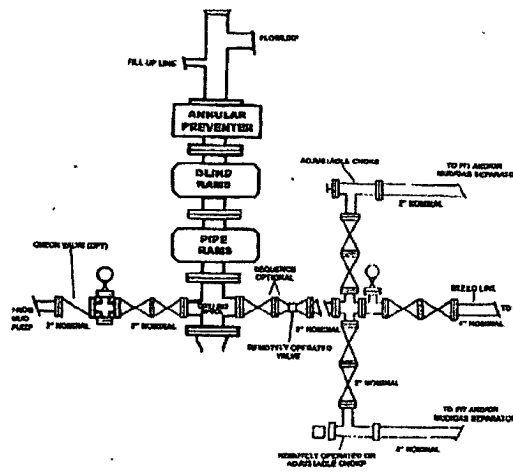
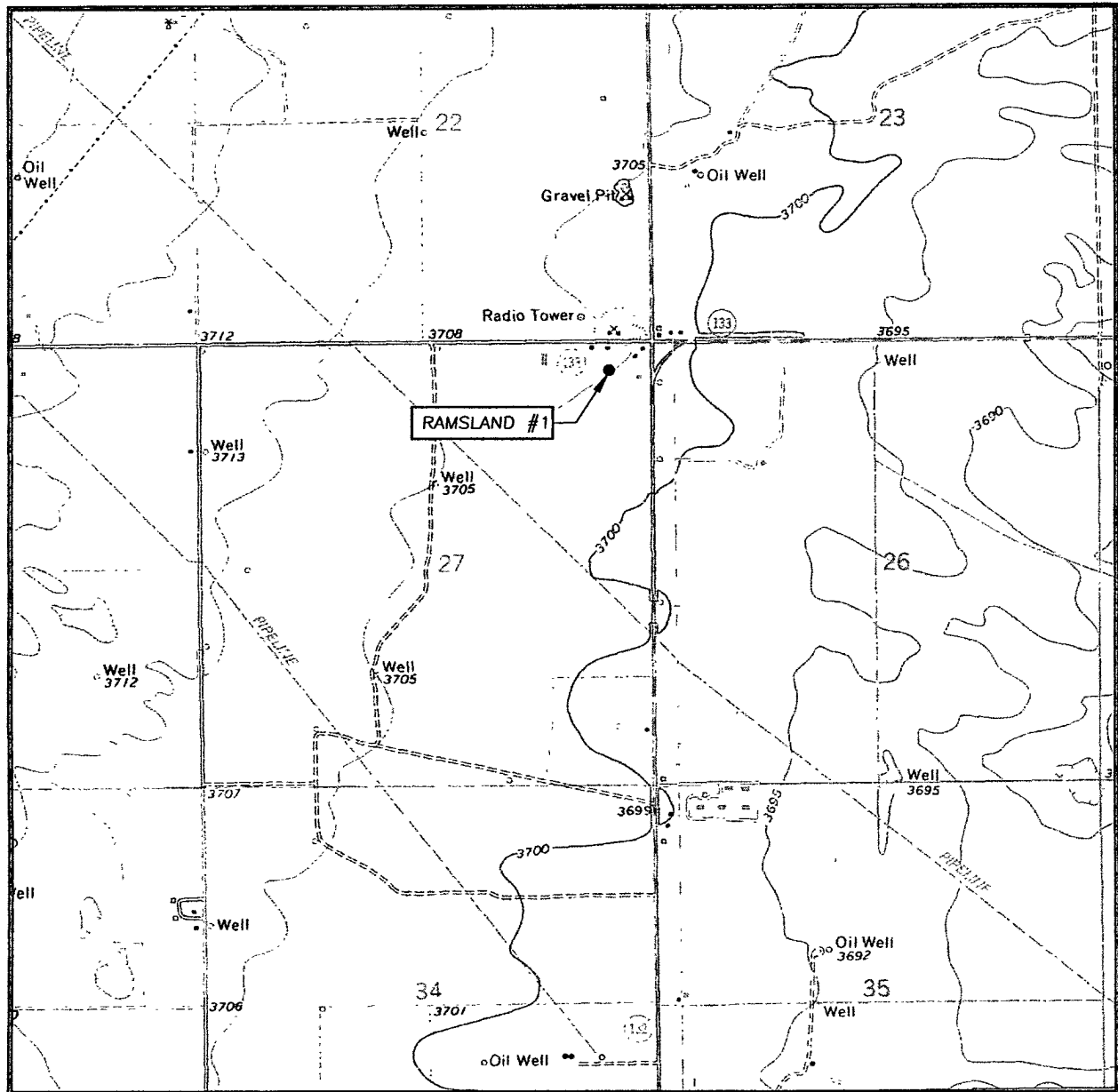


Exhibit "A"
Harvard Petroleum Company LLC
Ramsland #1
BOP Specifications

LOCATION VERIFICATION MAP



SCALE: 1" = 2000'

CONTOUR INTERVAL:
HUMBLE CITY NE, N.M. - 5'
HUMBLE CITY NW, N.M. - 5'

SEC. 27 TWP. 16-S RGE. 38-E

SURVEY _____ N.M.P.M.

COUNTY LEA STATE NEW MEXICO

DESCRIPTION 300' FNL & 500' FEL

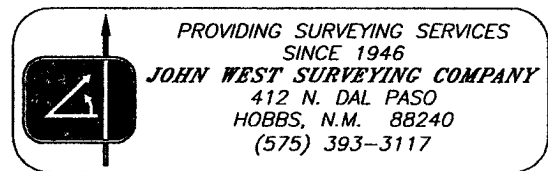
ELEVATION 3705'

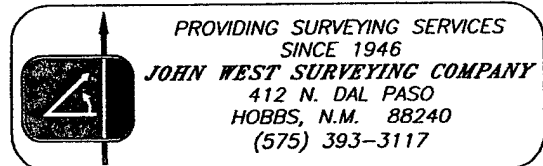
HARVARD
OPERATOR PETROLEUM CORPORATION

LEASE RAMSLAND

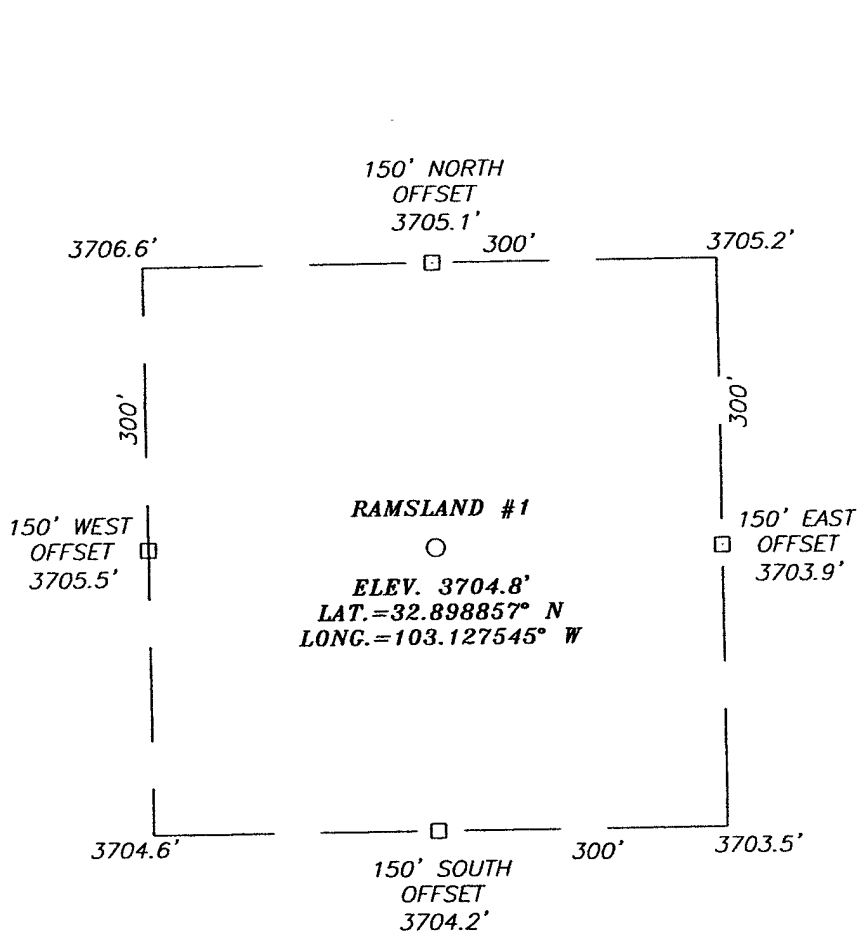
U.S.G.S. TOPOGRAPHIC MAP

HUMBLE CITY NW, N.M.



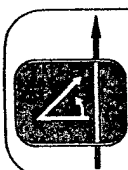
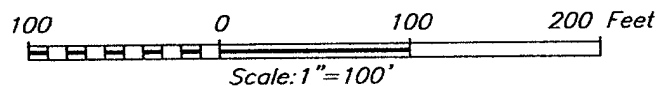


SECTION 27, TOWNSHIP 16 SOUTH, RANGE 38 EAST, N.M.P.M.,
 LEA COUNTY, NEW MEXICO



DIRECTIONS TO LOCATION

FROM THE INTERSECTION OF ST. HWY. #133
 (THORNHILL RD.) AND ST. HWY. #132 (DENVER
 CITY HWY.), THIS LOCATION IS 330 FEET SOUTH
 AND 550 FEET WEST.



PROVIDING SURVEYING SERVICES
 SINCE 1946
JOHN WEST SURVEYING COMPANY
 412 N. DAL PASO
 HOBBS, N.M. 88240
 (575) 393-3117

HARVARD PETROLEUM CORPORATION

RAMSLAND #1 WELL
 LOCATED 330 FEET FROM THE NORTH LINE
 AND 500 FEET FROM THE EAST LINE OF SECTION 27,
 TOWNSHIP 16 SOUTH, RANGE 38 EAST, N.M.P.M.,
 LEA COUNTY, NEW MEXICO.

Survey Date: 10/22/09	Sheet 1 of 1 Sheets
W.O. Number: 09.11.0947	Dr By: LA
Date: 10/27/09	09110947
	Rev 1: N/A
	Scale: 1"=100'