



Project: Lea County  
Site: Diamond "8" Fed Com  
Well: #1H  
Wellbore: OH  
Plan: Plan #2 (#1H/OH)



Azimuths to Grid North  
True North: -0.45°  
Magnetic North: 7.26°

Magnetic Field  
Strength: 48756.7snT  
Dip Angle: 60.18°  
Date: 12/31/2009  
Model: IGRF200510

# PATHFINDER

## WELL DETAILS: #1H

Ground Elevation: 3364.00  
RKB Elevation: WELL @ 3379.00ft (Original Well Elev)  
Rig Name: Original Well Elev

+N/-S	+E/-W	Northing	Easting	Latitude	Longitude	Slot
0.00	0.00	419437.700	760867.800	32° 9' 1.238 N	103° 29' 25.602 W	

PROJECT DETAILS: Lea County  
Geodetic System: US State Plane 1927 (Exact solution)  
Datum: NAD 1927 (NADCON CONUS)  
Ellipsoid: Clarke 1866  
Zone: New Mexico East 3001  
System Datum: Mean Sea Level  
Local North: Grid

## SECTION DETAILS

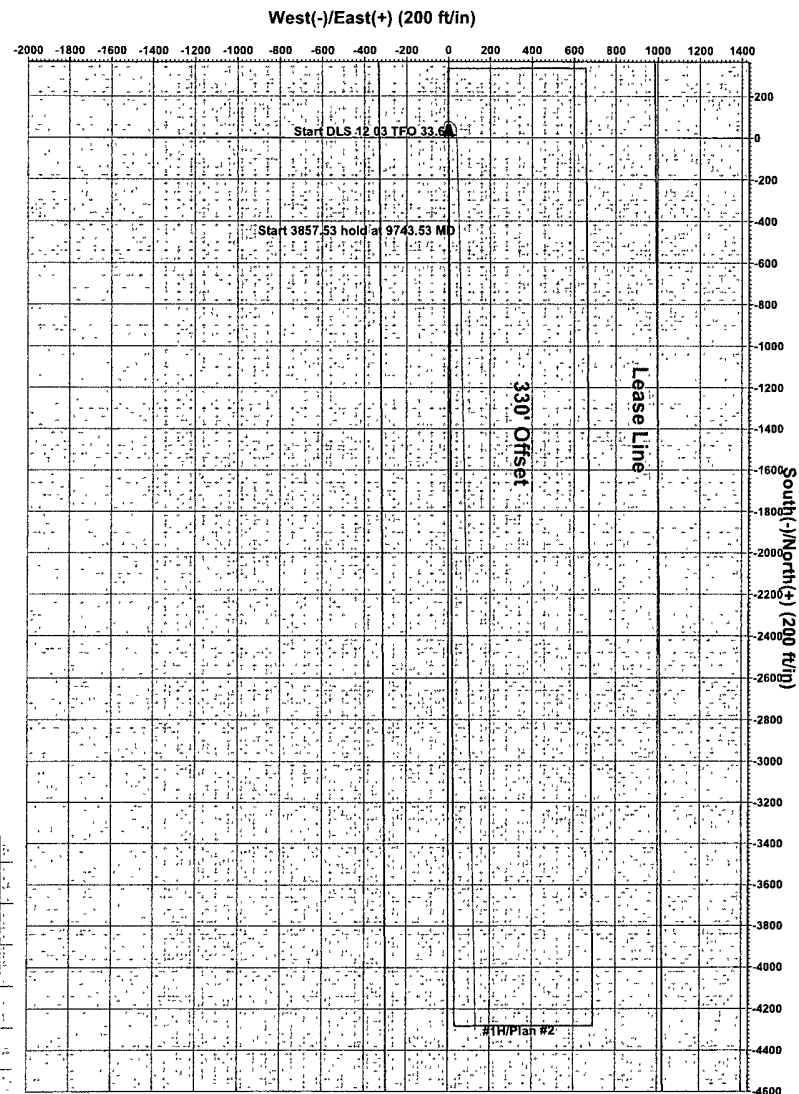
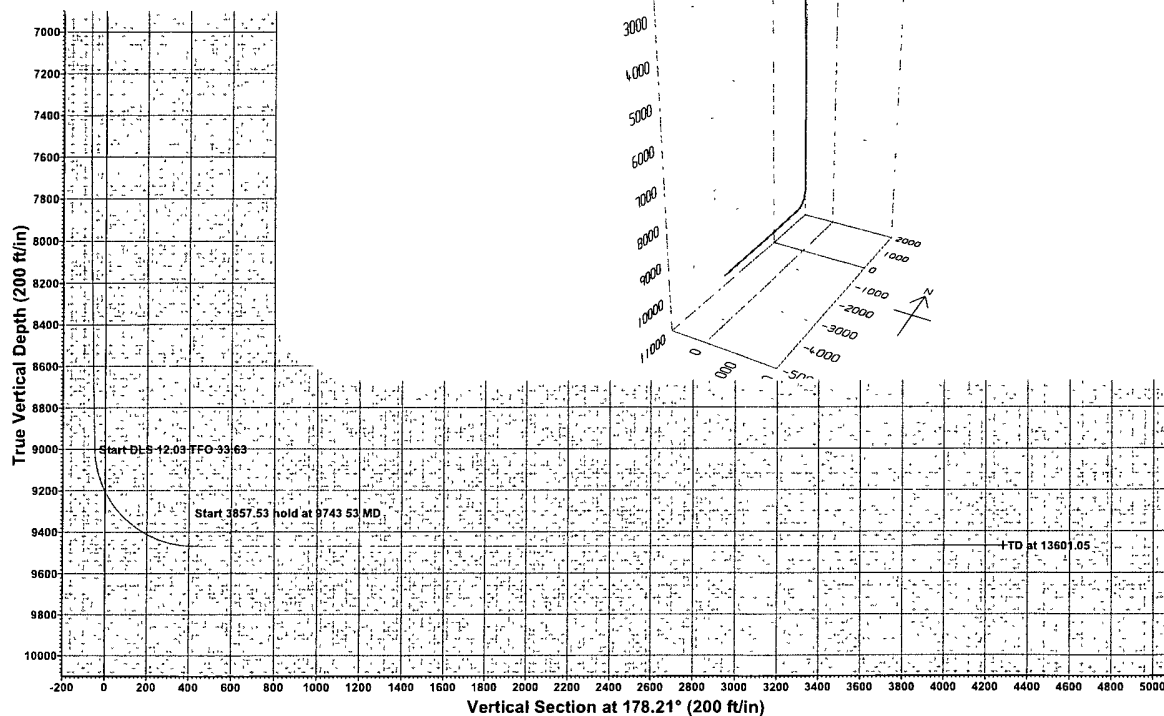
Sec	MD	Inc	Azi	TVD	+N/-S	+E/-W	DLeg	TFace	VSec	Target
1	9605.00	1.37	145.16	9903.32	50.80	35.53	0.00	0.00	-49.66	
2	9743.53	90.00	178.78	9470.00	-425.05	51.83	12.03	33.63	426.47	
3	13601.05	90.00	178.78	9470.00	-4281.71	133.97	0.00	0.00	4283.80	PBHL(#1Diamond)

## WELLBORE TARGET DETAILS (MAP CO-ORDINATES)

Name	TVD	+N/-S	+E/-W	Northing	Easting	Shape
PBHL(#1Diamond)	9470.00	-4281.70	134.20	415156.000	761002.000	Point

## LEGEND

+ Plan #2



Plan: Plan #2 (#1H/OH)

Created By: Nate Bingham Date: 10.38, December 21 2009

Checked: \_\_\_\_\_ Date: \_\_\_\_\_



## **EOG Resources, Inc.**

**Lea County  
Diamond "8" Fed Com  
#1H  
OH**

**Plan: Plan #2**

## **Pathfinder X & Y Planning Report**

**21 December, 2009**

# **PATHFINDER**

<b>Company:</b>	EOG Resources, Inc.	<b>Local Co-ordinate Reference</b>	Well #1H
<b>Project:</b>	Lea County	<b>TVD Reference:</b>	WELL @ 3379.00ft (Original Well Elev)
<b>Site:</b>	Diamond "8" Fed Com	<b>MD Reference:</b>	WELL @ 3379.00ft (Original Well Elev)
<b>Well:</b>	#1H	<b>North Reference:</b>	Grid
<b>Wellbore:</b>	OH	<b>Survey Calculation Method:</b>	Minimum Curvature
<b>Design:</b>	Plan #2	<b>Database:</b>	Midland Database

Project	Lea County		
Map System:	US State Plane 1927 (Exact solution)	System Datum:	Mean Sea Level
Geo Datum:	NAD 1927 (NADCON CONUS)		
Map Zone:	New Mexico East 3001		

Site		Diamond "8" Fed Com									
Site Position:		Northing:		415,538.700 ft		Latitude:		32° 8' 22.525 N			
From:		Map		Easting:		762,548.900 ft		Longitude:		103° 29' 6.406 W	
Position Uncertainty:		0.00 ft		Slot Radius:		"		Grid Convergence:		0.45 °	

Well	#1H					
Well Position	+N/-S	0.00 ft	Northing:	419,437.700 ft	Latitude:	32° 9' 1.238 N
	+E/-W	0.00 ft	Easting:	760,867.800 ft	Longitude:	103° 29' 25.602 W
Position Uncertainty	0.00 ft		Wellhead Elevation:	ft	Ground Level:	3,364.00 ft

Wellbore		OH			
Magnetics	Model Name	Sample Date	Declination (°)	Dip Angle (°)	Field Strength (nT)
	IGRF200510	12/31/2009	7.71	60.19	48,757

Design		Plan #2		
Audit Notes:				
Version:		Phase:	PLAN	Tie On Depth: 9,005.00
Vertical Section:		Depth From (TVD)	+N/-S	+E/-W
		(ft)	(ft)	(ft)
		0.00	0.00	0.00
				Direction
				(°)
				178.21



# Pathfinder Energy Services

## Pathfinder X & Y Planning Report



<b>Company:</b>	EOG Resources, Inc.	<b>Local Co-ordinate Reference:</b>	Well #1H
<b>Project:</b>	Lea County	<b>TVD Reference:</b>	WELL @ 3379.00ft (Original Well Elev)
<b>Site:</b>	Diamond "8" Fed Com	<b>MD Reference:</b>	WELL @ 3379 00ft (Original Well Elev)
<b>Well:</b>	#1H	<b>North Reference:</b>	Grid
<b>Wellbore:</b>	OH	<b>Survey Calculation Method:</b>	Minimum Curvature
<b>Design:</b>	Plan #2	<b>Database:</b>	Midland Database

Survey Tool Program		Date 12/21/2009		
From (ft)	To (ft)	Survey (Wellbore)	Tool Name	Description
50.00	9,005.00	GYRO (OH)	Gyro	Gyro
9,005.00	13,600.87	Plan #2 (OH)	MWD	MWD - Standard

Planned Survey											
MD (ft)	Inc (°)	Azi (°)	TVD (ft)	TVDSS (ft)	N/S (ft)	E/W (ft)	V. Sec (ft)	DLeg (%/100ft)	Northing (ft)	Easting (ft)	
0 00	0.00	0.00	0.00	-3,379.00	0 00	0.00	0.00	0.00	419,437.70	760,867.80	
50.00	0.84	338.04	50 00	-3,329.00	0.34	-0.14	-0.34	1.68	419,438.04	760,867.66	
100.00	0.91	340 02	99.99	-3,279.01	1 05	-0.41	-1.07	0 15	419,438 75	760,867.39	
150.00	0.95	335 90	149.99	-3,229.01	1.80	-0.71	-1.83	0.16	419,439.50	760,867 09	
200 00	0.95	339.05	199 98	-3,179.02	2.57	-1 03	-2.60	0.10	419,440.27	760,866.77	
250.00	1 03	336 93	249.97	-3,129.03	3.37	-1.36	-3.41	0.18	419,441.07	760,866.44	
300 00	1.03	341.59	299.96	-3,079.04	4.21	-1.67	-4.26	0 17	419,441.91	760,866.13	
350.00	1.07	338 73	349 95	-3,029.05	5.07	-1.99	-5.13	0.13	419,442.77	760,865.81	
400.00	1.01	340.84	399 95	-2,979.05	5.92	-2.30	-5.99	0.14	419,443 62	760,865.50	
450.00	1.12	339.08	449 94	-2,929 06	6.80	-2 62	-6.87	0.23	419,444.50	760,865.18	
500.00	1.40	328.51	499.93	-2,879 07	7 77	-3 11	-7 87	0 73	419,445.47	760,864.69	
550.00	1.46	325.67	549 91	-2,829.09	8.82	-3 79	-8 93	0 19	419,446.52	760,864.01	
600.00	1.45	326.18	599.89	-2,779.11	9.87	-4 50	-10.01	0 03	419,447.57	760,863.30	
650.00	1 48	326.97	649 88	-2,729 12	10.94	-5.21	-11.10	0.07	419,448 64	760,862.59	
700.00	1 52	324.86	699.86	-2,679.14	12 02	-5.94	-12.20	0.14	419,449.72	760,861.86	
750.00	1.41	327.60	749.84	-2,629 16	13.08	-6 65	-13 29	0.26	419,450.78	760,861.15	
800.00	1.37	328.04	799 83	-2,579.17	14.11	-7.30	-14 33	0.08	419,451 81	760,860.50	
850 00	1.19	328 54	849.82	-2,529.18	15 06	-7.88	-15.30	0 36	419,452 76	760,859 92	
900.00	1.10	332.07	899.81	-2,479 19	15.93	-8.38	-16 18	0.23	419,453.63	760,859.42	
950 00	0.97	335 14	949 80	-2,429.20	16.74	-8 78	-17.00	0.28	419,454.44	760,859.02	
1,000.00	0.80	338.30	999.79	-2,379.21	17.44	-9.09	-17.72	0.35	419,455.14	760,858 71	



# Pathfinder Energy Services

## Pathfinder X & Y Planning Report



<b>Company:</b>	EOG Resources, Inc.	<b>Local Co-ordinate Reference:</b>	Well #1H
<b>Project:</b>	Lea County	<b>TVD Reference:</b>	WELL @ 3379.00ft (Original Well Elev)
<b>Site:</b>	Diamond "8" Fed Com	<b>MD Reference:</b>	WELL @ 3379.00ft (Original Well Elev)
<b>Well:</b>	#1H	<b>North Reference:</b>	Grid
<b>Wellbore:</b>	OH	<b>Survey Calculation Method:</b>	Minimum Curvature
<b>Design:</b>	Plan #2	<b>Database:</b>	Midland Database

Planned Survey											
MD (ft)	Inc (°)	Azi (°)	TVD (ft)	TVDSS (ft)	N/S (ft)	E/W (ft)	V. Sec (ft)	DLeg (°/100ft)	Northing (ft)	Easting (ft)	
1,050.00	0.76	340.64	1,049.79	-2,329.21	18.08	-9.33	-18.36	0.10	419,455.78	760,858.47	
1,100.00	0.71	342.74	1,099.78	-2,279.22	18.69	-9.53	-18.98	0.11	419,456.39	760,858.27	
1,150.00	0.65	344.99	1,149.78	-2,229.22	19.26	-9.70	-19.55	0.13	419,456.96	760,858.10	
1,200.00	0.60	357.09	1,199.78	-2,179.22	19.79	-9.78	-20.09	0.28	419,457.49	760,858.02	
1,250.00	0.61	352.89	1,249.78	-2,129.22	20.32	-9.83	-20.62	0.09	419,458.02	760,857.97	
1,300.00	0.54	15.95	1,299.77	-2,079.23	20.81	-9.80	-21.11	0.48	419,458.51	760,858.00	
1,350.00	0.53	12.74	1,349.77	-2,029.23	21.26	-9.68	-21.56	0.06	419,458.96	760,858.12	
1,400.00	0.50	29.20	1,399.77	-1,979.23	21.68	-9.52	-21.97	0.30	419,459.38	760,858.28	
1,450.00	0.52	27.93	1,449.77	-1,929.23	22.07	-9.31	-22.35	0.05	419,459.77	760,858.49	
1,500.00	0.43	16.64	1,499.76	-1,879.24	22.45	-9.15	-22.73	0.26	419,460.15	760,858.65	
1,550.00	0.47	23.59	1,549.76	-1,829.24	22.82	-9.02	-23.09	0.14	419,460.52	760,858.78	
1,600.00	0.45	28.21	1,599.76	-1,779.24	23.18	-8.84	-23.44	0.08	419,460.88	760,858.96	
1,650.00	0.48	28.63	1,649.76	-1,729.24	23.54	-8.65	-23.79	0.06	419,461.24	760,859.15	
1,700.00	0.42	5.54	1,699.76	-1,679.24	23.90	-8.53	-24.16	0.38	419,461.60	760,859.27	
1,750.00	0.38	14.94	1,749.76	-1,629.24	24.24	-8.47	-24.50	0.15	419,461.94	760,859.33	
1,800.00	0.37	19.48	1,799.76	-1,579.24	24.56	-8.37	-24.81	0.06	419,462.26	760,859.43	
1,850.00	0.31	5.93	1,849.76	-1,529.24	24.84	-8.30	-25.09	0.20	419,462.54	760,859.50	
1,900.00	0.34	325.05	1,899.75	-1,479.25	25.10	-8.38	-25.35	0.46	419,462.80	760,859.42	
1,950.00	0.35	315.54	1,949.75	-1,429.25	25.33	-8.57	-25.59	0.12	419,463.03	760,859.23	
2,000.00	0.39	311.94	1,999.75	-1,379.25	25.55	-8.80	-25.82	0.09	419,463.25	760,859.00	
2,050.00	0.42	308.83	2,049.75	-1,329.25	25.78	-9.07	-26.05	0.07	419,463.48	760,858.73	
2,100.00	0.53	300.24	2,099.75	-1,279.25	26.01	-9.41	-26.29	0.26	419,463.71	760,858.39	
2,150.00	0.44	301.16	2,149.75	-1,229.25	26.23	-9.78	-26.52	0.18	419,463.93	760,858.02	
2,200.00	0.47	300.24	2,199.75	-1,179.25	26.43	-10.12	-26.73	0.06	419,464.13	760,857.68	
2,250.00	0.49	298.11	2,249.74	-1,129.26	26.64	-10.48	-26.95	0.05	419,464.34	760,857.32	
2,300.00	0.57	296.28	2,299.74	-1,079.26	26.85	-10.90	-27.17	0.16	419,464.55	760,856.90	
2,350.00	0.62	299.03	2,349.74	-1,029.26	27.09	-11.36	-27.43	0.12	419,464.79	760,856.44	



# Pathfinder Energy Services

## Pathfinder X & Y Planning Report



<b>Company:</b>	EOG Resources, Inc	<b>Local Co-ordinate Reference:</b>	Well #1H
<b>Project:</b>	Lea County	<b>TVD Reference:</b>	WELL @ 3379.00ft (Original Well Elev)
<b>Site:</b>	Diamond "8" Fed Com	<b>MD Reference:</b>	WELL @ 3379.00ft (Original Well Elev)
<b>Well:</b>	#1H	<b>North Reference:</b>	Grid
<b>Wellbore:</b>	OH	<b>Survey Calculation Method:</b>	Minimum Curvature
<b>Design:</b>	Plan #2	<b>Database:</b>	Midland Database

Planned Survey										
MD (ft)	Inc (°)	Azi (°)	TVD (ft)	TVDSS (ft)	N/S (ft)	E/W (ft)	V. Sec (ft)	DLeg (%/100ft)	Northing (ft)	Easting (ft)
2,400.00	0.80	299.04	2,399.74	-979.26	27.39	-11.90	-27.75	0.36	419,465.09	760,855.90
2,450.00	0.78	303.15	2,449.73	-929.27	27.74	-12.49	-28.12	0.12	419,465.44	760,855.31
2,500.00	0.81	303.09	2,499.73	-879.27	28.12	-13.07	-28.52	0.06	419,465.82	760,854.73
2,550.00	0.85	307.27	2,549.72	-829.28	28.54	-13.66	-28.95	0.15	419,466.24	760,854.14
2,600.00	1.00	319.81	2,599.71	-779.29	29.10	-14.24	-29.53	0.50	419,466.80	760,853.56
2,650.00	1.22	324.20	2,649.71	-729.29	29.86	-14.83	-30.31	0.47	419,467.56	760,852.97
2,700.00	1.33	332.10	2,699.69	-679.31	30.81	-15.41	-31.27	0.41	419,468.51	760,852.39
2,750.00	1.44	334.07	2,749.68	-629.32	31.89	-15.96	-32.37	0.24	419,469.59	760,851.84
2,800.00	1.53	337.10	2,799.66	-579.34	33.07	-16.49	-33.57	0.24	419,470.77	760,851.31
2,850.00	1.69	338.64	2,849.64	-529.36	34.37	-17.02	-34.88	0.33	419,472.07	760,850.78
2,900.00	1.87	343.81	2,899.62	-479.38	35.84	-17.52	-36.37	0.48	419,473.54	760,850.28
2,950.00	2.10	344.13	2,949.59	-429.41	37.50	-18.00	-38.05	0.46	419,475.20	760,849.80
3,000.00	2.34	348.63	2,999.55	-379.45	39.38	-18.45	-39.94	0.59	419,477.08	760,849.35
3,050.00	2.43	349.06	3,049.51	-329.49	41.43	-18.85	-41.99	0.18	419,479.13	760,848.95
3,100.00	2.56	349.20	3,099.46	-279.54	43.56	-19.26	-44.14	0.26	419,481.26	760,848.54
3,150.00	2.56	350.62	3,149.41	-229.59	45.76	-19.65	-46.35	0.13	419,483.46	760,848.15
3,200.00	2.61	350.08	3,199.36	-179.64	47.98	-20.03	-48.59	0.11	419,485.68	760,847.77
3,250.00	2.62	350.60	3,249.31	-129.69	50.23	-20.41	-50.85	0.05	419,487.93	760,847.39
3,300.00	2.56	351.83	3,299.26	-79.74	52.47	-20.76	-53.09	0.16	419,490.17	760,847.04
3,350.00	2.42	355.70	3,349.21	-29.79	54.62	-20.99	-55.25	0.44	419,492.32	760,846.81
3,400.00	2.17	359.93	3,399.17	20.17	56.62	-21.08	-57.25	0.60	419,494.32	760,846.72
3,450.00	2.07	389	3,449.13	70.13	58.47	-21.02	-59.10	0.35	419,496.17	760,846.78
3,500.00	1.90	8.62	3,499.10	120.10	60.19	-20.83	-60.81	0.47	419,497.89	760,846.97
3,550.00	1.87	7.85	3,549.08	170.08	61.82	-20.59	-62.43	0.08	419,499.52	760,847.21
3,600.00	1.79	13.23	3,599.05	220.05	63.39	-20.30	-63.99	0.38	419,501.09	760,847.50
3,650.00	1.60	19.26	3,649.03	270.03	64.81	-19.89	-65.40	0.52	419,502.51	760,847.91
3,700.00	1.55	20.56	3,699.01	320.01	66.10	-19.43	-66.67	0.12	419,503.80	760,848.37



# Pathfinder Energy Services

## Pathfinder X & Y Planning Report



<b>Company:</b>	EOG Resources, Inc.	<b>Local Co-ordinate Reference:</b>	Well #1H
<b>Project:</b>	Lea County	<b>TVD Reference:</b>	WELL @ 3379.00ft (Original Well Elev)
<b>Site:</b>	Diamond "8" Fed Com	<b>MD Reference:</b>	WELL @ 3379.00ft (Original Well Elev)
<b>Well:</b>	#1H	<b>North Reference:</b>	Grid
<b>Wellbore:</b>	OH	<b>Survey Calculation Method:</b>	Minimum Curvature
<b>Design:</b>	Plan #2	<b>Database:</b>	Midland Database

Planned Survey											
MD (ft)	Inc (°)	Azi (°)	TVD (ft)	TVDSS (ft)	N/S (ft)	E/W (ft)	V. Sec (ft)	DLeg (%/100ft)	Northing (ft)	Easting (ft)	
3,750.00	1.40	24.47	3,748.99	369.99	67.29	-18.94	-67.85	0.36	419,504.99	760,848.86	
3,800.00	1.33	28.57	3,798.98	419.98	68.35	-18.41	-68.90	0.24	419,506.05	760,849.39	
3,850.00	1.21	27.70	3,848.97	469.97	69.33	-17.88	-69.86	0.24	419,507.03	760,849.92	
3,900.00	1.11	26.77	3,898.96	519.96	70.23	-17.42	-70.74	0.20	419,507.93	760,850.38	
3,950.00	1.05	31.43	3,948.95	569.95	71.05	-16.96	-71.55	0.21	419,508.75	760,850.84	
4,000.00	1.10	36.59	3,998.94	619.94	71.83	-16.44	-72.31	0.22	419,509.53	760,851.36	
4,050.00	1.03	39.18	4,048.93	669.93	72.56	-15.87	-73.02	0.17	419,510.26	760,851.93	
4,100.00	0.99	42.84	4,098.92	719.92	73.23	-15.29	-73.67	0.15	419,510.93	760,852.51	
4,150.00	1.09	51.18	4,148.92	769.92	73.84	-14.63	-74.26	0.36	419,511.54	760,853.17	
4,200.00	1.09	55.99	4,198.91	819.91	74.41	-13.86	-74.80	0.18	419,512.11	760,853.94	
4,250.00	1.03	55.18	4,248.90	869.90	74.93	-13.10	-75.30	0.12	419,512.63	760,854.70	
4,300.00	1.05	55.68	4,298.89	919.89	75.45	-12.35	-75.79	0.04	419,513.15	760,855.45	
4,350.00	1.20	63.33	4,348.88	969.88	75.94	-11.50	-76.26	0.42	419,513.64	760,856.30	
4,400.00	1.30	68.25	4,398.87	1,019.87	76.38	-10.51	-76.67	0.29	419,514.08	760,857.29	
4,450.00	1.43	72.98	4,448.85	1,069.85	76.78	-9.39	-77.03	0.34	419,514.48	760,858.41	
4,500.00	1.45	73.14	4,498.84	1,119.84	77.14	-8.18	-77.36	0.04	419,514.84	760,859.62	
4,550.00	1.62	77.58	4,548.82	1,169.82	77.48	-6.89	-77.66	0.41	419,515.18	760,860.91	
4,600.00	1.44	74.12	4,598.80	1,219.80	77.80	-5.59	-77.94	0.40	419,515.50	760,862.21	
4,650.00	1.63	83.09	4,648.78	1,269.78	78.06	-4.28	-78.16	0.61	419,515.76	760,863.52	
4,700.00	1.43	87.71	4,698.77	1,319.77	78.17	-2.95	-78.22	0.47	419,515.87	760,864.85	
4,750.00	1.55	89.24	4,748.75	1,369.75	78.20	-1.65	-78.22	0.25	419,515.90	760,866.15	
4,800.00	1.54	92.68	4,798.73	1,419.73	78.18	-0.31	-78.15	0.19	419,515.88	760,867.49	
4,850.00	1.60	95.11	4,848.71	1,469.71	78.09	1.06	-78.02	0.18	419,515.79	760,868.86	
4,900.00	1.68	94.97	4,898.69	1,519.69	77.96	2.48	-77.85	0.16	419,515.66	760,870.28	
4,950.00	1.80	95.41	4,948.67	1,569.67	77.82	4.00	-77.66	0.24	419,515.52	760,871.80	
5,000.00	1.70	96.16	4,998.65	1,619.65	77.67	5.52	-77.46	0.21	419,515.37	760,873.32	
5,050.00	1.45	99.92	5,048.63	1,669.63	77.48	6.88	-77.23	0.54	419,515.18	760,874.68	





**Pathfinder Energy Services**  
Pathfinder X & Y Planning Report



<b>Company:</b>	EOG Resources, Inc.	<b>Local Co-ordinate Reference:</b>	Well #1H
<b>Project:</b>	Lea County	<b>TVD Reference:</b>	WELL @ 3379.00ft (Original Well Elev)
<b>Site:</b>	Diamond "8" Fed Com	<b>MD Reference:</b>	WELL @ 3379.00ft (Original Well Elev)
<b>Well:</b>	#1H	<b>North Reference:</b>	Grid
<b>Wellbore:</b>	OH	<b>Survey Calculation Method:</b>	Minimum Curvature
<b>Design:</b>	Plan #2	<b>Database:</b>	Midland Database

Planned Survey											
MD (ft)	Inc (°)	Azi (°)	TVD (ft)	TVDSS (ft)	N/S (ft)	E/W (ft)	V. Sec (ft)	DLeg (°/100ft)	Northing (ft)	Easting (ft)	
5,100.00	1.15	104.92	5,098.61	1,719.61	77.24	7.98	-76.96	0.64	419,514.94	760,875.78	
5,150.00	1.00	108.22	5,148.60	1,769.60	76.98	8.88	-76.66	0.32	419,514.68	760,876.68	
5,200.00	0.80	107.24	5,198.60	1,819.60	76.74	9.63	-76.40	0.40	419,514.44	760,877.43	
5,250.00	0.72	110.88	5,248.59	1,869.59	76.52	10.26	-76.16	0.19	419,514.22	760,878.06	
5,300.00	0.65	113.32	5,298.59	1,919.59	76.30	10.81	-75.92	0.15	419,514.00	760,878.61	
5,350.00	0.67	126.76	5,348.59	1,969.59	76.01	11.31	-75.62	0.31	419,513.71	760,879.11	
5,400.00	0.65	129.69	5,398.58	2,019.58	75.66	11.76	-75.25	0.08	419,513.36	760,879.56	
5,450.00	0.64	121.64	5,448.58	2,069.58	75.33	12.21	-74.91	0.18	419,513.03	760,880.01	
5,500.00	0.61	117.89	5,498.58	2,119.58	75.06	12.69	-74.62	0.10	419,512.76	760,880.49	
5,550.00	0.60	113.70	5,548.58	2,169.58	74.83	13.16	-74.38	0.09	419,512.53	760,880.96	
5,600.00	0.56	119.99	5,598.57	2,219.57	74.60	13.61	-74.14	0.15	419,512.30	760,881.41	
5,650.00	0.54	127.12	5,648.57	2,269.57	74.34	14.01	-73.86	0.14	419,512.04	760,881.81	
5,700.00	0.47	121.49	5,698.57	2,319.57	74.09	14.38	-73.60	0.17	419,511.79	760,882.18	
5,750.00	0.40	124.22	5,748.57	2,369.57	73.88	14.70	-73.39	0.15	419,511.58	760,882.50	
5,800.00	0.41	118.61	5,798.57	2,419.57	73.70	15.00	-73.19	0.08	419,511.40	760,882.80	
5,850.00	0.37	118.18	5,848.56	2,469.56	73.54	15.30	-73.02	0.08	419,511.24	760,883.10	
5,900.00	0.35	118.16	5,898.56	2,519.56	73.39	15.57	-72.86	0.04	419,511.09	760,883.37	
5,950.00	0.38	109.13	5,948.56	2,569.56	73.26	15.86	-72.73	0.13	419,510.96	760,883.66	
6,000.00	0.39	118.89	5,998.56	2,619.56	73.12	16.17	-72.58	0.13	419,510.82	760,883.97	
6,050.00	0.37	128.22	6,048.56	2,669.56	72.94	16.45	-72.39	0.13	419,510.64	760,884.25	
6,100.00	0.33	142.36	6,098.56	2,719.56	72.73	16.66	-72.17	0.19	419,510.43	760,884.46	
6,150.00	0.22	143.73	6,148.56	2,769.56	72.54	16.81	-71.98	0.22	419,510.24	760,884.61	
6,200.00	0.26	167.71	6,198.56	2,819.56	72.35	16.89	-71.78	0.21	419,510.05	760,884.69	
6,250.00	0.21	150.31	6,248.56	2,869.56	72.16	16.96	-71.59	0.17	419,509.86	760,884.76	
6,300.00	0.18	144.82	6,298.56	2,919.56	72.01	17.05	-71.45	0.07	419,509.71	760,884.85	
6,350.00	0.23	142.29	6,348.56	2,969.56	71.87	17.15	-71.30	0.10	419,509.57	760,884.95	
6,400.00	0.25	149.42	6,398.56	3,019.56	71.70	17.27	-71.12	0.07	419,509.40	760,885.07	





# Pathfinder Energy Services

## Pathfinder X & Y Planning Report



<b>Company:</b>	EOG Resources, Inc.	<b>Local Co-ordinate Reference:</b>	Well #1H
<b>Project:</b>	Lea County	<b>TVD Reference:</b>	WELL @ 3379.00ft (Original Well Elev)
<b>Site:</b>	Diamond "8" Fed Com	<b>MD Reference:</b>	WELL @ 3379.00ft (Original Well Elev)
<b>Well:</b>	#1H	<b>North Reference:</b>	Grid
<b>Wellbore:</b>	OH	<b>Survey Calculation Method:</b>	Minimum Curvature
<b>Design:</b>	Plan #2	<b>Database:</b>	Midland Database

Planned Survey										
MD (ft)	Inc (°)	Azi (°)	TVD (ft)	TVDSS (ft)	N/S (ft)	E/W (ft)	V. Sec (ft)	DLeg (%/100ft)	Northing (ft)	Easting (ft)
6,450.00	0.24	143.84	6,448.56	3,069.56	71.52	17.39	-70.94	0.05	419,509.22	760,885.19
6,500.00	0.25	161.74	6,498.56	3,119.56	71.33	17.48	-70.75	0.15	419,509.03	760,885.28
6,550.00	0.19	151.60	6,548.56	3,169.56	71.15	17.56	-70.57	0.14	419,508.85	760,885.36
6,600.00	0.22	160.87	6,598.56	3,219.56	70.99	17.63	-70.40	0.09	419,508.69	760,885.43
6,650.00	0.20	145.72	6,648.56	3,269.56	70.83	17.71	-70.24	0.12	419,508.53	760,885.51
6,700.00	0.20	137.73	6,698.55	3,319.55	70.69	17.82	-70.10	0.06	419,508.39	760,885.62
6,750.00	0.25	154.49	6,748.55	3,369.55	70.53	17.92	-69.93	0.16	419,508.23	760,885.72
6,800.00	0.16	125.41	6,798.55	3,419.55	70.39	18.03	-69.79	0.27	419,508.09	760,885.83
6,850.00	0.18	138.14	6,848.55	3,469.55	70.29	18.14	-69.69	0.09	419,507.99	760,885.94
6,900.00	0.16	118.67	6,898.55	3,519.55	70.20	18.25	-69.59	0.12	419,507.90	760,886.05
6,950.00	0.18	115.32	6,948.55	3,569.55	70.13	18.38	-69.52	0.04	419,507.83	760,886.18
7,000.00	0.17	126.94	6,998.55	3,619.55	70.05	18.51	-69.44	0.07	419,507.75	760,886.31
7,050.00	0.18	119.55	7,048.55	3,669.55	69.97	18.64	-69.35	0.05	419,507.67	760,886.44
7,100.00	0.16	121.64	7,098.55	3,719.55	69.89	18.77	-69.27	0.04	419,507.59	760,886.57
7,150.00	0.15	117.06	7,148.55	3,769.55	69.83	18.88	-69.20	0.03	419,507.53	760,886.68
7,200.00	0.17	103.99	7,198.55	3,819.55	69.78	19.01	-69.15	0.08	419,507.48	760,886.81
7,250.00	0.19	125.47	7,248.55	3,869.55	69.71	19.15	-69.08	0.14	419,507.41	760,886.95
7,300.00	0.16	118.01	7,298.55	3,919.55	69.63	19.28	-69.00	0.08	419,507.33	760,887.08
7,350.00	0.17	120.25	7,348.55	3,969.55	69.56	19.41	-68.92	0.02	419,507.26	760,887.21
7,400.00	0.15	91.67	7,398.55	4,019.55	69.52	19.54	-68.88	0.16	419,507.22	760,887.34
7,450.00	0.18	103.16	7,448.55	4,069.55	69.50	19.68	-68.85	0.09	419,507.20	760,887.48
7,500.00	0.19	94.91	7,498.55	4,119.55	69.48	19.84	-68.82	0.06	419,507.18	760,887.64
7,550.00	0.20	105.92	7,548.55	4,169.55	69.45	20.01	-68.79	0.08	419,507.15	760,887.81
7,600.00	0.17	125.14	7,598.55	4,219.55	69.38	20.15	-68.72	0.14	419,507.08	760,887.95
7,650.00	0.18	111.63	7,648.55	4,269.55	69.31	20.28	-68.64	0.08	419,507.01	760,888.08
7,700.00	0.27	106.08	7,698.55	4,319.55	69.25	20.47	-68.57	0.18	419,506.95	760,888.27
7,750.00	0.39	118.17	7,748.55	4,369.55	69.14	20.73	-68.45	0.28	419,506.84	760,888.53



# Pathfinder Energy Services

## Pathfinder X & Y Planning Report



<b>Company:</b>	EOG Resources, Inc.	<b>Local Co-ordinate Reference:</b>	Well #1H
<b>Project:</b>	Lea County	<b>TVD Reference:</b>	WELL @ 3379.00ft (Original Well Elev)
<b>Site:</b>	Diamond "8" Fed Com	<b>MD Reference:</b>	WELL @ 3379.00ft (Original Well Elev)
<b>Well:</b>	#1H	<b>North Reference:</b>	Grid
<b>Wellbore:</b>	OH	<b>Survey Calculation Method:</b>	Minimum Curvature
<b>Design:</b>	Plan #2	<b>Database:</b>	Midland Database

Planned Survey										
MD (ft)	Inc (°)	Azi (°)	TVD (ft)	TVDSS (ft)	N/S (ft)	E/W (ft)	V. Sec (ft)	DLeg (°/100ft)	Northing (ft)	Easting (ft)
7,800.00	0.60	131.37	7,798.55	4,419.55	68.88	21.08	-68.19	0.48	419,506.58	760,888.88
7,850.00	0.80	138.16	7,848.54	4,469.54	68.45	21.51	-67.74	0.43	419,506.15	760,889.31
7,900.00	0.80	136.06	7,898.54	4,519.54	67.94	21.98	-67.22	0.06	419,505.64	760,889.78
7,950.00	0.83	135.47	7,948.53	4,569.53	67.43	22.48	-66.69	0.06	419,505.13	760,890.28
8,000.00	0.93	134.34	7,998.53	4,619.53	66.89	23.02	-66.13	0.20	419,504.59	760,890.82
8,050.00	0.99	134.08	8,048.52	4,669.52	66.30	23.63	-65.53	0.12	419,504.00	760,891.43
8,100.00	1.00	136.65	8,098.51	4,719.51	65.68	24.24	-64.89	0.09	419,503.38	760,892.04
8,150.00	0.98	137.04	8,148.51	4,769.51	65.05	24.83	-64.25	0.04	419,502.75	760,892.63
8,200.00	1.01	137.44	8,198.50	4,819.50	64.42	25.42	-63.59	0.06	419,502.12	760,893.22
8,250.00	1.02	139.34	8,248.49	4,869.49	63.75	26.00	-62.91	0.07	419,501.45	760,893.80
8,300.00	1.08	142.30	8,298.48	4,919.48	63.04	26.58	-62.18	0.16	419,500.74	760,894.38
8,350.00	1.12	144.36	8,348.47	4,969.47	62.27	27.15	-61.39	0.11	419,499.97	760,894.95
8,400.00	1.13	145.38	8,398.46	5,019.46	61.47	27.72	-60.57	0.04	419,499.17	760,895.52
8,450.00	1.07	143.80	8,448.45	5,069.45	60.69	28.28	-59.77	0.13	419,498.39	760,896.08
8,500.00	1.16	144.45	8,498.44	5,119.44	59.90	28.85	-58.97	0.18	419,497.60	760,896.65
8,550.00	1.23	145.06	8,548.43	5,169.43	59.05	29.45	-58.10	0.14	419,496.75	760,897.25
8,600.00	1.24	144.97	8,598.42	5,219.42	58.17	30.06	-57.20	0.02	419,495.87	760,897.86
8,650.00	1.24	145.73	8,648.41	5,269.41	57.28	30.68	-56.29	0.03	419,494.98	760,898.48
8,700.00	1.27	142.32	8,698.40	5,319.40	56.39	31.32	-55.38	0.16	419,494.09	760,899.12
8,750.00	1.31	143.78	8,748.39	5,369.39	55.49	32.00	-54.46	0.10	419,493.19	760,899.80
8,800.00	1.33	144.55	8,798.37	5,419.37	54.56	32.67	-53.51	0.05	419,492.26	760,900.47
8,850.00	1.28	143.49	8,848.36	5,469.36	53.63	33.34	-52.57	0.11	419,491.33	760,901.14
8,900.00	1.31	140.85	8,898.35	5,519.35	52.74	34.04	-51.65	0.13	419,490.44	760,901.84
8,950.00	1.34	141.43	8,948.33	5,569.33	51.84	34.76	-50.73	0.07	419,489.54	760,902.56
9,000.00	1.37	145.36	8,998.32	5,619.32	50.89	35.47	-49.76	0.20	419,488.59	760,903.27
9,005.00	1.37	145.16	9,003.32	5,624.32	50.80	35.53	-49.66	0.11	419,488.50	760,903.33
9,025.00	3.62	166.74	9,023.30	5,644.30	49.98	35.81	-48.84	12.03	419,487.68	760,903.61



# Pathfinder Energy Services

## Pathfinder X & Y Planning Report



<b>Company:</b>	EOG Resources, Inc.	<b>Local Co-ordinate Reference:</b>	Well #1H
<b>Project:</b>	Lea County	<b>TVD Reference:</b>	WELL @ 3379.00ft (Original Well Elev)
<b>Site:</b>	Diamond "8" Fed Com	<b>MD Reference:</b>	WELL @ 3379.00ft (Original Well Elev)
<b>Well:</b>	#1H	<b>North Reference:</b>	Grid
<b>Wellbore:</b>	OH	<b>Survey Calculation Method:</b>	Minimum Curvature
<b>Design:</b>	Plan #2	<b>Database:</b>	Midland Database

Planned Survey										
MD (ft)	Inc (°)	Azi (°)	TVD (ft)	TVDSS (ft)	N/S (ft)	E/W (ft)	V. Sec (ft)	DLeg (°/100ft)	Northing (ft)	Easting (ft)
9,050.00	6.60	172.22	9,048.20	5,669.20	47.79	36.19	-46.64	12.03	419,485.49	760,903.99
9,075.00	9.59	174.30	9,072.94	5,693.94	44.30	36.59	-43.13	12.03	419,482.00	760,904.39
9,100.00	12.59	175.39	9,097.47	5,718.47	39.51	37.02	-38.33	12.03	419,477.21	760,904.82
9,125.00	15.59	176.07	9,121.72	5,742.72	33.44	37.47	-32.25	12.03	419,471.14	760,905.27
9,150.00	18.60	176.53	9,145.61	5,766.61	26.10	37.94	-24.90	12.03	419,463.80	760,905.74
9,175.00	21.61	176.87	9,169.09	5,790.09	17.53	38.43	-16.31	12.03	419,455.23	760,906.23
9,200.00	24.61	177.13	9,192.08	5,813.08	7.73	38.95	-6.51	12.03	419,445.43	760,906.75
9,225.00	27.62	177.33	9,214.52	5,835.52	-3.26	39.48	4.50	12.03	419,434.44	760,907.28
9,250.00	30.63	177.50	9,236.36	5,857.36	-15.42	40.02	16.66	12.03	419,422.28	760,907.82
9,275.00	33.63	177.64	9,257.53	5,878.53	-28.70	40.59	29.95	12.03	419,409.00	760,908.39
9,300.00	36.64	177.76	9,277.97	5,898.97	-43.07	41.16	44.34	12.03	419,394.63	760,908.96
9,325.00	39.65	177.87	9,297.63	5,918.63	-58.50	41.75	59.78	12.03	419,379.20	760,909.55
9,350.00	42.66	177.96	9,316.45	5,937.45	-74.94	42.35	76.23	12.03	419,362.76	760,910.15
9,375.00	45.66	178.04	9,334.38	5,955.38	-92.34	42.96	93.64	12.03	419,345.36	760,910.76
9,400.00	48.67	178.11	9,351.38	5,972.38	-110.66	43.57	111.97	12.03	419,327.04	760,911.37
9,425.00	51.68	178.18	9,367.39	5,988.39	-129.85	44.19	131.17	12.03	419,307.85	760,911.99
9,450.00	54.69	178.24	9,382.37	6,003.37	-149.85	44.82	151.18	12.03	419,287.85	760,912.62
9,475.00	57.69	178.30	9,396.28	6,017.28	-170.61	45.44	171.95	12.03	419,267.09	760,913.24
9,500.00	60.70	178.36	9,409.08	6,030.08	-192.08	46.07	193.42	12.03	419,245.62	760,913.87
9,525.00	63.71	178.41	9,420.74	6,041.74	-214.18	46.69	215.54	12.03	419,223.52	760,914.49
9,550.00	66.72	178.45	9,431.22	6,052.22	-236.87	47.31	238.23	12.03	419,200.83	760,915.11
9,575.00	69.72	178.50	9,440.49	6,061.49	-260.07	47.93	261.44	12.03	419,177.63	760,915.73
9,600.00	72.73	178.54	9,448.54	6,069.54	-283.73	48.54	285.11	12.03	419,153.97	760,916.34
9,625.00	75.74	178.59	9,455.33	6,076.33	-307.78	49.14	309.17	12.03	419,129.92	760,916.94
9,650.00	78.75	178.63	9,460.85	6,081.85	-332.15	49.73	333.54	12.03	419,105.55	760,917.53
9,675.00	81.76	178.67	9,465.08	6,086.08	-356.78	50.32	358.18	12.03	419,080.92	760,918.12
9,700.00	84.76	178.71	9,468.01	6,089.01	-381.60	50.88	383.00	12.03	419,056.10	760,918.68



# Pathfinder Energy Services

## Pathfinder X & Y Planning Report



<b>Company:</b>	EOG Resources, Inc.	<b>Local Co-ordinate Reference:</b>	Well #1H
<b>Project:</b>	Lea County	<b>TVD Reference:</b>	WELL @ 3379.00ft (Original Well Elev)
<b>Site:</b>	Diamond "8" Fed Com	<b>MD Reference:</b>	WELL @ 3379.00ft (Original Well Elev)
<b>Well:</b>	#1H	<b>North Reference:</b>	Grid
<b>Wellbore:</b>	OH	<b>Survey Calculation Method:</b>	Minimum Curvature
<b>Design:</b>	Plan #2	<b>Database:</b>	Midland Database

Planned Survey										
MD (ft)	Inc (°)	Azi (°)	TVD (ft)	TVDSS (ft)	N/S (ft)	E/W (ft)	V- Sec (ft)	DLeg (°/100ft)	Northing (ft)	Easting (ft)
9,725.00	87.77	178.75	9,469.64	6,090.64	-406.54	51.44	407.95	12.03	419,031.16	760,919.24
9,743.53	90.00	178.78	9,470.00	6,091.00	-425.05	51.83	426.47	12.03	419,012.65	760,919.63
9,800.00	90.00	178.78	9,470.00	6,091.00	-481.52	53.04	482.94	0.00	418,956.18	760,920.84
9,900.00	90.00	178.78	9,470.00	6,091.00	-581.49	55.17	582.93	0.00	418,856.21	760,922.97
10,000.00	90.00	178.78	9,470.00	6,091.00	-681.47	57.29	682.93	0.00	418,756.23	760,925.09
10,100.00	90.00	178.78	9,470.00	6,091.00	-781.45	59.42	782.92	0.00	418,656.25	760,927.22
10,200.00	90.00	178.78	9,470.00	6,091.00	-881.42	61.55	882.92	0.00	418,556.28	760,929.35
10,300.00	90.00	178.78	9,470.00	6,091.00	-981.40	63.68	982.91	0.00	418,456.30	760,931.48
10,400.00	90.00	178.78	9,470.00	6,091.00	-1,081.38	65.81	1,082.91	0.00	418,356.32	760,933.61
10,500.00	90.00	178.78	9,470.00	6,091.00	-1,181.36	67.94	1,182.90	0.00	418,256.34	760,935.74
10,600.00	90.00	178.78	9,470.00	6,091.00	-1,281.33	70.07	1,282.90	0.00	418,156.37	760,937.87
10,700.00	90.00	178.78	9,470.00	6,091.00	-1,381.31	72.20	1,382.89	0.00	418,056.39	760,940.00
10,800.00	90.00	178.78	9,470.00	6,091.00	-1,481.29	74.33	1,482.89	0.00	417,956.41	760,942.13
10,900.00	90.00	178.78	9,470.00	6,091.00	-1,581.27	76.46	1,582.88	0.00	417,856.43	760,944.26
11,000.00	90.00	178.78	9,470.00	6,091.00	-1,681.24	78.59	1,682.88	0.00	417,756.46	760,946.39
11,100.00	90.00	178.78	9,470.00	6,091.00	-1,781.22	80.72	1,782.87	0.00	417,656.48	760,948.52
11,200.00	90.00	178.78	9,470.00	6,091.00	-1,881.20	82.84	1,882.87	0.00	417,556.50	760,950.64
11,300.00	90.00	178.78	9,470.00	6,091.00	-1,981.18	84.97	1,982.86	0.00	417,456.52	760,952.77
11,400.00	90.00	178.78	9,470.00	6,091.00	-2,081.15	87.10	2,082.86	0.00	417,356.55	760,954.90
11,500.00	90.00	178.78	9,470.00	6,091.00	-2,181.13	89.23	2,182.85	0.00	417,256.57	760,957.03
11,600.00	90.00	178.78	9,470.00	6,091.00	-2,281.11	91.36	2,282.85	0.00	417,156.59	760,959.16
11,700.00	90.00	178.78	9,470.00	6,091.00	-2,381.08	93.49	2,382.84	0.00	417,056.62	760,961.29
11,800.00	90.00	178.78	9,470.00	6,091.00	-2,481.06	95.62	2,482.84	0.00	416,956.64	760,963.42
11,900.00	90.00	178.78	9,470.00	6,091.00	-2,581.04	97.75	2,582.83	0.00	416,856.66	760,965.55
12,000.00	90.00	178.78	9,470.00	6,091.00	-2,681.02	99.88	2,682.83	0.00	416,756.68	760,967.68
12,100.00	90.00	178.78	9,470.00	6,091.00	-2,780.99	102.01	2,782.82	0.00	416,656.71	760,969.81
12,200.00	90.00	178.78	9,470.00	6,091.00	-2,880.97	104.14	2,882.82	0.00	416,556.73	760,971.94



Pathfinder Energy Services  
Pathfinder X & Y Planning Report



Company: EOG Resources, Inc.  
Project: Lea County  
Site: Diamond "8" Fed Com  
Well: #1H  
Wellbore: OH  
Design: Plan #2

Local Co-ordinate Reference: Well #1H  
TVD Reference: WELL @ 3379.00ft (Original Well Elev)  
MD Reference: WELL @ 3379.00ft (Original Well Elev)  
North Reference: Grid  
Survey Calculation Method: Minimum Curvature  
Database: Midland Database

Planned Survey

MD (ft)	Inc (°)	Azi (°)	TVD (ft)	TVDSS (ft)	N/S (ft)	E/W (ft)	V. Sec (ft)	DLeg (%/100ft)	Northing (ft)	Easting (ft)
12,300.00	90.00	178.78	9,470.00	6,091.00	-2,980.95	106.27	2,982.81	0.00	416,456.75	760,974.07
12,400.00	90.00	178.78	9,470.00	6,091.00	-3,080.93	108.39	3,082.81	0.00	416,356.77	760,976.19
12,500.00	90.00	178.78	9,470.00	6,091.00	-3,180.90	110.52	3,182.80	0.00	416,256.80	760,978.32
12,600.00	90.00	178.78	9,470.00	6,091.00	-3,280.88	112.65	3,282.80	0.00	416,156.82	760,980.45
12,700.00	90.00	178.78	9,470.00	6,091.00	-3,380.86	114.78	3,382.79	0.00	416,056.84	760,982.58
12,800.00	90.00	178.78	9,470.00	6,091.00	-3,480.84	116.91	3,482.79	0.00	415,956.86	760,984.71
12,900.00	90.00	178.78	9,470.00	6,091.00	-3,580.81	119.04	3,582.78	0.00	415,856.89	760,986.84
13,000.00	90.00	178.78	9,470.00	6,091.00	-3,680.79	121.17	3,682.78	0.00	415,756.91	760,988.97
13,100.00	90.00	178.78	9,470.00	6,091.00	-3,780.77	123.30	3,782.77	0.00	415,656.93	760,991.10
13,200.00	90.00	178.78	9,470.00	6,091.00	-3,880.74	125.43	3,882.77	0.00	415,556.96	760,993.23
13,300.00	90.00	178.78	9,470.00	6,091.00	-3,980.72	127.56	3,982.76	0.00	415,456.98	760,995.36
13,400.00	90.00	178.78	9,470.00	6,091.00	-4,080.70	129.69	4,082.76	0.00	415,357.00	760,997.49
13,500.00	90.00	178.78	9,470.00	6,091.00	-4,180.68	131.81	4,182.75	0.00	415,257.02	760,999.61
13,601.05	90.00	178.78	9,470.00	6,091.00	-4,281.71	133.97	4,283.80	0.00	415,155.99	761,001.77

Targets

Target Name - hit/miss target - Shape	Dip Angle (°)	Dip Dir. (°)	TVD (ft)	+N/-S (ft)	+E/-W (ft)	Northing (ft)	Easting (ft)	Latitude	Longitude
PBHL(#1Diamond) - plan hits target - Point	0.00	0.00	9,470.00	-4,281.70	134.20	415,156.000	761,002.000	32° 8' 18.858 N	103° 29' 24.431 W

Checked By: \_\_\_\_\_ Approved By: \_\_\_\_\_ Date: \_\_\_\_\_

# EOG Resources, Inc.

Legals:

**Diamond "8" FED. COM #1H**

Lea Co. New Mexico

**660' FNL & 2310' FEL Surface Location**

**Section 8**

**T-25-S, R-34-E**

**Lat: N 32.1503439**

**Long: W 103.4904449**

**330' FSL & 2210' FEL Bottom Hole Location**

**Section 8**

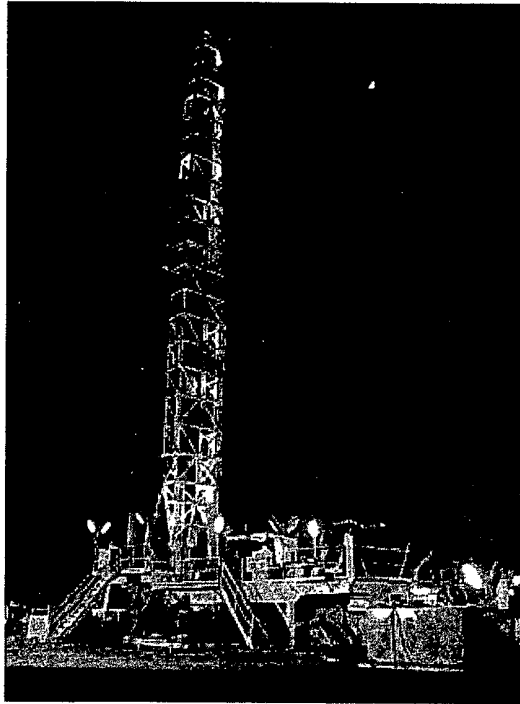
**T-25-S, R-34-E**

**Lat: N 32.1385717**

**Long: W 103.4901196**

## **H<sub>2</sub>S**

# **"Contingency Plan"**



**Safety Solutions, LLC**  
**3222 Commercial Dr.**

**(432) 686-8555**  
**Midland, TX 79701**

## **Table of Contents**

### **I. H<sub>2</sub>S Contingency Plan**

- a. Scope
- b. Objective
- c. Discussion of Plan

### **II. Emergency Procedures**

- a. Emergency Procedures
- b. Emergency Reaction Steps
- c. Simulated Blowout Control Drills

### **III. Ignition Procedures**

- a. Responsibility
- b. Instructions

### **IV. Training Requirements**

### **V. Emergency Equipment**

### **VI. Check Lists**

- a. Status Check List
- b. Procedural Check List

### **VII. Briefing Procedures**

### **VIII. Evacuation Plan**

- a. General Plan
- b. Emergency Phone Lists

### **IX. Maps and Plats**

- a. Location Plat
- b. Map to Location
- c. Radius of Exposure

### **X. General Information**

- a. Drilling/Re-entry Permits
- b. H-9 Permit
- c. H<sub>2</sub>S Permissible Limits
- d. Toxicity Table
- e. Physical Properties
- f. Respirator Use
- g. Emergency Rescue



## H<sub>2</sub>S CONTINGENCY PLAN SECTION

### **Scope:**

This contingency plan provides an organized plan of action for alerting and protecting the public within an area of exposure prior to an intentional release, or following the accidental release of a potentially hazardous volume of hydrogen sulfide. The plan establishes guidelines for all personnel whose work activity may involve exposure to Hydrogen Sulfide Gas (H<sub>2</sub>S).

### **Objective:**

Prevent any and all accidents, and prevent the uncontrolled release of H<sub>2</sub>S into the atmosphere.

Provide proper evacuation procedures to cope with emergencies.

Provide immediate and adequate medical attention should an injury occur.

### **Discussion of Plan:**

#### **Suspected Problem Zones:**

**Implementation:** This plan, with all details, is to be fully implemented 1000' before drilling into the first sour zone.

**Emergency Response Procedure:** This section outlines the conditions and denotes steps to be taken in the event of an emergency.

**Emergency Equipment and Procedure:** This section outlines the safety and emergency equipment that will be required for the drilling of this well.

**Training Provisions:** This section outlines the training provisions that must be adhered to 1000' before drilling into the first sour zone.

**Emergency call list:** Included are the telephone numbers of all persons that would need to be contacted, should an H<sub>2</sub>S emergency occur.

**Briefing:** This section deals with the briefing of all persons involved with the drilling of this well.

**Public Safety:** Public Safety Personnel will be made aware of the drilling of this well.

**Check Lists:** Status check lists and procedural check lists have been included to ensure adherence to the plan.

**General Information:** A general information section has been included to supply support information.

## **EMERGENCY PROCEDURES SECTION**

- I. In the event of any evidence of H<sub>2</sub>S level above 10ppm, take the following steps immediately:
  - a. Secure breathing apparatus.
  - b. Order non-essential personnel out of the danger zone.
  - c. Take steps to determine if the H<sub>2</sub>S level can be corrected or suppressed, and if so, proceed with normal operations.
- II. If uncontrollable conditions occur, proceed with the following:
  - a. Take steps to protect and/or remove any public downwind of the rig, including partial evacuation or isolation. Notify necessary public safety personnel and the New Mexico Oil Conservation Division of the situation.
  - b. Remove all personnel to the Safe Briefing Area.
  - c. Notify public safety personnel for help with maintaining roadblocks and implementing evacuation.
  - d. Determine and proceed with the best possible plan to regain control of the well. Maintain tight security and safety measures.
- III. Responsibility:
  - a. The Company Approved Supervisor shall be responsible for the total implementation of the plan.
  - b. The Company Approved Supervisor shall be in complete command during any emergency.
  - c. The Company Approved Supervisor shall designate a back up Supervisor in the event that he/she is not available.

## EMERGENCY PROCEDURE IMPLEMENTATION

### I. Drilling or Tripping

#### a. All Personnel

- i. When alarm sounds, don escape unit and report to upwind Safe Briefing Area.
- ii. Check status of other personnel (buddy system).
- iii. Secure breathing apparatus.
- iv. Wait for orders from supervisor.

#### b. Drilling Foreman

- i. Report to the upwind Safe Briefing Area.
- ii. Don Breathing Apparatus and return to the point of release with the Tool Pusher or Driller (buddy system).
- iii. Determine the concentration of H<sub>2</sub>S.
- iv. Assess the situation and take appropriate control measures.

#### c. Tool Pusher

- i. Report to the upwind Safe Briefing Area.
- ii. Don Breathing Apparatus and return to the point of release with the Drilling Foreman or the Driller (buddy system).
- iii. Determine the concentration of H<sub>2</sub>S.
- iv. Assess the situation and take appropriate control measures.

#### d. Driller

- i. Check the status of other personnel (in a rescue attempt, always use the buddy system).
- ii. Assign the least essential person to notify the Drilling Foreman and Tool Pusher, in the event of their absence.
- iii. Assume the responsibility of the Drilling Foreman and the Tool Pusher until they arrive, in the event of their absence.

***e. Derrick Man and Floor Hands***

- i. Remain in the upwind Safe Briefing Area until otherwise instructed by a supervisor.

***f. Mud Engineer***

- i. Report to the upwind Safe Briefing Area.
- ii. When instructed, begin check of mud for pH level and H<sub>2</sub>S level.

***g. Safety Personnel***

- i. Don Breathing Apparatus.
- ii. Check status of personnel.
- iii. Wait for instructions from Drilling Foreman or Tool Pusher.

**II. Taking a Kick**

- a. All Personnel report to the upwind Safe Briefing Area.
- b. Follow standard BOP procedures.

**III. Open Hole Logging**

- a. All unnecessary personnel should leave the rig floor.
- b. Drilling Foreman and Safety Personnel should monitor the conditions and make necessary safety equipment recommendations.

**IV. Running Casing or Plugging**

- a. Follow "Drilling or Tripping" procedures.
- b. Assure that all personnel have access to protective equipment.

## **SIMULATED BLOWOUT CONTROL DRILLS**

All drills will be initiated by activating alarm devices (air horn). One long blast, on the air horn, for ACTUAL and SIMULATED Blowout Control Drills. This operation will be performed by the Drilling Foreman or Tool Pusher at least one time per week for each of the following conditions, with each crew:

- |          |                     |
|----------|---------------------|
| Drill #1 | Bottom Drilling     |
| Drill #2 | Tripping Drill Pipe |

In each of these drills, the initial reaction time to shutting in the well shall be timed as well as the total time for the crew to complete its entire pit drill assignment. The times must be recorded on the IADC Driller's Log as "Blowout Control Drill".

Drill No.:  
Reaction Time to Shut-In:        minutes,                      seconds.  
Total Time to Complete Assignment:                      minutes,                      seconds.

### **I. Drill Overviews**

- a. Drill No. 1 – Bottom Drilling
  - i. Sound the alarm immediately.
  - ii. Stop the rotary and hoist Kelly joint above the rotary table.
  - iii. Stop the circulatory pump.
  - iv. Close the drill pipe rams.
  - v. Record casing and drill pipe shut-in pressures and pit volume increases.
- b. Drill No. 2 – Tripping Drill Pipe
  - i. Sound the alarm immediately.
  - ii. Position the upper tool joint just above the rotary table and set the slips.
  - iii. Install a full opening valve or inside blowout preventer tool in order to close the drill pipe.
  - iv. Close the drill pipe rams.
  - v. Record the shut-in annular pressure.

### **II. Crew Assignments**

a. Drill No. 1 – Bottom Drilling

i. *Driller*

1. Stop the rotary and hoist Kelly joint above the rotary table.
2. Stop the circulatory pump.
3. Check Flow.
4. If flowing, sound the alarm immediately
5. Record the shut-in drill pipe pressure
6. Determine the mud weight increase needed or other courses of action.

ii. *Derrickman*

1. Open choke line valve at BOP.
2. Signal Floor Man #1 at accumulator that choke line is open.
3. Close choke and upstream valve after pipe tam have been closed.
4. Read the shut-in annular pressure and report readings to Driller.

iii. *Floor Man #1*

1. Close the pipe rams after receiving the signal from the Derrickman.
2. Report to Driller for further instructions.

iv. *Floor Man #2*

1. Notify the Tool Pusher and Operator representative of the H<sub>2</sub>S alarms.
2. Check for open fires and, if safe to do so, extinguish them.
3. Stop all welding operations.
4. Turn-off all non-explosions proof lights and instruments.
5. Report to Driller for further instructions.

v. *Tool Pusher*

1. Report to the rig floor.
2. Have a meeting with all crews.

3. Compile and summarize all information.
4. Calculate the proper kill weight.
5. Ensure that proper well procedures are put into action.

*vi. Operator Representative*

1. Notify the Drilling Superintendent.
2. Determine if an emergency exists and if so, activate the contingency plan.

b. Drill No. 2 – Tripping Pipe

i. Driller

1. Sound the alarm immediately when mud volume increase has been detected.
2. Position the upper tool joint just above the rotary table and set slips.
3. Install a full opening valve or inside blowout preventer tool to close the drill pipe.
4. Check flow.
5. Record all data reported by the crew.
6. Determine the course of action.

ii. Derrickman

1. Come down out of derrick.
2. Notify Tool Pusher and Operator Representative.
3. Check for open fires and, if safe to do so , extinguish them.
4. Stop all welding operations.
5. Report to Driller for further instructions.

iii. Floor Man #1

1. Pick up full opening valve or inside blowout preventer tool and stab into tool joint above rotary table (with Floor Man #2).
2. Tighten valve with back-up tongs.



3. Close pipe rams after signal from Floor Man #2.
4. Read accumulator pressure and check for possible high pressure fluid leaks in valves or piping.
5. Report to Driller for further instructions.

iv. Floor Man #2

1. Pick-up full opening valve or inside blowout preventer tool and stab into tool joint above rotary table (with Floor Man #1).
2. Position back-up tongs on drill pipe.
3. Open choke line valve at BOP.
4. Signal Floor Man #1 at accumulator that choke line is open.
5. Close choke and upstream valve after pipe rams have been closed.
6. Check for leaks on BOP stack and choke manifold.
7. Read annular pressure.
8. Report readings to the Driller.

v. Tool Pusher

1. Report to the rig floor.
2. Have a meeting with all of the crews.
3. Compile and summarize all information.
4. See that proper well kill procedures are put into action.

vi. Operator Representative

1. Notify Drilling Superintendent
2. Determine if an emergency exists, and if so, activate the contingency plan.

## IGNITION PROCEDURES

### Responsibility:

The decision to ignite the well is the responsibility of the DRILLING FOREMAN in concurrence with the STATE POLICE. In the event the Drilling Foreman is incapacitated, it becomes the responsibility of the RIG TOOL PUSHER. This decision should be made only as a last resort and in a situation where it is clear that:

1. Human life and property are endangered.
2. There is no hope of controlling the blowout under the prevailing conditions.

If time permits, notify the main office, but do not delay if human life is in danger. Initiate the first phase of the evacuation plan.

### Instructions for Igniting the Well:

1. Two people are required for the actual igniting operation. Both men must wear self-contained breathing apparatus and must use a full body harness and attach a retrievable safety line to the D-Ring in the back. One man must monitor the atmosphere for explosive gases with the LEL monitor, while the Drilling Foreman is responsible for igniting the well.
2. The primary method to ignite is a 25mm flare gun with a range of approximately 500 feet.
3. Ignite from upwind and do not approach any closer than is warranted.
4. Select the ignition site best suited for protection and which offers an easy escape route.
5. Before igniting, check for the presence of combustible gases.
6. After igniting, continue emergency actions and procedures as before.
7. All unassigned personnel will limit their actions to those directed by the Drilling Foreman.

Note: After the well is ignited, burning Hydrogen Sulfide will convert to Sulfur Dioxide, which is also highly toxic. Do not assume the area is safe after the well is ignited.

## **TRAINING PROGRAM**

When working in an area where Hydrogen Sulfide (H<sub>2</sub>S) might be encountered, definite training requirements must be carried out. The Company Supervisor will ensure that all personnel, at the well site, have had adequate training in the following:

1. Hazards and characteristics of Hydrogen Sulfide.
2. Physicals effects of Hydrogen Sulfide on the human body.
3. Toxicity of Hydrogen Sulfide and Sulfur Dioxide.
4. H<sub>2</sub>S detection, Emergency alarm and sensor location.
5. Emergency rescue.
6. Resuscitators.
7. First aid and artificial resuscitation.
8. The effects of Hydrogen Sulfide on metals.
9. Location safety.

Service company personnel and visiting personnel must be notified if the zone contains H<sub>2</sub>S, and each service company must provide adequate training and equipment for their employees before they arrive at the well site.

## **EMERGENCY EQUIPMENT REQUIREMENTS**

### **Lease Entrance Sign:**

Should be located at the lease entrance with the following information:

CAUTION – POTENTIAL POISON GAS  
HYDROGEN SULFIDE  
NO ADMITTANCE WITHOUT AUTHORIZATION

### **Respiratory Equipment:**

- Fresh air breathing equipment should be placed at the safe briefing areas and should include the following:
- Two SCBA's at each briefing area.
- Enough air line units to operate safely, anytime the H<sub>2</sub>S concentration reaches the IDLH level (100 ppm).
- Cascade system with enough breathing air hose and manifolds to reach the rig floor, the derrickman and the other operation areas.

### **Windssocks or Wind Streamers:**

- A minimum of two 10" windssocks located at strategic locations so that they may be seen from any point on location.
- Wind streamers (if preferred) should be placed at various locations on the well site to ensure wind consciousness at all times. (Corners of location).

### **Hydrogen Sulfide Detector and Alarms:**

- 1 - Four channel H<sub>2</sub>S monitor with alarms.
- Four (4) sensors located as follows: #1 – Rig Floor, #2 – Bell Nipple, #3 – Shale Shaker, #4 – Mud Pits.
- Gastec or Draeger pump with tubes.
- Sensor test gas.

**Well Condition Sign and Flags:**

The Well Condition Sign w/flags should be placed a minimum of 150' before you enter the location. It should have three (3) color coded flags (green, yellow and red) that will be used to denote the following location conditions:

GREEN – Normal Operating Conditions

YELLOW – Potential Danger

RED – Danger, H<sub>2</sub>S Gas Present

**Auxiliary Rescue Equipment:**

- Stretcher
- 2 – 100' Rescue lines.
- First Aid Kit properly stocked.

**Mud Inspection Equipment:**

Garret Gas Train or Hach Tester for inspection of Hydrogen Sulfide in the drilling mud system.

**Fire Extinguishers:**

Adequate fire extinguishers shall be located at strategic locations.

**Blowout Preventer:**

- The well shall have hydraulic BOP equipment for the anticipated BHP.
- The BOP should be tested upon installation.
- BOP, Choke Line and Kill Line will be tested as specified by Operator.

**Confined Space Monitor:**

There should be a portable multi-gas monitor with at least 3 sensors (O<sub>2</sub>, LEL H<sub>2</sub>S). This instrument should be used to test the atmosphere of any confined space before entering. It should also be used for atmospheric testing for LEL gas before beginning any type of Hot Work. Proper calibration documentation will need to be provided.

**Communication Equipment:**

- Proper communication equipment such as cell phones or 2-way radios should be available at the rig.
- Radio communication shall be available for communication between the company man's trailer, rig floor and the tool pusher's trailer.

- Communication equipment shall be available on the vehicles.

**Special Control Equipment:**

- Hydraulic BOP equipment with remote control on the ground.
- Rotating head at the surface casing point.

**Evacuation Plan:**

- Evacuation routes should be established prior to spudding the well.
- Should be discussed with all rig personnel.

**Designated Areas:**

***Parking and Visitor area:***

- All vehicles are to be parked at a pre-determined safe distance from the wellhead.
- Designated smoking area.

**Safe Briefing Areas:**

- Two Safe Briefing Areas shall be designated on either side of the location at the maximum allowable distance from the well bore so they offset prevailing winds or they are at a 180 degree angle if wind directions tend to shift in the area.
- Personal protective equipment should be stored at both briefing areas or if a moveable cascade trailer is used, it should be kept upwind of existing winds. When wind is from the prevailing direction, both briefing areas should be accessible.

***Note:***

- Additional equipment will be available at the Safety Solutions, LLC office.
- Additional personal H<sub>2</sub>S monitors are available for all employees on location.
- Automatic Flare Igniters are recommended for installation on the rig.

## CHECK LISTS

### Status Check List

Note: Date each item as they are implemented.

1. Sign at location entrance. \_\_\_\_\_
2. Two (2) wind socks (in required locations). \_\_\_\_\_
3. Wind Streamers (if required). \_\_\_\_\_
4. SCBA's on location for all rig personnel and mud loggers. \_\_\_\_\_
5. Air packs, inspected and ready for use. \_\_\_\_\_
6. Spare bottles for each air pack (if required). \_\_\_\_\_
7. Cascade system for refilling air bottles. \_\_\_\_\_
8. Cascade system and hose line hook up. \_\_\_\_\_
9. Choke manifold hooked-up and tested.  
(before drilling out surface casing.) \_\_\_\_\_
10. Remote Hydraulic BOP control (hooked-up and tested before  
drilling out surface casing). \_\_\_\_\_
11. BOP tested (before drilling out surface casing). \_\_\_\_\_
12. Mud engineer on location with equipment to test mud for H<sub>2</sub>S. \_\_\_\_\_
13. Safe Briefing Areas set-up \_\_\_\_\_
14. Well Condition sign and flags on location and ready. \_\_\_\_\_
15. Hydrogen Sulfide detection system hooked -up & tested. \_\_\_\_\_
16. Hydrogen Sulfide alarm system hooked-up & tested. \_\_\_\_\_
17. Stretcher on location at Safe Briefing Area. \_\_\_\_\_
18. 2 – 100' Life Lines on location. \_\_\_\_\_
19. 1 – 20# Fire Extinguisher in safety trailer. \_\_\_\_\_
20. Confined Space Monitor on location and tested. \_\_\_\_\_
21. All rig crews and supervisor trained (as required). \_\_\_\_\_



22. Access restricted for unauthorized personnel.

---

23. Drills on H<sub>2</sub>S and well control procedures.

---

24. All outside service contractors advised of potential H<sub>2</sub>S on the well.

---

25. NO SMOKING sign posted.

---

26. H<sub>2</sub>S Detector Pump w/tubes on location.

---

27. 25mm Flare Gun on location w/flares.

---

28. Automatic Flare Igniter installed on rig.

---

## **Procedural Check List**

Perform the following on each tour:

1. Check fire extinguishers to see that they have the proper charge.
2. Check breathing equipment to insure that they have not been tampered with.
3. Check pressure on the supply air bottles to make sure they are capable of recharging.
4. Make sure all of the Hydrogen Sulfide detection systems are operative.

Perform the following each week:

1. Check each piece of breathing equipment to make sure that they are fully charged and operational. This requires that the air cylinder be opened and the mask assembly be put on and tested to make sure that the regulators and masks are properly working. Negative and Positive pressure should be conducted on all masks.
2. BOP skills.
3. Check supply pressure on BOP accumulator stand-by source.
4. Check all breathing air mask assemblies to see that straps are loosened and turned back, ready for use.
5. Check pressure on cascade air cylinders to make sure they are fully charged and ready to use for refill purposes if necessary.
6. Check all cascade system regulators to make sure they work properly.
7. Perform breathing drills with on-site personnel.
8. Check the following supplies for availability:
  - Stretcher
  - Safety Belts and Ropes
  - Spare air Bottles
  - Spare Oxygen Bottles (if resuscitator required)
  - Gas Detector Pump and Tubes
  - Emergency telephone lists
9. Test the Confined Space Monitor to verify the batteries are good

## BRIEFING PROCEDURES

The following scheduled briefings will be held to ensure the effective drilling and operation of this project:

### Pre-Spud Meeting

Date: Prior to spudding the well.

Attendance:   Drilling Supervisor  
                  Drilling Engineer  
                  Drilling Foreman  
                  Rig Tool Pushers  
                  Rig Drillers  
                  Mud Engineer  
                  All Safety Personnel  
                  Key Service Company Personnel

Purpose:       Review and discuss the well program, step-by-step, to insure complete understanding of assignments and responsibilities.

## **EVACUATION PLAN**

### **General Plan**

The direct lines of action prepared by SAFETY SOLUTIONS, LLC to protect the public from hazardous gas situations are as follows:

1. When the company approved supervisor (Drilling Foreman, Tool Pusher or Driller) determine that Hydrogen Sulfide gas cannot be limited to the well location, and the public will be involved, he will activate the evacuation plan. Escape routes are noted on the area map.
2. Company safety personnel or designee will notify the appropriate local government agency that a hazardous condition exists and evacuation needs to be implemented.
3. Company approved safety personnel that have been trained in the use of the proper emergency equipment will be utilized.
4. Law enforcement personnel (State Police, Local Police Department, Fire Department, and the Sheriff's Department) will be called to aid in setting up and maintaining road blocks. Also, they will aid in evacuation of the public if necessary.

NOTE: Law enforcement personnel will not be asked to come into a contaminated area. Their assistance will be limited to uncontaminated areas. Constant radio contact will be maintained with them.

5. After the discharge of gas has been controlled, "Company" safety personnel will determine when the area is safe for re-entry.

### **See Emergency Action Plan**

## Emergency Assistance Telephone List

### **PUBLIC SAFETY:** **911 or**

Eddy County Sheriff's Department	(575) 887-7551
Kent Waller	
Fire Department:	
Carlsbad	(575) 885-3125
Artesia	(575) 746-5050
Hospitals:	
Carlsbad	(575) 887-4121
Artesia	(575) 748-3333
Hobbs	(575) 392-1979
Dept. of Public Safety/Carlsbad	(575) 748-9718
Highway Department	(575) 885-3281
New Mexico Oil Conservation	(575) 476-3440
U.S. Dept. of Labor	(575) 887-1174

### **EOG Resources, Inc.**

EOG / Midland	Office (432) 686-3600
---------------	-----------------------

#### **Company Drilling Consultants:**

Danny Kiser	Cell (281) 833-2749
-------------	---------------------

#### **Drilling Engineer**

Steve Munsell	Office (432) 686-3609
	Cell (432) 894-1256

#### **Operations Manager**

Joel Pettit	Office (432) 686-3705
	Cell (432) 894-1226

#### **Drilling Superintendent**

Barney Thompson	Office (432) 686-3678
	Cell (432) 254-9056

#### **Field Drilling Superintendent**

Ron Welch	Cell (432) 386-0592
-----------	---------------------

#### **McVay Drilling**

McVay Drilling / Hobbs	Office (575) 397-3311
McVay Drilling Rig #4	Rig (575) 370-5598

#### **Tool Pusher:**

Terry Johnson	Cell (575) 370-5620
---------------	---------------------

#### **Safety Consultants**

Safety Solutions, LLC	Office (432) 686-8555
Cliff Strasner	Cell (432) 894-9789
Craig Strasner	Cell (432) 894-0341

**MAPS AND PLATS**  
**(Maps & Plats Attached)**

### **Affected Notification List**

(within a 65' radius of exposure @100ppm)

The geologic zones that will be encountered during drilling are known to contain hazardous quantities of H<sub>2</sub>S. The accompanying map illustrates the affected areas of the community. The residents within this radius will be notified via a hand delivered written notice describing the activities, potential hazards, conditions of evacuation, evacuation drill siren alarms and other precautionary measures.

#### **Evacuee Description:**

Residents: **THERE ARE NO RESIDENTS WITHIN 3000' ROE.**

#### **Notification Process:**

A continuous siren audible to all residence will be activated, signaling evacuation of previously notified and informed residents.

#### **Evacuation Plan:**

All evacuees will migrate lateral to the wind direction.

The Oil Company will identify all home bound or highly susceptible individuals and make special evacuation preparations, interfacing with the local and emergency medical service as necessary.

## **GENERAL INFORMATION**



## Toxic Effects of H<sub>2</sub>S Poisoning

Hydrogen Sulfide is extremely toxic. The acceptable ceiling concentration for eight-hour exposure is 10 PPM, which is .001% by volume. Hydrogen Sulfide is heavier than air (specific gravity – 1.192) and is colorless and transparent. Hydrogen Sulfide is almost as toxic as Hydrogen Cyanide and is 5-6 times more toxic than Carbon Monoxide. Occupational exposure limits for Hydrogen Sulfide and other gases are compared below in Table 1. Toxicity table for H<sub>2</sub>S and physical effects are shown in Table 2.

Table 1  
Permissible Exposure Limits of Various Gases

Common Name	Symbol	Sp. Gravity	TLV	STEL	IDLH
Hydrogen Cyanide	HCN	.94	4.7 ppm	C	
Hydrogen Sulfide	H <sub>2</sub> S	1.192	10 ppm	15 ppm	100 ppm
Sulfide Dioxide	SO <sub>2</sub>	2.21	2 ppm	5 ppm	
Chlorine	CL	2.45	.5 ppm	1 ppm	
Carbon Monoxide	CO	.97	25 ppm	200 ppm	
Carbon Dioxide	CO <sub>2</sub>	1.52	5000 ppm	30,000 ppm	
Methane	CH <sub>4</sub>	.55	4.7% LEL	14% UEL	

## Definitions

- A. TLV – Threshold Limit Value is the concentration employees may be exposed based on a TWA (time weighted average) for eight (8) hours in one day for 40 hours in one (1) week. This is set by ACGIH (American Conference of Governmental Hygienists) and regulated by OSHA.
- B. STEL – Short Term Exposure Limit is the 15 minute average concentration an employee may be exposed to providing that the highest exposure never exceeds the OEL (Occupational Exposure Limit). The OEL for H<sub>2</sub>S is 19 PPM.
- C. IDLH – Immediately Dangerous to Life and Health is the concentration that has been determined by the ACGIH to cause serious health problems or death if exposed to this level. The IDLH for H<sub>2</sub>S is 100 PPM.
- D. TWA – Time Weighted Average is the average concentration of any chemical or gas for an eight (8) hour period. This is the concentration that any employee may be exposed based on an TWA.

**TABLE 2**Toxicity Table of H<sub>2</sub>S

Percent %	PPM	Physical Effects
.0001	1	Can smell less than 1 ppm.
.001	10	TLV for 8 hours of exposure.
.0015	15	STEL for 15 minutes of exposure.
.01	100	Immediately Dangerous to Life & Health. Kills sense of smell in 3 to 5 minutes.
.02	200	Kills sense of smell quickly, may burn eyes and throat.
.05	500	Dizziness, cessation of breathing begins <b>in a few minutes</b> .
.07	700	Unconscious quickly, death will result if not rescued promptly.
.10	1000	Death will result unless rescued promptly. Artificial resuscitation may be necessary.

## PHYSICAL PROPERTIES OF H<sub>2</sub>S

The properties of all gases are usually described in the context of seven major categories:

COLOR  
ODOR  
VAPOR DENSITY  
EXPLOSIVE LIMITS  
FLAMMABILITY  
SOLUBILITY (IN WATER)  
BOILING POINT

Hydrogen Sulfide is no exception. Information from these categories should be considered in order to provide a fairly complete picture of the properties of the gas.

### ***COLOR – TRANSPARENT***

Hydrogen Sulfide is colorless so it is invisible. This fact simply means that you can't rely on your eyes to detect its presence. In fact that makes this gas extremely dangerous to be around.

### ***ODOR – ROTTEN EGGS***

Hydrogen Sulfide has a distinctive offensive smell, similar to "rotten eggs". For this reason it earned its common name "sour gas". However, H<sub>2</sub>S, even in low concentrations, is so toxic that it attacks and quickly impairs a victim's sense of smell, so it could be fatal to rely on your nose as a detection device.

### ***VAPOR DENSITY – SPECIFIC GRAVITY OF 1.192***

Hydrogen Sulfide is heavier than air so it tends to settle in low-lying areas like pits, cellars or tanks. If you find yourself in a location where H<sub>2</sub>S is known to exist, protect yourself. Whenever possible, work in an area upwind and keep to higher ground.

### ***EXPLOSIVE LIMITS – 4.3% TO 46%***

Mixed with the right proportion of air or oxygen, H<sub>2</sub>S will ignite and burn or explode, producing another alarming element of danger besides poisoning.

### ***FLAMMABILITY***

Hydrogen Sulfide will burn readily with a distinctive clear blue flame, producing Sulfur Dioxide (SO<sub>2</sub>), another hazardous gas that irritates the eyes and lungs.

### ***SOLUBILITY – 4 TO 1 RATIO WITH WATER***

Hydrogen Sulfide can be dissolved in liquids, which means that it can be present in any container or vessel used to carry or hold well fluids including oil, water, emulsion and sludge. The solubility of H<sub>2</sub>S is dependent on temperature and pressure, but if conditions are right, simply agitating a fluid containing H<sub>2</sub>S may release the gas into the air.

### ***BOILING POINT – (-76 degrees Fahrenheit)***

Liquefied Hydrogen Sulfide boils at a very low temperature, so it is usually found as a gas.

## RESPIRATOR USE

The Occupational Safety and Health Administration (OSHA) regulate the use of respiratory protection to protect the health of employees. OSHA's requirements are written in the Code of Federal Regulations, Title 29, Part 1910, Section 134, Respiratory Protection. This regulation requires that all employees who might be required to wear respirators, shall complete a OSHA mandated medical evaluation questionnaire. The employee then should be fit tested prior to wearing any respirator while being exposed to hazardous gases.

Written procedures shall be prepared covering safe use of respirators in dangerous atmospheric situations, which might be encountered in normal operations or in emergencies. Personnel shall be familiar with these procedures and the available respirators.

Respirators shall be inspected prior to and after each use to make sure that the respirator has been properly cleaned, disinfected and that the respirator works properly. The unit should be fully charged prior to being used.

Anyone who may use respirators shall be properly trained in how to properly seal the face piece. They shall wear respirators in normal air and then in a test atmosphere. (Note: Such items as facial hair (beard or sideburns) and eyeglass temple pieces will not allow a proper seal.) Anyone that may be expected to wear respirators should have these items removed before entering a toxic atmosphere. A special mask must be obtained for anyone who must wear eyeglasses. Contact lenses should not be allowed.

Respirators shall be worn during the following conditions:

- A. Any employee who works near the top or on the top of any tank unless tests reveal less than 20 ppm of H<sub>2</sub>S.
- B. When breaking out any line where H<sub>2</sub>S can reasonably be expected.
- C. When sampling air in areas where H<sub>2</sub>S may be present.
- D. When working in areas where the concentration of H<sub>2</sub>S exceeds the Threshold Limit Value for H<sub>2</sub>S (10 ppm).
- E. At any time where there is a doubt as to the H<sub>2</sub>S level in the area to be entered.

## EMERGENCY RESCUE PROCEDURES

***DO NOT PANIC!!!***

**Remain Calm – Think**

1. Before attempting any rescue you must first get out of the hazardous area yourself. Go to a safe briefing area.
2. Sound alarm and activate the 911 system.
3. Put on breathing apparatus. At least two persons should do this, when available use the buddy system.
4. Rescue the victim and return them to a safe briefing area.
5. Perform an initial assessment and begin proper First Aid/CPR procedures.
6. Keep victim lying down with a blanket or coat, etc., under the shoulders to keep airway open. Conserve body heat and do not leave unattended.
7. If the eyes are affected by H<sub>2</sub>S, wash them thoroughly with potable water. For slight irritation, cold compresses are helpful.
8. In case a person has only minor exposure and does not lose consciousness totally, it's best if he doesn't return to work until the following day.
9. Any personnel overcome by H<sub>2</sub>S should always be examined by medical personnel. They should always be transported to a hospital or doctor.

## PECOS DISTRICT CONDITIONS OF APPROVAL

OPERATOR'S NAME:	EOG Resources, Inc.
LEASE NO.:	NM-14497
WELL NAME & NO.:	Diamond 8 Federal 1
SURFACE HOLE FOOTAGE:	660' FNL & 2310' FEL
BOTTOM HOLE FOOTAGE:	330' FSL & 2210' FEL
LOCATION:	Section 8, T. 25 S., R 34 E., NMPM
COUNTY:	Lea County, New Mexico

### Communitization Agreement

A Communitization Agreement covering the acreage dedicated to this well must be filed for approval with the BLM. The effective date of the agreement shall be prior to any sales. Operator to supply NMOCD order, which details the vertical and horizontal extent of pool to verify that requested communitization is within an approved and established pool. NMOCD form C-123 – pool designation request.

### I. DRILLING

#### A. DRILLING OPERATIONS REQUIREMENTS

The BLM is to be notified a minimum of 4 hours in advance for a representative to witness:

- a. Spudding well
- b. Setting and/or Cementing of all casing strings
- c. BOPE tests

☒ Lea County

Call the Hobbs Field Station, 414 West Taylor, Hobbs NM 88240,  
(575) 393-3612

1. A Hydrogen Sulfide (H<sub>2</sub>S) Drilling Plan should be activated 500 feet prior to drilling into the Bone Springs formation. As a result, the Hydrogen Sulfide area must meet Onshore Order 6 requirements, which includes equipment and personnel/public protection items. If Hydrogen Sulfide is encountered, please provide measured values and formations to the BLM.
2. Close monitoring of the lateral should be implemented to prevent hitting the wellbore of the Longway Draw Fed Com #1. Maximum distance between readings will be 50 feet within NWSE ¼-¼ (Unit J).

3. Unless the production casing has been run and cemented or the well has been properly plugged, the drilling rig shall not be removed from over the hole without prior approval.
4. Floor controls are required for 3M or Greater systems. These controls will be on the rig floor, unobstructed, readily accessible to the driller and will be operational at all times during drilling and/or completion activities. Rig floor is defined as the area immediately around the rotary table; the area immediately above the substructure on which the draw works are located, this does not include the dog house or stairway area.
5. **The record of the drilling rate along with the well logs run will be submitted to the BLM office 30 days from completion. If available, a digital copy of the logs is to be submitted in addition to the paper copies. The Rustler top and top and bottom of Salt are to be recorded on the Completion Report.**

## **B. CASING**

**Changes to the approved Sundry casing and cement program require submitting a sundry and receiving approval prior to work. Failure to obtain approval prior to work will result in an Incident of Non-Compliance being issued.**

**Formation that the lateral is drilling through is to be tested according to Onshore Order 2.III.B.1.i.**

**Test to be done as a mud equivalency test using the mud weight necessary for the pore pressure of the formation below the shoe and the mud weight for the bottom of the hole. Report results to BLM office.**

1. The minimum required fill of cement behind the 4-1/2 inch production liner is:
  - ☒ Cement to top of liner. If cement does not circulate, contact the appropriate BLM office. **Liner is to be set a minimum 200' inside intermediate casing. Additional cement may be needed – Excess cement calculates to 11%.**
2. If hardband drill pipe is rotated inside casing, returns will be monitored for metal. If metal is found in samples, drill pipe will be pulled and rubber protectors which have a larger diameter than the tool joints of the drill pipe will be installed prior to continuing drilling operations.

## **C. PRESSURE CONTROL**

1. All blowout preventer (BOP) and related equipment (BOPE) shall comply with well control requirements as described in Onshore Oil and Gas Order No. 2 and API RP 53 Sec. 17.
2. Minimum working pressure of the blowout preventer (BOP) and related equipment (BOPE) required for drilling out of the intermediate casing shall be **5000 (5M) psi. 5M system requires an HCR valve, remote kill line and annular to match. The remote kill line is to be installed prior to testing the system and tested to stack pressure.**
3. The appropriate BLM office shall be notified a minimum of 4 hours in advance for a representative to witness the tests.
  - a. The tests shall be done by an independent service company.
  - b. The results of the test shall be reported to the appropriate BLM office.
  - c. All tests are required to be recorded on a calibrated test chart. **A copy of the BOP/BOPE test chart and a copy of independent service company test will be submitted to the appropriate BLM office.**
  - d. The BOP/BOPE test shall include a low pressure test from 250 to 300 psi. The test will be held for a minimum of 10 minutes if test is done with a test plug and 30 minutes without a test plug.

#### **D. DRILL STEM TEST**

If drill stem tests are performed, Onshore Order 2.III.D shall be followed.

**DHW 123109**