

UNITED STATES  
DEPARTMENT OF THE INTERIOR  
BUREAU OF LAND MANAGEMENTFORM APPROVED  
OMB No 1004-0135  
Expires January 31, 2004**SUNDRY NOTICES AND REPORTS ON WELLS**  
Do not use this form for proposals to drill or to re-enter an abandoned well. Use Form 3160-3 (APD) for such proposals.**SUBMIT IN TRIPLICATE - Other instructions on reverse side**

## 1 Type of Well

☐ Oil Well ☒ Gas Well ☐ Other

## 2 Name of Operator

Mewbourne Oil Company 14744

## 3a Address

PO Box 5270 Hobbs, NM 88240

## 3b Phone No (include area code)

575-393-5905

## 4 Location of Well (Footage, Sec., T, R, M., or Survey Description)

950' FSL &amp; 990' FEL, Sec 14-T20S-R34E Unit P

## 5 Lease Serial No

NMNM-123523

## 6 If Indian, Allottee or Tribe Name

## 7 If Unit or CA/Agreement, Name and/or No

## 8 Well Name and No

Marathon Road 14 Fed #1

## 9 API Well No

30-025-39546

## 10 Field and Pool, or Exploratory Area

Lea, Penn Gas

## 11 County or Parish, State

Lea County, NM

## 12. CHECK APPROPRIATE BOX(ES) TO INDICATE NATURE OF NOTICE, REPORT, OR OTHER DATA

## TYPE OF SUBMISSION

## TYPE OF ACTION

☐ Notice of Intent☒ Subsequent Report☐ Final Abandonment Notice☐ Acidize☐ Alter Casing☐ Casing Repair☐ Change Plans☐ Convert to Injection☐ Deepen☐ Fracture Treat☐ New Construction☐ Plug and Abandon☐ Plug Back☐ Production (Start/Resume)☐ Reclamation☐ Recomplete☐ Temporarily Abandon☐ Water Disposal☐ Water Shut-Off☐ Well Integrity☒ Other Cmt & csg

3 Describe Proposed or Completed Operation (clearly state all pertinent details, including estimated starting date of any proposed work and approximate duration thereof. If the proposal is to deepen directionally or recompleat horizontally, give subsurface locations and measured and true vertical depths of all pertinent markers and zones. Attach the Bond under which the work will be performed or provide the Bond No. on file with BLM/BIA. Required subsequent reports shall be filed within 30 days following completion of the involved operations. If the operation results in a multiple completion or recompleat in a new interval, a Form 3160-4 shall be filed once testing has been completed. Final Abandonment Notices shall be filed only after all requirements, including reclamation, have been completed, and the operator has determined that the site is ready for final inspection.)

12/11/09 TD'ed 12 1/4" hole @ 5400'. Ran 5400' 9 5/8" 40# N80/J55 ST&C Csg. Cemented with 400 sks Lite Class C (70.30:0) with additives Mixed @ 12.8# /g w/ 1.78 yd. Tail w/400 sks Class C Neat Mixed @ 14.8 #/g w/ 1.33 yd. Plug down @ 11:45 pm 12/10/09 Drop bomb & open DV tool w/960#. Circ 175 sks to pit. WOC 18 hrs. Set wellhead slips w/165k#. Tested csg spool pack-off to 2500#. Tested BOPE to 5000# and annular to 2500#. At 2:45 pm 12/12/09, tested csg to 1500# for 30 mins, held OK. Test formation to 12.5# MWE. Charts and schematic attached. Drilled out with 8 3/4" bit

## 14 I hereby certify that the foregoing is true and correct

Name (Printed/Typed)

Jackie Lathan

Title Hobbs Regulatory

Signature

Date 12/23/09

THIS SPACE FOR FEDERAL OR STATE OFFICE USE

## Approved by (Signature)

Conditions of approval, if any, are attached. Approval of this notice does not warrant or certify that the applicant holds legal or equitable title to those rights in the subject lease which would entitle the applicant to conduct operations thereon.

Title 18 U S C Section 1001 and Title 43 U S C Section 1212, make it a crime for any person knowingly and willfully to make or cause to be made any false, fictitious or fraudulent statements or representations as to any matter within its jurisdiction

(Continued on next page)

PETROLEUM ENGINEER  
(Printed/Typed)

Office

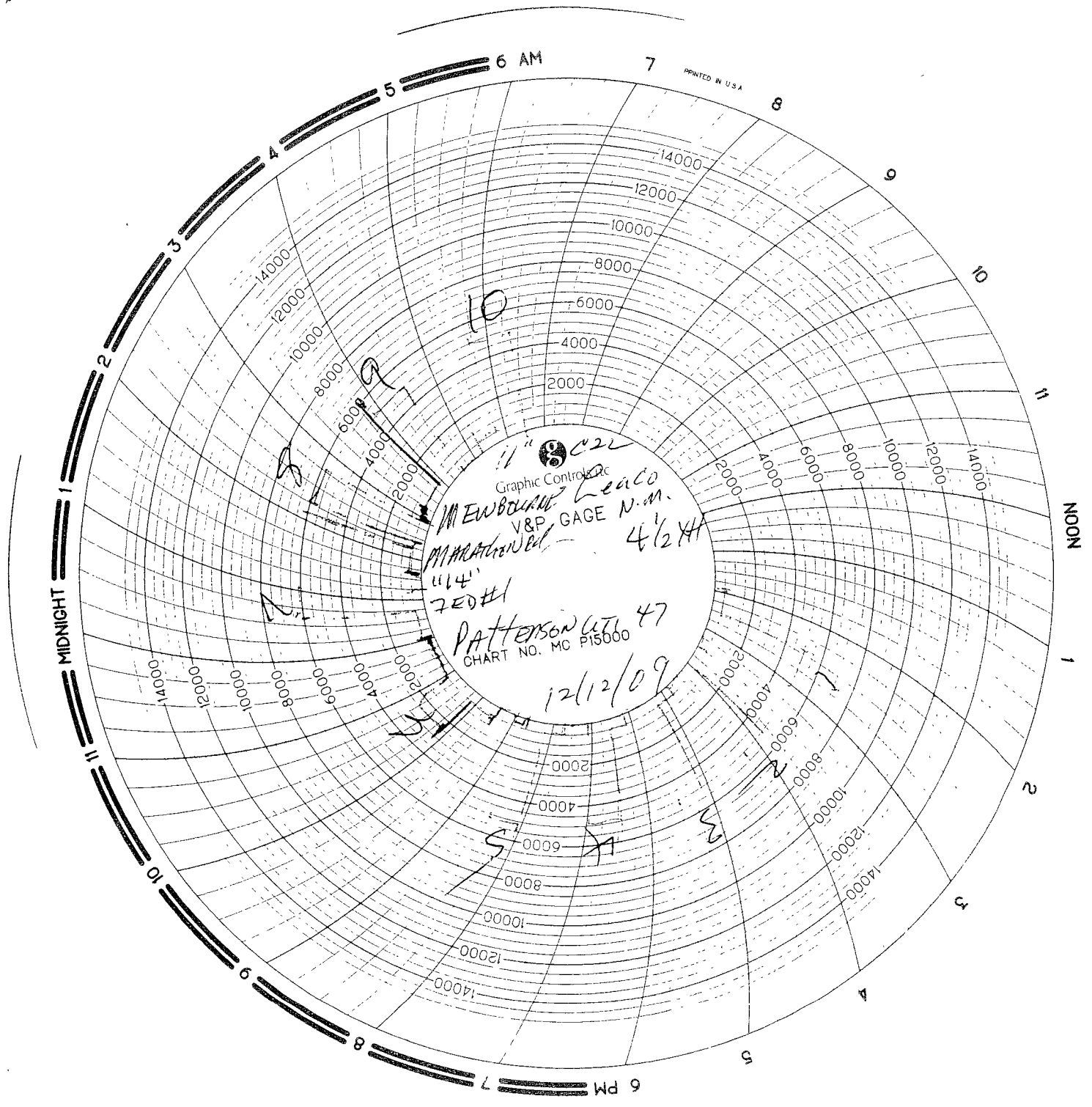
ACCEPTED FOR RECORD

Is/ Roger Hall

DEC -6 2010

Petroleum Engineer

BUREAU OF LAND MANAGEMENT  
CARLSBAD FIELD OFFICE



# MAN WELDING SERVICES, INC

Company ALLEN BURKE Date 12/12/07  
Lease Albuquerque Road "14" Fed #1 County LEA CO NM  
Drilling Contractor PATTERSON, UTL 47 Plug & Drill Pipe Size 11" O.D. 4 1/2" I.D.

## Accumulator Function Test - OO&GO#2

### To Check - USABLE FLUID IN THE NITROGEN BOTTLES (III.A.2.c.i. or ii or iii)

- Make sure all rams and annular are open and if applicable HCR is closed.
- Ensure accumulator is pumped up to working pressure! **(Shut off all pumps)**  
 $8' \text{ fluid } \times 10 = 80 \text{ gal}$   
 $14' \times 36' \times 168 = 365 \text{ gal} / 36' = 10 \text{ gal per } 1'$   
 $2 - 80 \text{ gal Bottles} = 80 \text{ gal}$   
 $+ 80 = 160 \text{ gal usable fluid}$
- 1. Open HCR Valve. (If applicable)
- 2. Close annular.
- 3. Close **all** pipe rams.
- 4. Open one set of the pipe rams to simulate closing the blind ram.
- 5. For 3 ram stacks, open the annular to achieve the 50+ % safety factor. (5M and greater systems).
- 6. **Record remaining pressure 1600 psi. Test Fails if pressure is lower than required.**
- a. {950 psi for a 1500 psi system} b. {1200 psi for a 2000 & 3000 psi system}
- 7. If annular is closed, open it at this time and close HCR.

### To Check - PRECHARGE ON BOTTLES OR SPHERICAL (III.A.2.d.)

- Start with manifold pressure at, or above, maximum acceptable pre-charge pressure: **1100 psi**  
a. {800 psi for a 1500 psi system} b. {1100 psi for 2000 and 3000 psi system}  
 $1100 - 800 = 300 \text{ psi}$   
 $300 \times 2 = 600 \text{ psi}$   
 $600 + 500 = 1100 \text{ psi}$
- 1. Open bleed line to the tank, slowly. (gauge needle will drop at the lowest bottle pressure)
- 2. Close bleed line. Barely bump electric pump and see what pressure the needle jumps up to.
- 3. **Record pressure drop 950 psi. Test fails if pressure drops below minimum.**
- **Minimum:** a. {700 psi for a 1500 psi system} b. {900 psi for a 2000 & 3000 psi system}

### To Check - THE CAPACITY OF THE ACCUMULATOR PUMPS (III.A.2.f.)

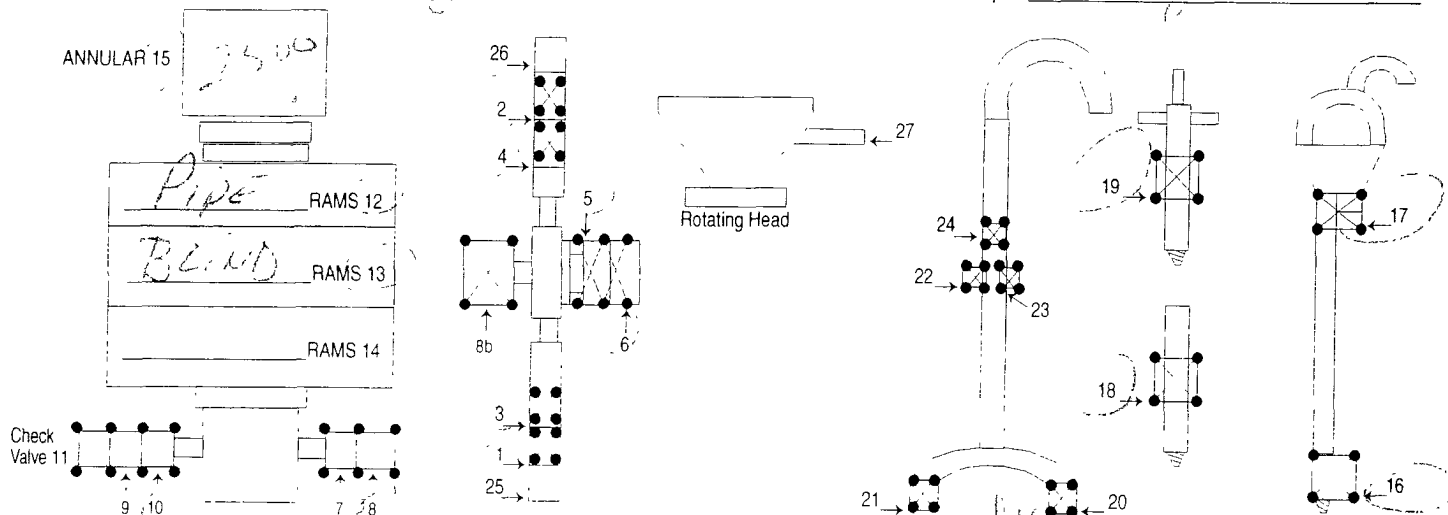
- Isolate the accumulator bottles or spherical from the pumps & manifold.
- Open the bleed off valve to the tank, {manifold psi should go to 0 psi} close bleed valve.
- 1. Open the HCR valve, {if applicable}
- 2. Close annular
- 3. With **pumps** only, time how long it takes to regain the required manifold pressure.
- 4. **Record elapsed time 1:45. Test fails if it takes over 2 minutes.**
- a. {950 psi for a 1500 psi system} b. {1200 psi for a 2000 & 3000 psi system}



# INVOICE

20 10 55 6

Company M. E. McLaughlin Date 12/12/08 Start Time 12:00 ☐ am ☒ pm  
Lease ITATAH BOW RD. "14" 2nd & 1 County CON State ALA  
Company Man Paul W.  
Wellhead Vendor \_\_\_\_\_ Tester K. Kirkpatrick  
Drig. Contractor PA-HOPSON Rig # 47  
Tool Pusher George  
Plug Type C-22 Plug Size 11 Drill Pipe Size 4.5 API  
Casing Valve Opened 12:20 Check Valve Open 12:20

[illegible]

HR@ 1000  
HR@ 22  
Mileage 78 @

MASTER PRINTERS 575 396,3661

SUB TOTAL 12.00  
TAX 0.00  
TOTAL 12.00