

RECEIVED

JAN 05 2010

DISTRICT I

1625 N. FRENCH DR., HOBBS, NM 88240

DISTRICT II

1301 W GRAND AVENUE, ARTESIA, NM 88210

DISTRICT III

1000 Rio Brazos Rd., Aztec, NM 87410

DISTRICT IV

1220 S ST FRANCIS DR., SANTA FE, NM 87505

State of New Mexico
Energy, Minerals and Natural Resources Department

OIL CONSERVATION DIVISION
1220 SOUTH ST. FRANCIS DR.
Santa Fe, New Mexico 87505

Form C-102

Revised October 12, 2005

Submit to Appropriate District Office

State LEase - 4 Copies

Fee LEase - 3 Copies

WELL LOCATION AND ACREAGE DEDICATION PLAT

☐ AMENDED REPORT

API Number 30-025-39108	Pool Code 44500	Pool Name MALJAMAR; YESO
Property Code 302519	Property Name MC FEDERAL	Well Number 37
OGRID No. 229137	Operator Name COG OPERATING, LLC	Elevation 4018'

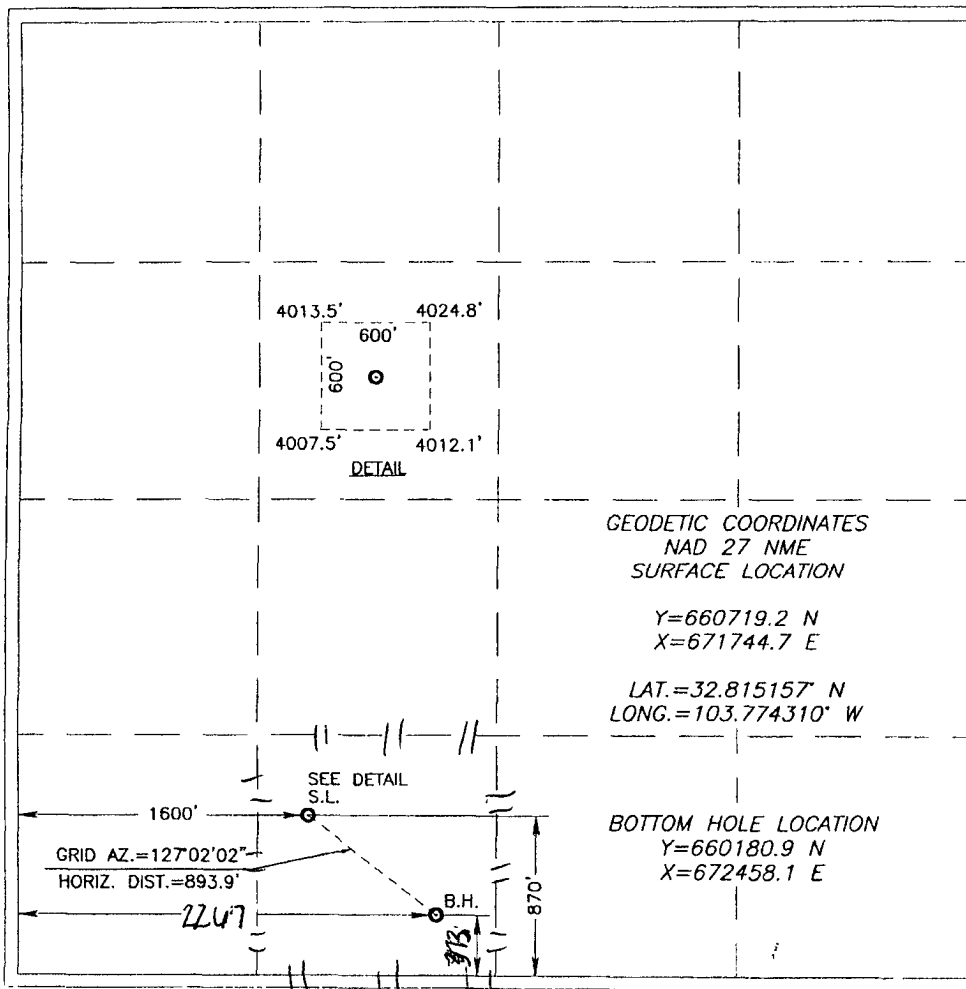
Surface Location

UL or lot No.	Section	Township	Range	Lot Idn	Feet from the	North/South line	Feet from the	East/West line	County
N	21	17-S	32-E		870	SOUTH	1600	WEST	LEA

Bottom Hole Location If Different From Surface

UL or lot No.	Section	Township	Range	Lot Idn	Feet from the	North/South line	Feet from the	East/West line	County
N	21	17-S	32-E		373	SOUTH	2247	WEST	LEA
Dedicated Acres 40	Joint or Infill	Consolidation Code	Order No.	371	2220				

NO ALLOWABLE WILL BE ASSIGNED TO THIS COMPLETION UNTIL ALL INTERESTS HAVE BEEN CONSOLIDATED
OR A NON-STANDARD UNIT HAS BEEN APPROVED BY THE DIVISION



OPERATOR CERTIFICATION

I hereby certify that the information herein is true and complete to the best of my knowledge and belief, and that this organization either owns a working interest or unleased mineral interest in the land including the proposed bottom hole location or has a right to drill this well at this location pursuant to a contract with an owner of such mineral or working interest, or to a voluntary pooling agreement or a compulsory pooling order heretofore entered by the division.

Signature: C. Jackson Date: 12/09/09
Printed Name: Chasity Jackson

SURVEYOR CERTIFICATION

I hereby certify that the well location shown on this plat was plotted from field notes of actual surveys made by me or under my supervision, and that the same is true and correct to the best of my belief.

Date Surveyed: 12/09/08 DSS
Signature of Professional Surveyor: Ronald J. Eidson
Certificate No.: 12641
RONALD J. EIDSON 3239