

DISTRICT I  
1625 N. FRENCH DR., HOBBS, NM 88240

RECEIVED

State of New Mexico  
Energy, Minerals and Natural Resources Department

Form C-102

Revised October 12, 2005

Submit to Appropriate District Office

State Lease - 4 Copies

Fee Lease - 3 Copies

DISTRICT II  
1301 W. GRAND AVENUE, ARTESIA, NM 88210

JAN 14 2010  
HOBBSDO

OIL CONSERVATION DIVISION

11885 SOUTH ST. FRANCIS DR.  
Santa Fe, New Mexico 87505

DISTRICT III  
1000 RIO BRAZOS RD., AZTEC, NM 87410

DISTRICT IV  
11885 S. ST. FRANCIS DR., SANTA FE, NM 87505

WELL LOCATION AND ACREAGE DEDICATION PLAT

☐ AMENDED REPORT

API Number	Pool Code	Pool Name
30-025-39490	33230	House; Blinebry
Property Code	Property Name	Well Number
303107	TW ARNOLD	2
OGRID No.	Operator Name	Elevation
873	APACHE CORPORATION	3583'

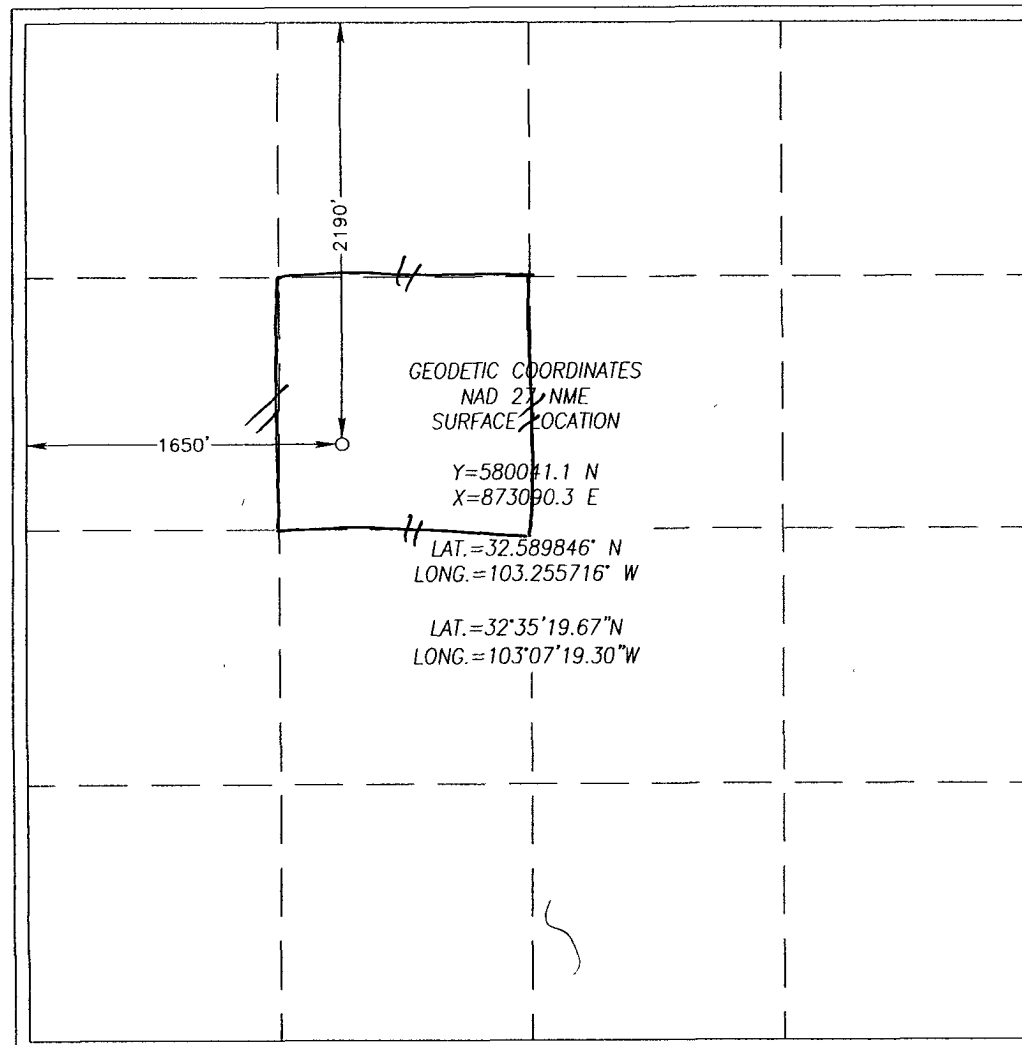
Surface Location

UL or lot No.	Section	Township	Range	Lot Idn	Feet from the	North/South line	Feet from the	East/West line	County
F	11	20-S	38-E		2190	NORTH	1650	WEST	LEA

Bottom Hole Location If Different From Surface

UL or lot No.	Section	Township	Range	Lot Idn	Feet from the	North/South line	Feet from the	East/West line	County
Dedicated Acres	Joint or Infill	Consolidation Code	Order No.						
40									

NO ALLOWABLE WILL BE ASSIGNED TO THIS COMPLETION UNTIL ALL INTERESTS HAVE BEEN CONSOLIDATED  
OR A NON-STANDARD UNIT HAS BEEN APPROVED BY THE DIVISION



OPERATOR CERTIFICATION

I hereby certify that the information herein is true and complete to the best of my knowledge and belief, and that this organization either owns a working interest or unleased mineral interest in the land including the proposed bottom hole location or has a right to drill this well at this location pursuant to a contract with an owner of such mineral or working interest, or to a voluntary pooling agreement or a compulsory pooling order heretofore entered by the division.

*Amber Cooke* 1/12/10  
Signature Date

Amber Cooke  
Printed Name

SURVEYOR CERTIFICATION

I hereby certify that the well location shown on this plat was plotted from field notes of actual surveys made by me or under my supervision, and that the same is true and correct to the best of my belief.

*Ronald J. Eidson* 8-05-09  
Date Surveyed Signature & Seal of Professional Surveyor

Certificate No. GARY G. EIDSON 12641  
RONALD J. EIDSON 3239