

DISTRICT I  
1625 N. French Dr., Hobbs, NM 88240

State of New Mexico  
Energy, Minerals and Natural Resources Department

Form C-101  
Revised March 17, 1999  
Instructions on back  
Submit to appropriate District Office  
State Lease - 6 Copies  
Fee Lease - 5 Copies

DISTRICT II  
811 South First, Artesia, NM 88210

OIL CONSERVATION DIVISION

PO BOX 2088  
Santa Fe, NM 87504-2088

DISTRICT III  
1000 Rio Brazos Rd., Aztec, NM 87410

DISTRICT IV  
2040 South Pacheco, Santa Re, NM 87501

☐ AMENDED REPORT

APPLICATION FOR PERMIT TO DRILL, RE-ENTER, DEEPEN, PLUGBACK, OR ADD A ZONE

|   |   |  |
|---|---|--|
| <sup>1</sup> Operator Name and Address<br>Yates Petroleum Corporation<br>105 South Fourth Street<br>Artesia, New Mexico 88210 |   | <sup>2</sup> OGRID Number<br>025575      |
|   |   | <sup>3</sup> API Number<br>30- 025-22509 |
| <sup>4</sup> Property Code<br>33347   | <sup>5</sup> Property Name<br>Tubb State Unit | <sup>6</sup> Well No.<br>1               |

<sup>7</sup> Surface Location

| UL or lot no. | Section | Township | Range | Lot Idn | Feet from the | North/South Line | Feet from the | East/West Line | County |
|---------------|---------|----------|-------|---------|---------------|------------------|---------------|----------------|--------|
| G             | 16      | 10S      | 34E   |         | 1780'         | North            | 1980          | East           | Lea    |

<sup>8</sup> Proposed Bottom Hole Location If Different From Surface

| UL or lot no.                           | Section | Township | Range | Lot Idn | Feet from the                 | North/South Line | Feet from the | East/West Line | County |
|---|---------|----------|-------|---------|-------------------------------|------------------|---------------|----------------|--------|
| <sup>9</sup> Proposed Pool 1<br>Wildcat |         |          |       |         | <sup>10</sup> Proposed Pool 2 |                  |               |                |        |

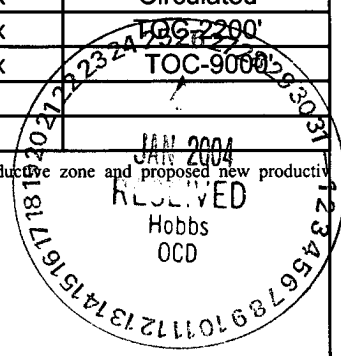
|                                   |   |  |  |   |
|-----------------------------------|---|--|--|---|
| <sup>11</sup> Work Type Code<br>E | <sup>12</sup> Well Type Code<br>G       | <sup>13</sup> Cable/Rotary<br>R        | <sup>14</sup> Lease Type Code<br>S         | <sup>15</sup> Ground Level Elevation<br>4218' |
| <sup>16</sup> Multiple<br>No      | <sup>17</sup> Proposed Depth<br>12,500' | <sup>18</sup> Formation<br>Autin Cycle | <sup>19</sup> Contractor<br>Not Determined | <sup>20</sup> Spud Date<br>ASAP               |

<sup>21</sup> Proposed Casing and Cement Program

| Hole Size | Casing Size | Casing weight/feet | Setting Depth  | Sacks of Cement | Estimated TOC |
|-----------|-------------|--------------------|----------------|-----------------|---------------|
| 15"       | 11 3/4"     | 42#                | 375'-in place  | 350 sx          | Circulated    |
| 11"       | 8 5/8"      | 24#                | 4094'-in place | 500 sx          | TOC-2290'     |
| 7 7/8"    | 5 1/2"      | 17# & P110         | 12,950'        | 850 sx          | TOC-9000'     |
|           |             |                    |                |                 |               |
|           |             |                    |                |                 |               |

<sup>22</sup> Describe the proposed program. If this application is to DEEPEN or PLUG BACK give the data on the present productive zone and proposed new productivity. Describe the blowout prevention program, if any. Use additional sheets if necessary.

Permit Expires 1 Year From Approval  
Data Unless Drilling Underway  
Re-Entry  
See Attached Sheet



|  |                       |  |  |
|--|-----------------------|--|--|
| <sup>23</sup> I hereby certify that the information given above is true and complete to the best of my knowledge and belief.<br>Signature: <i>Clifton R. May</i> |                       | OIL CONSERVATION DIVISION  |  |
| Printed name: Clifton R. May   |                       | Approved by: <i>[Signature]</i><br>PETROLEUM ENGINEER              |  |
| Title: Regulatory Agent  |                       | Approval Date: _____ Expiration Date: _____                        |  |
| Date: 01/23/04   | Phone: (505) 748-4347 | Conditional approval Attached <input type="checkbox"/> JAN 27 2004 |  |

**DISTRICT I**

1628 E. French Dr., Hobbs, NM 88240

**DISTRICT II**

811 South First, Artesia, NM 88210

**DISTRICT III**

1600 Rio Brazos Rd., Aztec, NM 87410

**DISTRICT IV**

2040 South Pacheco, Santa Fe, NM 87506

**State of New Mexico**

Energy, Minerals and Natural Resources Department

Form C-102

Revised March 17, 1989

Instruction on back

Submit to Appropriate District Office

State Lease - 4 Copies

Fee Lease - 3 Copies

**OIL CONSERVATION DIVISION**

P.O. Box 2088

Santa Fe, New Mexico 87504-2088

☐ AMENDED REPORT**WELL LOCATION AND ACREAGE DEDICATION PLAT**

|                                      |   |  |
|--------------------------------------|---|--|
| <b>API Number</b><br>30-025-22509    | <b>Pool Code</b><br>✓                               | <b>Pool Name</b><br>Wildcat <i>Acustin</i> |
| <b>Property Code</b><br><i>33347</i> | <b>Property Name</b><br>Tubb State Unit             | <b>Well Number</b><br>1                    |
| <b>OGRID No.</b><br>0225575          | <b>Operator Name</b><br>Yates Petroleum Corporation | <b>Elevation</b><br>4206'                  |

**Surface Location**

| UL or lot No. | Section | Township | Range | Lot Idn | Feet from the | North/South line | Feet from the | East/West line | County |
|---------------|---------|----------|-------|---------|---------------|------------------|---------------|----------------|--------|
| G             | 16      | 10S      | 34E   |         | 1780          | North            | 1980          | East           | Lea    |

**Bottom Hole Location If Different From Surface**

| UL or lot No.                     | Section                | Township                  | Range            | Lot Idn | Feet from the | North/South line | Feet from the | East/West line | County |
|-----------------------------------|------------------------|---------------------------|------------------|---------|---------------|------------------|---------------|----------------|--------|
|                                   |                        |                           |                  |         |               |                  |               |                |        |
| <b>Dedicated Acres</b><br>320 E/2 | <b>Joint or Infill</b> | <b>Consolidation Code</b> | <b>Order No.</b> |         |               |                  |               |                |        |

**NO ALLOWABLE WILL BE ASSIGNED TO THIS COMPLETION UNTIL ALL INTERESTS HAVE BEEN CONSOLIDATED  
OR A NON-STANDARD UNIT HAS BEEN APPROVED BY THE DIVISION**

|  |  |  |
|--|--|--|
| <div style="text-align: center;">1780'</div> <div style="text-align: center;">1980'</div> <div style="text-align: center;">VO-5487</div> | <b>OPERATOR CERTIFICATION</b><br>I hereby certify that the information contained herein is true and complete to the best of my knowledge and belief.<br><div style="text-align: right;"><i>Clifton R. May</i></div> <b>Signature</b><br>Clifton R. May<br><b>Printed Name</b><br>Regulatory Agent<br><b>Title</b><br>1/23/04<br><b>Date</b>              |  |
|  | <b>SURVEYOR CERTIFICATION</b><br>I hereby certify that the well location shown on this plat was plotted from field notes of actual surveys made by me or under my supervision, and that the same is true and correct to the best of my belief.<br>Refer to original plat<br><b>Date Surveyed</b><br><b>Signature &amp; Seal of Professional Surveyor</b> |  |
|  | <b>Certificate No.</b>   |  |
|  |  |  |

Humble Les. No. 600344

NEW MEXICO OIL CONSERVATION COMMISSION

State Les. No. OG 4630

WELL LOCATION AND ACREAGE DEDICATION PL

Form C-102  
Supersedes C-128  
Effective 1-1-65

Federal Les. No. \_\_\_\_\_

All distances must be from the outer boundaries of the Section.

|  |               |                                      |                              |                  |                                |
|--|---------------|--------------------------------------|------------------------------|------------------|--------------------------------|
| Operator<br>Humble Oil & Refining Co.  |               |                                      | Lease<br>New Mexico CG State |                  | Well No.<br>1                  |
| Unit Letter<br>G   | Section<br>16 | Township<br>10 South                 | Range<br>34 East             | County<br>Lea    |                                |
| Actual Footage Location of Well:<br>1780 feet from the North line and 1980 feet from the East line |               |                                      |                              |                  |                                |
| Ground Level Elev.<br>Later 4.6  |               | Producing Formation<br>Bough C Penn. |                              | Pool<br>Simanola | Dedicated Acreage:<br>80 Acres |

1. Outline the acreage dedicated to the subject well by colored pencil or hachure marks on the plat below.
2. If more than one lease is dedicated to the well, outline each and identify the ownership thereof (both as to working interest and royalty).
3. If more than one lease of different ownership is dedicated to the well, have the interests of all owners been consolidated by communitization, unitization, force-pooling, etc?

☐ Yes ☐ No If answer is "yes," type of consolidation \_\_\_\_\_

If answer is "no," list the owners and tract descriptions which have actually been consolidated. (Use reverse side of this form if necessary.) \_\_\_\_\_

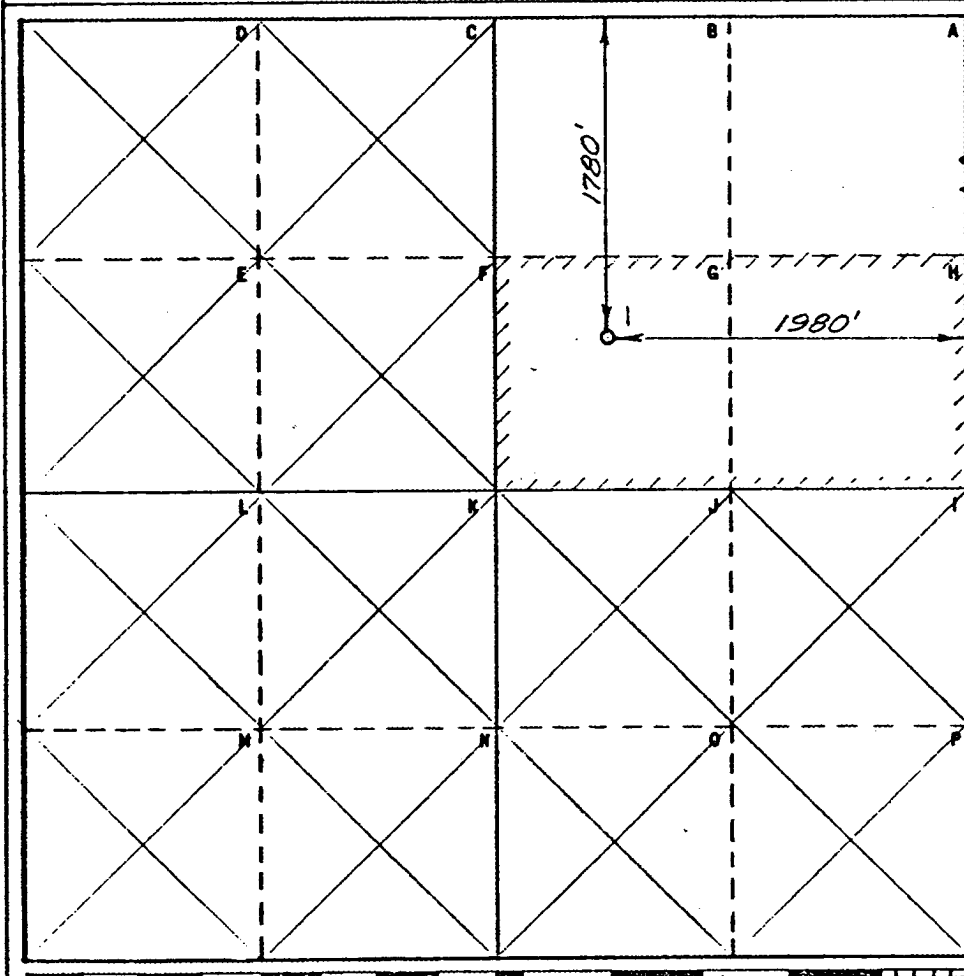
No allowable will be assigned to the well until all interests have been consolidated (by communitization, unitization, forced-pooling, or otherwise) or until a non-standard unit, eliminating such interests, has been approved by the Commission.

## CERTIFICATION

I hereby certify that the information contained herein is true and complete to the best of my knowledge and belief.

Name  
*G. Pinkerton*Position  
*Pro. Supvr.*Company Humble Oil & Refining Co.  
Box 1600 Midland, TexasDate  
*April 2, 1968*

I hereby certify that the well location shown on this plat was plotted from field notes of actual surveys made by me or under my supervision, and that the same is true and correct to the best of my knowledge and belief.

Date Surveyed  
April 1, 1968Registered Professional Engineer  
and/or Land Surveyor*H. S. [Signature]*Certificate No.  
1382

0 330 660 990 1320 1650 1980 2310 2640 2970 3300 3630 3960 4290 4620 4950 5280 5610 5940 6270 6600

16 miles N.E. of Tatum

New Mexico

C.F. Sec. File No.

W-A 6333

# **YATES PETROLEUM CORPORATION**

**Tubb State Unit #1 Re-entry**

**1780' FNL & 1980' FEL**

**Section 16-T10S-R34E**

**Lea County, New Mexico**

**Lease VO-5487**

**Drilling Plans: Yates Petroleum Corporation plans to re-enter this well bore that was originally drilled by Humble Oil & Refining Co. as their New Mexico CG State #1, which was plugged in 1968. Yates will use a pulling unit and a reverse unit to drill out the cement plugs using a 7 7/8" bit in the 8 5/8" casing. The casing will then be tested and a drilling rig will be moved in and the plugs in the 7 7/8" open hole will be drilled out to the original TD of 10,051'. Then the well bore will be drilled deeper to a new TD of 12,500'. After reaching the new TD, a new suite of open hole logs will be ran. Yates will run 5 1/2" production casing to TD and will be cemented with approximately 850 sacks of cement to bring the cement top up to 9,000'+/-. The mud program to be used will be 9.2-9.5 brine with viscosity of 55-70 cp. A 5000# BOPE will be installed on the 8 5/8" casing.**

**The well will be completed using a pulling unit in the Austin Cycle, Morrow, or Atoka.**

Well Name: New Mexico CG State #1 Field: \_\_\_\_\_

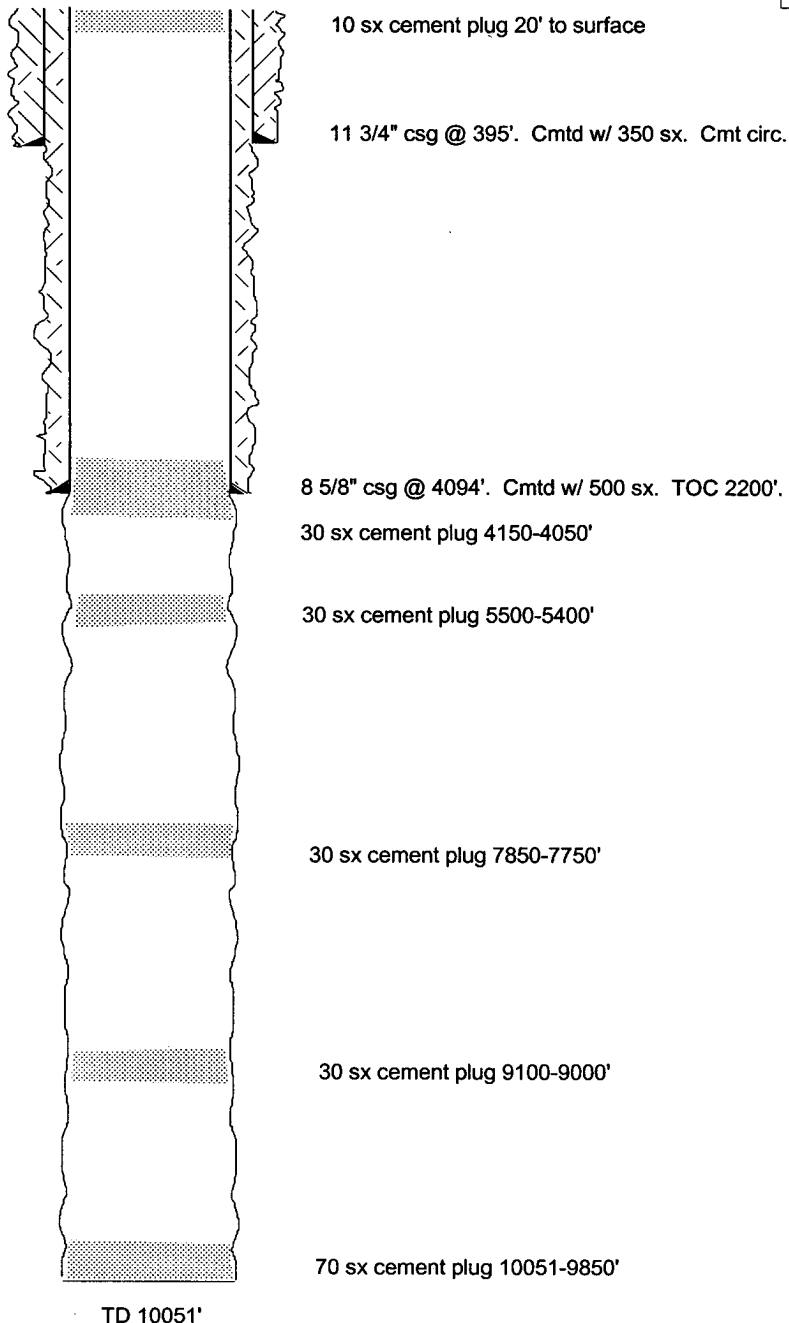
Location: 1780' FNL & 1980' FEL Sec. 16-10S-34E Lea Co, NM

GL: 4206' Zero: DF 4218' AGL: \_\_\_\_\_ KB: \_\_\_\_\_

Spud Date: 4/21/68 Completion Date: \_\_\_\_\_

Comments: Originally drilled by Humble. P&A'd 6/1/68

| Casing Program     |           |
|--------------------|-----------|
| Size/Wt/Grade/Conn | Depth Set |
| 11 3/4" 42# H40    | 395'      |
| 8 5/8" 24# J55     | 4094'     |
|                    |           |
|                    |           |
|                    |           |
|                    |           |



CURRENT CONFIGURATION

SKETCH NOT TO SCALE

DATE: 1/7/04

Well Name: New Mexico CG State #1 Field: \_\_\_\_\_

Location: 1780' FNL & 1980' FEL Sec. 16-10S-34E Lea Co, NM

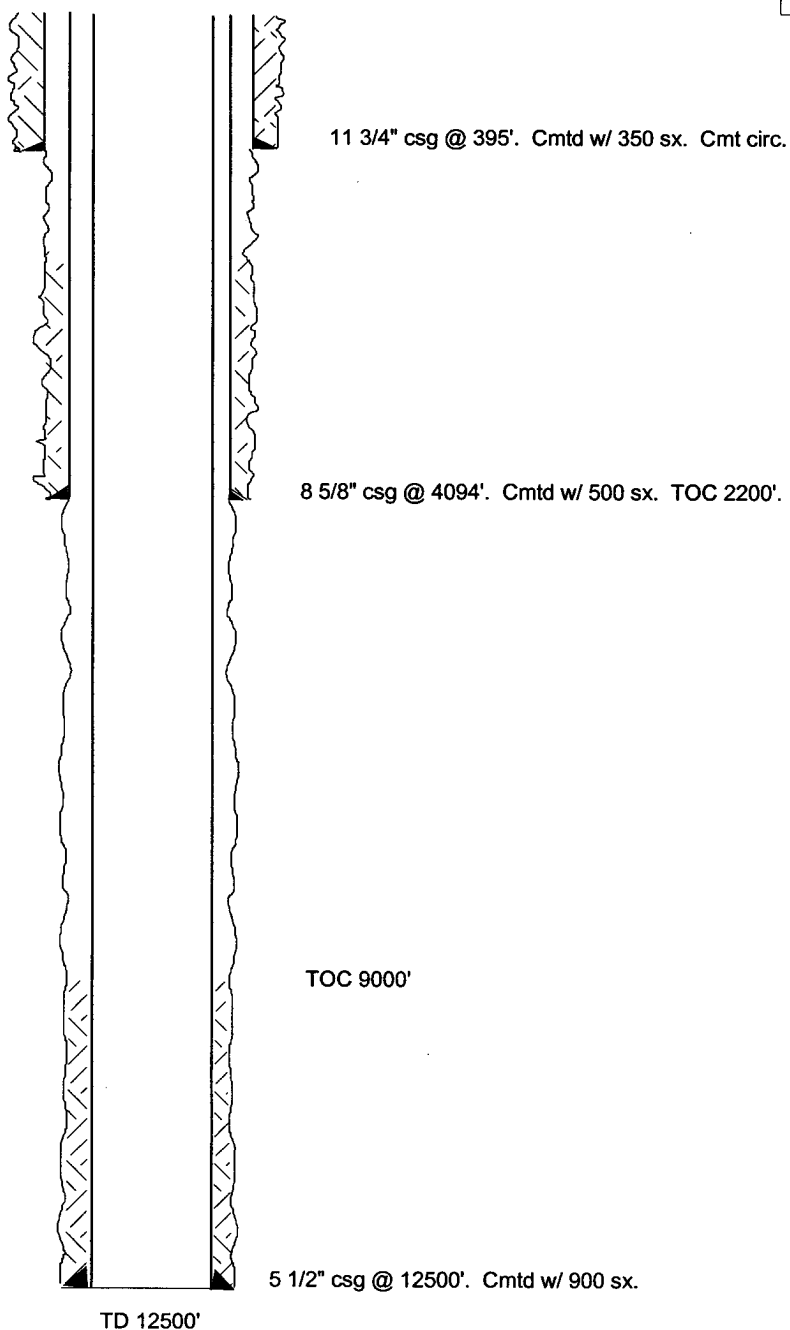
GL: 4206' Zero: DF 4218' AGL: \_\_\_\_\_ KB: \_\_\_\_\_

Spud Date: 4/21/68 Completion Date: \_\_\_\_\_

Comments: Originally drilled by Humble. P&A'd 6/1/68

| Casing Program     |           |
|--------------------|-----------|
| Size/Wt/Grade/Conn | Depth Set |
| 11 3/4" 42# H40    | 395'      |
| 8 5/8" 24# J55     | 4094'     |
| 5 1/2" 17# P110    | 12500'    |
|                    |           |
|                    |           |
|                    |           |

PROPOSED CONFIGURATION



SKETCH NOT TO SCALE

DATE: 1/15/04