

District I

1625 N. French Dr., Hobbs, NM 88240

District II

1301 W Grand Avenue, Artesia, NM 88210

District III

1000 Rio Brazos Road, Aztec, NM 87410

District IV

1220 S. St. Francis Dr., Santa Fe, NM 87505

State of New Mexico

Energy Minerals and Natural Resources

Form C-101

June 16, 2008

RECEIVED

FEB 09 2010

HOBBSUOD

Oil Conservation Division

1220 South St. Francis Dr.

Santa Fe, NM 87505

Submit to appropriate District Office

☐ AMENDED REPORT

APPLICATION FOR PERMIT TO DRILL, RE-ENTER, DEEPEN, PLUGBACK, OR ADD A ZONE

¹ Operator Name and Address Yates Petroleum Corporation 105 South Fourth Street Artesia, NM 88210		² OGRID Number 025575
		³ API Number 30 - 025-35180
⁴ Property Code 26674	⁵ Property Name Red Tail AWR State Com	⁶ Well No 1
⁹ Proposed Pool 1 Wildcat Strawn (Gas)		¹⁰ Proposed Pool 2 Anderson Ranch; Cis-Can, North (Oil)

⁷ Surface Location

UL or lot no	Section	Township	Range	Lot Idn	Feet from the	North/South line	Feet from the	East/West line	County
D	28	15S	32E		1200	North	990	West	Lea

⁸ Proposed Bottom Hole Location If Different From Surface

UL or lot no	Section	Township	Range	Lot Idn	Feet from the	North/South line	Feet from the	East/West line	County

Additional Well Information

¹¹ Work Type Code P	¹² Well Type Code G	¹³ Cable/Rotary NA	¹⁴ Lease Type Code S	¹⁵ Ground Level Elevation 4312' GL
¹⁶ Multiple N	¹⁷ Proposed Depth NA	¹⁸ Formation Mississippian	¹⁹ Contractor NA	²⁰ Spud Date ASAP

²¹ Proposed Casing and Cement Program

Hole Size	Casing Size	Casing weight/foot	Setting Depth	Sacks of Cement	Estimated TOC

²² Describe the proposed program. If this application is to DEEPEN or PLUG BACK, give the data on the present productive zone and proposed new productive zone. Describe the blowout prevention program, if any. Use additional sheets if necessary.

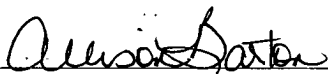
Yates Petroleum Corporation proposes to plug back and recomplete this well as follows:

MIRU. Rig up safety trailer. Kill well. Release pkr. TOH w/tbg & pkr. Set CIBP @ 12,300' w/35' cement. Perforate Strawn 11348-11354' (36) & 11359-11365' (36). Stimulate as needed. If Strawn is not commercially productive set CIBP @ 11,300' w/35' cement. Perforate Cisco 9837-9842' (20), 9932-9939' (28), 9950-9958' (32) & 9985-9989' (16). Stimulate as needed.

**Permit Expires 2 Years From Approval
Date Unless Drilling Underway
Plugback**

²³ I hereby certify that the information given above is true and complete to the best of my knowledge and belief

Signature.



Printed name Allison Barton

Title. Regulatory Compliance Technician

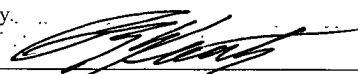
E-mail Address: abarton@yatespetroleum.com

Date 2/5/10

Phone (575) 748-1471

OIL CONSERVATION DIVISION

Approved by.



Title PETROLEUM ENGINEER

Approval Date: FEB 22 2010

-Expiration Date.

CONDITIONS OF APPROVAL for Non-Standard Location
Intent to drill ONLY --- CANNOT produce until the Non-Standard
Location has been approved by OCD Santa Fe office

Need NSL for Anderson Ranch
Cis-Can North

District I
1625 N. French Dr., Hobbs, NM 88240

District II
1301 W. Grand Avenue, Artesia, NM 88210

District III
1000 Rio Brazos Rd., Aztec, NM 87410

District IV
1220 S. St. Francis Dr., Santa Fe, NM 87505

RECEIVED

FEB 09 2010

HOBBSUCD

State of New Mexico

Energy, Minerals & Natural Resources Department

OIL CONSERVATION DIVISION

1220 South St. Francis Dr.

Santa Fe, NM 87505

Form C-102

Revised October 15, 2009

Submit one copy to appropriate

District Office

☐ AMENDED REPORT

WELL LOCATION AND ACREAGE DEDICATION PLAT

¹ API Number 30-025-35180	² Pool Code /	³ Pool Name Wildcat Strawn (Gas)
⁴ Property Code 26674	⁵ Property Name Red Tail AWR State Com	⁶ Well Number 1
⁷ OGRID No. 025575	⁸ Operator Name Yates Petroleum Corporation	⁹ Elevation 4312' GL

¹⁰ Surface Location

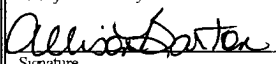
UL or lot no. D	Section 28	Township 15S	Range 32E	Lot Idn	Feet from the 1200	North/South line North	Feet from the 990	East/West line West	County Lea
--------------------	---------------	-----------------	--------------	---------	-----------------------	---------------------------	----------------------	------------------------	---------------

¹¹ Bottom Hole Location If Different From Surface

UL or lot no.	Section	Township	Range	Lot Idn	Feet from the	North/South line	Feet from the	East/West line	County
---------------	---------	----------	-------	---------	---------------	------------------	---------------	----------------	--------

¹² Dedicated Acres 320	¹³ Joint or Infill	¹⁴ Consolidation Code	¹⁵ Order No.
--------------------------------------	-------------------------------	----------------------------------	-------------------------

No allowable will be assigned to this completion until all interests have been consolidated or a non-standard unit has been approved by the division.

¹⁶ 990' · 1200'				¹⁷ OPERATOR CERTIFICATION <i>I hereby certify that the information contained herein is true and complete to the best of my knowledge and belief, and that this organization either owns a working interest or unleased mineral interest in the land including the proposed bottom hole location or has a right to drill this well at this location pursuant to a contract with an owner of such a mineral or working interest, or to a voluntary pooling agreement or a compulsory pooling order heretofore entered by the division</i>  2/5/10 Signature Date Allison Barton Printed Name
				¹⁸ SURVEYOR CERTIFICATION <i>I hereby certify that the well location shown on this plat was plotted from field notes of actual surveys made by me or under my supervision, and that the same is true and correct to the best of my belief</i> Date of Survey Signature and Seal of Professional Surveyor Certificate Number

District I
1625 N. French Dr., Hobbs, NM 88240

District II
1301 W. Grand Avenue, Artesia, NM 88210

District III
1000 Rio Brazos Rd., Aztec, NM 87410

District IV
1220 S. St. Francis Dr., Santa Fe, NM 87505

RECEIVED

FEB 09 2010
HOBBS

State of New Mexico
Energy, Minerals & Natural Resources Department

OIL CONSERVATION DIVISION

1220 South St. Francis Dr.
Santa Fe, NM 87505

Form C-

Revised October 15, 2009

Submit one copy to appropriate

District Of

☐ AMENDED REPORT

WELL LOCATION AND ACREAGE DEDICATION PLAT

¹ API Number 30-025-35180	² Pool Code 1360 ✓	³ Pool Name Anderson Ranch; Cis-Can, North (Oil)
⁴ Property Code 26674	⁵ Property Name Red Tail AWR State Com	⁶ Well Number 1
⁷ OGRID No. 025575	⁸ Operator Name Yates Petroleum Corporation	⁹ Elevation 4312' GL

¹⁰ Surface Location

UL or lot no.	Section	Township	Range	Lot Idn	Feet from the	North/South line	Feet from the	East/West line	County
D	28	15S	32E		1200	North	990	West	Lea

¹¹ Bottom Hole Location If Different From Surface

UL or lot no.	Section	Township	Range	Lot Idn	Feet from the	North/South line	Feet from the	East/West line	County
¹² Dedicated Acres 40 ✓	¹³ Joint or Infill	¹⁴ Consolidation Code	¹⁵ Order No.						

No allowable will be assigned to this completion until all interests have been consolidated or a non-standard unit has been approved by the division

¹⁶ 1200' 990'					¹⁷ OPERATOR CERTIFICATION <i>I hereby certify that the information contained herein is true and complete to the best of my knowledge and belief, and that this organization either owns a working interest or unleased mineral interest in the land including the proposed bottom hole location or has a right to drill this well at this location pursuant to a contract with an owner of such a mineral or working interest, or to a voluntary pooling agreement or a compulsory pooling order heretofore entered by the division</i> Allison Barton 2/5/10 Signature Date Allison Barton Printed Name
					¹⁸ SURVEYOR CERTIFICATION <i>I hereby certify that the well location shown on this plat was plotted from field notes of actual surveys made by me or under my supervision, and that the same is true and correct to the best of my belief</i> Date of Survey Signature and Seal of Professional Surveyor Certificate Number

Well Name: Red Tail "AWR" State Com #1 Field: _____

Location: 1200' FNL & 990' FWL Sec. 28-15S-32E, Lea Co., NM

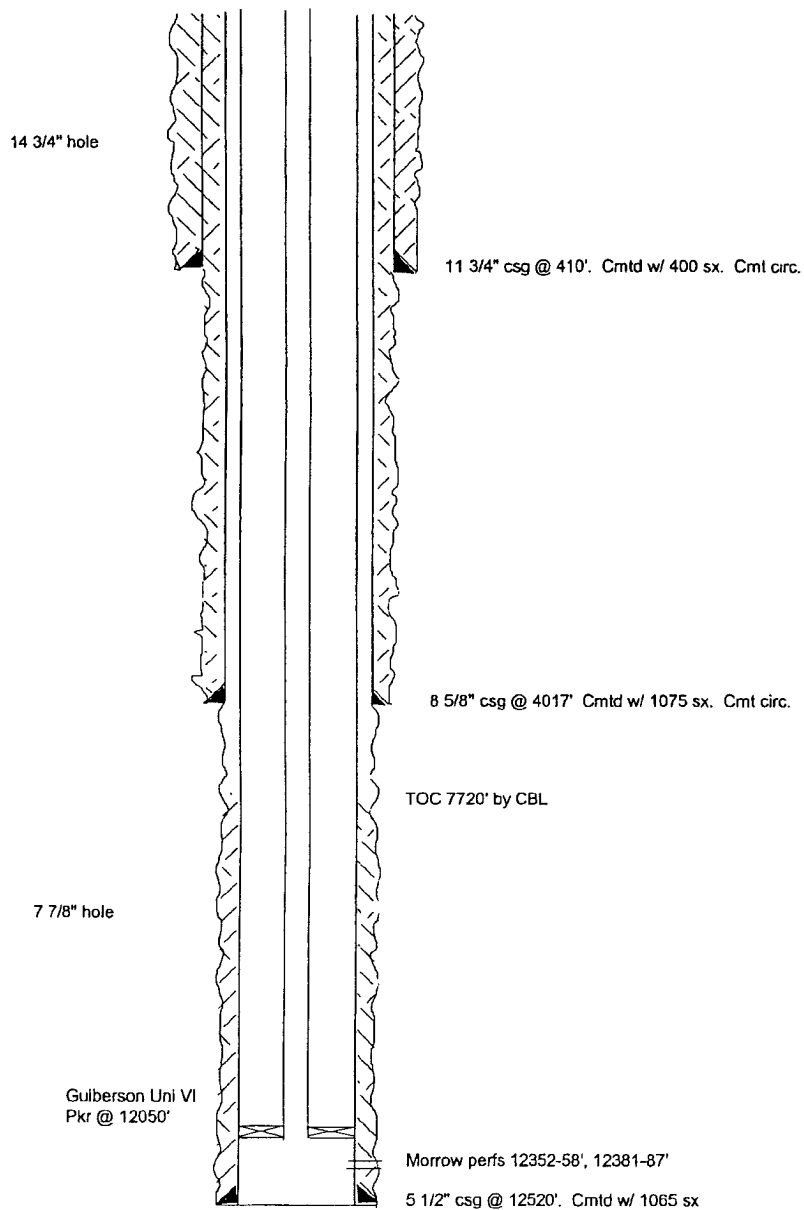
GL: 4312' Zero: _____ AGL: _____ KB: 4331'

Spud Date: 11-21-00 Completion Date: _____

Comments: _____

Casing Program	
Size/Wt/Grade/Conn	Depth Set
11 3/4" 42# H40	410'
8 5/8" 32# J55 ST&C	4017'
5 1/2" 17#&20# J55, L&N80, P110	12520'

Current Configuration



SKETCH NOT TO SCALE

DATE: 12/18/09 RDTAIL1

Well Name: Red Tail "AWR" State Com #1 Field: _____

Location: 1200' FNL & 990' FWL Sec. 28-15S-32E, Lea Co., NM

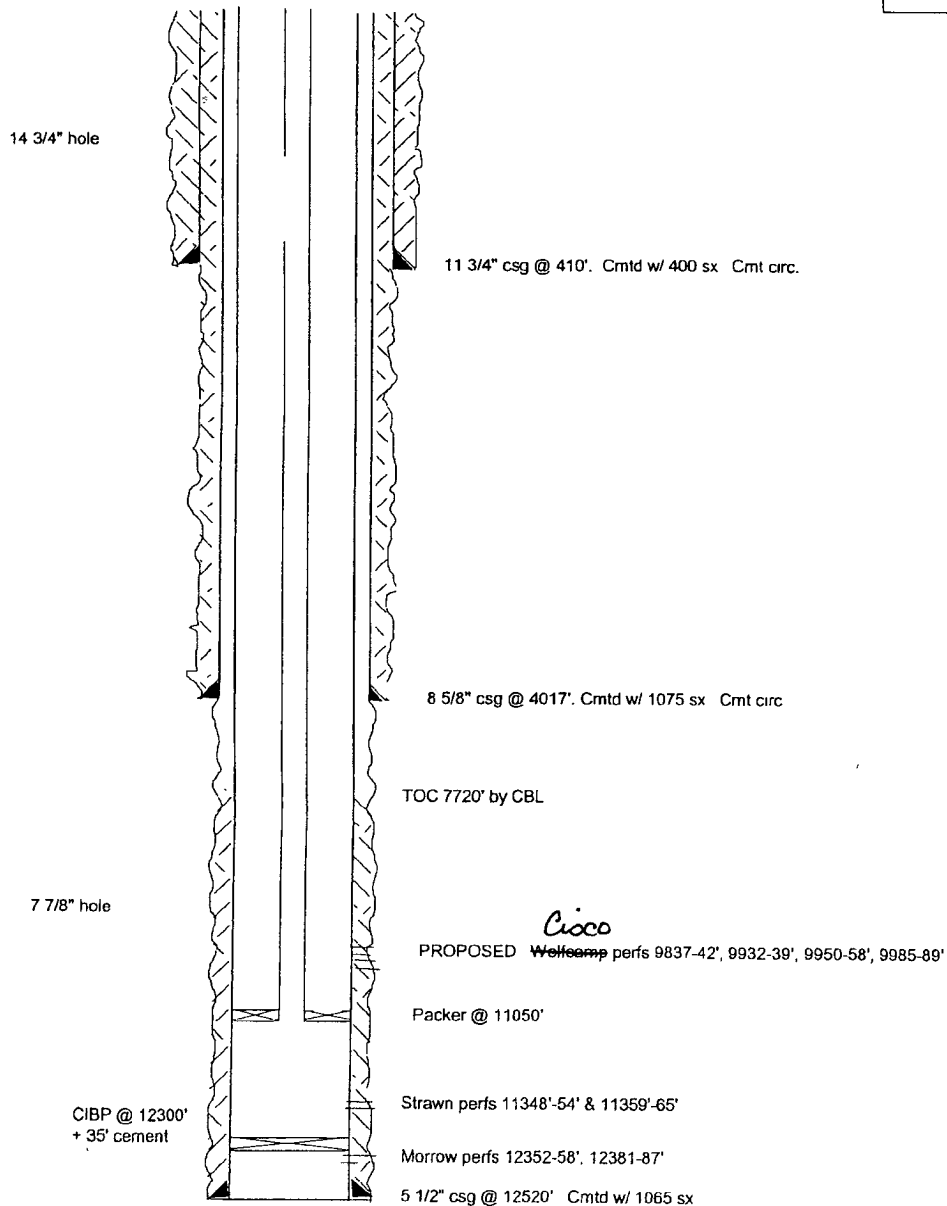
GL: 4312' Zero: _____ AGL: _____ KB: 4331'

Spud Date: 11-21-00 Completion Date: _____

Comments: _____

Casing Program	
Size/Wt/Grade/Conn	Depth Set
11 3/4" 42# H40	410'
8 5/8" 32# J55 ST&C	4017'
5 1/2" 17#&20# J55, L&N80, P110	12520'

Proposed Configuration

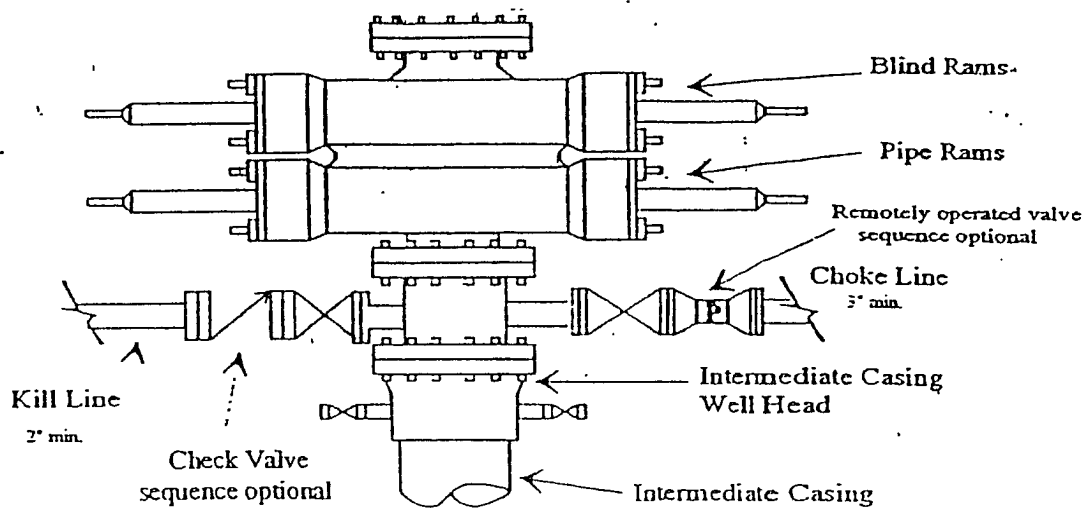


SKETCH NOT TO SCALE

DATE: 12/18/09 RDTAIL1A

Yates Petroleum Corporation

Typical 3,000 psi Pressure System Schematic



Typical 3,000 psi choke manifold assembly with at least these minimum features

