

District I
1625 N French Dr., Hobbs, NM 88240

District II
1301 W. Grand Avenue, Artesia, NM 88210

District III
1000 Rio Brazos Road, Aztec, NM 87410

District IV
1220 S. St. Francis Dr., Santa Fe, NM 87505

State of New Mexico

Energy Minerals and Natural Resources

Form C-101

June 16, 2008

RECEIVED

DEC 14 2009

HOBBSOCD

Oil Conservation Division

1220 South St. Francis Dr.

Santa Fe, NM 87505

Submit to appropriate District Office

☐ AMENDED REPORT

**APPLICATION FOR PERMIT TO DRILL, RE-ENTER, DEEPEN,
PLUGBACK, OR ADD A ZONE**

¹ Operator Name and Address Range Operating New Mexico, Inc. 100 Throckmorton St., Ste. 1200 Fort Worth, TX 76102		² OGRID Number 227588 ✓
		³ API Number 30 - 025-39062 ✓

³ Property Code 301559 ✓	⁵ Property Name HILL ✓	⁶ Well No 002 ✓
--	--------------------------------------	-------------------------------

⁹ Proposed Pool 1 Drinkard (19190) / Tubb Oil & Gas (60240)	¹⁰ Proposed Pool 2 Blinebry Oil & Gas (6660)
---	--

⁷ Surface Location

UL or lot no B	Section 4	Township 21S	Range 37E	Lot Idn	Feet from the 2970	North/South line N	Feet from the 2310	East/West line E	County Lea ✓
-------------------	--------------	-----------------	--------------	---------	-----------------------	-----------------------	-----------------------	---------------------	-----------------

⁸ Proposed Bottom Hole Location If Different From Surface

UL or lot no	Section	Township	Range	Lot Idn	Feet from the	North/South line	Feet from the	East/West line	County
--------------	---------	----------	-------	---------	---------------	------------------	---------------	----------------	--------

Additional Well Information

¹¹ Work Type Code E & A	¹² Well Type Code Oil	¹³ Cable/Rotary	¹⁴ Lease Type Code State	¹⁵ Ground Level Elevation 3445
¹⁶ Multiple	¹⁷ Proposed Depth	¹⁸ Formation	¹⁹ Contractor	²⁰ Spud Date

²¹ Proposed Casing and Cement Program

Hole Size	Casing Size	Casing weight/foot	Setting Depth	Sacks of Cement	Estimated TOC
No Change					

²² Describe the proposed program. If this application is to DEEPEN or PLUG BACK, give the data on the present productive zone and proposed new productive zone. Describe the blowout prevention program, if any. Use additional sheets if necessary.

Re-enter well to perf and frac the Blinebry Oil & Gas, the Tub Oil & Gas (Oil), additional perfs in the Drinkard and commingle with the current producing pools. Perforations will be:

Drinkard: 6551' - 6555' (3 spf); 6452' - 6458' (3 spf)

Tubb Oil & Gas (Oil); 6338' - 6344' (3 spf)

Blinebry Oil & Gas: 5824' - 5827' (3 spf); 5883' - 5887' (3 spf); 5700' - 5708' (3 spf)

**Permit Expires 2 Years From Approval
Date Unless Drilling Underway
Re Entry & Adding**

²³ I hereby certify that the information given above is true and complete to the best of my knowledge and belief.

Signature:

Printed name:
Paula Hale

Title:
Sr. Reg. Sp.

E-mail Address:
phale@rangeresources.com

Date:
12-11-2009

Phone:
817-869-4216

OIL CONSERVATION DIVISION

Approved by

Title:

PETROLEUM ENGINEER

Approval Date:

FEB 24 2010

Expiration Date

Conditions of Approval: Approval to drill & test all new zones separate, but cannot produce Downhole commingle until DHC is approved in Hobbs District office according to R-11363

RECEIVED

DEC 14 2009

DISTRICT I

1625 N. FRENCH DR., HOBBS, NM 88240

HOBBSOCD

State of New Mexico
Energy, Minerals and Natural Resources Department

Form C-102

Revised October 12, 2005

Submit to Appropriate District Office

State Lease - 4 Copies

Fee Lease - 3 Copies

DISTRICT II

1301 W. GRAND AVENUE, ARTESIA, NM 88210

OIL CONSERVATION DIVISION

1220 SOUTH ST. FRANCIS DR.

Santa Fe, New Mexico 87505

DISTRICT III

1000 Rio Brazos Rd., Aztec, NM 87410

DISTRICT IV

1220 S. ST. FRANCIS DR., SANTA FE, NM 87505

WELL LOCATION AND ACREAGE DEDICATION PLAT

☐ AMENDED REPORT

API Number 30-025-39062	Pool Code 19190	Pool Name Drinkard
Property Code 301559	Property Name HILL	Well Number 2
OGRID No. 227588	Operator Name RANGE OPERATING NEW MEXICO, INC.	Elevation 3446'

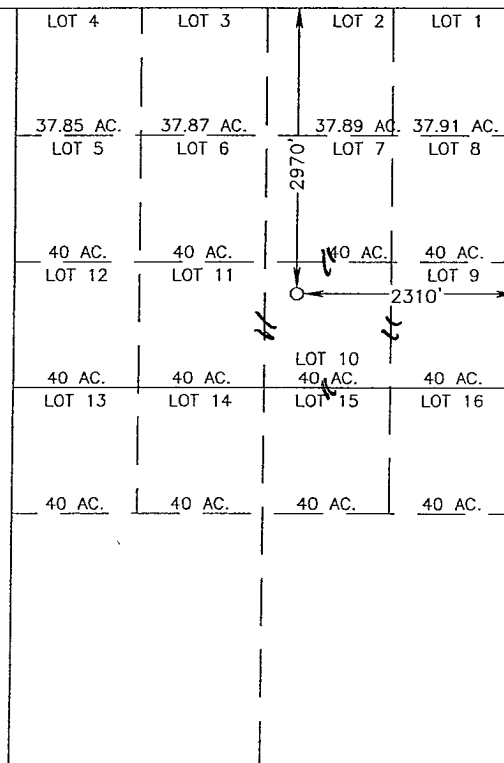
Surface Location

UL or lot No. 10	Section 4	Township 21-S	Range 37-E	Lot Idn	Feet from the 2970	North/South line NORTH	Feet from the 2310	East/West line EAST	County LEA
---------------------	--------------	------------------	---------------	---------	-----------------------	---------------------------	-----------------------	------------------------	---------------

Bottom Hole Location If Different From Surface

UL or lot No.	Section	Township	Range	Lot Idn	Feet from the	North/South line	Feet from the	East/West line	County
Dedicated Acres 40	Joint or Infill	Consolidation Code	Order No.						

NO ALLOWABLE WILL BE ASSIGNED TO THIS COMPLETION UNTIL ALL INTERESTS HAVE BEEN CONSOLIDATED
OR A NON-STANDARD UNIT HAS BEEN APPROVED BY THE DIVISION



SCALE: 1"=2000'

GEODETIC COORDINATES

NAD 27 NME

Y=552664.2 N

X=859695.3 E

LAT.=32.513971° N

LONG.=103.166485° W

OPERATOR CERTIFICATION

I hereby certify that the information herein is true and complete to the best of my knowledge and belief, and that this organization either owns a working interest or unleased mineral interest in the land including the proposed bottom hole location or has a right to drill this well at this location pursuant to a contract with an owner of such mineral or working interest, or to a voluntary pooling agreement or a compulsory pooling order heretofore entered by the division.

Signature

Date

Paula Hale

Printed Name

SURVEYOR CERTIFICATION

I hereby certify that the well location shown on this plat was plotted from field notes of actual surveys made by me or under my supervision, and that the same is true and correct to the best of my belief.

Date Surveyed

Signature & Seal of
Professional Surveyor

Certificate No. GARY EIDSON

12641

RONALD J. EIDSON 3239

RECEIVED

DISTRICT I
1625 N. FRENCH DR., HOBBS, NM 88240

DEC 14 2009

HOBBSOCD

DISTRICT II
1301 W. GRAND AVENUE, ARTESIA, NM 88210

DISTRICT III
1000 Rio Brazos Rd., Aztec, NM 87410

DISTRICT IV
1220 S. ST. FRANCIS DR., SANTA FE, NM 87505

State of New Mexico
Energy, Minerals and Natural Resources Department

OIL CONSERVATION DIVISION 1220 SOUTH ST. FRANCIS DR. Santa Fe, New Mexico 87505

Form C-102
Revised October 12, 2005
Submit to Appropriate District Office
State Lease - 4 Copies
Fee Lease - 3 Copies

WELL LOCATION AND ACREAGE DEDICATION PLAT

☐ AMENDED REPORT

API Number 30-025-39062	Pool Code 60240	Pool Name Tubb Oil & Gas
Property Code 301559	Property Name HILL	Well Number 2
OGRID No. 227588	Operator Name RANGE OPERATING NEW MEXICO, INC.	Elevation 3446'

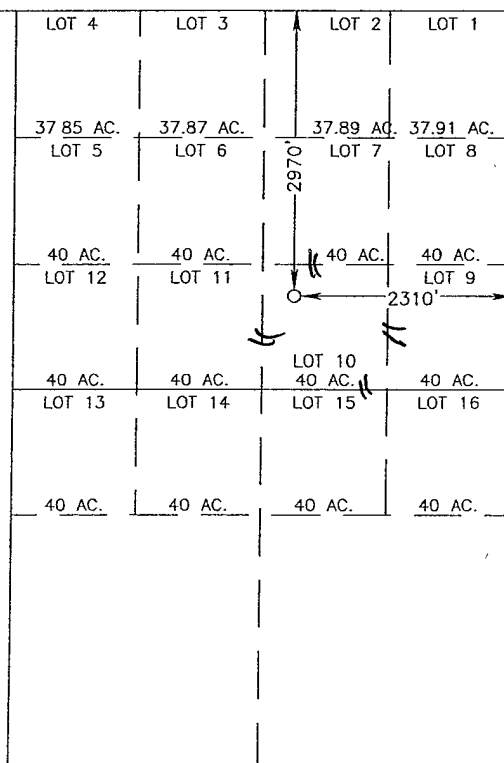
Surface Location

UL or lot No.	Section	Township	Range	Lot Idn	Feet from the	North/South line	Feet from the	East/West line	County
10	4	21-S	37-E		2970	NORTH	2310	EAST	LEA

Bottom Hole Location If Different From Surface

UL or lot No.	Section	Township	Range	Lot Idn	Feet from the	North/South line	Feet from the	East/West line	County
Dedicated Acres 40	Joint or Infill	Consolidation Code	Order No.						

NO ALLOWABLE WILL BE ASSIGNED TO THIS COMPLETION UNTIL ALL INTERESTS HAVE BEEN CONSOLIDATED
OR A NON-STANDARD UNIT HAS BEEN APPROVED BY THE DIVISION



SCALE: 1"=2000'

GEODETIC COORDINATES
NAD 27 NME
Y=552664.2 N
X=859695.3 E

LAT.=32.513971° N
LONG.=103.166485° W

OPERATOR CERTIFICATION

I hereby certify that the information herein is true and complete to the best of my knowledge and belief, and that this organization either owns a working interest or unleased mineral interest in the land including the proposed bottom hole location or has a right to drill this well at this location pursuant to a contract with an owner of such mineral or working interest, or to a voluntary pooling agreement or a compulsory pooling order heretofore entered by the division.

Signature: *Paula Hale* Date: 12/11/09
Printed Name: Paula Hale

SURVEYOR CERTIFICATION

I hereby certify that the well location shown on this plat was plotted from field notes of actual surveys made by me or under my supervision, and that the same is true and correct to the best of my belief.

Date Surveyed: 12/11/09
Signature & Seal of Professional Surveyor: *Gary E. Eidsen* 12641
Certificate No. GARY EIDSON 12641
RONALD J. EIDSON 3239

RECEIVED

DISTRICT I
1625 N. FRENCH DR., HOBBS, NM 88240

DISTRICT II
1301 W. GRAND AVENUE, ARTESIA, NM 88210

DISTRICT III
1000 Rio Brazos Rd., Aztec, NM 87410

DISTRICT IV
1220 S. ST. FRANCIS DR., SANTA FE, NM 87505

State of New Mexico
Energy, Minerals and Natural Resources Department

DEC 14 2009

HOBBS OIL

CONSERVATION DIVISION
1220 SOUTH ST. FRANCIS DR.
Santa Fe, New Mexico 87505

Form C-102

Revised October 12, 2005

Submit to Appropriate District Office

State Lease - 4 Copies

Fee Lease - 3 Copies

WELL LOCATION AND ACREAGE DEDICATION PLAT

☐ AMENDED REPORT

API Number 30-025-39062	Pool Code 6660	Pool Name Blinebry Oil & Gas
Property Code 301559	Property Name HILL	Well Number 2
OGRID No. 227588	Operator Name RANGE OPERATING NEW MEXICO, INC.	Elevation 3446'

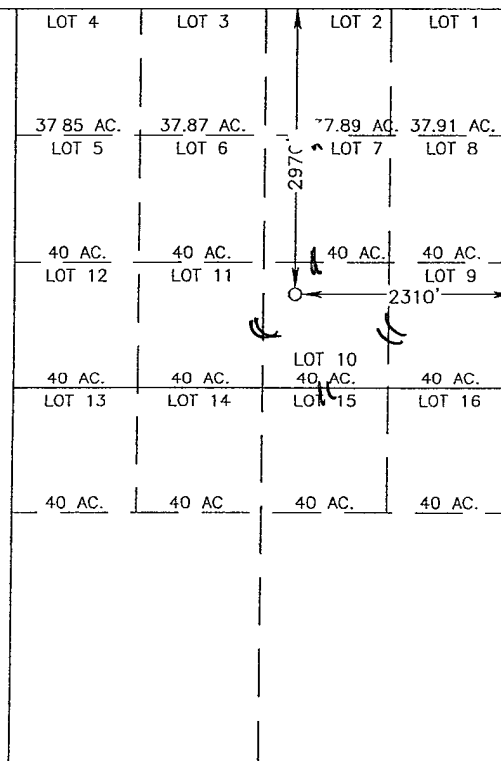
Surface Location

UL or lot No.	Section	Township	Range	Lot Idn	Feet from the	North/South line	Feet from the	East/West line	County
10	4	21-S	37-E		2970	NORTH	2310	EAST	LEA

Bottom Hole Location If Different From Surface

UL or lot No.	Section	Township	Range	Lot Idn	Feet from the	North/South line	Feet from the	East/West line	County
Dedicated Acres 40	Joint or Infill	Consolidation Code	Order No.						

NO ALLOWABLE WILL BE ASSIGNED TO THIS COMPLETION UNTIL ALL INTERESTS HAVE BEEN CONSOLIDATED
OR A NON-STANDARD UNIT HAS BEEN APPROVED BY THE DIVISION



SCALE: 1"=2000'

GEODETIC COORDINATES
NAD 27 NME
Y=552664.2 N
X=859695.3 E

LAT.=32.513971° N
LONG.=103.166485° W

OPERATOR CERTIFICATION

I hereby certify that the information herein is true and complete to the best of my knowledge and belief, and that this organization either owns a working interest or unleased mineral interest in the land including the proposed bottom hole location or has a right to drill this well at this location pursuant to a contract with an owner of such mineral or working interest, or to a voluntary pooling agreement or a compulsory pooling order heretofore entered by the division.

Signature: *Paula Hale* Date: 12/11/09

Printed Name: Paula Hale

SURVEYOR CERTIFICATION

I hereby certify that the well location shown on this plat was plotted from field notes of actual surveys made by me or under my supervision, and that the same is true and correct to the best of my belief.

Date Surveyed: 12/11/09
Signature & Seal of Professional Surveyor: *Gary Edson*
Professional Surveyor 12641

Certificate No. GARY EIDSON 12641
RONALD J. EIDSON 3239